

# WHEN IS SICK TOO SICK FOR SCHOOL?

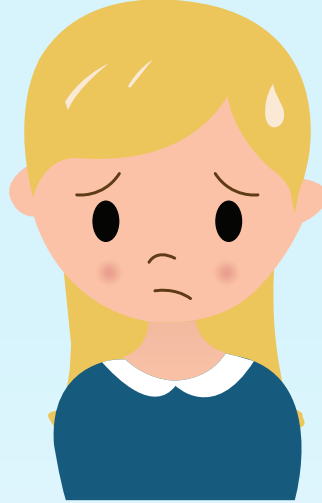


## Send me to school if...

I have a runny nose or just a little cough, but no other symptoms.

I haven't taken any fever reducing medicine for 24 hours, and I haven't had a fever during that time.

I haven't thrown up or had any diarrhea for 24 hours.



## Keep me at home if...

I have a temperature **greater than or equal to** 100.4 degrees.

I'm throwing up or have diarrhea.

My eyes are pink and crusty.



## Call the doctor if...

I have a temperature higher than 100 degrees for more than two days.

I've been throwing up or have diarrhea for more than two days.

I've had the sniffles for more than a week, and they aren't getting better.

I still have asthma symptoms after using my asthma medicine (and call 911 if I'm having trouble breathing after using an inhaler).



Adapted with permission from Baltimore City Public Schools.