

JULY, 2020 UPDATE - RETURN-TO-SCHOOL EDITION

### STAY CONNECTED AND INFORMED

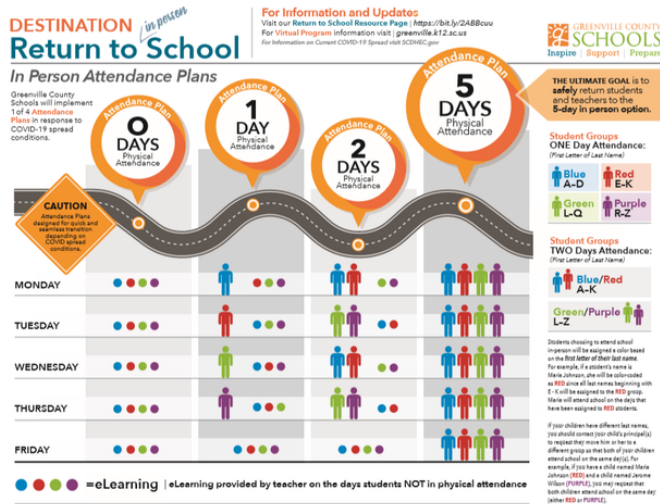
The goal of the GCS administration is to return to in-person school five days a week, as soon as it is safe to do so. Under guidelines produced by the AccelerateED task force, schools should correlate attendance plans to Community Spread levels. In general, as community spread increases, the number of students present in school each day should decrease, down to and including zero. DHEC issues a new community spread rating each Monday, and as a result, we will not know our attendance plan for the start of school until much closer to August 17.

### CLICK HERE: RETURN TO SCHOOL PARENT RESOURCE PAGE



Parents can find all the return-to-school information from GCS on the new Parent Resource Page.

### CLICK HERE: ROADMAP TO IN-PERSON SCHOOL



### SET UP PARENT BACKPACK

Parent Backpack is an amazing online application that replaces the PowerSchool Parent Portal. With Parent Backpack, you are able to view your child's grades, school attendance, and any discipline incidents. Parent Backpack works on any device and is mobile friendly.

Access Parent Backpack and create an account at <https://parents.gcsbackpack.com>.

[English Directions](#)  
[Direcciones en español](#)



### FREE AND REDUCED LUNCH APPLICATIONS

Online applications are now available for 2020-2021 and can be accessed at <http://greenville.school lunchapp.com>. It is the quickest and most accurate way to apply. If you have questions, contact Bonnie Hogue, Free and Reduced Project Manager ([bhogue@greenville.k12.sc.us](mailto:bhogue@greenville.k12.sc.us) or 355-1251).

## GREENVILLE COUNTY SCHOOLS Virtual Program APPLICATION (due July 27)

### Greenville County Schools

### GCS VIRTUAL PROGRAM APPLICATION (DUE JULY 27)

In response to the needs of our community, GCS has added a new full-time virtual option for students in grades 5K-12. Unlike eLearning which was implemented under emergency conditions during last Spring's school shutdown, students in the Virtual Program will have a normal daily instructional schedule, earn grades, and receives timely teacher feedback in response to class or homework.

[Frequently Asked Questions](#)  
[Preguntas Frecuentes](#)

### CLICK HERE: VIRTUAL VS. ELEARNING COMPARISON



### Comparison of GCS Virtual Program and eLearning for Traditional In-Person Attendance

Virtual Program	Traditional with eLearning
Taught by Certified GCS Teacher	Taught by Certified GCS Teacher
100% online learning all year	Student moves between eLearning and in-person depending on COVID community spread
Teaches grade-level South Carolina Standards	Teaches grade-level South Carolina Standards
Face-to-face virtual instruction, but no in-person interaction	Face-to-face in-person instruction as permitted by COVID Community Spread (0, 1, 2, or 5 days per week) - some face-to-face virtual, depending on which Attendance Plan is being utilized*
Live and recorded lessons, daily schedule, grading, regular teacher/class interaction over virtual platform	Regular in-person attendance some days. Live and recorded lessons, Google Classroom assignments, occasional interaction over virtual platform, particularly when doing 100% eLearning*
Ability to participate in extracurricular activities as permitted by COVID Community Spread	Ability to participate in extracurricular activities as permitted by COVID Community Spread