

Alexander Elementary
1601 Bramlett Road
Greenville 29611

Σp 4,029 ft
 Σa 8,159 sq yd

Court 2
906.48 sq yd



Alexander
Elem. Bus
Loop
4,124 sq yd



Parent loop
2,279 sq yd



Court 1
849.9 sq yd



p: 24.3 yd
a: 39.02 sq yd
 Σp 0.76 mi
 Σa 8,159 sq yd

Parent loop
2,279 sq yd

F8

F1

Mapbox

0 20ft



906.48 sq yd

p: 24.3 yd

Σp 0.76 mi

a: 39.02 sq yd

Σa 8,159 sq yd

Alexander
Elem. Bus
Loop

4,124 sq yd

F3

F2

F1

F4

F5

F6

F7

F8

Mapbox

0 50ft



p: 24.3 yd
a: 39.02 sq yd

Σp 0.76 mi
 Σa 8,159 sq yd



F3

Court 2

906.48 sq yd



0 50ft

Mapbox

p: 24.3 yd
a: 39.02 sq yd

Σp 0.76 mi
 Σa 8,159 sq yd



Court 1

849.9 sq yd



Armstrong Elementary
8601 White Horse Rd.
Greenville 29617

Σp 7,295 ft
 Σa 11,539 sq yd

Court
269.07 sq yd

Armstrong
Elem. Bus
Loop

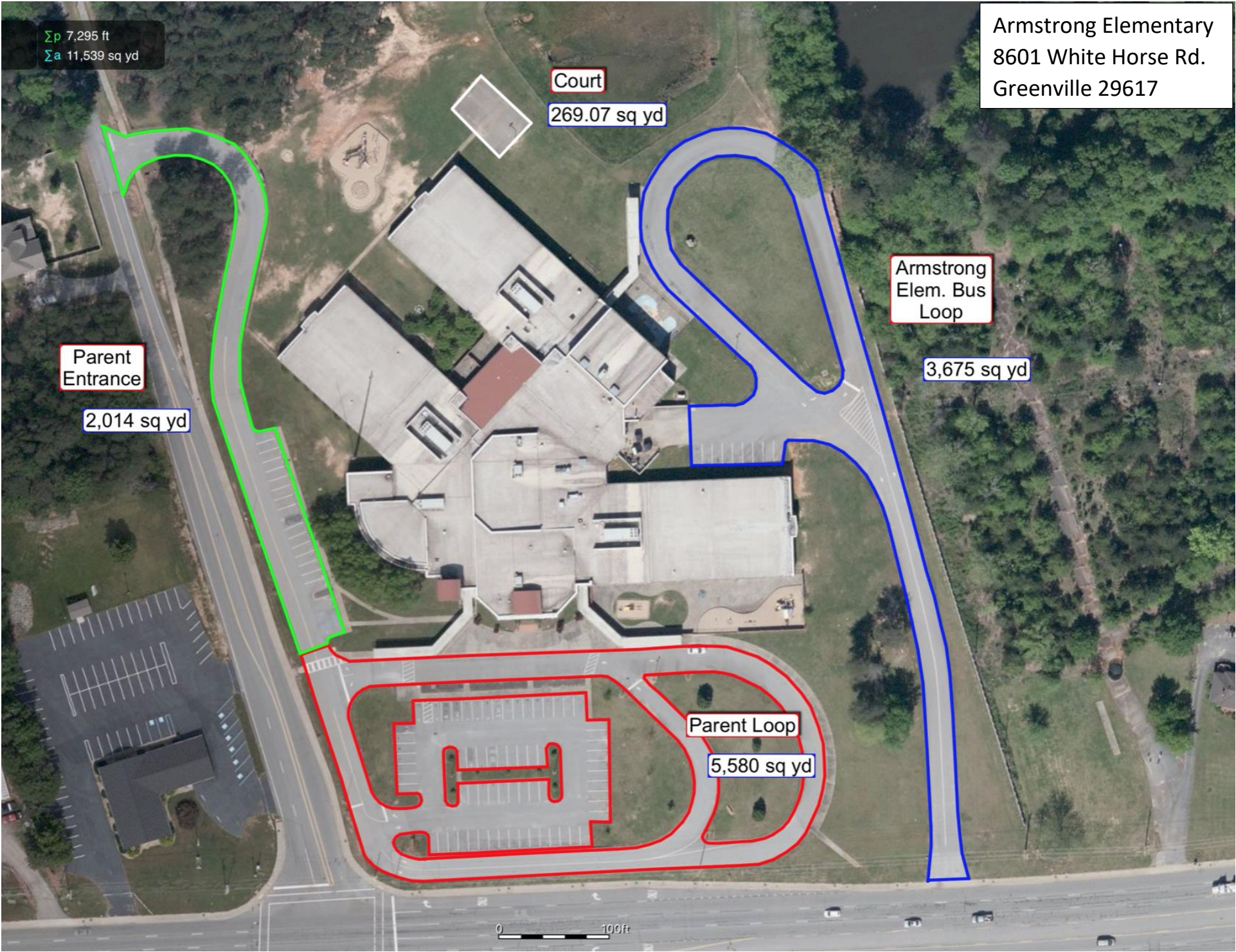
3,675 sq yd

Parent
Entrance

2,014 sq yd

Parent Loop
5,580 sq yd

0 100ft



p: 373.8 ft
a: 230.31 sq yd

Σp 7,295 ft
 Σa 11,539 sq yd

Armstrong
Elem. Bus
Loop

3,675 sq yd

F4

F5

F2

F4

F3

F1

F3

Par 5 580 sq yd

Google

50ft

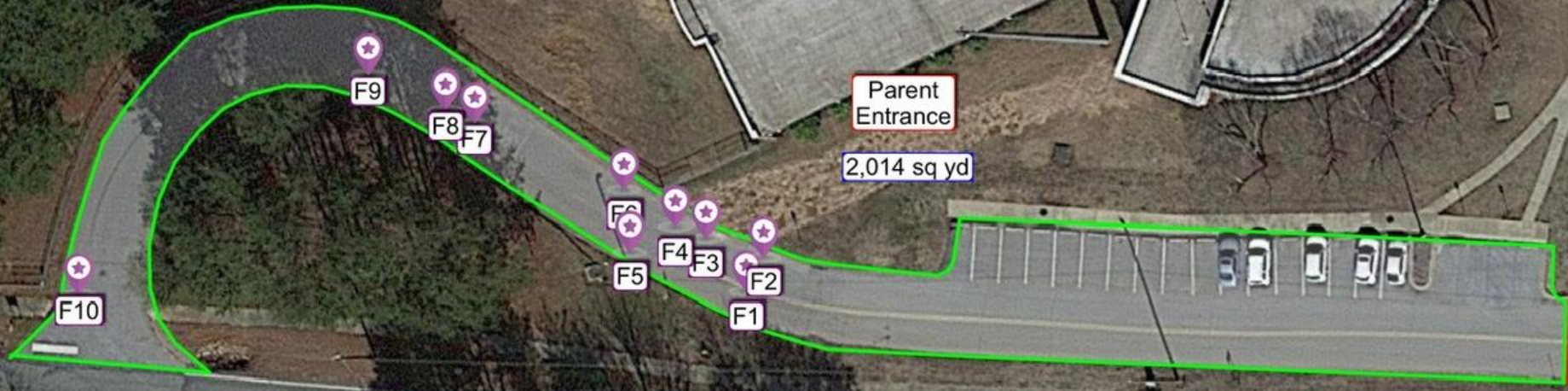


p: 373.8 ft
a: 230.31 sq yd

Σp 7,295 ft
 Σa 11,539 sq yd



Parent Entrance
2,014 sq yd



p: 373.8 ft
a: 230.31 sq yd

Σp 7,295 ft
 Σa 11,539 sq yd

Parent Loop

5,580 sq yd

F5

F4

F1

F2

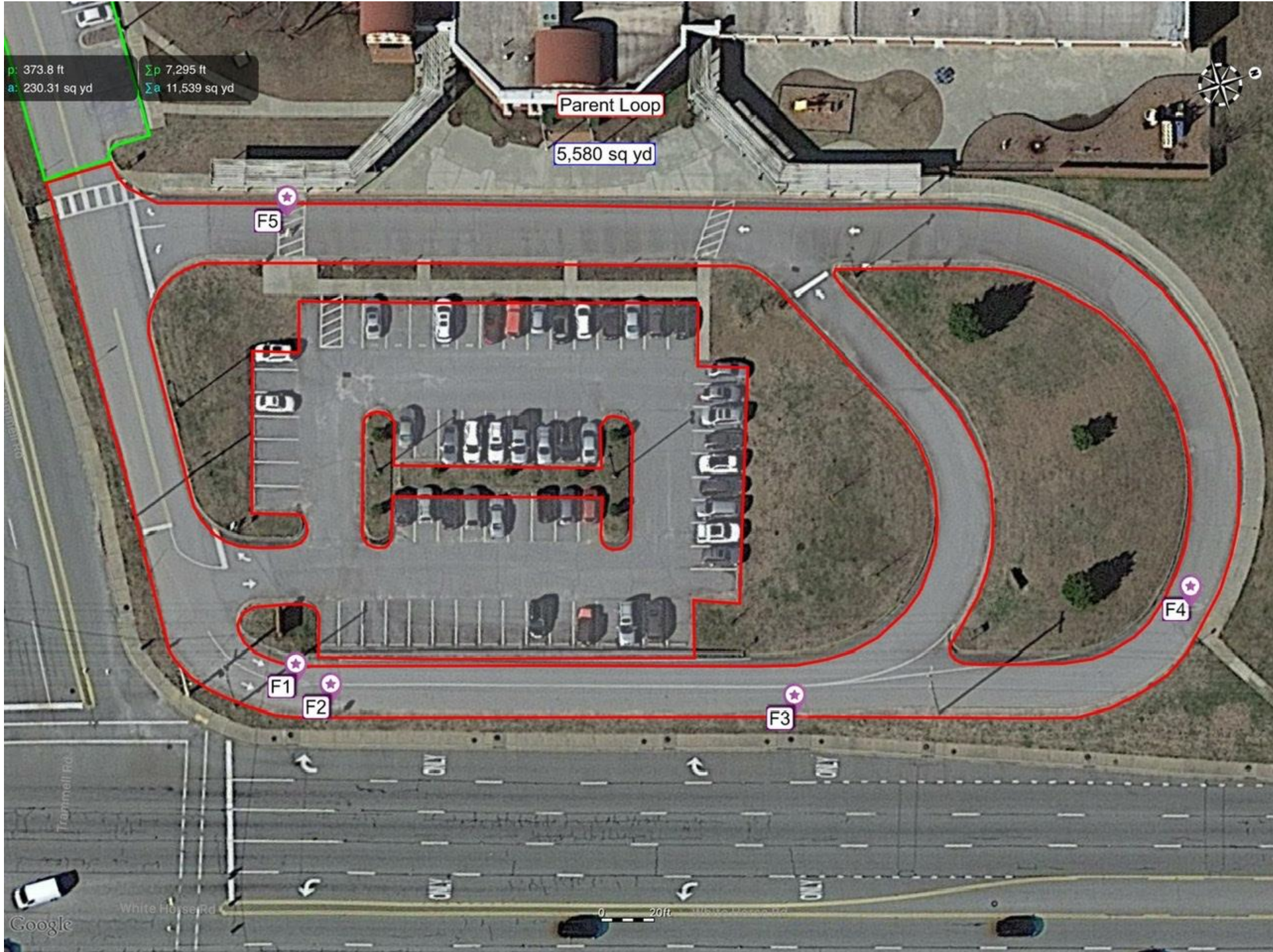
F3

Google

Trammell Rd

White Horse Rd

0 20ft



p: 373.8 ft
a: 230.31 sq yd

Σp 7,295 ft
 Σa 11,539 sq yd



Court

269.07 sq yd

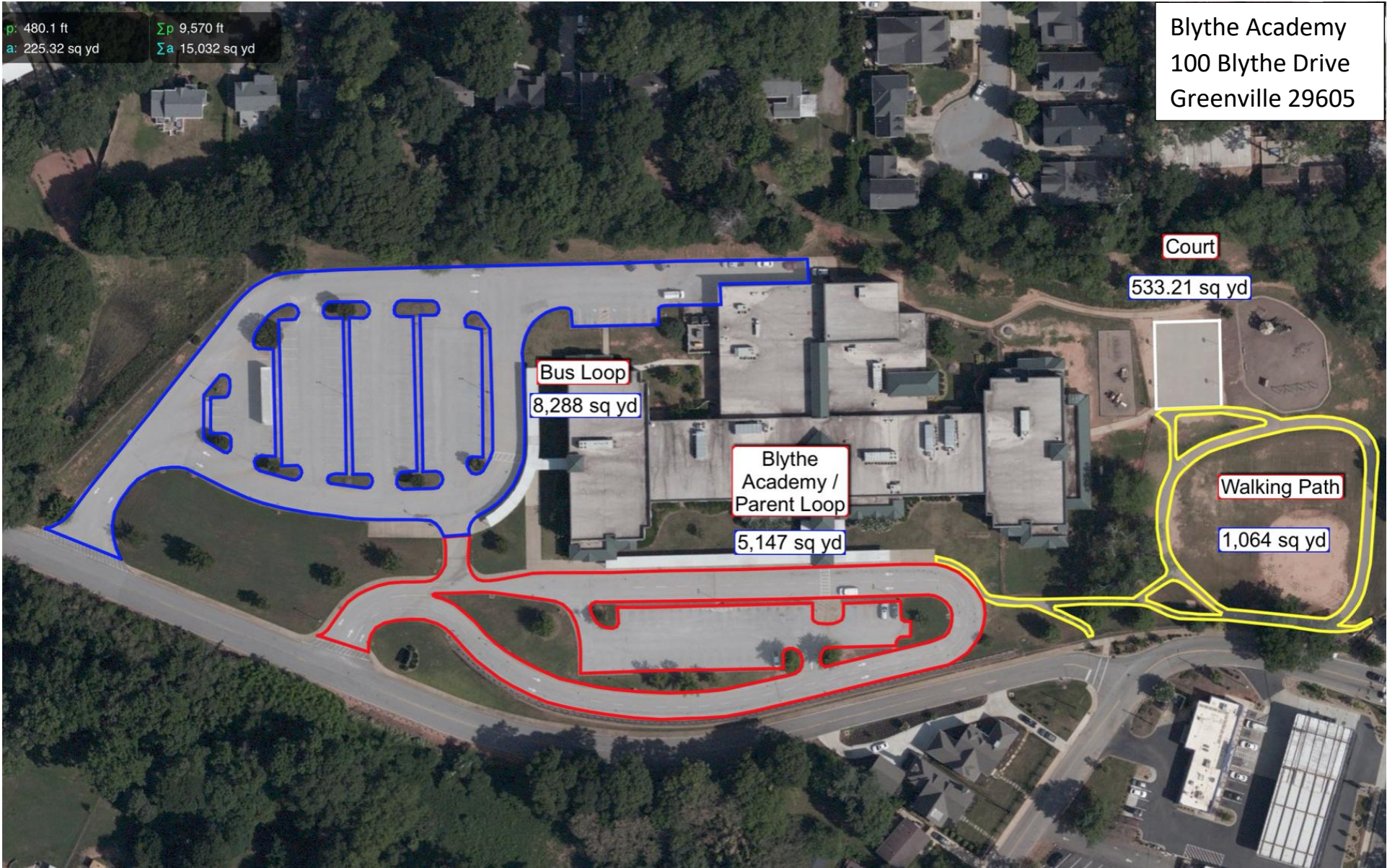


0 20ft

p: 480.1 ft
a: 225.32 sq yd

Σp 9,570 ft
 Σa 15,032 sq yd

Blythe Academy
100 Blythe Drive
Greenville 29605



Bus Loop
8,288 sq yd

Blythe Academy /
Parent Loop
5,147 sq yd

Court
533.21 sq yd

Walking Path
1,064 sq yd



p: 480.1 ft
a: 225.32 sq yd
Σp: 9,570 ft
Σa: 15,032 sq yd

Blythe
Academy /
Parent Loop

5,147 sq yd

Blythe Dr

Blythe Dr

0 50ft

Google

p: 480.1 ft
a: 225.32 sq yd

Σp 9,570 ft
 Σa 15,032 sq yd

Court

533.21 sq yd

0 20ft



p: 480.1 ft
a: 225.32 sq yd

Σp 9,570 ft
 Σa 15,032 sq yd

Walking Path

1,064 sq yd

F1

Google

0 50ft



p: 480.1 ft
a: 225.32 sq yd

Σp 9,570 ft
 Σa 15,032 sq yd

Bus Loop

8,288 sq yd

F2

Google

0 50ft



p: 373.2 ft
a: 168.52 sq yd

Σp 4,732 ft
 Σa 7,890 sq yd

Cherrydale Elementary
302 Perry Rd.
Greenville 29609

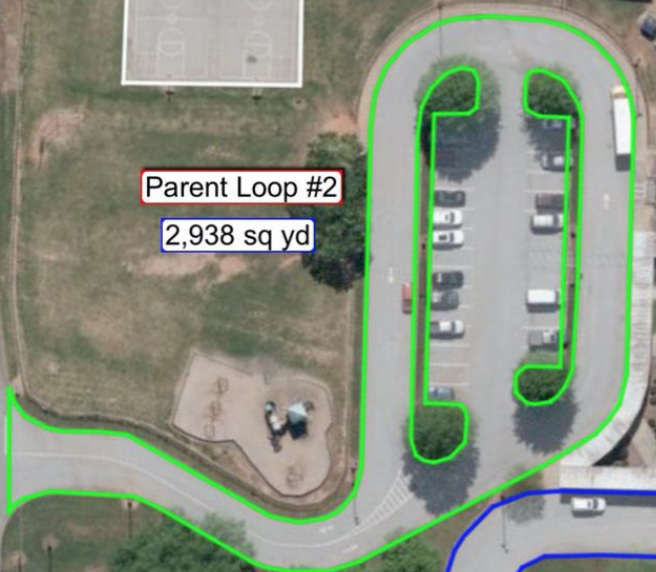
Court

536.37 sq yd



Parent Loop #2

2,938 sq yd



Cherrydale
Elem / Parent
Loop

3,529 sq yd



Bus Loop

886.41 sq yd



p: 373.2 ft
a: 168.52 sq yd

Σp 4,732 ft
 Σa 7,890 sq yd

F1

Parent Loop 2

2,938 sq yd

Court 36.37 sq yd



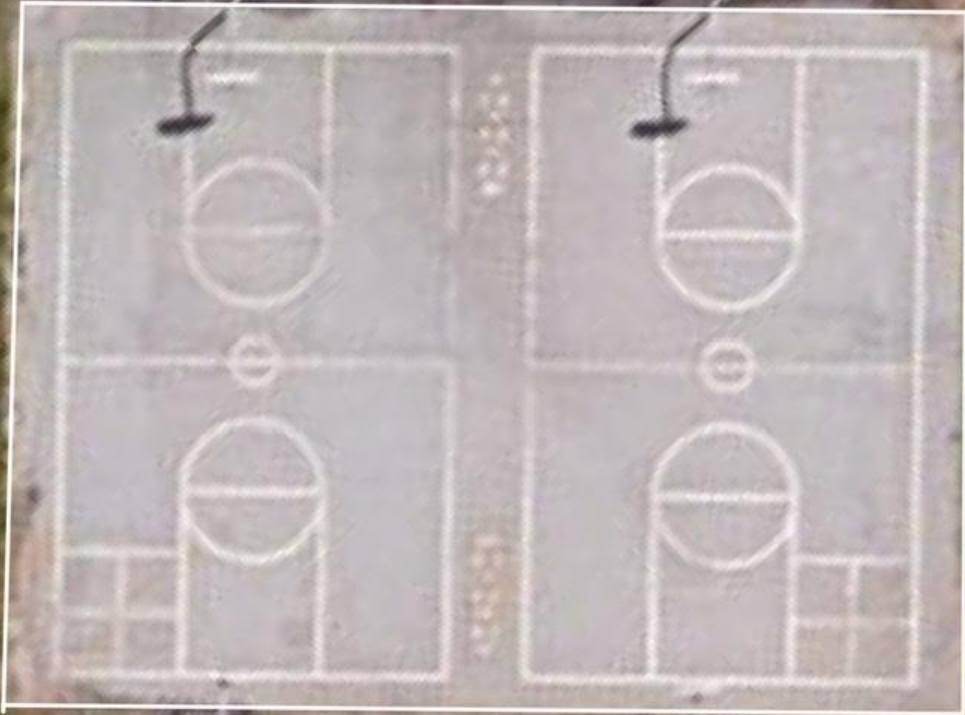
p: 373.2 ft
a: 168.52 sq yd

Σp 4,732 ft
 Σa 7,890 sq yd



Court

536.37 sq yd



p: 373.2 ft
a: 168.52 sq yd

Σp 4,732 ft
 Σa 7,890 sq yd



Bus Loop

886.41 sq yd

0 20ft

Google



p: 373.2 ft
a: 168.52 sq yd

Σp 4,732 ft
 Σa 7,890 sq yd

Cherrydale
Elem / Parent
Loop

3,529 sq yd



Greenview Child Development Center
625 Old Piedmont Highway
Greenville 29605

p: 688.8 ft Σp 6,536 ft
a: 621.24 sq yd Σa 9,957 sq yd

Greenview
CDC/ Parent
Loop

5,743 sq yd

Bus Loop

2,045 sq yd

Path 2

261.66 sq yd

Path 1

62.67 sq yd

Court 1

602.05 sq yd

Court 2

621.01 sq yd

Walking Path

621.24 sq yd

p: 688.8 ft
a: 621.24 sq yd

Σp 6,536 ft
 Σa 9,957 sq yd

Path 1
62.67 sq yd

F1

Bus Loop
2,045 sq yd

inview
Parent
top

p: 688.8 ft
a: 621.24 sq yd

Σp 6,536 ft
 Σa 9,957 sq yd



F1

F2

Greenview
CDC/ Parent
Loop

5,743 sq yd

p: 688.8 ft
a: 621.24 sq yd

Σp 6,536 ft
 Σa 9,957 sq yd



Walking Path

621.24 sq yd

Court 2

621.01 sq yd

Court 1

602.05 sq yd

F3

p: 688.8 ft
a: 621.24 sq yd

Σp 6,536 ft
 Σa 9,957 sq yd



Court 2

621.01 sq yd

yd



p: 688.8 ft
a: 621.24 sq yd

Σp 6,536 ft
 Σa 9,957 sq yd



Path 2

261.66 sq yd

Court 1

602.05 sq yd

F3

F2

F1

F1

Path 1

62.67 sq yd

Paul L. Dunbar Child Development Center
200 Morgan Street
Greer 29651

p: 1,061 ft
a: 2,429 sq yd

Σp 2,482 ft
 Σa 5,726 sq yd

Bus Loop
2,429 sq yd

Paul L Dunbar
CDC / Main
Entrance

3,297 sq yd

p: 1,061 ft
a: 2,429 sq yd

Σp 2,482 ft
 Σa 5,726 sq yd



Paul L Dunbar
CDC / Main
Entrance

3,297 sq yd

p: 1,061 ft
a: 2,429 sq yd

Σp 2,482 ft
 Σa 5,726 sq yd



Bus Loop

2,429 sq yd

F1

Monarch Elementary
224 Five Forks Road
Simpsonville 29681

p: 283.4 ft
a: 540.21 sq yd
 Σp 10,272 ft
 Σa 18,259 sq yd

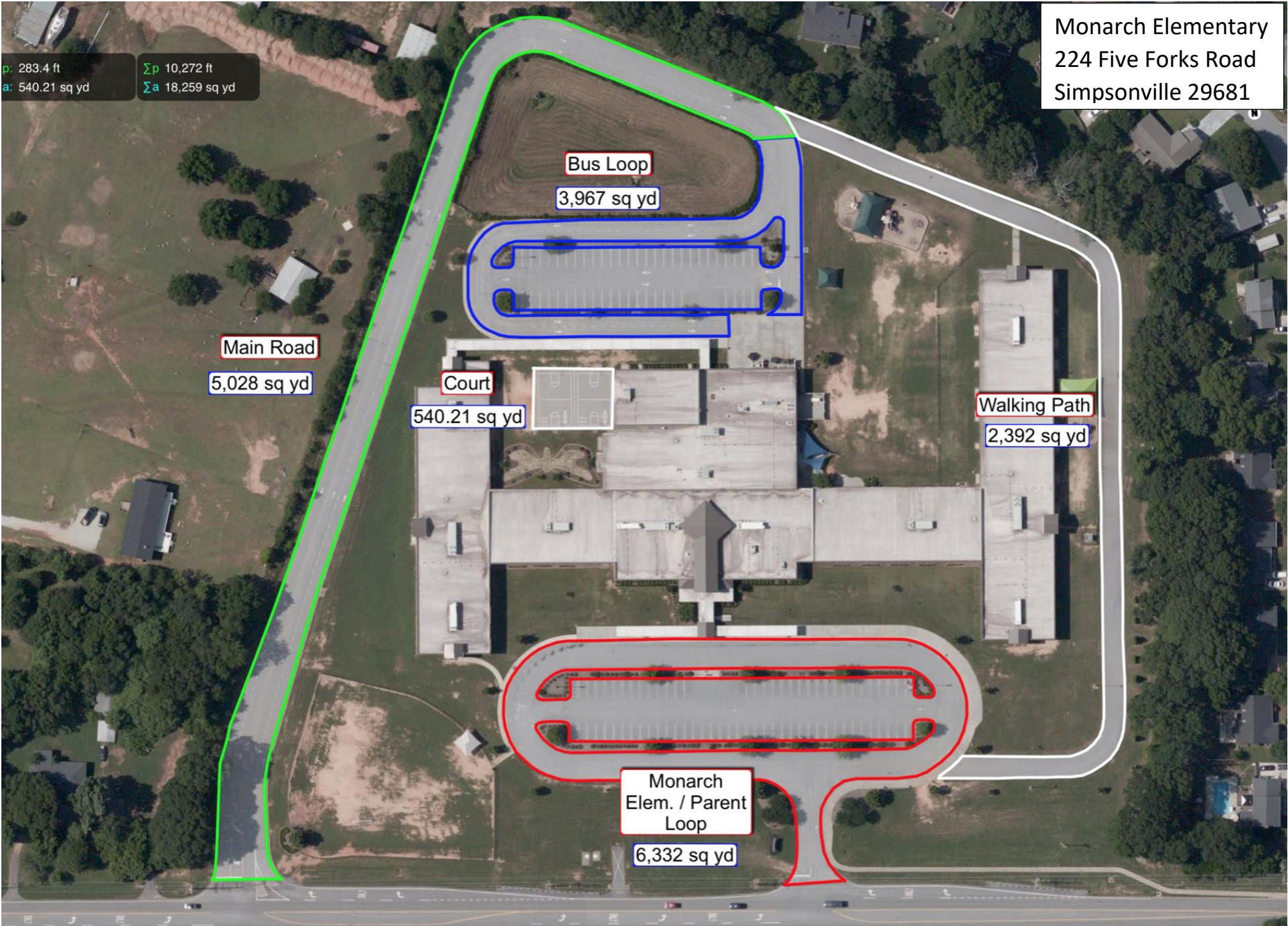
Bus Loop
3,967 sq yd

Main Road
5,028 sq yd

Court
540.21 sq yd

Walking Path
2,392 sq yd

Monarch
Elem. / Parent
Loop
6,332 sq yd



p: 283.4 ft
a: 540.21 sq yd

Σp 10,272 ft
 Σa 18,259 sq yd



Monarch
Elem. / Parent
Loop

6,332 sq yd

p: 283,4 ft
a: 540,21 sq yd
 Σp 10,272 ft
 Σa 18,259 sq yd

Elem. 7 Parent Loop

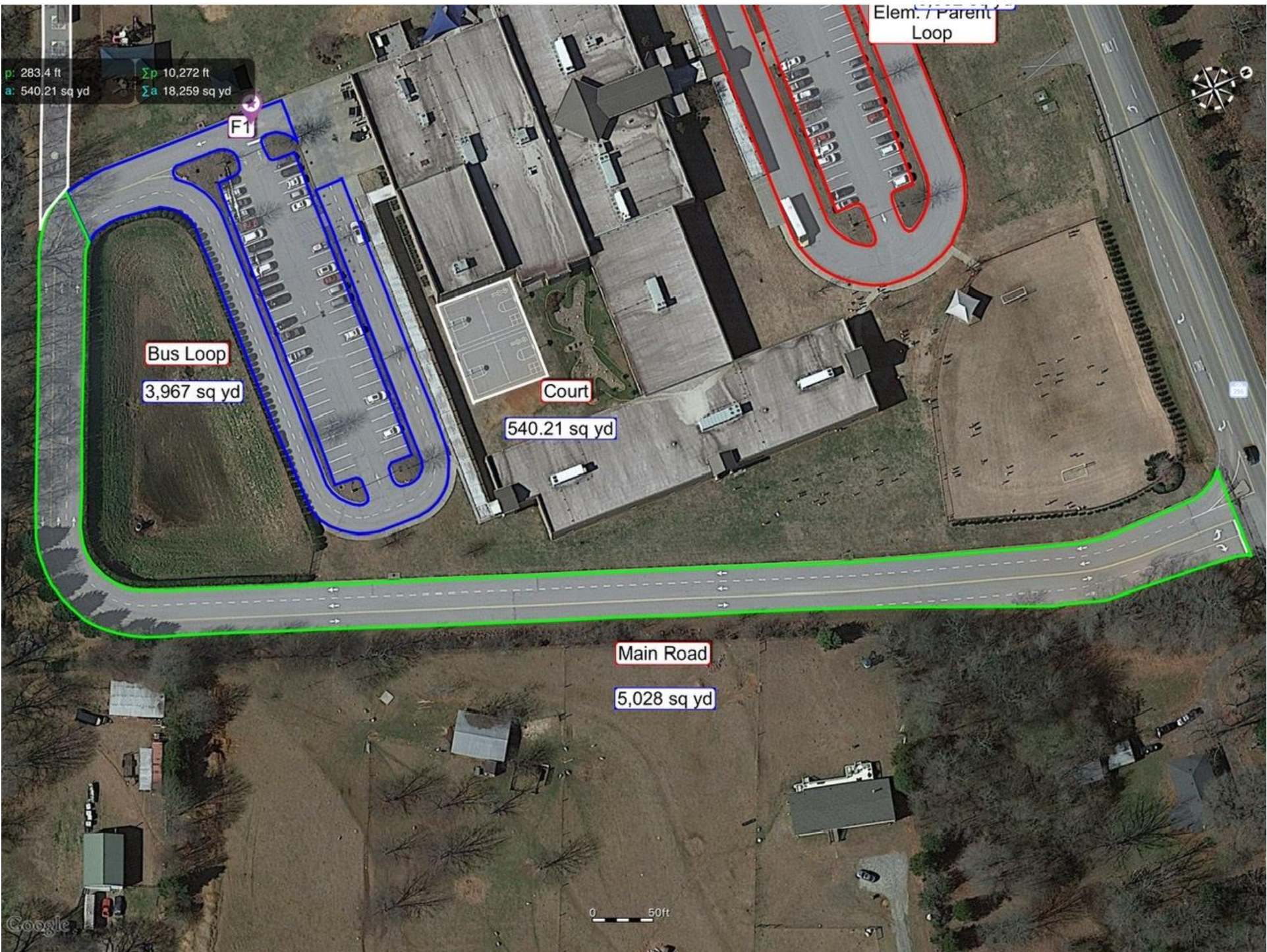
Bus Loop
3,967 sq yd

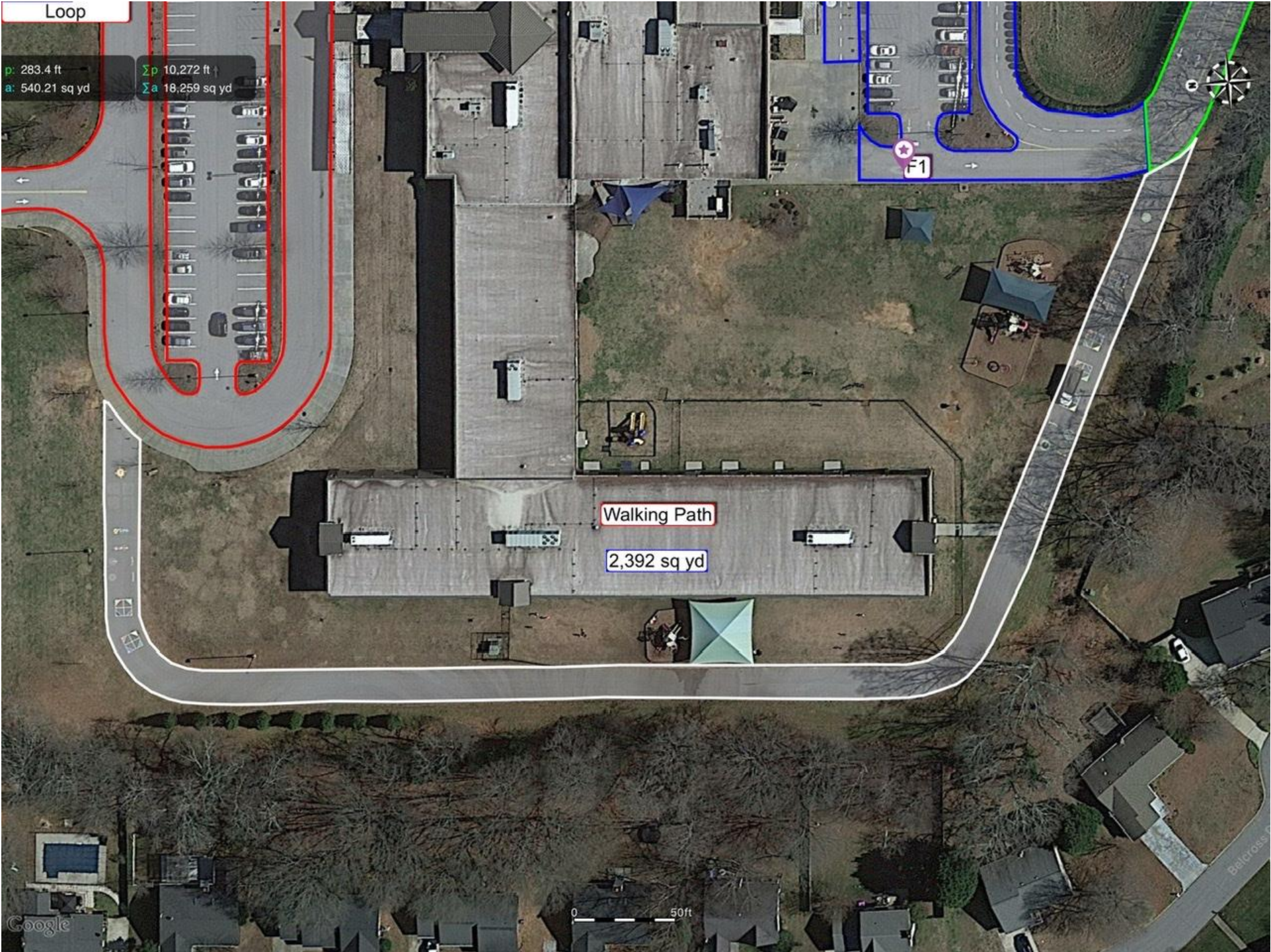
Court
540.21 sq yd

Main Road
5,028 sq yd

Google

0 50ft





Loop

p: 283.4 ft
a: 540.21 sq yd

Σp : 10,272 ft
 Σa : 18,259 sq yd

Walking Path

2,392 sq yd

0 50ft

Google

Baldcross

p: 283.4 ft
a: 540.21 sq yd

Σp 10,272 ft
 Σa 18,259 sq yd

540.21 sq yd



Bus Loop

3,967 sq yd

0 20ft

Monaview Elementary
10 Monaview St.
Greenville 29617

Court

531.92 sq yd

Walking Path

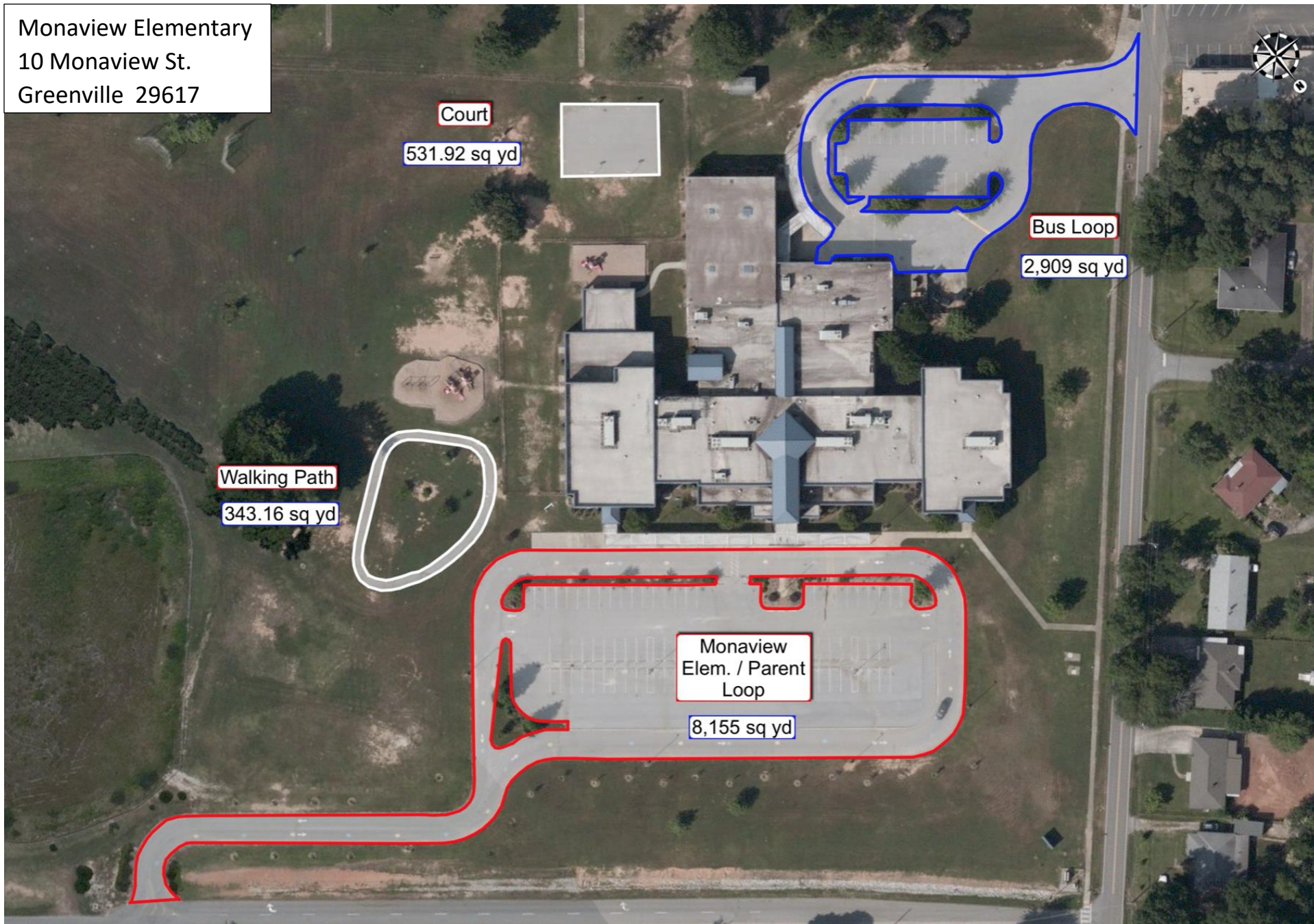
343.16 sq yd

Bus Loop

2,909 sq yd

Monaview
Elem. / Parent
Loop

8,155 sq yd

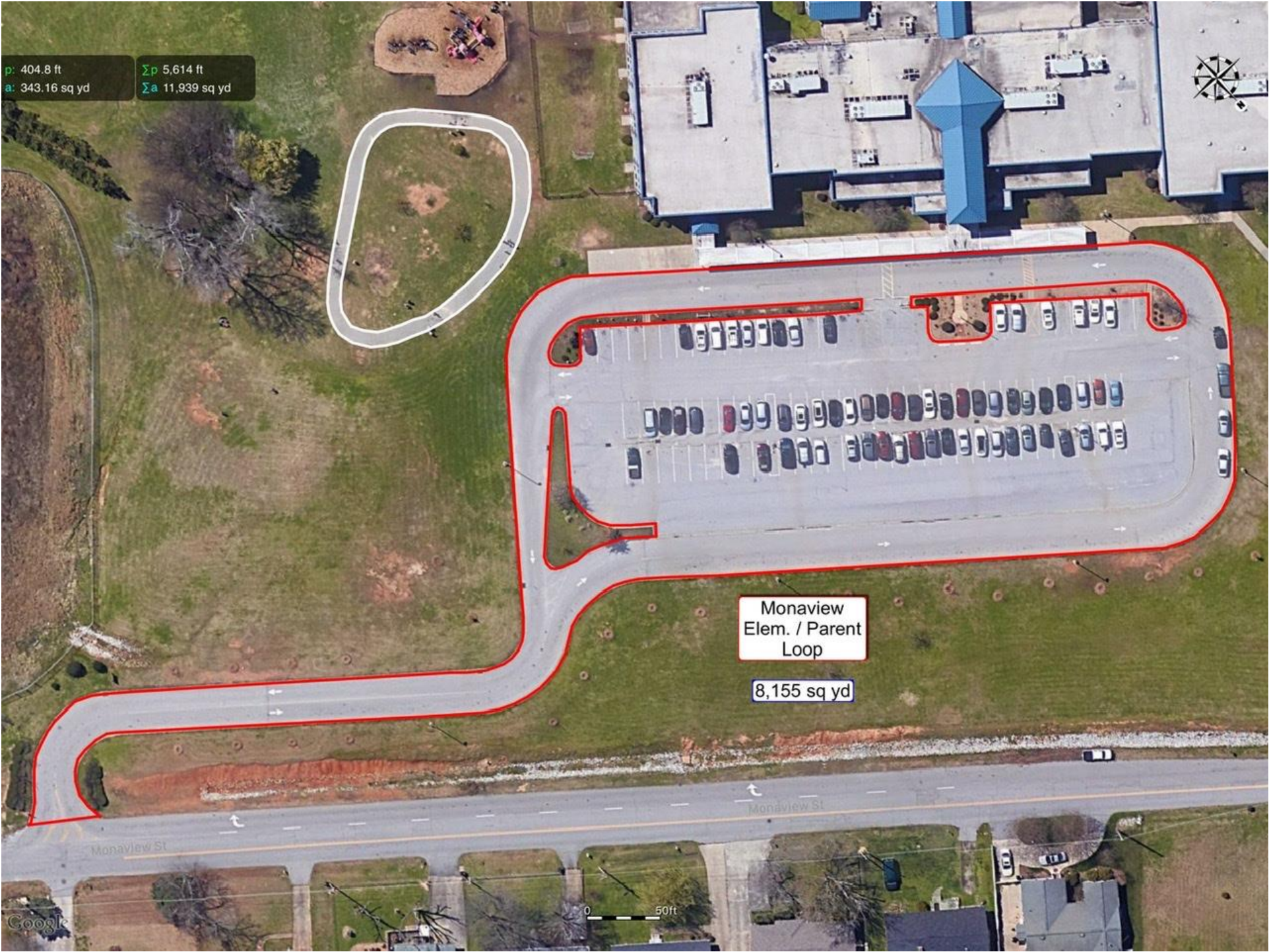


p: 404.8 ft
a: 343.16 sq yd

Σp 5,614 ft
 Σa 11,939 sq yd

Monaview
Elem. / Parent
Loop

8,155 sq yd



p: 404.8 ft
a: 343.16 sq yd

Σp 5,614 ft
 Σa 11,939 sq yd



Walking Path

343.16 sq yd

0 20ft

Google

p: 404.8 ft
a: 343.16 sq yd

Σp 5,614 ft
 Σa 11,939 sq yd



Court

531.92 sq yd



Google



p: 404.8 ft
a: 343.16 sq yd

Σp 5,614 ft
 Σa 11,939 sq yd



Bus Loop
2,909 sq yd

F1



0 20ft

Google



Paris Elementary
32 East Belvue Road
Taylors 29687

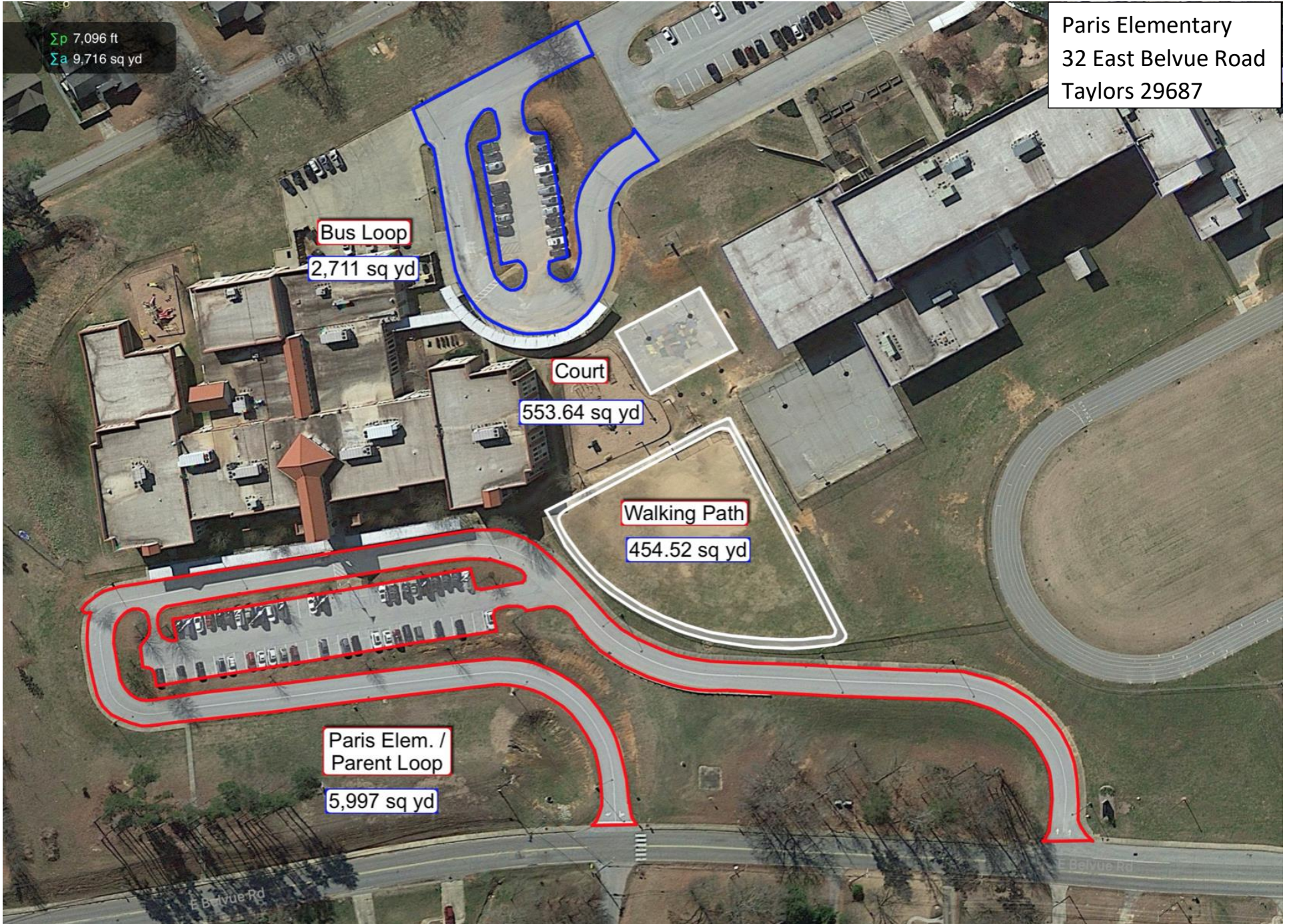
Σp 7,096 ft
 Σa 9,716 sq yd

Bus Loop
2,711 sq yd

Court
553.64 sq yd

Walking Path
454.52 sq yd

Paris Elem. /
Parent Loop
5,997 sq yd





p: 695.7 ft
a: 454.51 sq yd
 Σp : 7,096 ft
 Σa : 9,716 sq yd

2,711 sq yd

Court

553.64 sq yd

Walking Path

454.51 sq yd

Paris Elem. /
Parent Loop

5,997 sq yd

E Bellevue Rd

E Bellevue Rd

Paris

Google

0 50ft



p: 695.7 ft
a: 454.51 sq yd

Σp 7,096 ft
 Σa 9,716 sq yd

Court

553.64 sq yd

Bus Loop 2,711 sq yd

p: 695.7 ft
a: 454.51 sq yd

Σp 7,096 ft
 Σa 9,716 sq yd

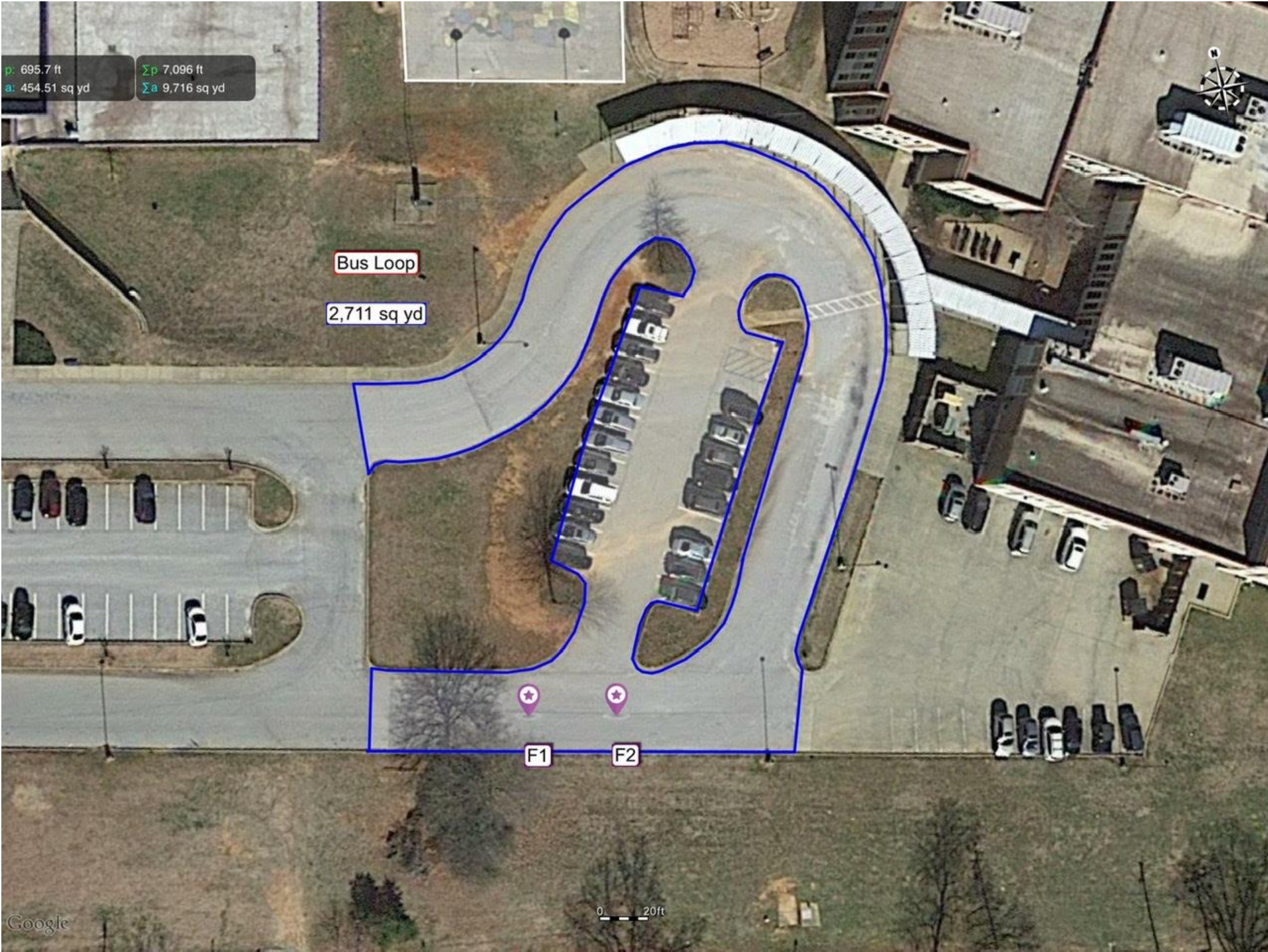
Bus Loop

2,711 sq yd

F1

F2

0 20ft



Sevier Middle
1000 Piedmont Park Road
Greenville 29609

p: 1,471 ft
a: 3,705 sq yd
 Σp 10,200 ft
 Σa 17,923 sq yd

Court
1,437 sq yd

Track
3,705 sq yd

Tennis Courts
1,654 sq yd

Bus Loop
5,044 sq yd

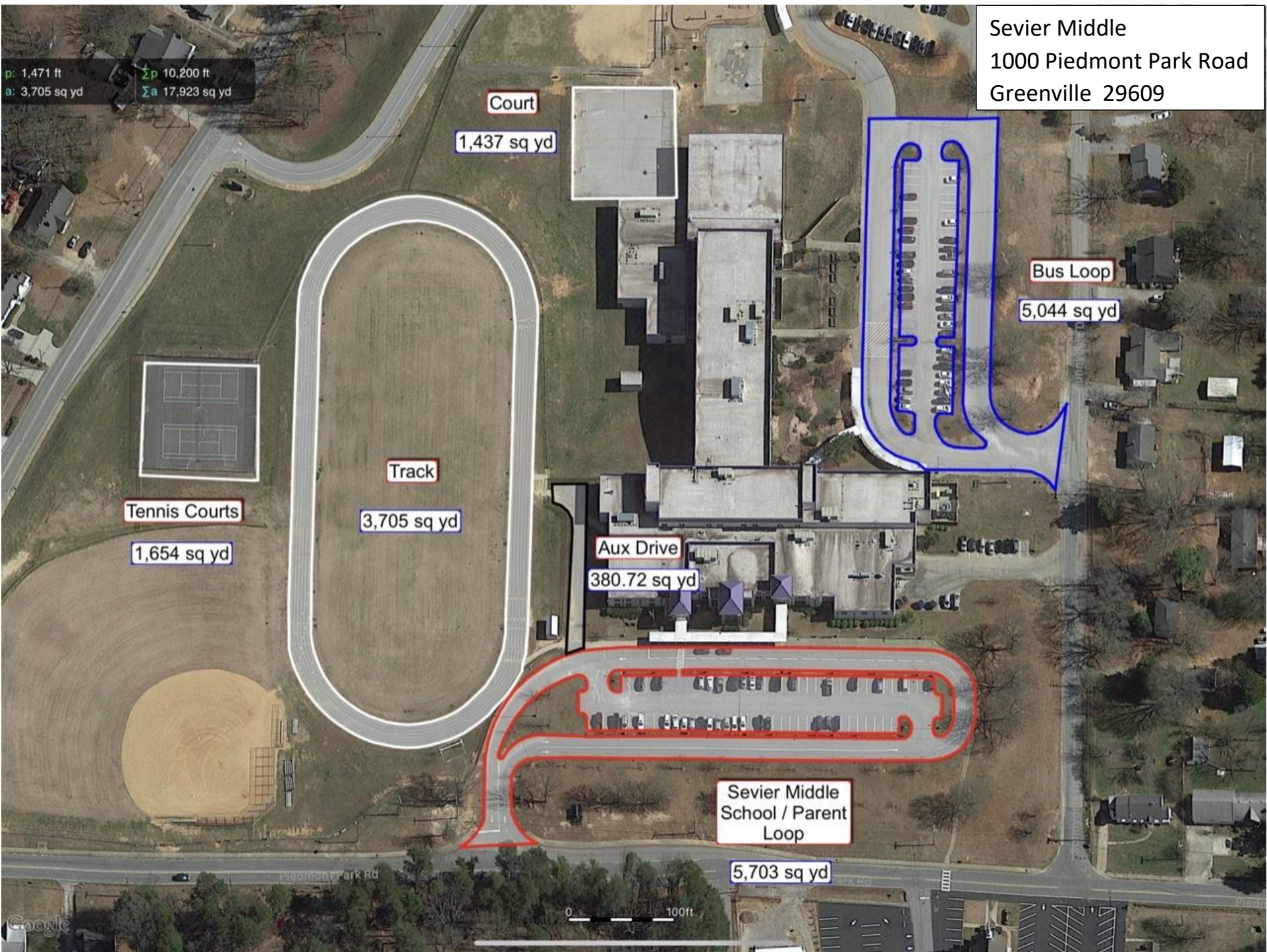
Aux Drive
380.72 sq yd

Sevier Middle School / Parent Loop
5,703 sq yd

Piedmont Park Rd

Google

0 100ft



p: 1,471 ft
a: 3,705 sq yd

Σp : 10,200 ft
 Σa : 17,923 sq yd

Sevier Middle School / Parent Loop

5,702 sq yd

p: 1,471 ft
a: 3,705 sq yd

Σp : 10,200 ft
 Σa : 17,923 sq yd



Bus Loop

5,044 sq yd

Sunnydale Dr

Sunnydale Dr

Google

0 20ft

p: 1,471 ft
a: 3,705 sq yd

Σp 10,200 ft
 Σa 17,923 sq yd



Aux Drive

380.72 sq yd

0 20ft

Google

p: 1,471 ft
a: 3,705 sq yd

Σp 10,200 ft
 Σa 17,923 sq yd

Track

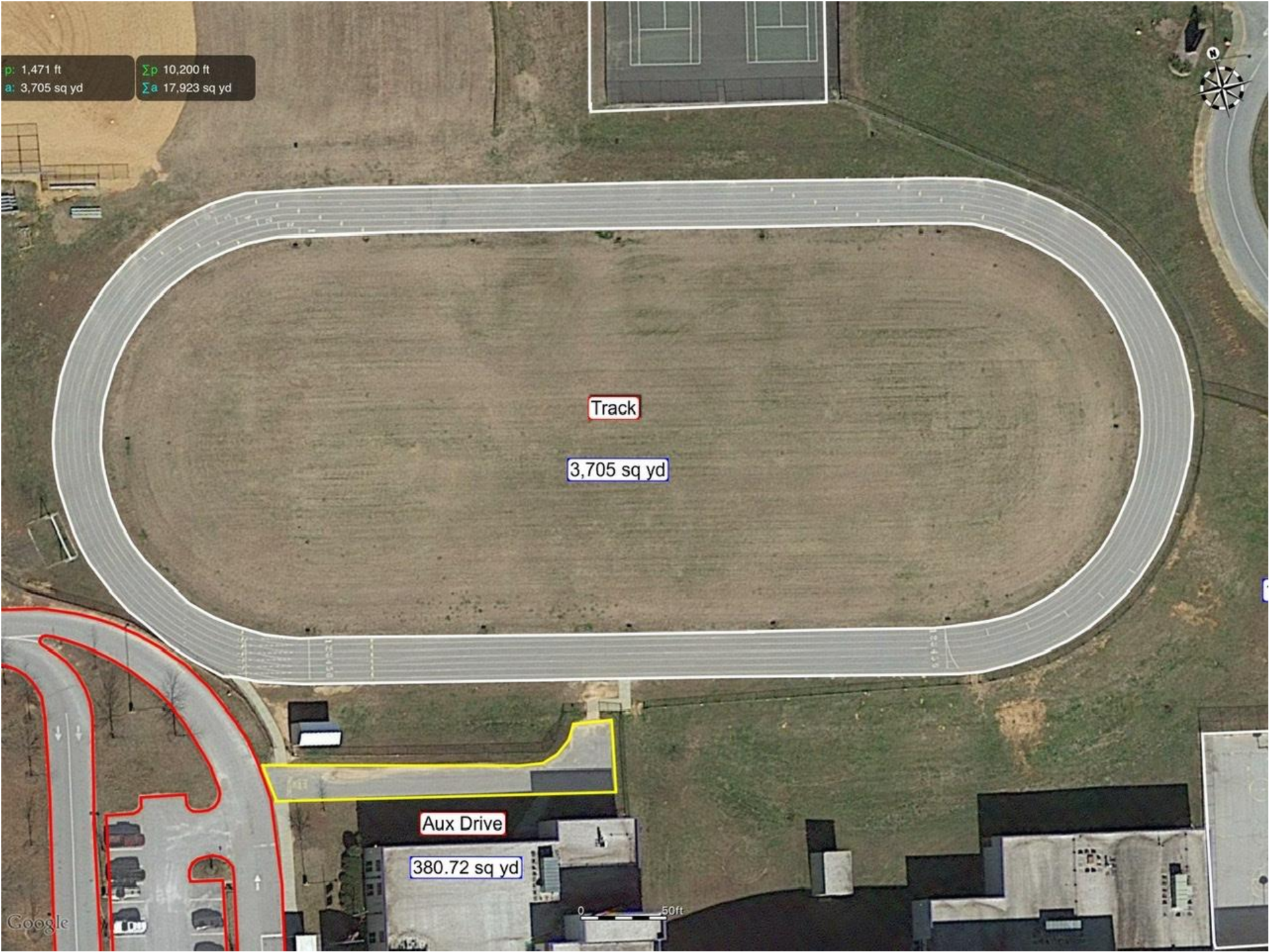
3,705 sq yd

Aux Drive

380.72 sq yd

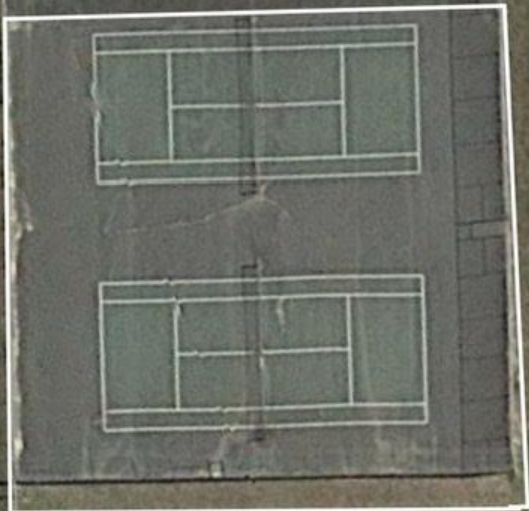
Google

0 50ft



p: 1,471 ft
a: 3,705 sq yd

Σp 10,200 ft
 Σa 17,923 sq yd



Tennis Courts

1,654 sq yd

0 20ft

Google

p: 1,471 ft
a: 3,705 sq yd

Σp 10,200 ft
 Σa 17,923 sq yd

Court

1,437 sq yd



Southside High
6630 Frontage at White Horse Rd
Greenville 29605-3300



p: 1,108 ft
a: 8,147 sq yd

Σp 14,855 ft
 Σa 40,255 sq yd

Access Road 2

314.22 sq yd

Google

0 20ft



p: 1,108 ft
a: 8,147 sq yd

Σp 14,855 ft
 Σa 40,255 sq yd

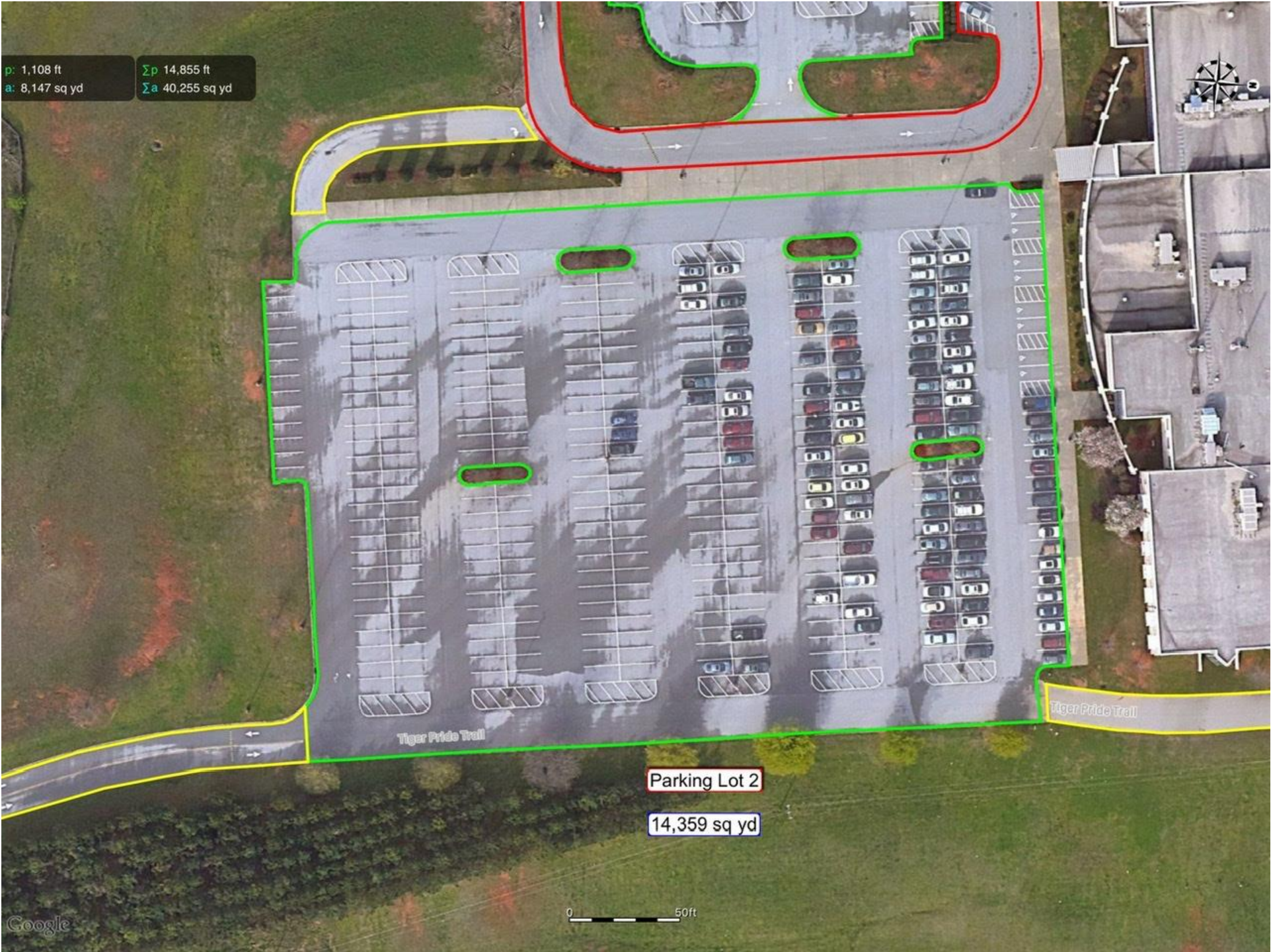
Parking Lot 1

4,853 sq yd



p: 1,108 ft
a: 8,147 sq yd

Σp 14,855 ft
 Σa 40,255 sq yd



Parking Lot 2

14,359 sq yd

p: 1,108 ft
a: 8,147 sq yd

Σp 14,855 ft
 Σa 40,255 sq yd



Access Road 3

1,905 sq yd

Tiger Pride Trail

Tiger Pride Trail

Pa

Tiger Pride Trail

0 50ft

Google

p: 1,108 ft
a: 8,147 sq yd

Σp 14,855 ft
 Σa 40,255 sq yd

Google

Tiger Pride Trail

Tiger Pride Trail

Tiger Pride Trail

0 20ft

Court
1,089 sq yd

Jacobs Rd

Jacobs Rd

Hard on St



p: 1,108 ft
a: 8,147 sq yd

Σp 14,855 ft
 Σa 40,255 sq yd



Southside
High / Main
Entrance

7,259 sq yd

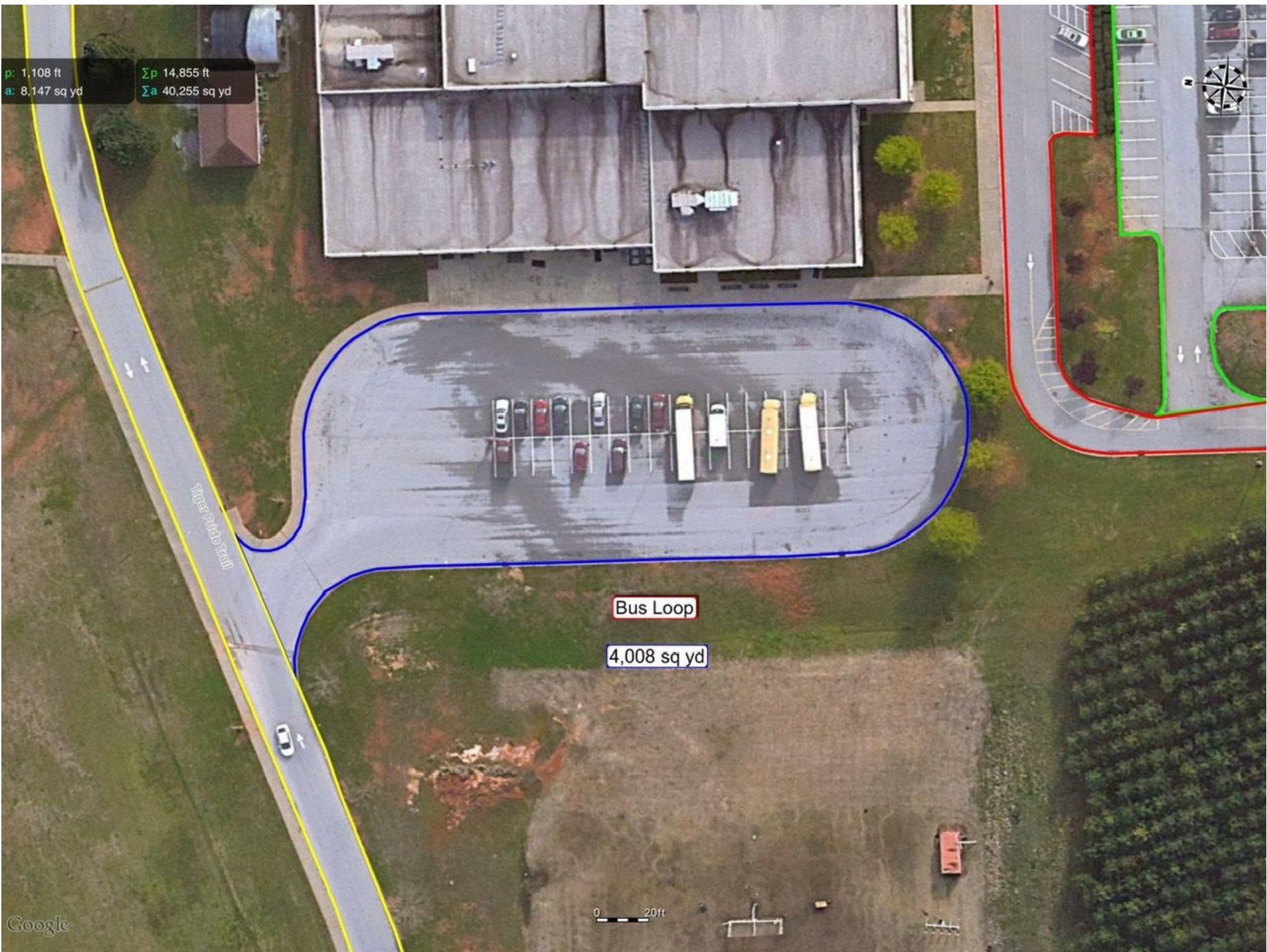
p: 1,108 ft
a: 8,147 sq yd

Σp 14,855 ft
 Σa 40,255 sq yd

Bus Loop

4,008 sq yd

0 20ft



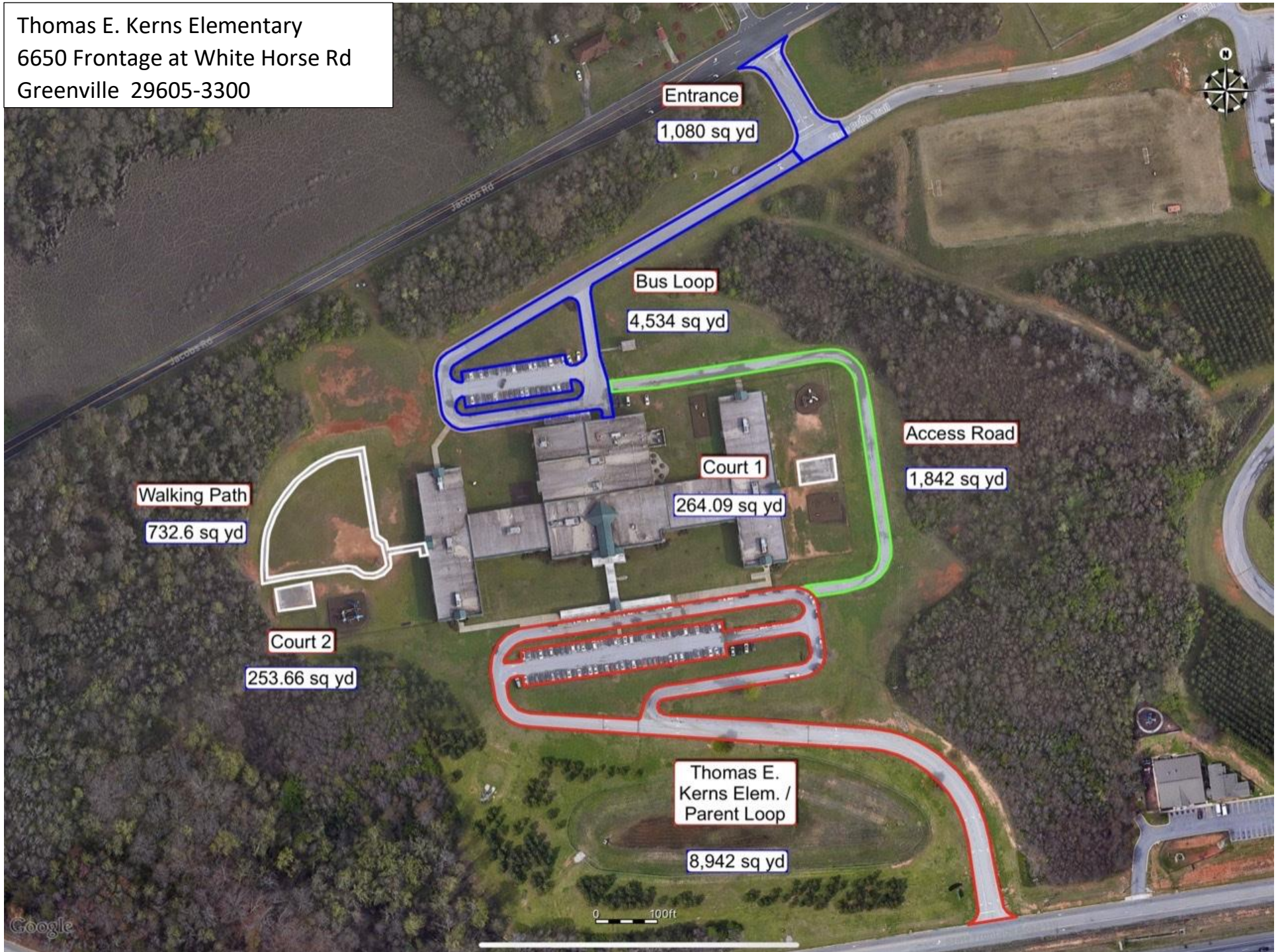
p: 1,108 ft
a: 8,147 sq yd

Σp 14,855 ft
 Σa 40,255 sq yd

Access Road 1
4,702 sq yd



Thomas E. Kerns Elementary
6650 Frontage at White Horse Rd
Greenville 29605-3300



p: 893.1 ft
a: 732.6 sq yd

Σp 12,392 ft
 Σa 17,649 sq yd



Walking Path

732.6 sq yd

F1

F2



Court 2

253.66 sq yd



0 20ft



p: 893.1 ft
a: 732.6 sq yd

Σp 12,392 ft
 Σa 17,649 sq yd

Court 1

264.09 sq yd

1,842 sq yd



F1

F2

F3

Thomas E.
Kerns Elem. /
Parent Loop

8,942 sq yd

0 50ft

p: 893.1 ft Σp 12,392 ft
a: 732.6 sq yd Σa 17,649 sq yd

Jacobs Rd

Jacobs Rd

Jacobs Rd



F2

F1

Bus Loop
4,534 sq yd

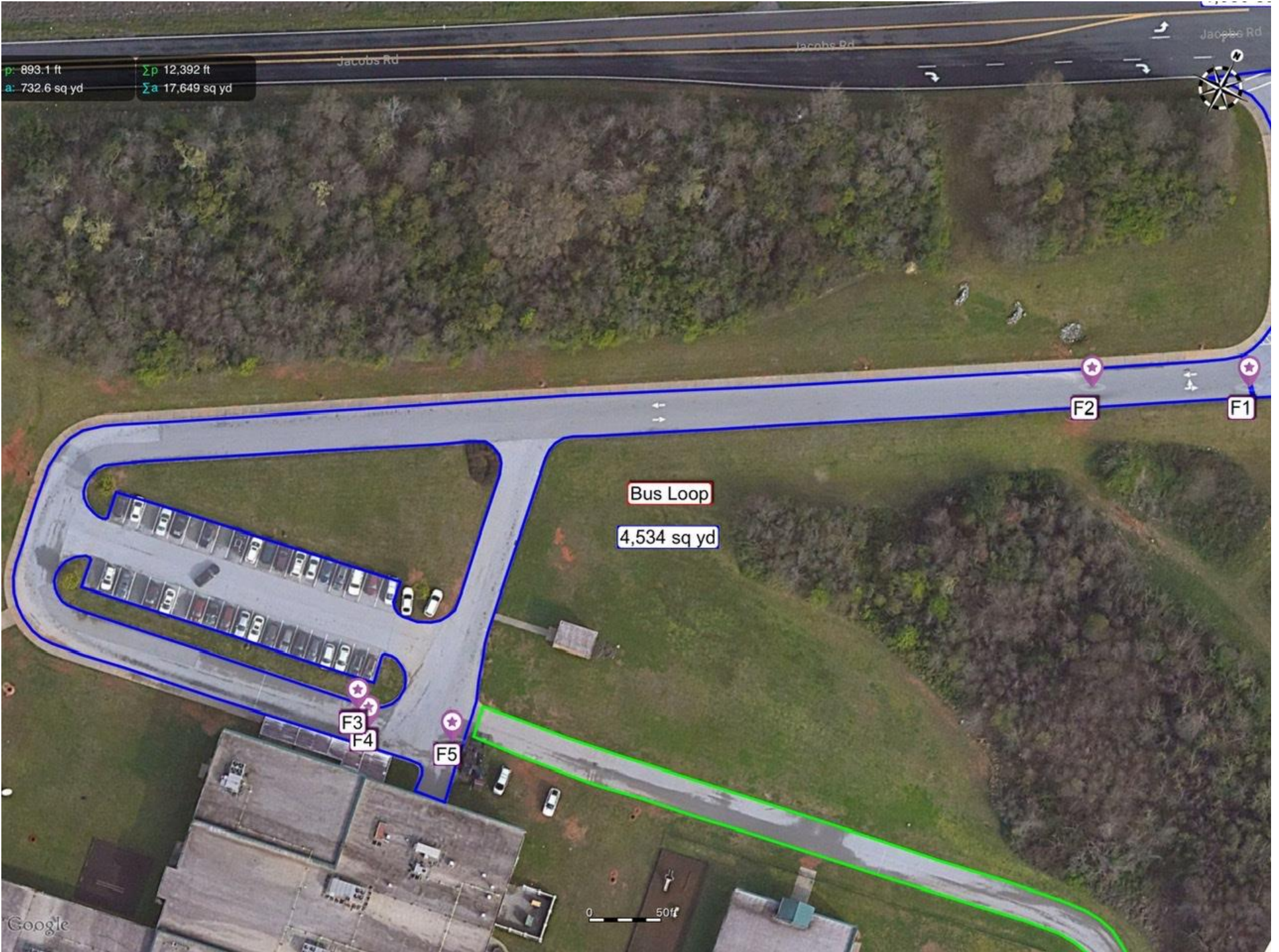
F3

F4

F5

Google

0 50ft



p: 893.1 ft
a: 732.6 sq yd

Σp 12,392 ft
 Σa 17,649 sq yd



Entrance
1,080 sq yd

F1

F2

F3

F4

F2

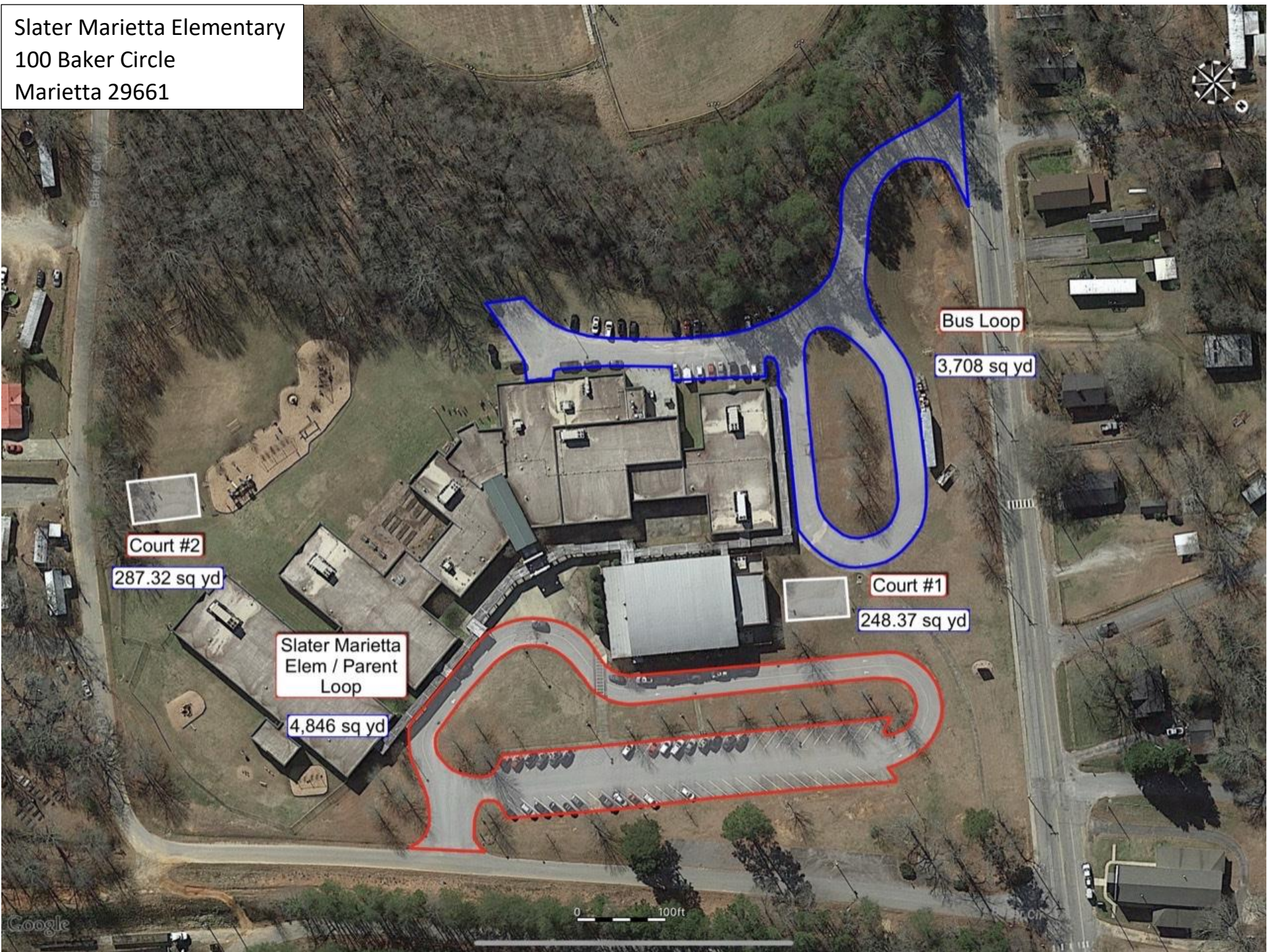
F1

Tiger Pride Trail

0 20ft

Google

Slater Marietta Elementary
100 Baker Circle
Marietta 29661



Court #2

287.32 sq yd

Slater Marietta
Elem / Parent
Loop

4,846 sq yd

Bus Loop

3,708 sq yd

Court #1

248.37 sq yd

0 100ft

Google

p: 194.1 ft
a: 248.37 sq yd

Σp 5,155 ft
 Σa 9,090 sq yd



Court 2

287.32 sq yd

p: 194.1 ft
a: 248.37 sq yd

Σp 5,155 ft
 Σa 9,090 sq yd



Court 1
248.37 sq yd

F2

F1

Slater Marietta
Elem / Parent
Loop

4,846 sq yd

p: 194.1 ft
a: 248.37 sq yd

Σp 5,155 ft
 Σa 9,090 sq yd



Bus Loop

3,708 sq yd



p: 194.1 ft
a: 248.37 sq yd

Σp 5,155 ft
 Σa 9,090 sq yd



Court 1

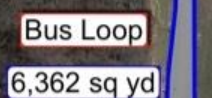
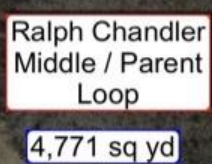
248.37 sq yd

F2

F1

Ralph Chandler Middle
4231 Fork Shoals Road
Simpsonville 29680

p: 473.0 ft Σp 14,216 ft
a: 424.1 sq yd Σa 18,414 sq yd



p: 473.0 ft
a: 424.1 sq yd

Σp : 15,423 ft
 Σa : 18,752 sq yd



F4

F4

Main Parking Lot

2,881 sq yd

F5

p: 473.0 ft
a: 424.1 sq yd

Σp 15,423 ft
 Σa 18,752 sq yd

Access Road

1,440 sq yd

F19

F18

F17

F16

F15

F14

F13

F12

F10

sq yd

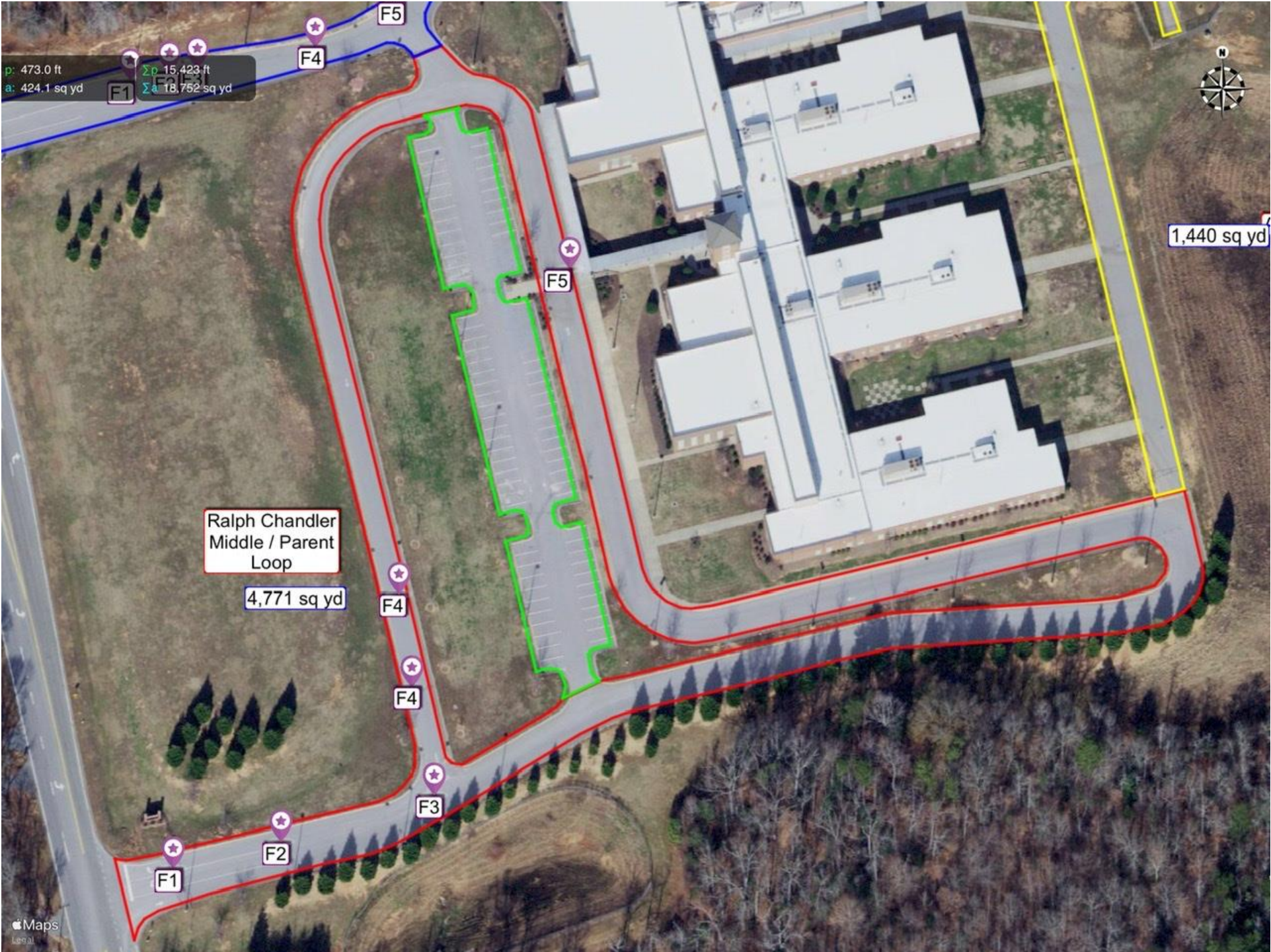
p: 473.0 ft Σp 15,423 ft
a: 424.1 sq yd Σa 18,752 sq yd



Court
2,678 sq yd

Walking Path
339.1 sq yd

- F7
- F8
- F9
- F10
- F11
- F12
- F13
- F14
- F15
- F20



p: 473.0 ft
a: 424.1 sq yd

Section	Perimeter (ft)	Area (sq yd)
F1	15,423	18,752
Σp	15,423	18,752
Σa		18,752

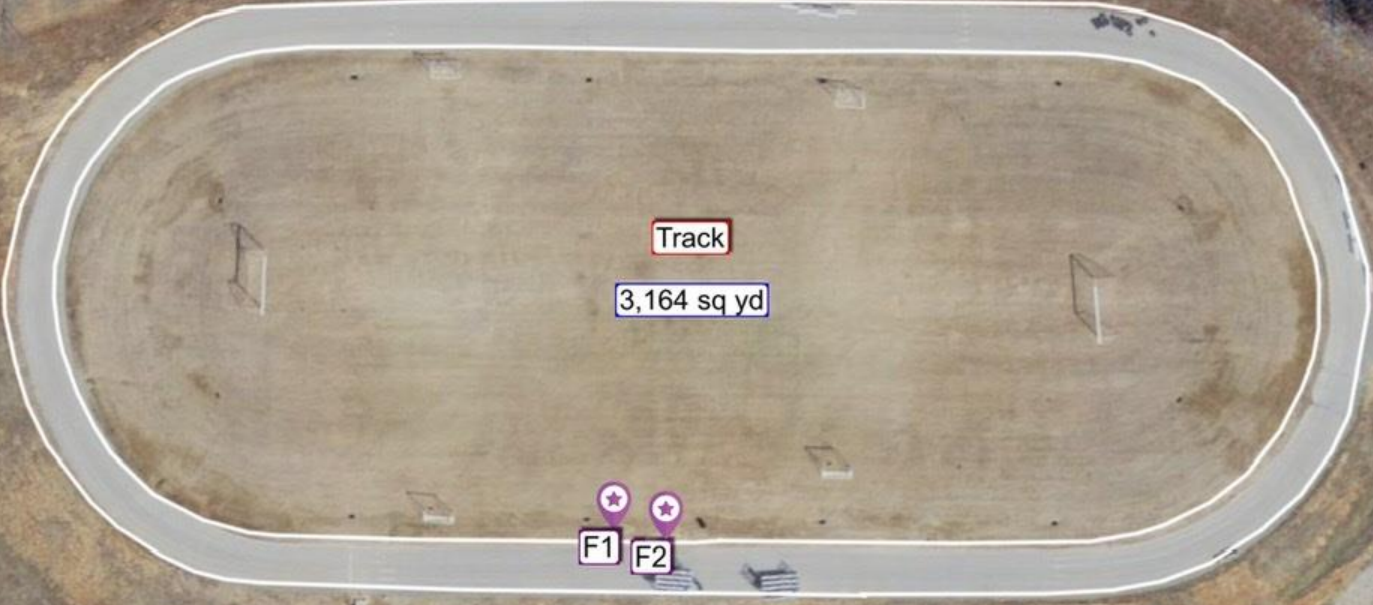
Ralph Chandler
Middle / Parent
Loop

4,771 sq yd

1,440 sq yd

p: 473.0 ft
a: 424.1 sq yd

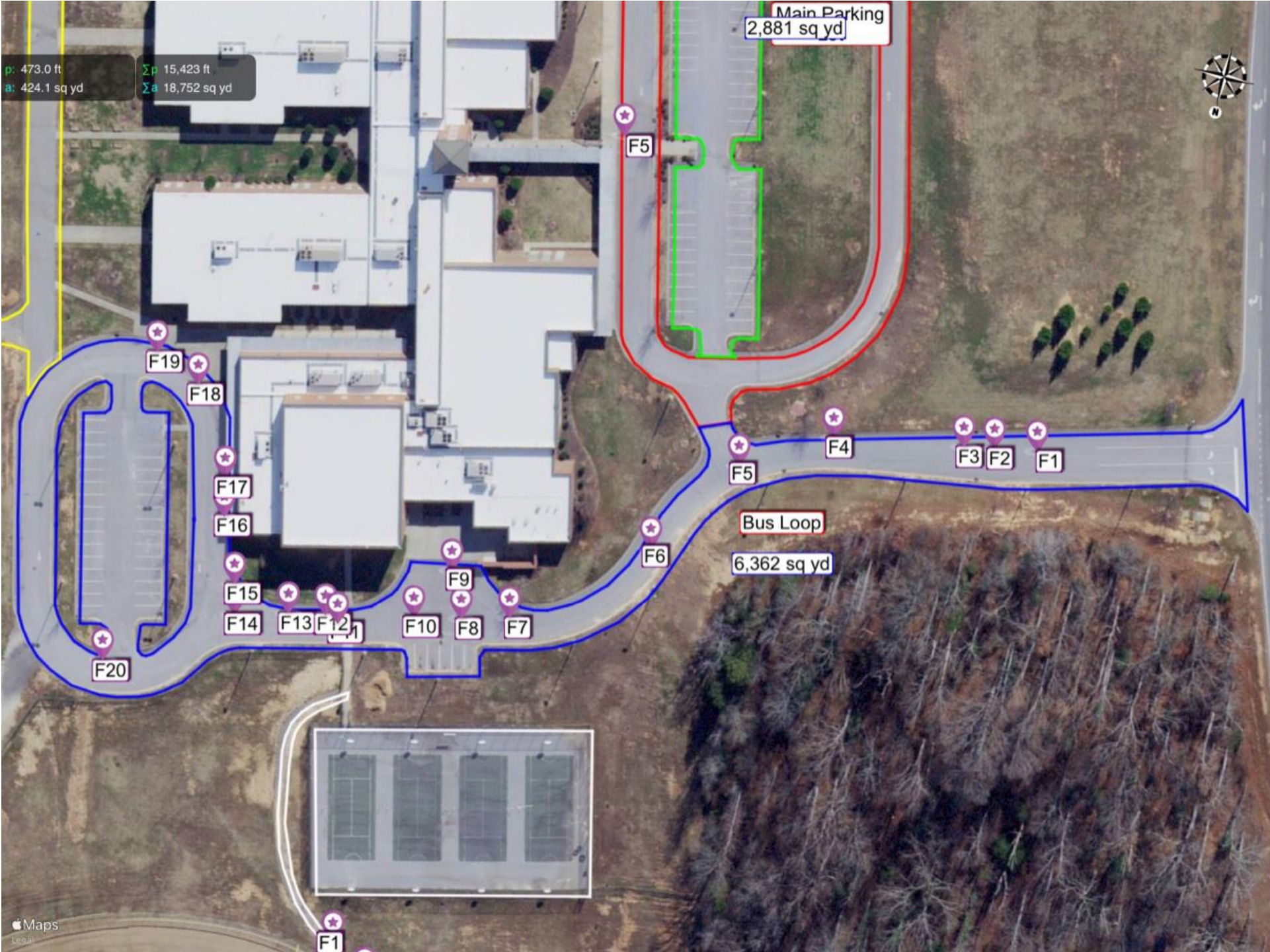
Σp 15,423 ft
 Σa 18,752 sq yd



Track

3,164 sq yd

F1 F2



Sterling School Charles Townes Gifted Center
99 John McCarroll Way
Greenville 29607

p: 284.1 ft
a: 549.35 sq yd

Σp 11,751 ft
 Σa 20,105 sq yd

Walking Path
2,650 sq yd

Court 2
3,202 sq yd

Court 1
549.35 sq yd

Walking Path
603.85 sq yd

Rear Parking Lot
1,952 sq yd

Bus Loop
4,712 sq yd

Sterling School
Charles Townes
Gifted Ctr. /
Parent Loop
6,436 sq yd



p: 284.1 ft
a: 549.35 sq yd
Σp: 11,751 ft
Σa: 20,105 sq yd

Sterling School
Charles Townes
Gifted Ctr. /
Parent Loop

6,436 sq yd

Google

0 50ft

p: 284.1 ft
a: 549.35 sq yd

Σp 11,751 ft
 Σa 20,105 sq yd

Bus Loop

4,712 sq yd

Google

0 50ft



p: 284.1 ft
a: 549.35 sq yd

Σp 11,751 ft
 Σa 20,105 sq yd

Rear Parking Lot

1,952 sq yd

Walking Path

603.86 sq yd

0 20ft



p: 284.1 ft
a: 549.35 sq yd

Σp 11,751 ft
 Σa 20,105 sq yd



Court 1

549.35 sq yd



0 20ft

p: 284.1 ft
a: 549.35 sq yd

Σp 11,751 ft
 Σa 20,105 sq yd



Court 2

3,202 sq yd



Google

0 20ft

p: 405.9 yd
a: 8,997 sq yd

Σp 852.5 yd
 Σa 2,724 sq yd



Track

2,724 sq yd



p: 284.1 ft
a: 549.35 sq yd

Σp 11,751 ft
 Σa 20,105 sq yd



Rear Parking Lot

1,952 sq yd

Walking Path

603.86 sq yd

F1

F2

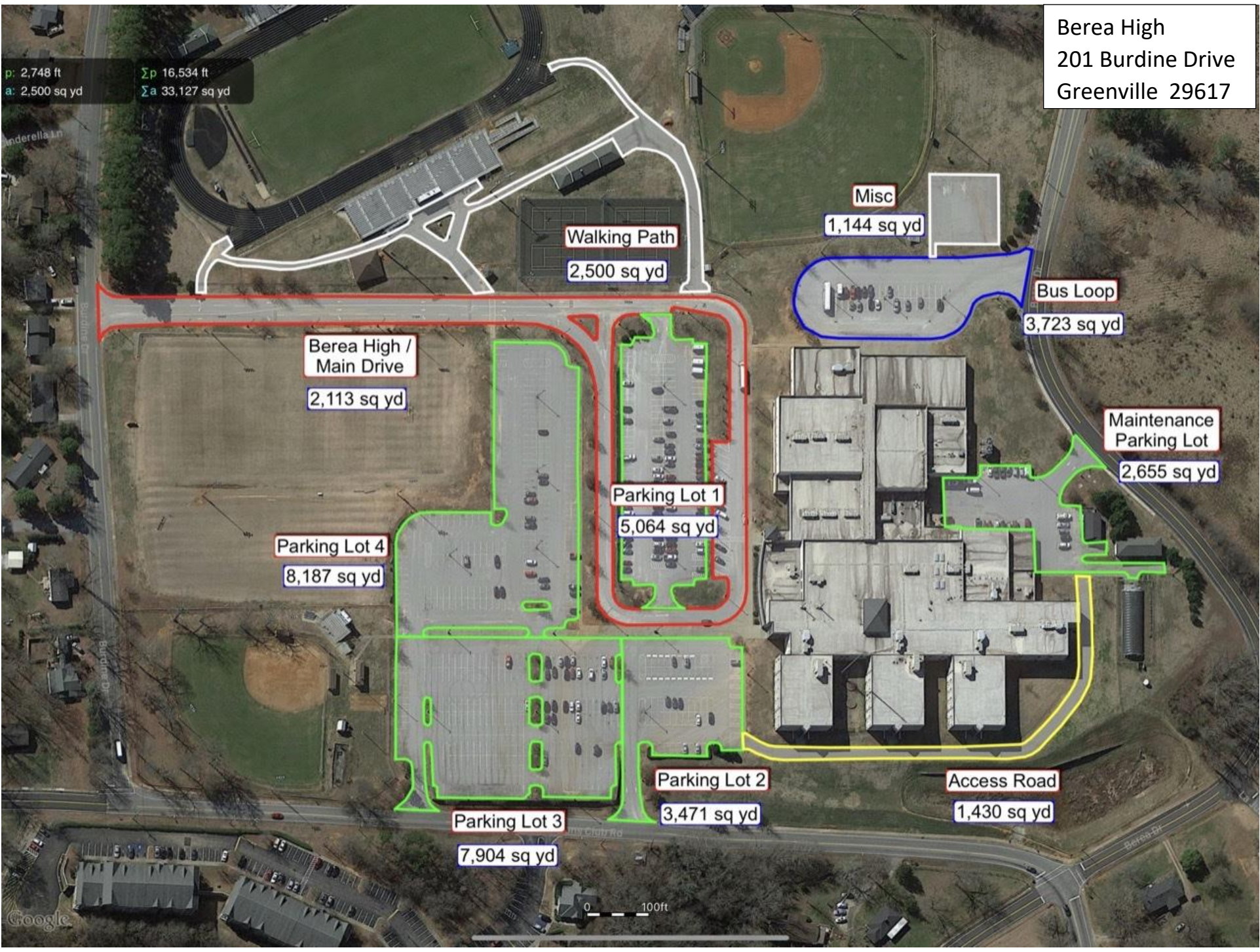
Google

0 50ft



Berea High
201 Burdine Drive
Greenville 29617

p: 2,748 ft
a: 2,500 sq yd
 Σp 16,534 ft
 Σa 33,127 sq yd



Anderella Ln

Southside Dr

Burdine Dr

Clay Rd

Berea Dr

p: 2,748 ft
a: 2,500 sq yd

Σp 16,534 ft
 Σa 33,128 sq yd

Bus Loop

3,723 sq yd

Berea Dr

0 20ft

Google

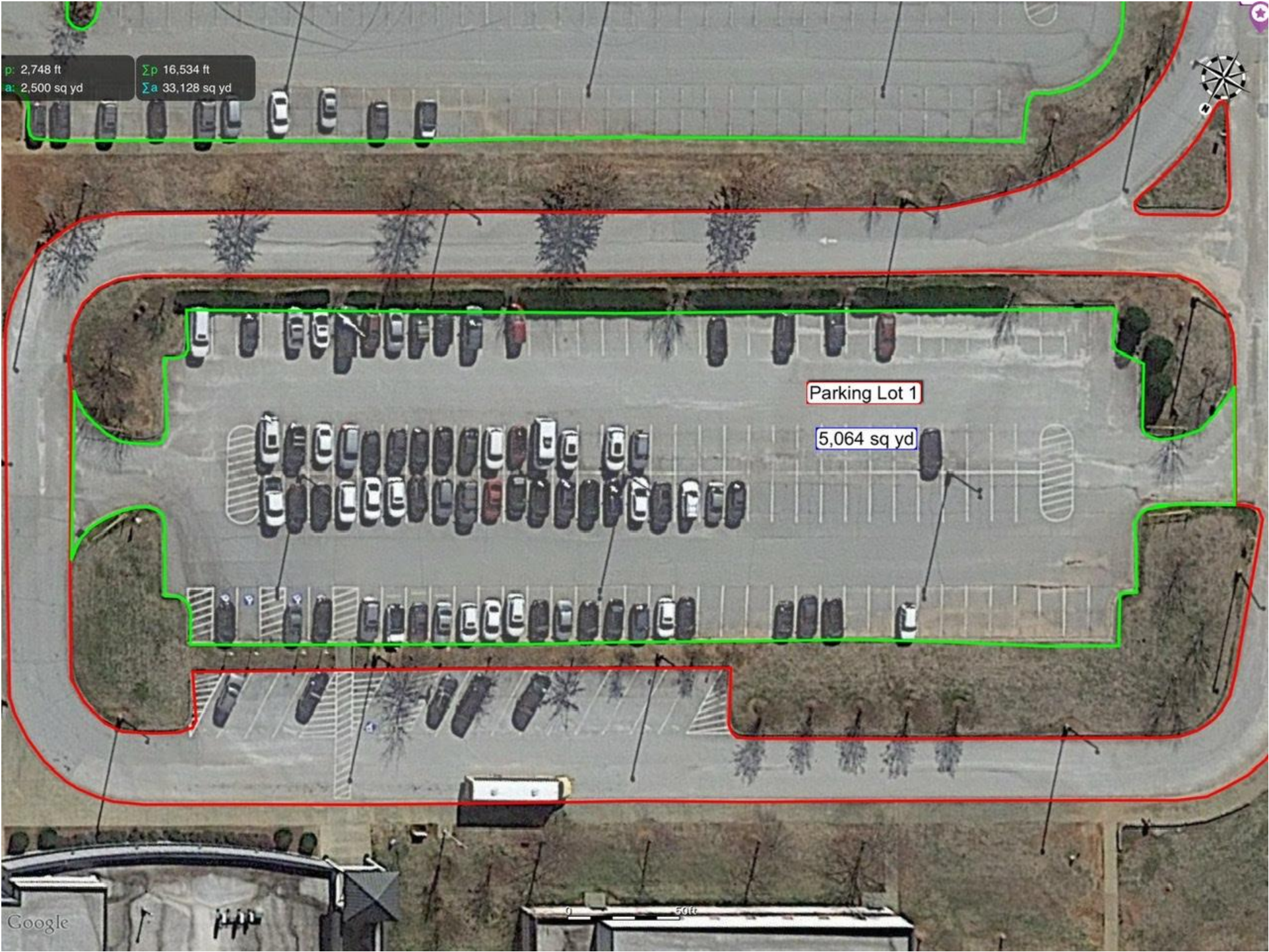


p: 2,748 ft
a: 2,500 sq yd

Σp 16,534 ft
 Σa 33,128 sq yd

Parking Lot 1

5,064 sq yd



p: 2,748 ft
a: 2,500 sq yd

Σp 16,534 ft
 Σa 33,128 sq yd

Lioms Club Rd

Lioms Club Rd

Parking Lot 2

3,472 sq yd

0 50ft

Google



p: 2,748 ft
a: 2,500 sq yd

Σp 16,534 ft
 Σa 33,128 sq yd

Parking Lot 3

7,904 sq yd



Google

0 50ft



p: 2,748 ft
a: 2,500 sq yd

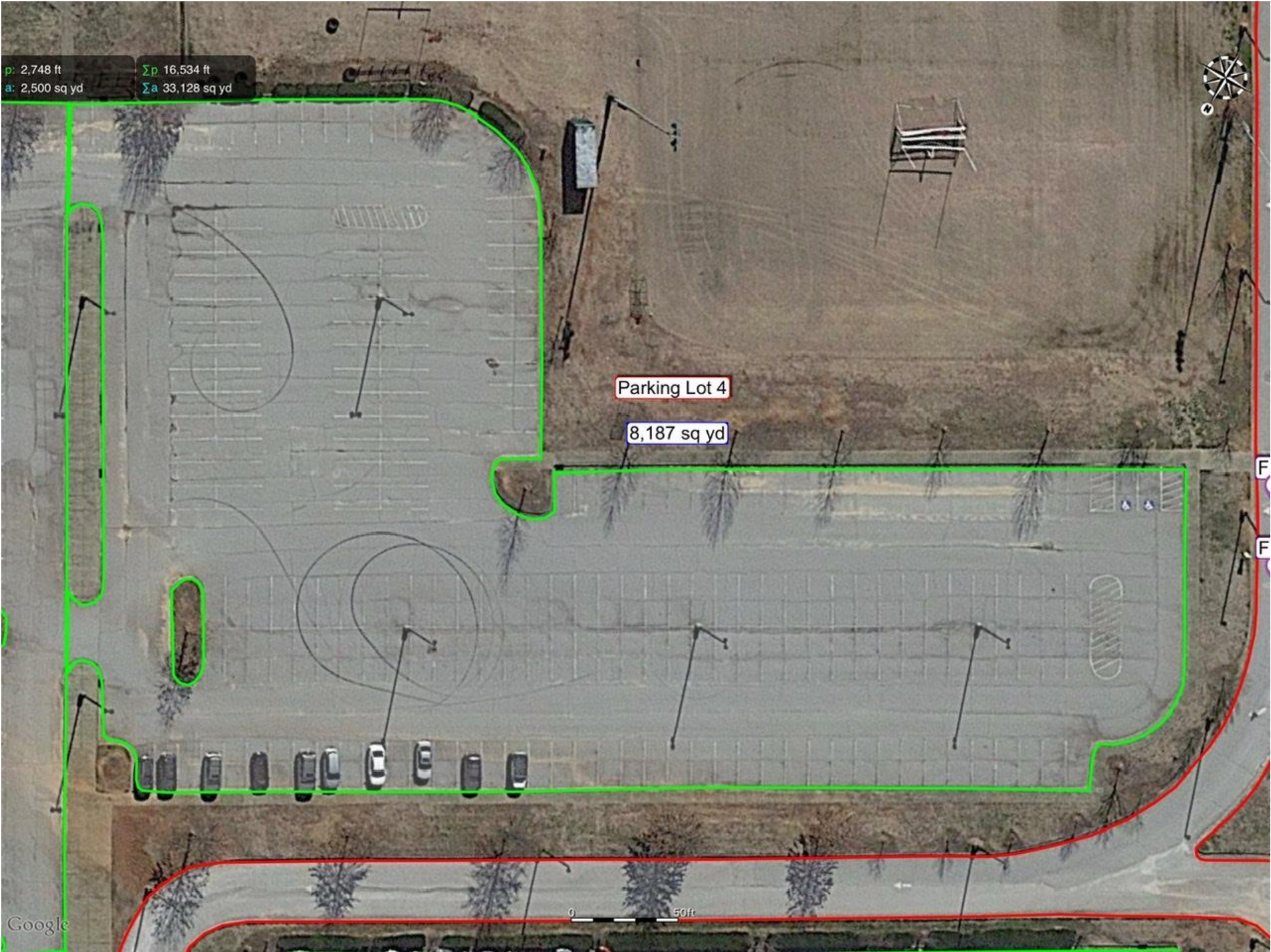
Σp 16,534 ft
 Σa 33,128 sq yd

Parking Lot 4

8,187 sq yd

Google

0 50ft



p: 2,748 ft
a: 2,500 sq yd

Σp 16,534 ft
 Σa 33,128 sq yd

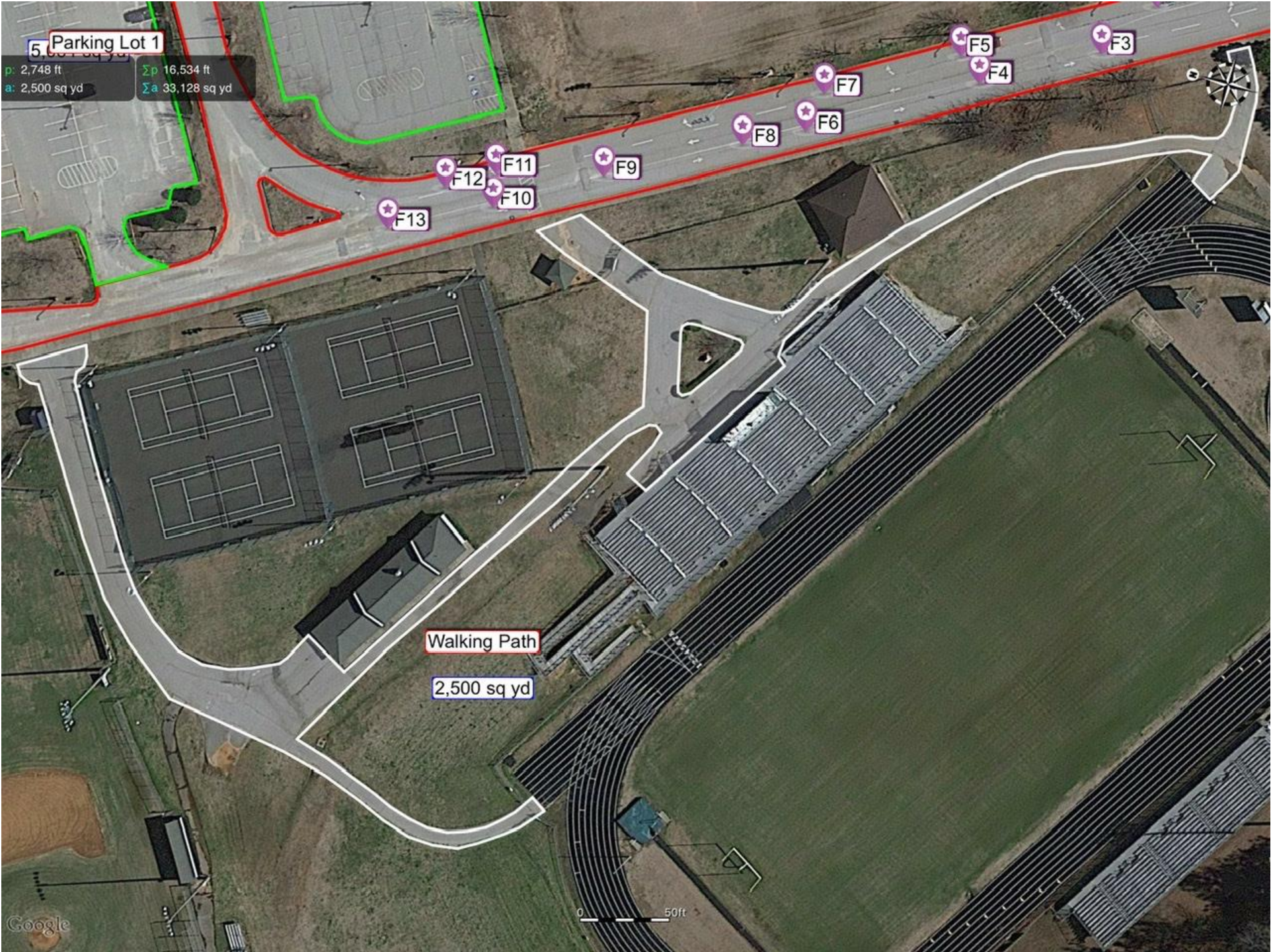
Access Road

1,430 sq yd

0 50ft

Google





5. Parking Lot 1

p: 2,748 ft
a: 2,500 sq yd
 Σp 16,534 ft
 Σa 33,128 sq yd

F13

F12

F11

F10

F9

F8

F6

F7

F5

F4

F3

Walking Path

2,500 sq yd

0 50ft

Google

p: 2,748 ft
a: 2,500 sq yd

Σp : 16,534 ft
 Σa : 33,128 sq yd



0 20ft

Google

p: 2,748 ft
a: 2,500 sq yd

Σp 16,534 ft
 Σa 33,128 sq yd



Berea Dr

Berea Dr

Maintenance
Parking Lot

2,655 sq yd

F1

F2

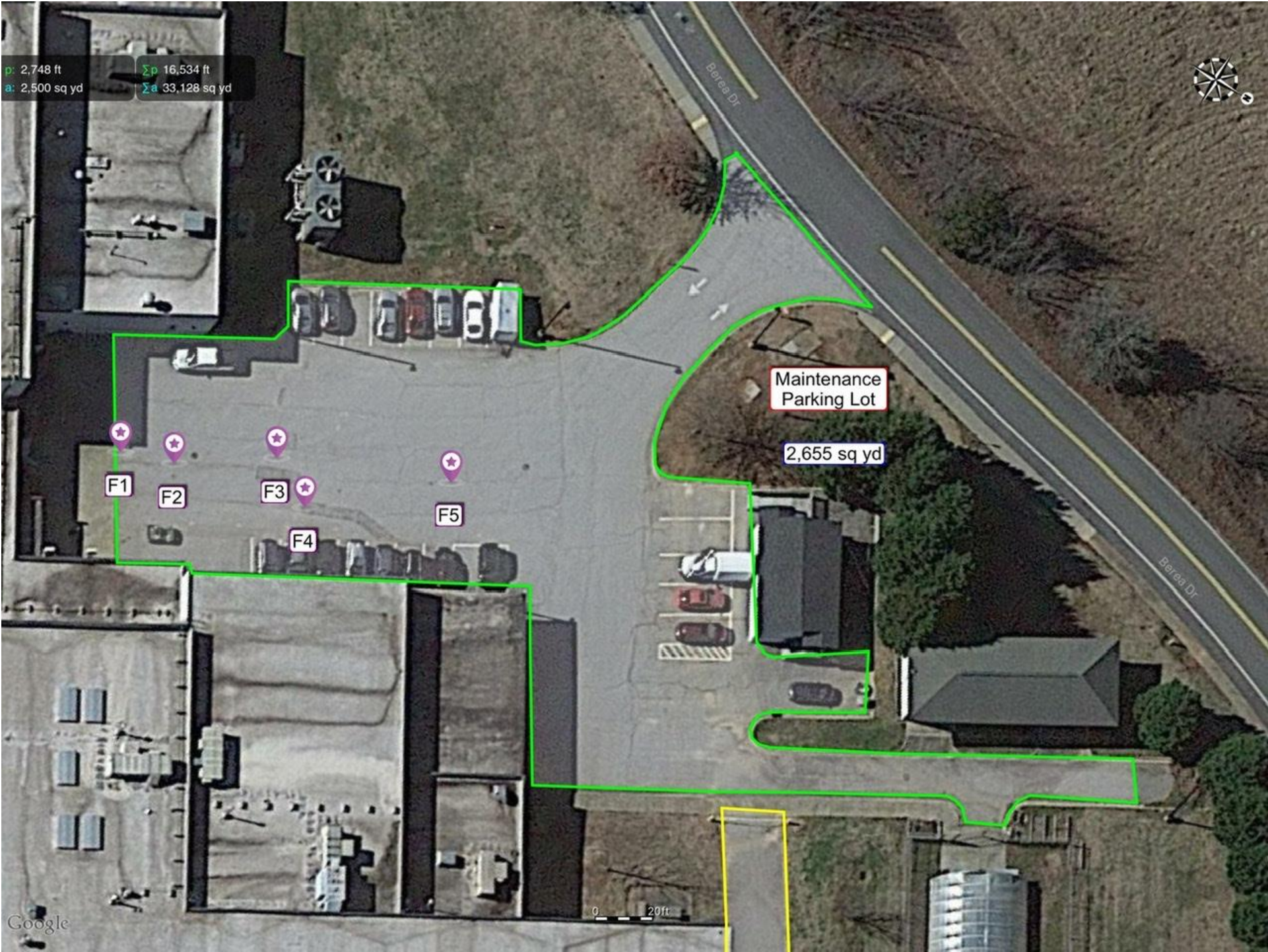
F3

F4

F5

0 20ft

Google



p: 2,748 ft
a: 2,500 sq yd
 Σp 16,534 ft
 Σa 33,128 sq yd

Parking Lot 1
5,064 sq yd

Parking Lot 4
8,187 sq yd

Berea High /
Main Drive
2,113 sq yd

- F13
- F12
- F11
- F10
- F9
- F8
- F6
- F7
- F5
- F4
- F3
- F2
- F1

