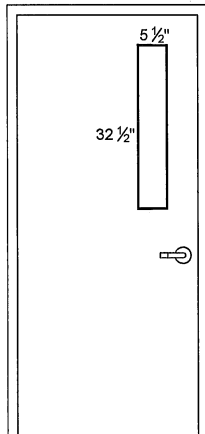
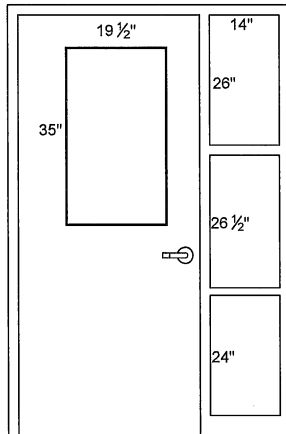


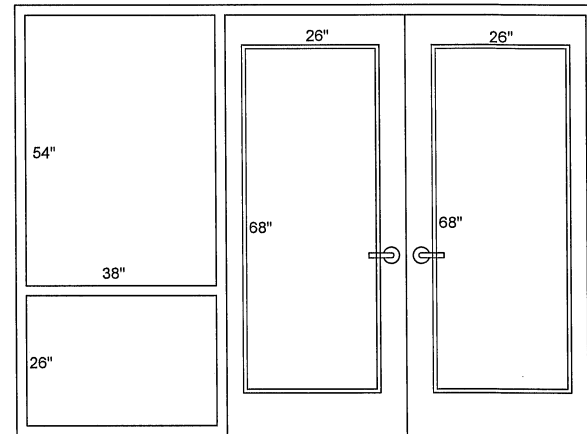
**GCSD Security Glass Project**  
**Phase 1 Schools**  
**March 5, 2024**



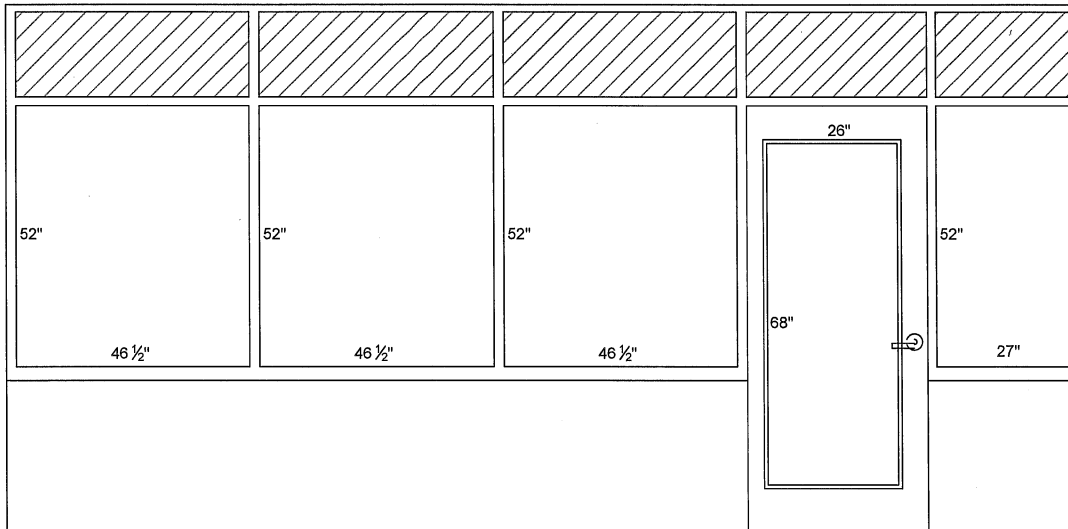
OPENING A - QTY 1  
SC WOOD DOOR - WOOD STOPS  
CLEAR TEMPERED GLASS



OPENING B - QTY 38  
SC WOOD DOOR - METAL STOPS  
HM FRAME - METAL STOPS  
CLEAR TEMPERED GLASS

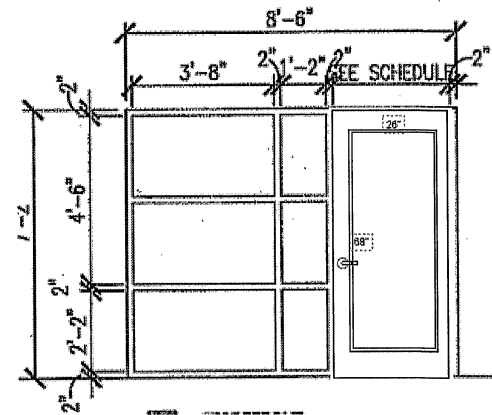


OPENING D - QTY 1  
ALUMINUM DOOR - ALUMINUM STOPS  
ALUMINUM FRAME - ALUMINUM STOPS  
CLEAR TEMPERED GLASS

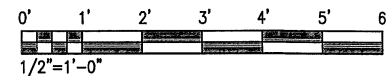


OPENING E - QTY 1  
ALUM STOREFRONT DOOR - ALUM STOPS  
ALUM CURTAIN WALL FRAME  
CLEAR TEMPERED GLASS

NOTE:  
HATCHED AREA INDICATES  
GLASS NOT TO BE REPLACED



OPENING H - QTY 1  
ALUMINUM DOOR - ALUMINUM STOPS  
ALUMINUM FRAME - ALUMINUM STOPS  
CLEAR TEMPERED GLASS



ARD, WOOD,  
HOLCOMBE &  
SLATE, INC.  
ARCHITECTS AND  
PLANNERS  
620 N. MAIN STREET | SUITE 104  
GREENVILLE, SOUTH CAROLINA  
29601  
PHONE: 864-242-5450  
www.ahsarchitects.com

MEMBERS: AMERICAN INSTITUTE OF ARCHITECTS  
NCARB CERTIFICATES: 4059, 22953, 4407 & 4414

OPENING ELEVATIONS

GREENVILLE COUNTY SCHOOL DISTRICT  
**AJ WHITTENBERG ELEMENTARY**  
SCHOOL  
GREENVILLE, SOUTH CAROLINA

DRAWN	KES
JOB	2313-020
DATE	INCOMPLETE



THIS DRAWING IS AN INSTRUMENT OF SERVICE AND REMAINS THE PROPERTY OF ARD, WOOD, HOLCOMBE & SLATE, INC. ARCHITECTS AND PLANNERS. IT MAY NOT BE REPRODUCED IN ANY MANNER WITHOUT WRITTEN PERMISSION.

ARD, WOOD,  
HOLCOMBE &  
SLATE, INC.  
ARCHITECTS AND  
PLANNERS  
620 N. MAIN STREET | SUITE 104  
GREENVILLE, SOUTH CAROLINA  
29601  
PHONE: 864-242-5450  
www.awhsarchitects.com

MEMBERS: AMERICAN INSTITUTE OF ARCHITECTS  
NCARB CERTIFICATE #292, 22953, 4407 & 4414

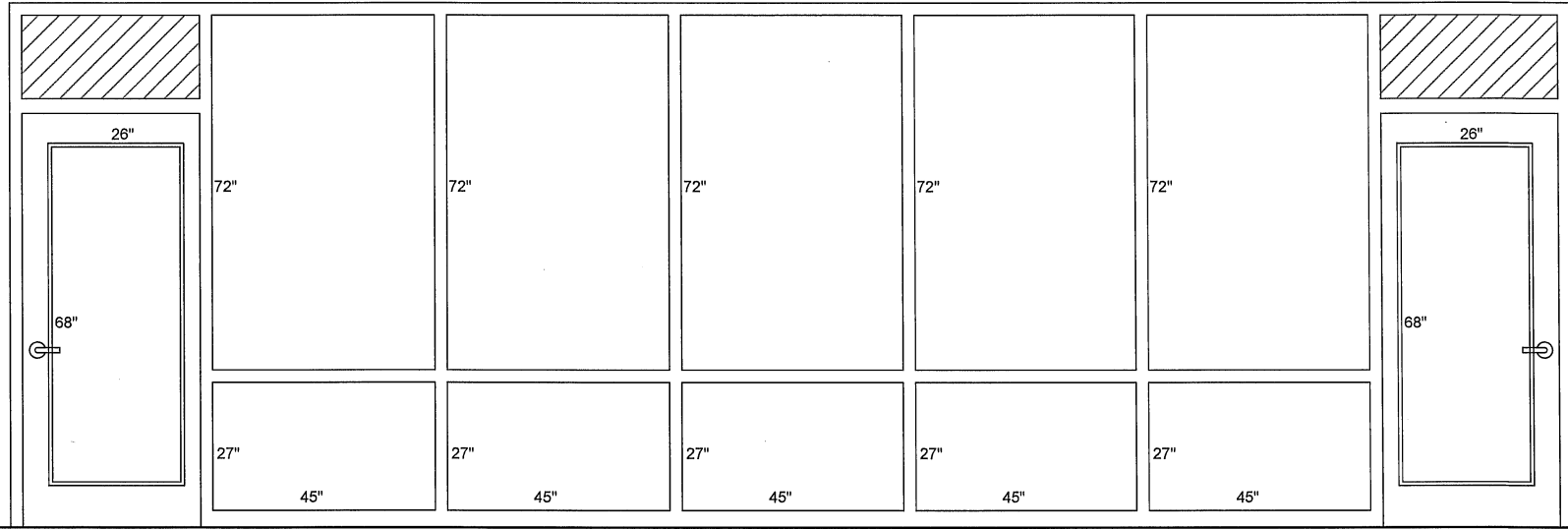
OPENING ELEVATIONS

GREENVILLE COUNTY SCHOOL DISTRICT  
**AJ WHITTENBERG ELEMENTARY**  
SCHOOL  
GREENVILLE, SOUTH CAROLINA

DRAWN	KES
JOB	2313-020
DATE	INCOMPETE
DRAWING	A2
NUMBER	

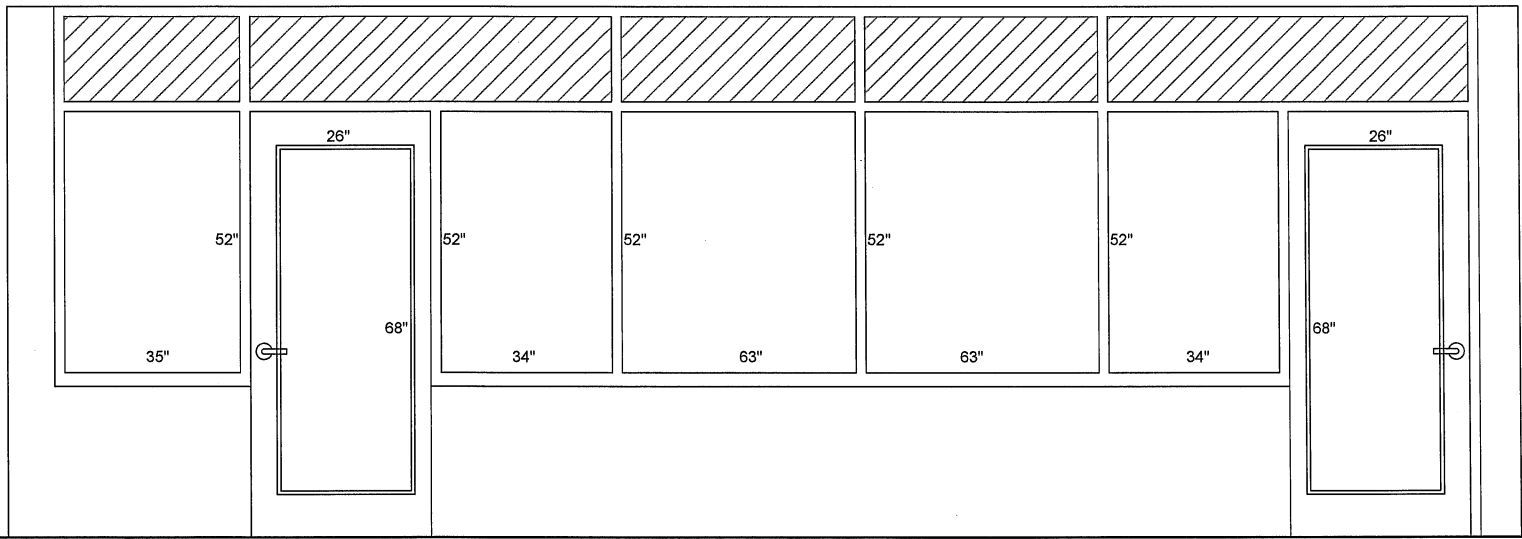


THIS DRAWING IS AN INSTRUMENT OF SERVICE AND REMAINS THE PROPERTY OF ARD, WOOD, HOLCOMBE & SLATE, INC. ARCHITECTS AND PLANNERS. IT MAY NOT BE REPRODUCED IN ANY MANNER WITHOUT WRITTEN PERMISSION.

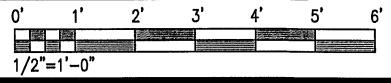


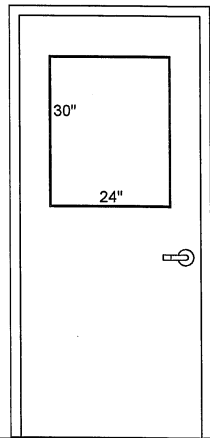
OPENING F - QTY 1  
ALUMINUM STOREFRONT DOORS - ALUMINUM STOPS  
ALUMINUM CURTAIN WALL SYSTEM  
CLEAR TEMPERED GLASS

NOTE:  
HATCHED AREA INDICATES GLASS NOT TO BE REPLACED

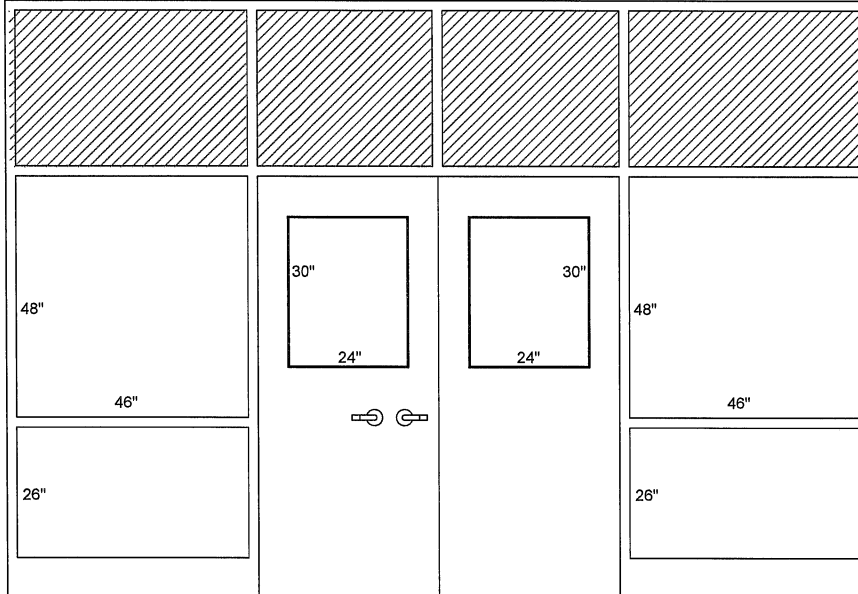


OPENING G - QTY 1  
ALUMINUM STOREFRONT DOORS - ALUMINUM STOPS  
ALUMINUM CURTAIN WALL SYSTEM  
CLEAR TEMPERED GLASS





OPENING C - QTY 1  
SC WOOD DOOR - WOOD STOPS  
CLEAR TEMPERED GLASS  
(INCLUDES 1 PAIR)



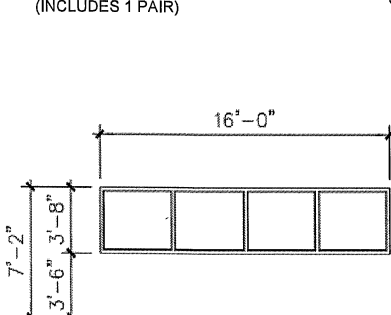
OPENING E - QTY 1  
SC WOOD DOOR - WOOD STOPS  
CLEAR TEMPERED GLASS

NOTE:  
HATCHED AREA  
INDICATES GLASS NOT  
TO BE REPLACED

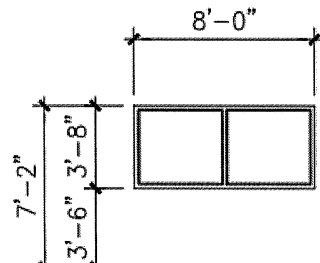
ARD, WOOD,  
HOLCOMBE &  
SLATE, INC.  
ARCHITECTS AND  
PLANNERS  
420 N. MAIN STREET | SUITE 104  
GREENVILLE, SOUTH CAROLINA  
29601  
PHONE: 864-242-5450  
www.awhsarchitects.com

MEMBERS: AMERICAN INSTITUTE OF ARCHITECTS  
NCARB CERTIFICATES 4259, 22953, 44627 & 44714

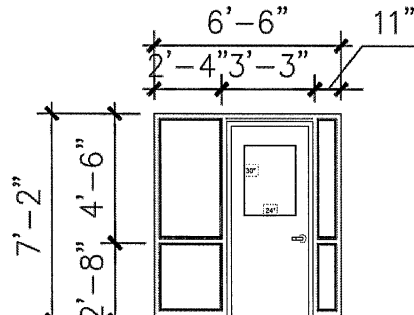
OPENING ELEVATIONS  
GREENVILLE COUNTY SCHOOL DISTRICT  
**BEREA HIGH SCHOOL**  
BEREA, SOUTH CAROLINA



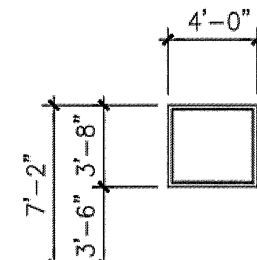
OPENING G - QTY 2  
HM FRAME  
CLEAR TEMPERED GLASS



OPENING H - QTY 2  
HM FRAME  
CLEAR TEMPERED GLASS



OPENING J - QTY 1  
HM FRAME  
CLEAR TEMPERED GLASS



OPENING K - QTY 4  
HM FRAME  
CLEAR TEMPERED GLASS



DRAWN	KES
JOB	2313-020
DATE	INCOMPLETE

DRAWING	A1
	NUMBER

**AWHS**  
ARCHITECTS

THIS DRAWING IS AN INSTRUMENT OF SERVICE AND REMAINS THE PROPERTY OF ARD, WOOD, HOLCOMBE & SLATE, INC. ARCHITECTS AND PLANNERS. IT MAY NOT BE REPRODUCED IN ANY MANNER WITHOUT WRITTEN PERMISSION.

**ARD, WOOD,  
HOLCOMBE &  
SLATE, INC.**  
ARCHITECTS AND  
PLANNERS  
420 N. MAIN STREET | SUITE 104  
GREENVILLE, SOUTH CAROLINA  
29601  
PHONE: 864-242-5450  
www.awhsarchitects.com

MEMBER: AMERICAN INSTITUTE OF ARCHITECTS  
NCARB CERTIFICATES 4259, 2293, 4427 & 44714

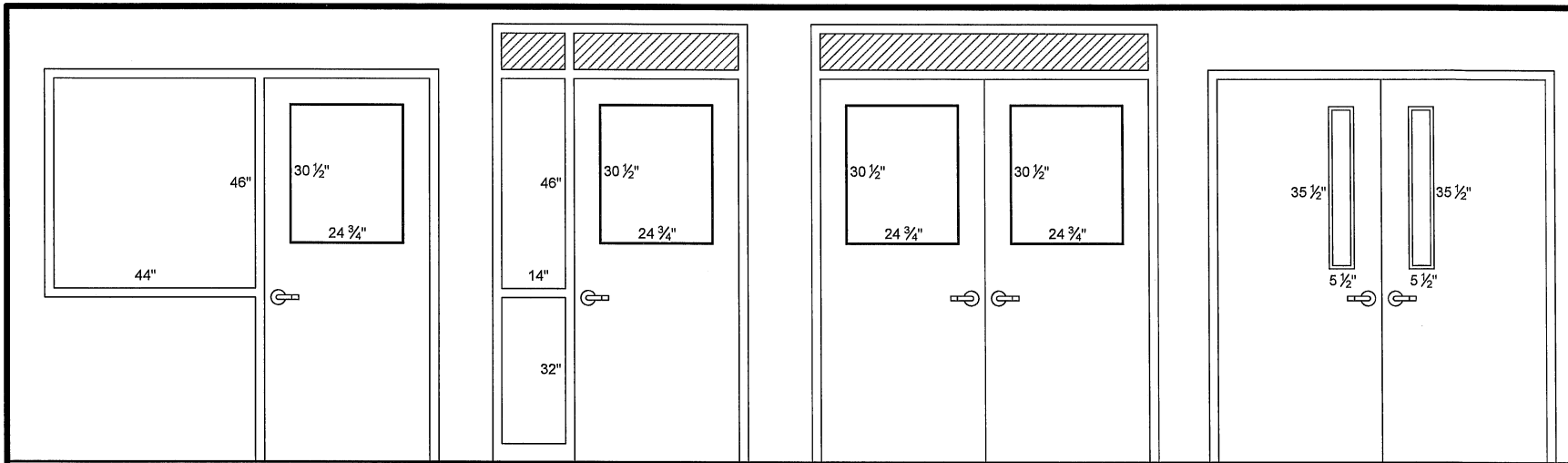
OPENING ELEVATIONS  
GREENVILLE COUNTY SCHOOL DISTRICT  
**CAROLINA HIGH  
SCHOOL**  
GREENVILLE, SOUTH CAROLINA

DRAWN	KES
JOB	2313-020
DATE	INCOMPLETE

DRAWING  
**A1**  
NUMBER

**AWHS**  
ARCHITECTS

THIS DRAWING IS AN INSTRUMENT OF SERVICE AND REMAINS THE PROPERTY OF ARD, WOOD, HOLCOMBE & SLATE, INC. ARCHITECTS AND PLANNERS. IT MAY NOT BE REPRODUCED IN ANY MANNER WITHOUT WRITTEN PERMISSION.

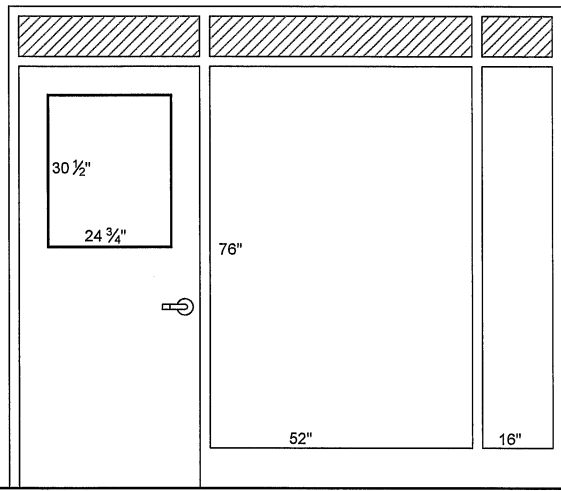


OPENING A - QTY 1  
SC WOOD DOOR - WOOD STOPS  
HM FRAME - METAL STOPS  
CLEAR TEMPERED GLASS

OPENING B - QTY 1  
SC WOOD DOOR - WOOD STOPS  
HM FRAME - METAL STOPS  
CLEAR TEMPERED GLASS

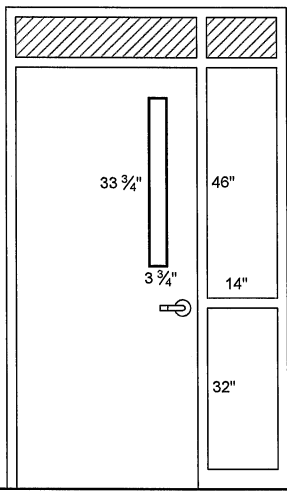
OPENING C - QTY 1  
SC WOOD DOOR - WOOD STOPS  
HM FRAME - METAL STOPS  
CLEAR TEMPERED GLASS

OPENING D - QTY 1  
HM DOOR - METAL STOPS  
CLEAR TEMPERED GLASS

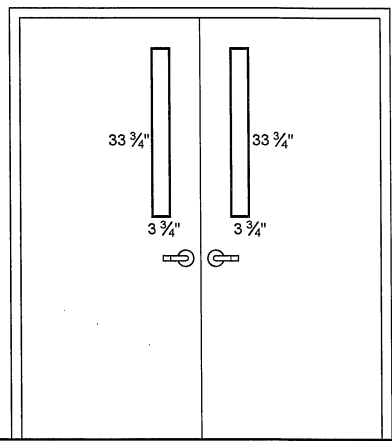


OPENING E - QTY 1  
SC WOOD DOOR - WOOD STOPS  
HM FRAME - METAL STOPS  
CLEAR TEMPERED GLASS

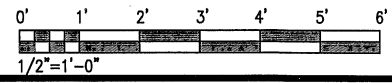
NOTE:  
HATCHED AREAS INDICATE  
GLASS NOT TO BE REPLACED



OPENING F - QTY 70  
SC WOOD DOOR - WOOD STOPS  
HM FRAME - METAL STOPS  
CLEAR TEMPERED GLASS



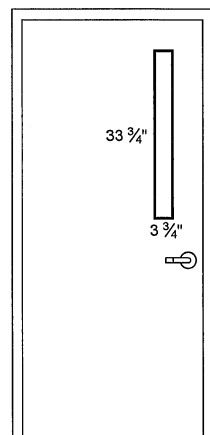
OPENING H - QTY 8  
SC WOOD DOOR - WOOD STOPS  
CLEAR TEMPERED GLASS



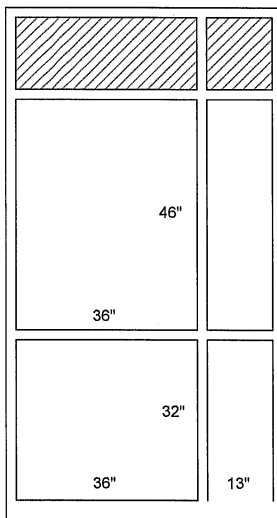
ARD, WOOD,  
HOLCOMBE &  
SLATE, INC.  
ARCHITECTS AND  
PLANNERS  
620 N. MAIN STREET | SUITE 104  
GREENVILLE, SOUTH CAROLINA  
29601  
PHONE: 864-242-5450  
www.awhsarchitects.com

MEMBER: AMERICAN INSTITUTE OF ARCHITECTS  
NCARB CERTIFICATES 4259, 22953, 44027 & 44714

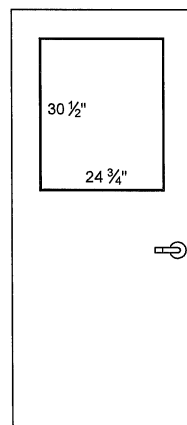
OPENING ELEVATIONS  
GREENVILLE COUNTY SCHOOL DISTRICT  
**CAROLINA HIGH SCHOOL**  
GREENVILLE, SOUTH CAROLINA



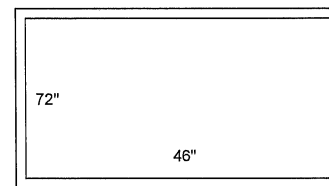
OPENING J - QTY 4  
SC WOOD DOOR - WOOD STOPS  
HM FRAME - METAL STOPS  
CLEAR TEMPERED GLASS



OPENING M - QTY 2  
HM FRAME  
CLEAR TEMPERED GLASS

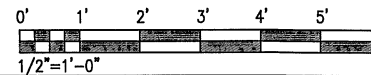


OPENING N - QTY 1  
SC WOOD DOOR - WOOD STOPS  
HM FRAME - METAL STOPS  
CLEAR TEMPERED GLASS



OPENING P - QTY 1  
HM FRAME  
CLEAR TEMPERED GLASS

NOTE:  
HATCHED AREAS INDICATE  
GLASS NOT TO BE REPLACED

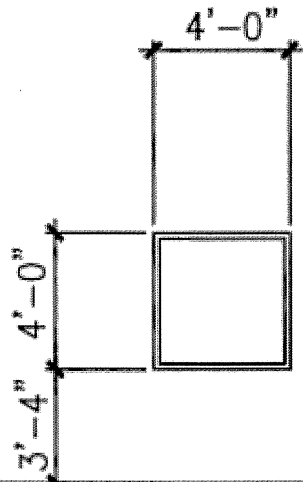


DRAWN	KES
JOB	2313-020
DATE	INCOMPLETE

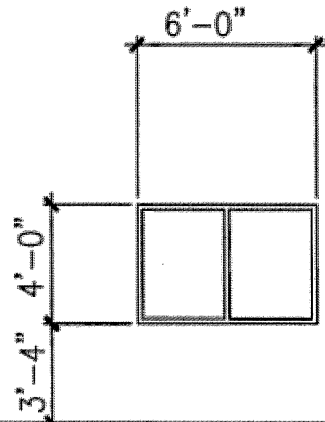
DRAWING	A2
NUMBER	

**AWHS**  
ARCHITECTS

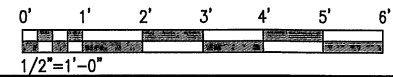
THIS DRAWING IS AN INSTRUMENT OF SERVICE AND REMAINS THE PROPERTY OF ARD, WOOD, HOLCOMBE & SLATE, INC. ARCHITECTS AND PLANNERS. IT MAY NOT BE REPRODUCED IN ANY MANNER WITHOUT WRITTEN PERMISSION.



OPENING E - QTY 1  
HM FRAME  
CLEAR TEMPERED GLASS



OPENING E - QTY 1  
HM FRAME  
CLEAR TEMPERED GLASS



ARD, WOOD,  
HOLCOMBE &  
SLATE, INC.  
ARCHITECTS AND  
PLANNERS  
620 N. MAIN STREET | SUITE 104  
GREENVILLE, SOUTH CAROLINA  
29601  
PHONE: 864-242-5450  
WWW.QWHSARCHITECTS.COM

MEMBERS: AMERICAN INSTITUTE OF ARCHITECTS  
NCARB CERTIFICATES #291, 2275, 44927 & 44114

OPENING ELEVATIONS  
GREENVILLE COUNTY SCHOOL DISTRICT  
**EASTSIDE HIGH  
SCHOOL**  
TAYLORS, SOUTH CAROLINA

DRAWN	KES
JOB	2313-020
DATE	INCOMPLETE

DRAWING  
**A1**  
NUMBER

**AWHS**  
ARCHITECTS

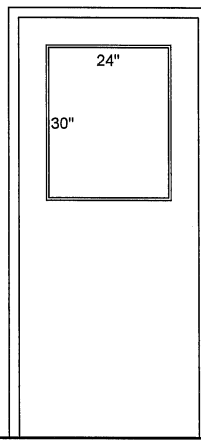
THIS DRAWING IS AN INSTRUMENT OF SERVICE AND REMAINS THE PROPERTY OF ARD, WOOD, HOLCOMBE & SLATE, INC. ARCHITECTS AND PLANNERS. IT MAY NOT BE REPRODUCED IN ANY MANNER WITHOUT WRITTEN PERMISSION.

ARD, WOOD,  
HOLCOMBE &  
SLATE, INC.  
ARCHITECTS AND  
PLANNERS  
620 N. MAIN STREET | SUITE 104  
GREENVILLE, SOUTH CAROLINA  
29601  
PHONE: 864-242-5450  
www.awhsarchitects.com

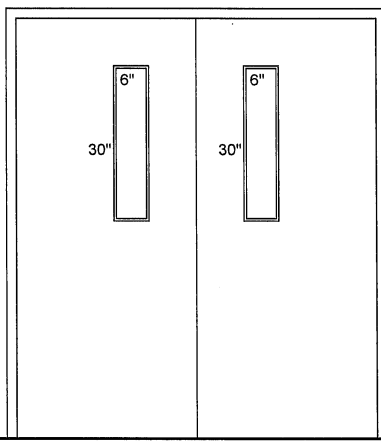
MEMBERS: AMERICAN INSTITUTE OF ARCHITECTS  
NCARB CERTIFICATE: 4297, 2293, 44927 & 4074

OPENING ELEVATIONS

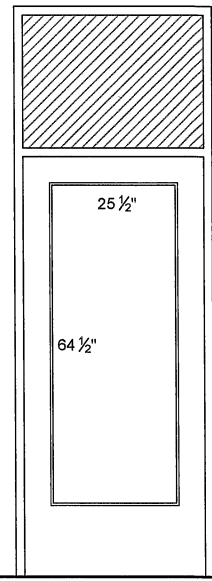
GREENVILLE COUNTY SCHOOL DISTRICT  
**DR. PHINNIZE J. FISHER  
MIDDLE SCHOOL**  
GREENVILLE, SOUTH CAROLINA



OPENING B - QTY 11  
SC WOOD DOOR - WOOD STOPS  
CLEAR TEMPERED GLASS




OPENING C - QTY 5  
SC WOOD DOOR - WOOD STOPS  
CLEAR TEMPERED GLASS



OPENING D - QTY 9  
ALUMINUM DOOR - ALUMINUM STOPS  
CLEAR TEMPERED GLASS

HATCHED AREA INDICATES GLASS NOT  
TO BE REPLACED



DRAWN	EMB
JOB	2313-020
DATE	INCOMPLETE
DRAWING	
	A1
	NUMBER

**AWHS**  
ARCHITECTS

THIS DRAWING IS AN INSTRUMENT OF SERVICE AND REMAINS THE PROPERTY OF ARD, WOOD, HOLCOMBE & SLATE, INC. ARCHITECTS AND PLANNERS. IT MAY NOT BE REPRODUCED IN ANY MANNER WITHOUT WRITTEN PERMISSION.

ARD, WOOD,  
HOLCOMBE &  
SLATE, INC.  
ARCHITECTS AND  
PLANNERS  
620 N. MAIN STREET | SUITE 104  
GREENVILLE, SOUTH CAROLINA  
29601  
PHONE: 864-242-5450  
www.qwhsarchitects.com

MEMBERS: AMERICAN INSTITUTE OF ARCHITECTS  
NCARB CERTIFICATE #29, 2925, #4627 & #4714

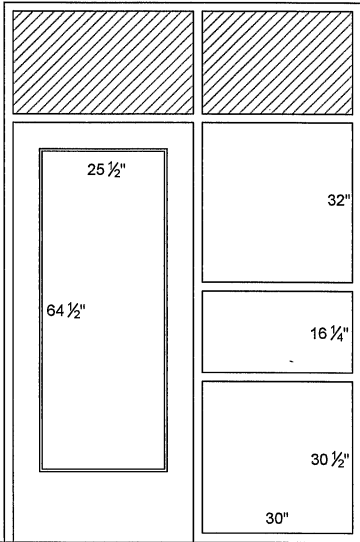
OPENING ELEVATIONS

GREENVILLE COUNTY SCHOOL DISTRICT  
**DR. PHINNIZE J. FISHER**  
**MIDDLE SCHOOL**  
GREENVILLE, SOUTH CAROLINA

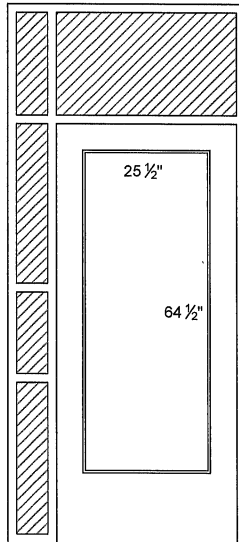
DRAWN	EMB
JOB	2313-020
DATE	INCOMPLETE



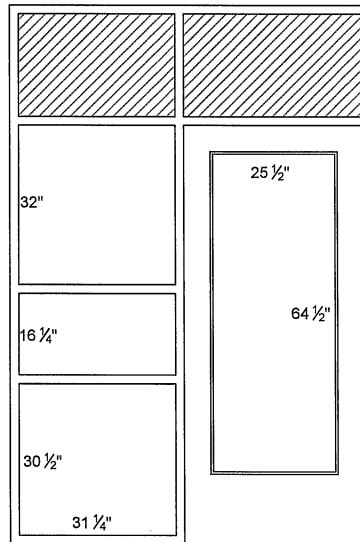
THIS DRAWING IS AN INSTRUMENT OF SERVICE AND REMAINS THE PROPERTY OF ARD, WOOD, HOLCOMBE & SLATE, INC. ARCHITECTS AND PLANNERS. IT MAY NOT BE REPRODUCED IN ANY MANNER WITHOUT WRITTEN PERMISSION.



OPENING E - QTY 27  
ALUMINUM DOOR - ALUMINUM STOPS  
CLEAR TEMPERED GLASS  
ALUMINUM STOREFRONT FRAME

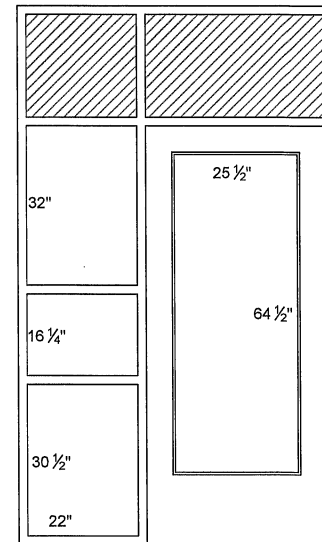


OPENING F - QTY 6  
ALUMINUM DOOR - ALUMINUM STOPS  
CLEAR TEMPERED GLASS  
ALUMINUM STOREFRONT FRAME

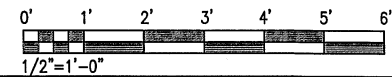


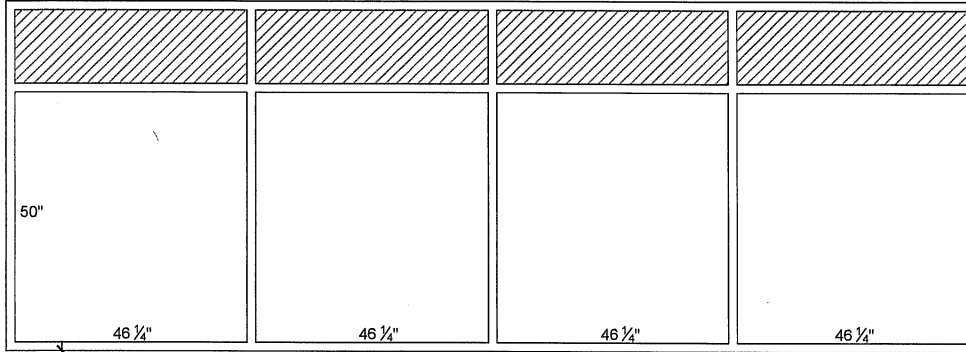
OPENING G - QTY 3  
ALUMINUM DOOR - ALUMINUM STOPS  
CLEAR TEMPERED GLASS  
ALUMINUM STOREFRONT FRAME

HATCHED AREHEDISREINFORCEDGLASS NOT  
TO BE REPLACED



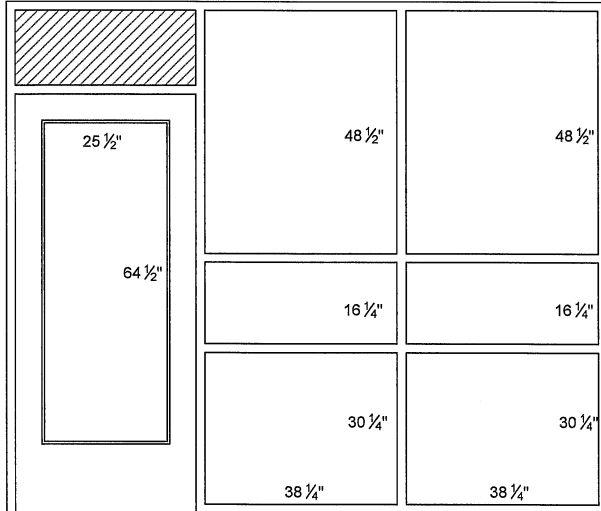
OPENING H - QTY 3  
ALUMINUM DOOR - ALUMINUM STOPS  
CLEAR TEMPERED GLASS  
ALUMINUM STOREFRONT FRAME





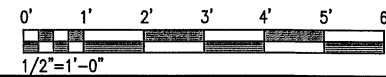
OPENING J - QTY 2  
ALUM STOREFRONT FRAME  
CLEAR TEMPERED GLASS

HATCHED AREA INDICATES GLASS NOT  
TO BE REPLACED



OPENING K - QTY 2  
ALUM STOREFRONT DOOR - ALUMINUM STOPS  
CLEAR TEMPERED GLASS  
ALUMINUM STOREFRONT FRAME

HATCHED AREA INDICATES GLASS NOT  
TO BE REPLACED



ARD, WOOD,  
HOLCOMBE &  
SLATE, INC.  
ARCHITECTS AND  
PLANNERS  
420 N. MAIN STREET | SUITE 104  
GREENVILLE, SOUTH CAROLINA  
29601  
PHONE: 864-242-5450  
www.awhsarchitects.com

MEMBERS: AMERICAN INSTITUTE OF ARCHITECTS  
AIA/CES CERTIFICATE# 4259, 22953, 4462 & 44714

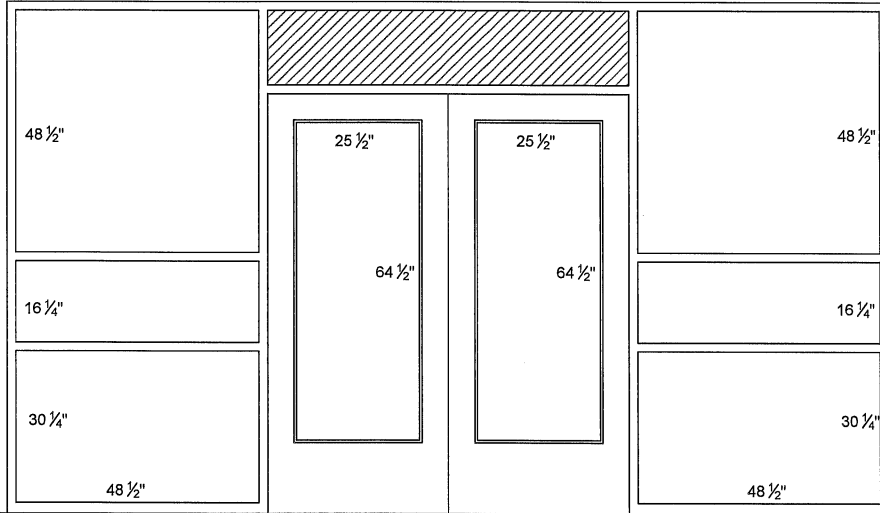
OPENING ELEVATIONS

GREENVILLE COUNTY SCHOOL DISTRICT  
**DR. PHINNIZE J. FISHER**  
MIDDLE SCHOOL  
GREENVILLE, SOUTH CAROLINA

DRAWN	EMB
JOB	2313-020
DATE	INCOMPLETE
DRAWING	
<b>A3</b>	
NUMBER	

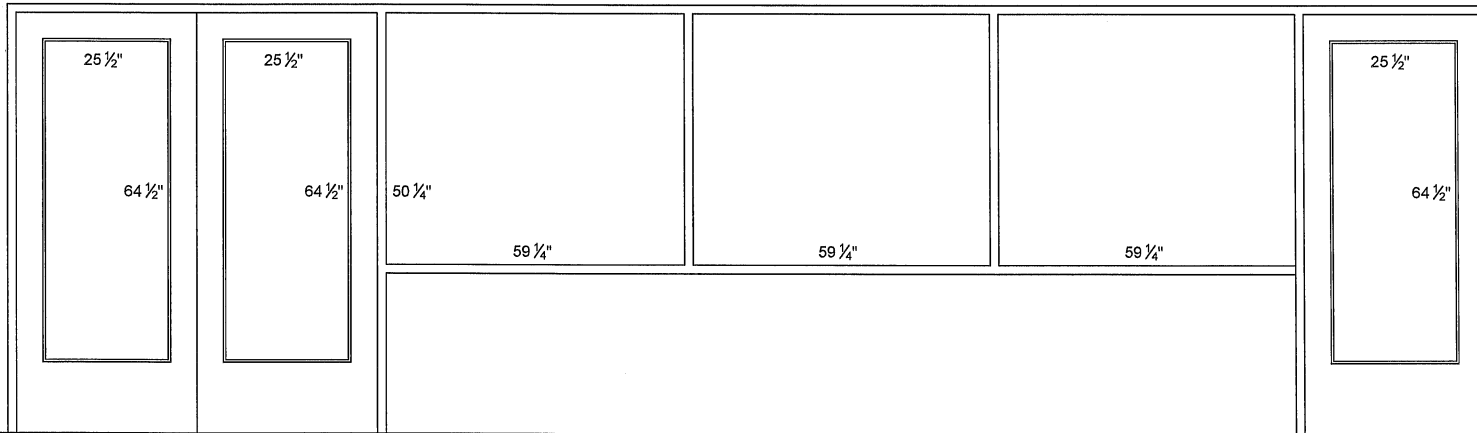
**AWHS**  
ARCHITECTS

THIS DRAWING IS AN INSTRUMENT OF SERVICE AND REMAINS THE PROPERTY OF ARD, WOOD, HOLCOMBE & SLATE, INC. ARCHITECTS AND PLANNERS. IT MAY NOT BE REPRODUCED IN ANY MANNER WITHOUT WRITTEN PERMISSION.

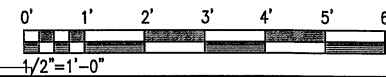


OPENING L - QTY 1  
 ALUM STOREFRONT DOOR - ALUMINUM STOPS  
 CLEAR TEMPERED GLASS  
 ALUMINUM STOREFRONT FRAME

HATCHED AREA INDICATES GLASS NOT  
 TO BE REPLACED



OPENING M - QTY 1  
 ALUM STOREFRONT DOOR - ALUMINUM STOPS  
 CLEAR TEMPERED GLASS  
 ALUMINUM STOREFRONT FRAME



**ARD, WOOD,  
 HOLCOMBE &  
 SLATE, INC.**  
 ARCHITECTS AND  
 PLANNERS  
 620 N. MAIN STREET | SUITE 104  
 GREENVILLE, SOUTH CAROLINA  
 29601  
 PHONE: 864-242-5450  
 www.qwhsarchitects.com

MEMBERS: AMERICAN INSTITUTE OF ARCHITECTS  
 NCARB CERTIFICATE 429, 2253, 4427 & 4474

OPENING ELEVATIONS

GREENVILLE COUNTY SCHOOL DISTRICT  
**DR. PHINNIZE J. FISHER**  
**MIDDLE SCHOOL**  
 GREENVILLE, SOUTH CAROLINA

DRAWN	EMB
JOB	2313-020
DATE	INCOMPLETE



THIS DRAWING IS AN INSTRUMENT OF SERVICE AND REMAINS THE PROPERTY OF ARD, WOOD, HOLCOMBE & SLATE, INC. ARCHITECTS AND PLANNERS. IT MAY NOT BE REPRODUCED IN ANY MANNER WITHOUT WRITTEN PERMISSION.

ARD, WOOD,  
HOLCOMBE &  
SLATE, INC.  
ARCHITECTS AND  
PLANNERS  
620 N. MAIN STREET | SUITE 104  
GREENVILLE, SOUTH CAROLINA  
29601  
PHONE: 864-242-5450  
WWW.GWHSONARCHITECTS.COM

MEMBERS: AMERICAN INSTITUTE OF ARCHITECTS  
NCARB CERTIFICATE 4289, 22035, 4407 & 44714

OPENING ELEVATIONS

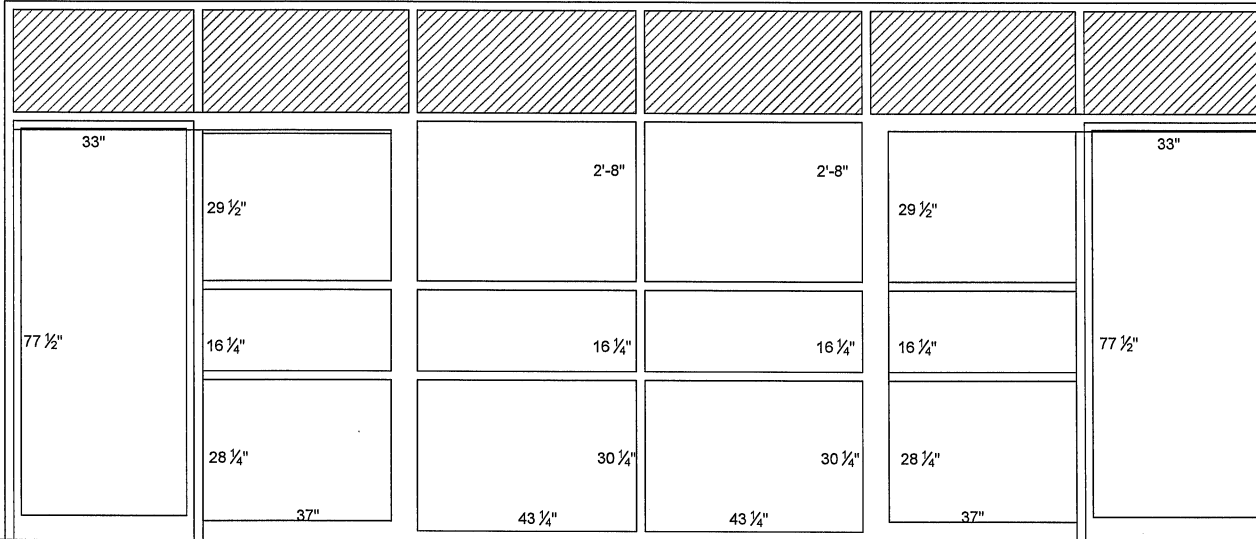
GREENVILLE COUNTY SCHOOL DISTRICT  
**DR. PHINNIZE J. FISHER**  
**MIDDLE SCHOOL**  
GREENVILLE, SOUTH CAROLINA

DRAWN	EMB
JOB	2313-020
DATE	INCOMPLETE

DRAWING	A5
NUMBER	

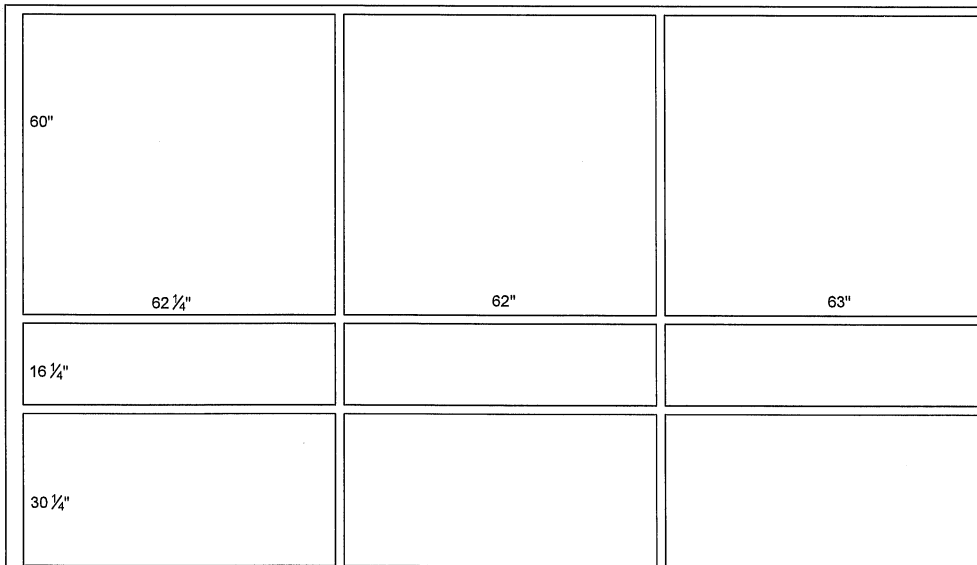
**AWHS**  
ARCHITECTS

THIS DRAWING IS AN INSTRUMENT OF SERVICE AND REMAINS THE PROPERTY OF ARD, WOOD, HOLCOMBE & SLATE, INC. ARCHITECTS AND PLANNERS. IT MAY NOT BE REPRODUCED IN ANY MANNER WITHOUT WRITTEN PERMISSION.



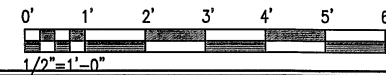
OPENING N - QTY 6  
ALUM STOREFRONT DOOR - ALUMINUM STOPS  
CLEAR TEMPERED GLASS  
ALUMINUM STOREFRONT FRAME

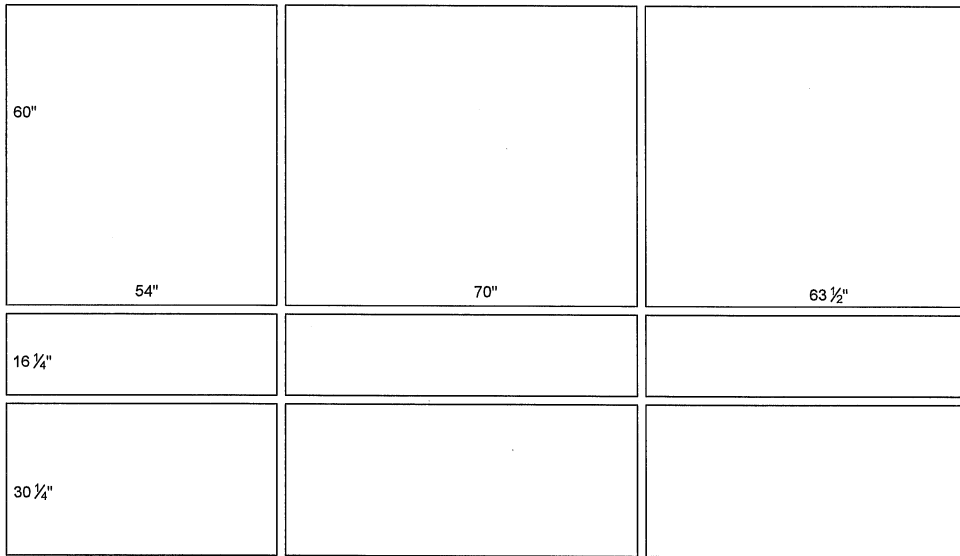
HATCHED AREA INDICATES GLASS NOT  
TO BE REPLACED



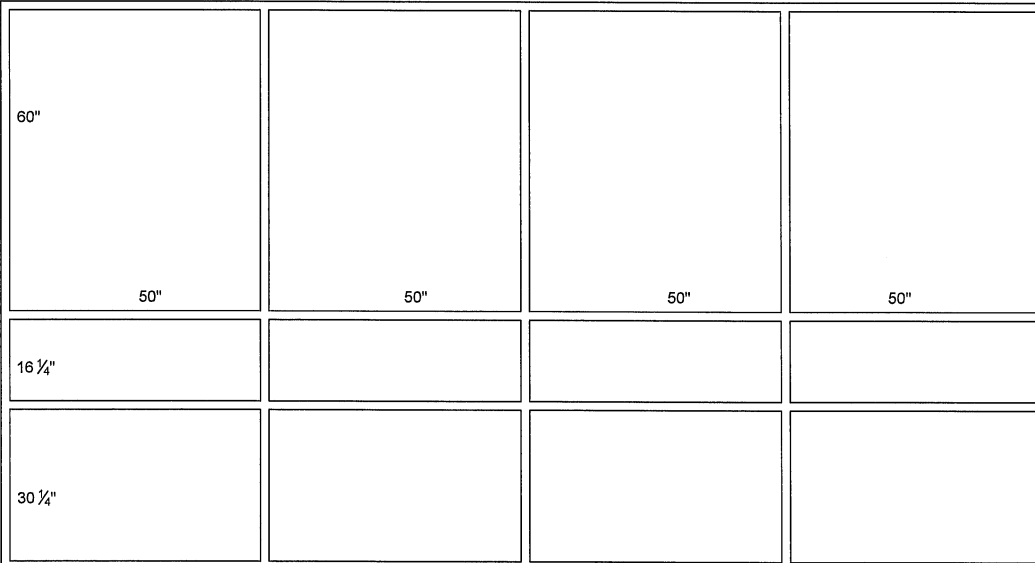
OPENING P - QTY 3  
ALUM STOREFRONT DOOR - ALUMINUM STOPS  
CLEAR TEMPERED GLASS  
ALUMINUM STOREFRONT FRAME

HATCHED AREA INDICATES GLASS NOT  
TO BE REPLACED

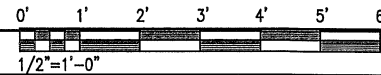




OPENING Q - QTY 3  
 ALUM STOREFRONT DOOR - ALUMINUM STOPS  
 CLEAR TEMPERED GLASS  
 ALUMINUM STOREFRONT FRAME  
 HATCHED AREA INDICATES GLASS NOT  
 TO BE REPLACED



OPENING R - QTY 3  
 ALUM STOREFRONT DOOR - ALUMINUM STOPS  
 CLEAR TEMPERED GLASS  
 ALUMINUM STOREFRONT FRAME  
 HATCHED AREA INDICATES GLASS NOT  
 TO BE REPLACED



**ARD, WOOD,  
 HOLCOMBE &  
 SLATE, INC.**  
 ARCHITECTS AND  
 PLANNERS  
 620 N. MAIN STREET | SUITE 104  
 GREENVILLE, SOUTH CAROLINA  
 29601  
 PHONE: 864-242-5450  
 WWW.GWHARCHITECTS.COM

MEMBERS: AMERICAN INSTITUTE OF ARCHITECTS,  
 NCARB CERTIFICATE 4269, 22926, 4402 & 44714

OPENING ELEVATIONS

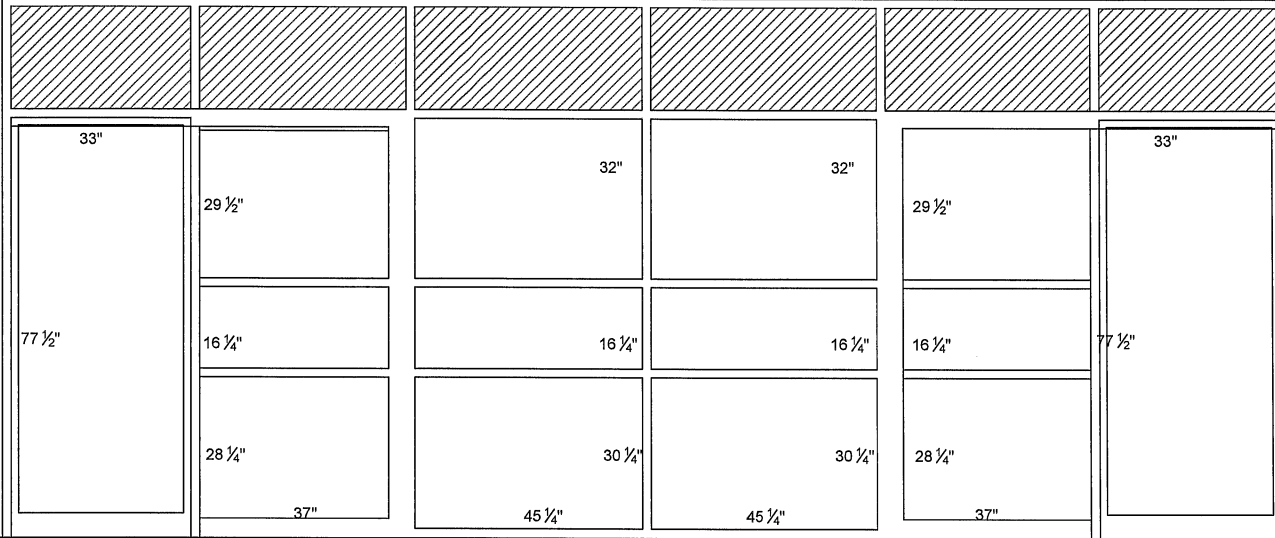
GREENVILLE COUNTY SCHOOL DISTRICT  
**DR. PHINNIZE J. FISHER**  
**MIDDLE SCHOOL**  
 GREENVILLE, SOUTH CAROLINA

DRAWN	EMB
JOB	2313-020
DATE	INCOMPLETE

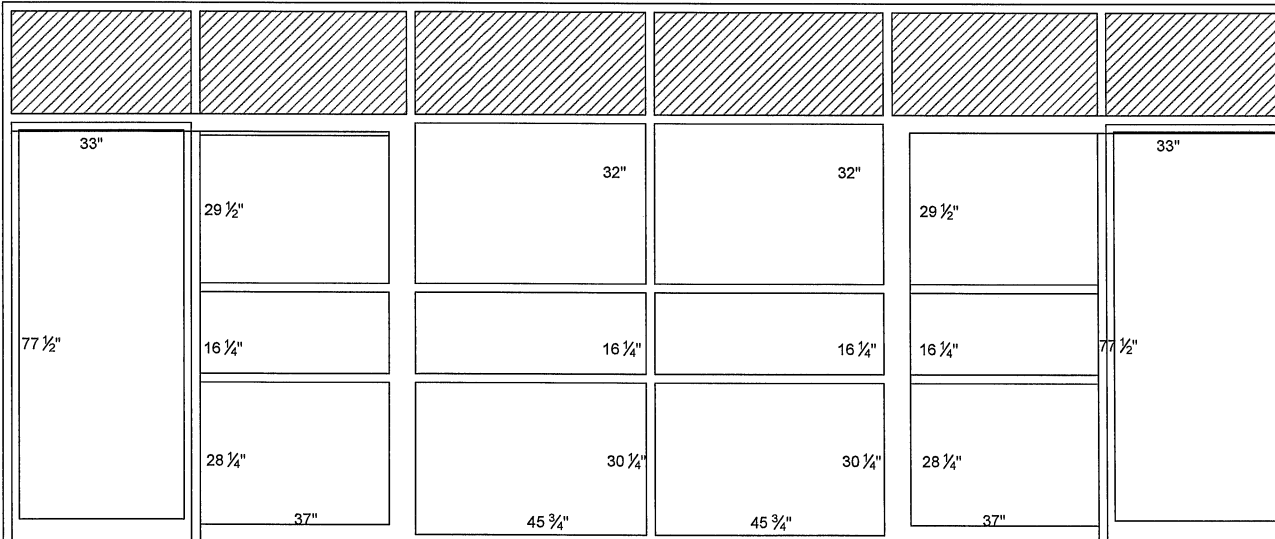
DRAWING  
  
**A6**  
 NUMBER

**AWHS**  
 ARCHITECTS

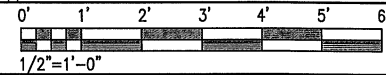
THIS DRAWING IS AN INSTRUMENT OF SERVICE AND REMAINS THE PROPERTY OF ARD, WOOD, HOLCOMBE & SLATE, INC. ARCHITECTS AND PLANNERS. IT MAY NOT BE REPRODUCED IN ANY MANNER WITHOUT WRITTEN PERMISSION.



OPENING S - QTY 2  
 ALUM STOREFRONT DOOR - ALUMINUM STOPS  
 CLEAR TEMPERED GLASS  
 ALUMINUM STOREFRONT FRAME  
 HATCHED AREA INDICATES GLASS NOT  
 TO BE REPLACED



OPENING T - QTY 1  
 ALUM STOREFRONT DOOR - ALUMINUM STOPS  
 CLEAR TEMPERED GLASS  
 ALUMINUM STOREFRONT FRAME  
 HATCHED AREA INDICATES GLASS NOT  
 TO BE REPLACED



ARD, WOOD,  
 HOLCOMBE &  
 SLATE, INC.  
 ARCHITECTS AND  
 PLANNERS  
 620 N. MAIN STREET | SUITE 104  
 GREENVILLE, SOUTH CAROLINA  
 29601  
 PHONE: 864-242-5450  
 www.awhsarchitects.com

MEMBERS: AMERICAN INSTITUTE OF ARCHITECTS  
 NCARB CERTIFICATE#S: 4209, 2263, 4607 & 4074

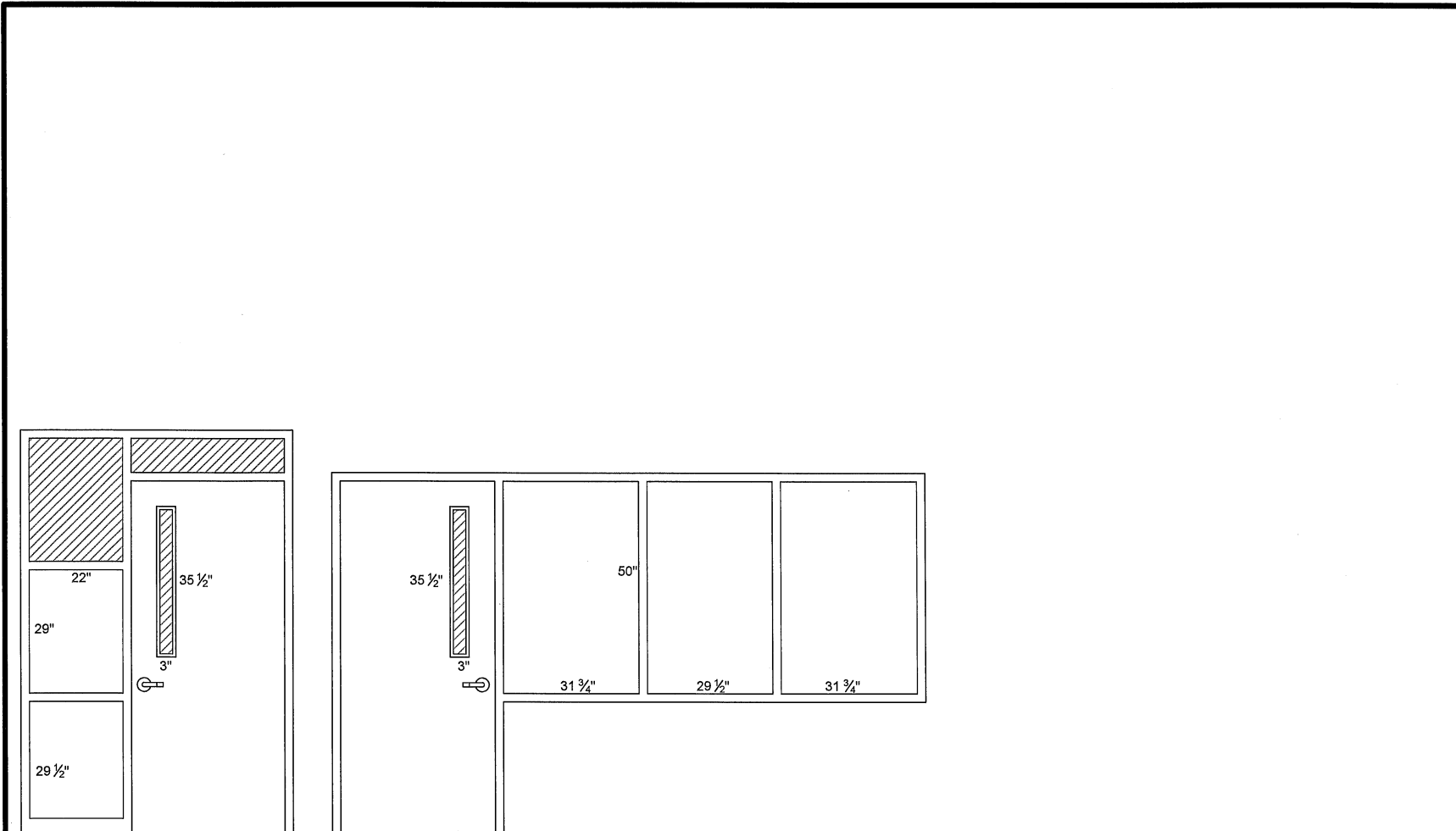
OPENING ELEVATIONS

GREENVILLE COUNTY SCHOOL DISTRICT  
**DR. PHINNIZE J. FISHER**  
**MIDDLE SCHOOL**  
 GREENVILLE, SOUTH CAROLINA

DRAWN	EMB
JOB	2313-020
DATE	INCOMPLETE



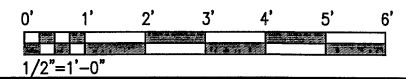
THIS DRAWING IS AN INSTRUMENT OF SERVICE AND REMAINS THE PROPERTY OF ARD, WOOD, HOLCOMBE & SLATE, INC. ARCHITECTS AND PLANNERS. IT MAY NOT BE REPRODUCED IN ANY MANNER WITHOUT WRITTEN PERMISSION.



**OPENING A - QTY 98**  
 SC WOOD DOOR - METAL STOPS  
 HM FRAME - METAL STOPS  
 CLEAR TEMPERED GLASS

**OPENING C - QTY 2**  
 SC WOOD DOOR - METAL STOPS  
 HM FRAME - METAL STOPS  
 CLEAR TEMPERED GLASS

**NOTE:**  
 HATCHED AREAS INDICATE GLASS NOT  
 TO BE REPLACED



**ARD, WOOD,  
 HOLCOMBE &  
 SLATE, INC.**  
 ARCHITECTS AND  
 PLANNERS  
 620 N. MAIN STREET | SUITE 104  
 GREENVILLE, SOUTH CAROLINA  
 29601  
 PHONE: 864-242-5450  
 www.awnsarchitects.com

MEMBERS: AMERICAN INSTITUTE OF ARCHITECTS  
 NCARB CERTIFICATES 4259, 22953, 44927 & 44714

OPENING ELEVATIONS  
 GREENVILLE COUNTY SCHOOL DISTRICT  
**J.L. MANN HIGH**  
**SCHOOL**  
 GREENVILLE, SOUTH CAROLINA

DRAWN	EMB
JOB	2313-020
DATE	INCOMPLETE

DRAWING  
  
**A1**  
 NUMBER

**AWHS**  
 ARCHITECTS

THIS DRAWING IS AN INSTRUMENT OF SERVICE AND REMAINS THE PROPERTY OF ARD, WOOD, HOLCOMBE & SLATE, INC. ARCHITECTS AND PLANNERS. IT MAY NOT BE REPRODUCED IN ANY MANNER WITHOUT WRITTEN PERMISSION.

ARD, WOOD, HOLCOMBE & SLATE, INC.  
 ARCHITECTS AND PLANNERS  
 620 N. MAIN STREET | SUITE 104  
 GREENVILLE, SOUTH CAROLINA 29601  
 PHONE: 864-242-5450  
 www.awnsarchitects.com

MEMBERS: AMERICAN INSTITUTE OF ARCHITECTS  
 NCARB CERTIFICATES 4297, 22953, 44627 & 44714

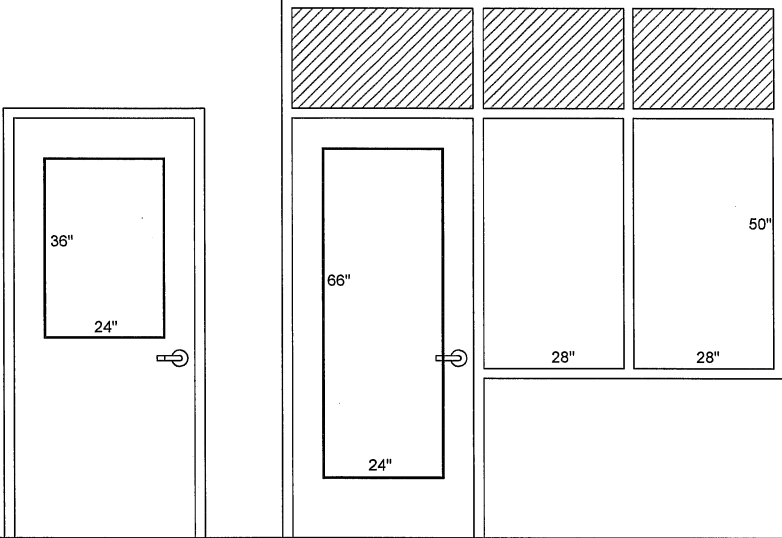
OPENING ELEVATIONS  
 GREENVILLE COUNTY SCHOOL DISTRICT  
**J.L. MANN HIGH SCHOOL**  
 GREENVILLE, SOUTH CAROLINA

DRAWN	EMB
JOB	2313-020
DATE	INCOMPLETE

DRAWING NUMBER  
 **A3**

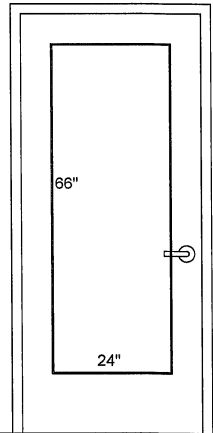
**AWHS**  
 ARCHITECTS

THIS DRAWING IS AN INSTRUMENT OF SERVICE AND REMAINS THE PROPERTY OF ARD, WOOD, HOLCOMBE & SLATE, INC.-ARCHITECTS AND PLANNERS. IT MAY NOT BE REPRODUCED IN ANY MANNER WITHOUT WRITTEN PERMISSION.

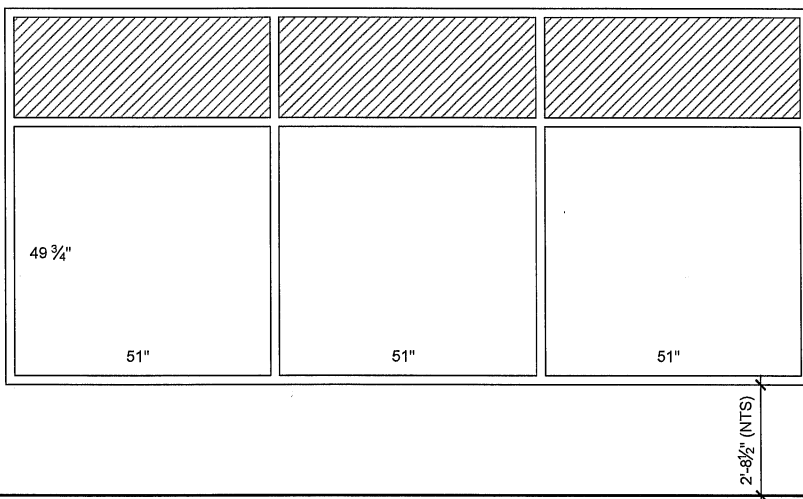


OPENING F - QTY 23  
 SC WOOD DOOR - WOOD STOPS  
 CLEAR TEMPERED GLASS

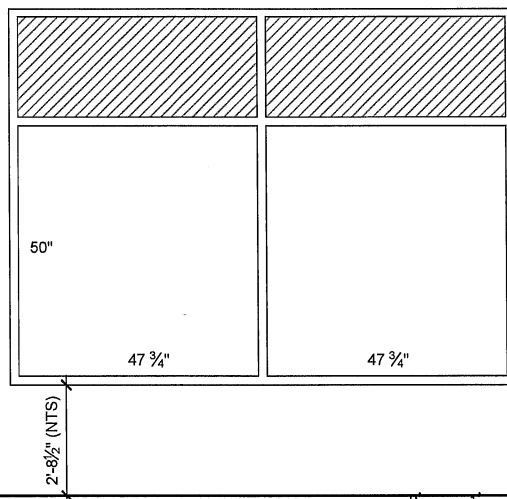
OPENING G - QTY 4  
 SC WOOD DOOR - WOOD STOPS  
 ALUM STOREFRONT FRAME  
 CLEAR TEMPERED GLASS



OPENING J - QTY 4  
 SC WOOD DOOR - WOOD STOPS  
 ALUM STOREFRONT FRAME  
 CLEAR TEMPERED GLASS

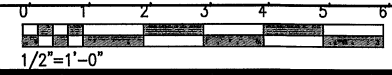


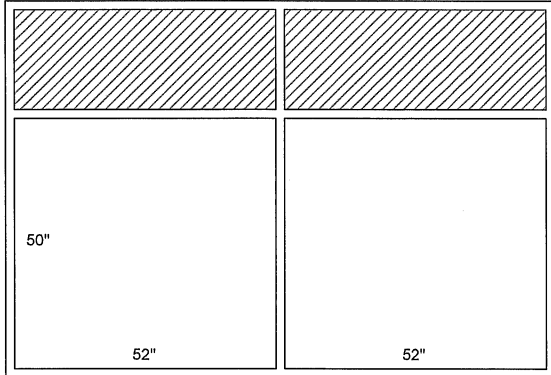
OPENING K - QTY 4  
 ALUM STOREFRONT FRAME  
 CLEAR TEMPERED GLASS



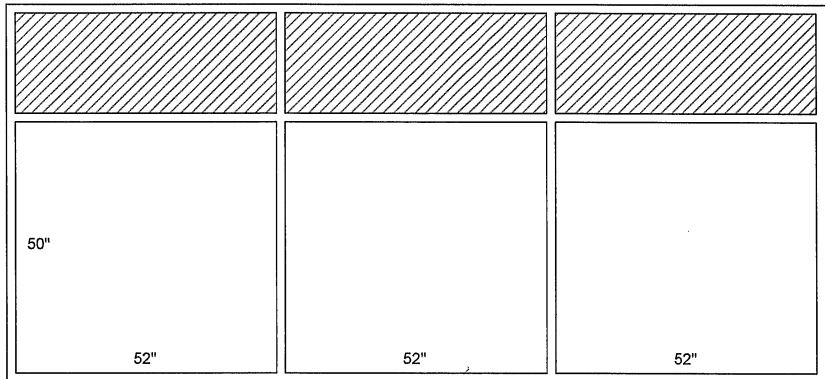
OPENING L - QTY 8  
 ALUM STOREFRONT FRAME  
 CLEAR TEMPERED GLASS

NOTE:  
 HATCHED AREAS INDICATE  
 GLASS NOT TO BE REPLACED





OPENING M - QTY 16  
ALUM STOREFRONT FRAME  
CLEAR TEMPERED GLASS



OPENING P - QTY 2  
ALUM STOREFRONT FRAME  
CLEAR TEMPERED GLASS

NOTE:  
HATCHED AREAS INDICATE  
GLASS NOT TO BE REPLACED

ARD, WOOD,  
HOLCOMBE &  
SLATE, INC.  
ARCHITECTS AND  
PLANNERS  
620 N. MAIN STREET | SUITE 104  
GREENVILLE, SOUTH CAROLINA  
29601  
PHONE: 864-242-5450  
www.ahsarchitects.com

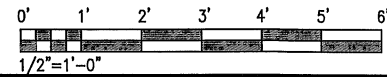
MEMBERS: AMERICAN INSTITUTE OF ARCHITECTS  
NCARB CERTIFICATES 4269, 22953, 44627 & 44714

OPENING ELEVATIONS  
GREENVILLE COUNTY SCHOOL DISTRICT  
**J.L. MANN HIGH**  
**SCHOOL**  
GREENVILLE, SOUTH CAROLINA

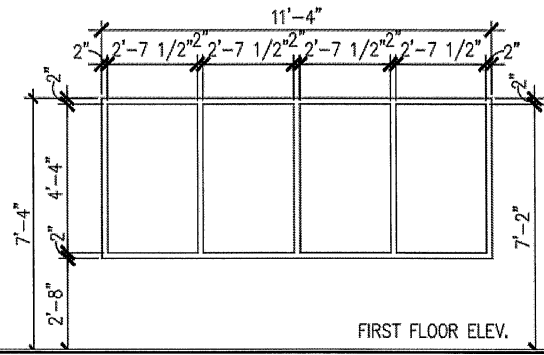
DRAWN	EMB
JOB	2313-020
DATE	INCOMPLETE

DRAWING  
**A4**  
NUMBER

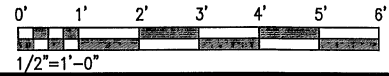
**AWS**  
ARCHITECTS



THIS DRAWING IS AN INSTRUMENT OF SERVICE AND REMAINS THE PROPERTY OF ARD, WOOD, HOLCOMBE & SLATE, INC. ARCHITECTS AND PLANNERS. IT MAY NOT BE REPRODUCED IN ANY MANNER WITHOUT WRITTEN PERMISSION.



OPENING U - QTY 1  
 HM FRAME  
 CLEAR TEMPERED GLASS



ARD, WOOD,  
 HOLCOMBE &  
 SLATE, INC.  
 ARCHITECTS AND  
 PLANNERS  
 620 N. MAIN STREET | SUITE 104  
 GREENVILLE, SOUTH CAROLINA  
 29601  
 PHONE: 864-242-5450  
 www.awhsarchitects.com

MEMBERS: AMERICAN INSTITUTE OF ARCHITECTS  
 NCARB CERTIFICATE #297, 22953, 44627 & 44714

OPENING ELEVATIONS  
 GREENVILLE COUNTY SCHOOL DISTRICT  
**J.L. MANN HIGH**  
**SCHOOL**  
 GREENVILLE, SOUTH CAROLINA

DRAWN	EMB
JOB	2313-020
DATE	INCOMPLETE

 DRAWING  
**A5**  
 NUMBER

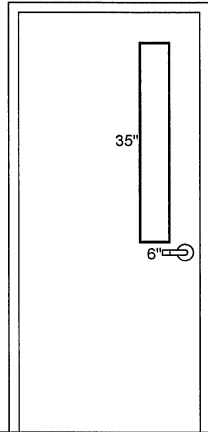
**AWHS**  
 ARCHITECTS

THIS DRAWING IS AN INSTRUMENT OF SERVICE AND REMAINS THE PROPERTY OF ARD, WOOD, HOLCOMBE & SLATE, INC. ARCHITECTS AND PLANNERS. IT MAY NOT BE REPRODUCED IN ANY MANNER WITHOUT WRITTEN PERMISSION.

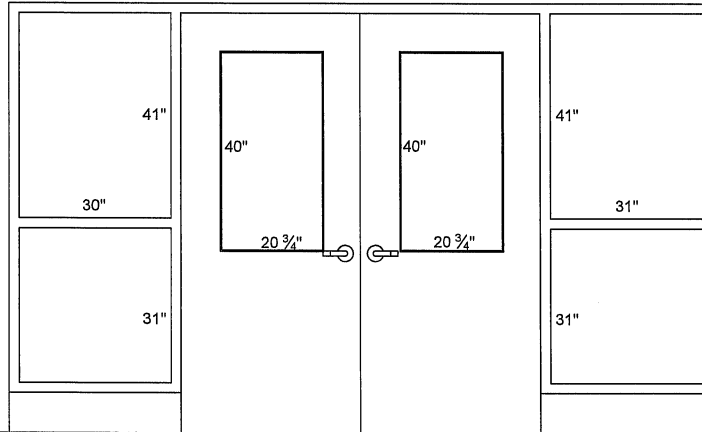
ARD, WOOD,  
HOLCOMBE &  
SLATE, INC.  
ARCHITECTS AND  
PLANNERS  
620 N. MAIN STREET | SUITE 104  
GREENVILLE, SOUTH CAROLINA  
29601  
PHONE: 864-242-5450  
www.ahsarchitects.com

MEMBERS: AMERICAN INSTITUTE OF ARCHITECTS  
NCARB CERTIFICATES 4259, 22953, 44927 & 44714

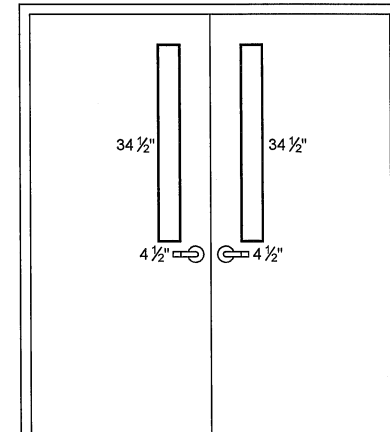
OPENING ELEVATIONS  
GREENVILLE COUNTY SCHOOL DISTRICT  
**LAKEVIEW MIDDLE  
SCHOOL**  
GREENVILLE, SOUTH CAROLINA



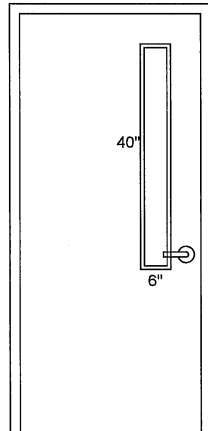
OPENING A - QTY 66  
SC WOOD DOOR - WOOD STOPS  
CLEAR TEMPERED GLASS



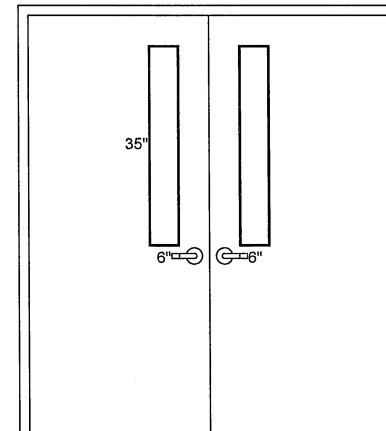
OPENING B - QTY 2  
SC WOOD DOOR - WOOD STOPS  
HM FRAME - METAL STOPS  
CLEAR TEMPERED GLASS



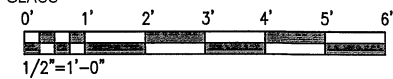
OPENING D - QTY 2  
HM DOOR - METAL STOPS  
CLEAR TEMPERED GLASS



OPENING E - QTY 1  
HM DOOR - METAL STOPS  
CLEAR TEMPERED GLASS



OPENING H - QTY 1  
SC WOOD DOOR - WOOD STOPS  
CLEAR TEMPERED GLASS

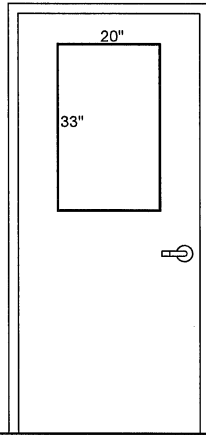


DRAWN	KES
JOB	2313-020
DATE	INCOMPLETE

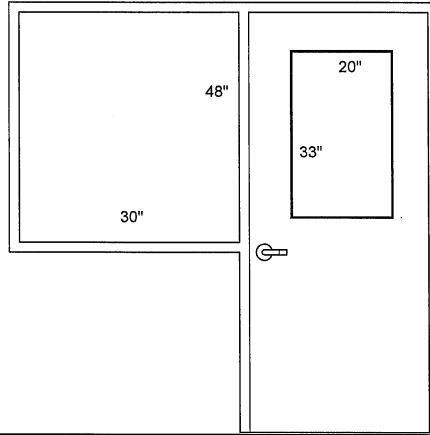
DRAWING  
**A1**  
NUMBER

**AWHS**  
ARCHITECTS

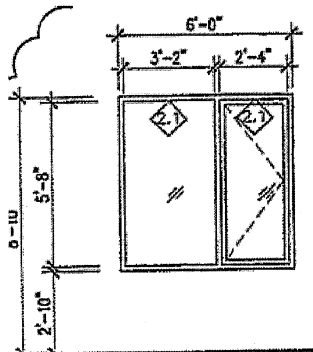
THIS DRAWING IS AN INSTRUMENT OF SERVICE AND REMAINS THE PROPERTY OF ARD, WOOD, HOLCOMBE & SLATE, INC./ARCHITECTS AND PLANNERS. IT MAY NOT BE REPRODUCED IN ANY MANNER WITHOUT WRITTEN PERMISSION.



OPENING B - QTY 3  
SC WOOD DOOR - METAL STOPS  
CLEAR TEMPERED GLASS

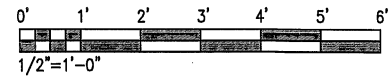


OPENING DE - QTY 1  
SC WOOD DOOR - METAL STOPS  
HM FRAME  
CLEAR TEMPERED GLASS



OPENING H - QTY 1  
HM FRAME  
CLEAR TEMPERED GLASS

NOTE:  
HATCHED AREA INDICATES  
GLASS NOT TO BE REPLACED



ARD, WOOD,  
HOLCOMBE &  
SLATE, INC.  
ARCHITECTS AND  
PLANNERS  
620 N. MAIN STREET | SUITE 104  
GREENVILLE, SOUTH CAROLINA  
29601  
PHONE: 864-249-5450  
www.awnsrchitects.com

MEMBERS: AMERICAN INSTITUTE OF ARCHITECTS  
NCARB CERTIFICATES 4259, 22953, 44627 & 44714

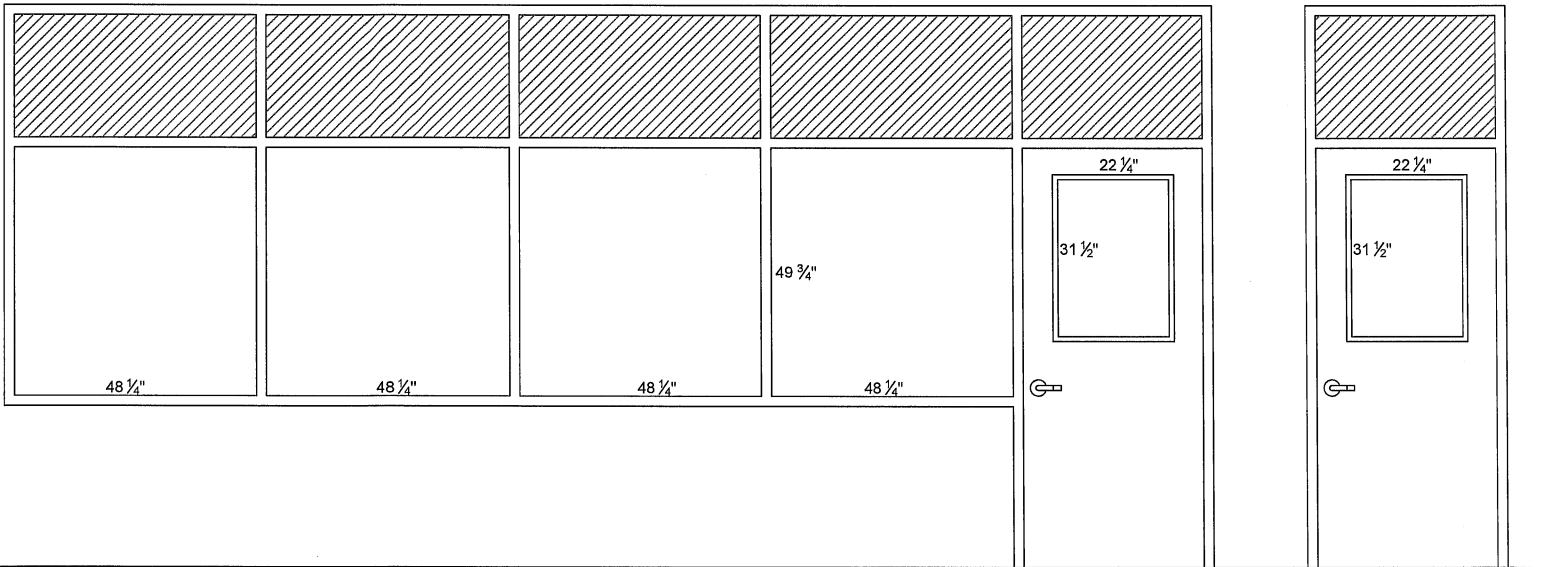
OPENING ELEVATIONS  
GREENVILLE COUNTY SCHOOL DISTRICT  
**RIVERSIDE HIGH**  
**SCHOOL**  
GREENVILLE, SOUTH CAROLINA

DRAWN	KES
JOB	2313-020
DATE	INCOMPETE

DRAWING  
**A1**  
NUMBER

**AWHS**  
ARCHITECTS

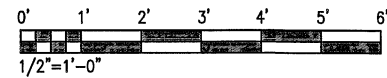
THIS DRAWING IS AN INSTRUMENT OF SERVICE AND REMAINS THE PROPERTY OF ARD, WOOD, HOLCOMBE & SLATE, INC. ARCHITECTS AND PLANNERS. IT MAY NOT BE REPRODUCED IN ANY MANNER WITHOUT WRITTEN PERMISSION.



DOOR A - QTY 16  
 SC WOOD DOOR - METAL STOPS  
 ALUMINUM STOREFRONT FRAME  
 CLEAR TEMPERED GLASS

NOTE:  
 HATCHED AREA INDICATES  
 GLASS NOT TO BE REPLACED

DOOR A1 - QTY 26  
 SC WOOD DOOR - METAL STOPS  
 CLEAR TEMPERED GLASS



ARD, WOOD,  
 HOLCOMBE &  
 SLATE, INC.  
 ARCHITECTS AND  
 PLANNERS  
 620 N. MAIN STREET | SUITE 104  
 GREENVILLE, SOUTH CAROLINA  
 29601  
 PHONE: 864-242-5450  
 www.ahsarchitects.com

MEMBERS: AMERICAN INSTITUTE OF ARCHITECTS  
 NCARB CERTIFICATE: 4039, 22953, 4407 & 44714

DOOR ELEVATIONS  
 GREENVILLE COUNTY SCHOOL DISTRICT  
**RUDOLPH GORDON ELEMENTARY**  
**SCHOOL**  
 GREENVILLE, SOUTH CAROLINA

DRAWN	EMB
JOB	2313-020
DATE	INCOMPLETE

DRAWING  
 **A1**  
 NUMBER

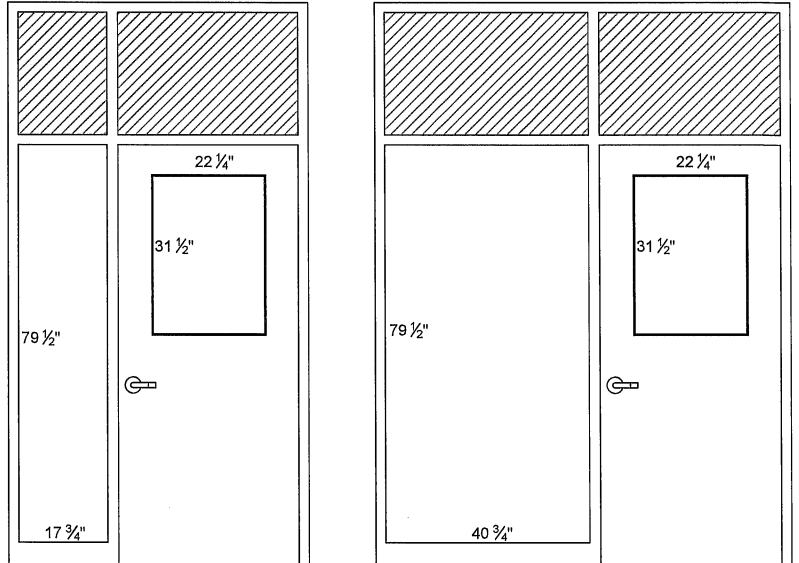
**AWHS**  
 ARCHITECTS

THIS DRAWING IS AN INSTRUMENT OF SERVICE AND REMAINS THE PROPERTY OF ARD, WOOD, HOLCOMBE & SLATE, INC. ARCHITECTS AND PLANNERS. IT MAY NOT BE REPRODUCED IN ANY MANNER WITHOUT WRITTEN PERMISSION.

ARD, WOOD, HOLCOMBE & SLATE, INC.  
 ARCHITECTS AND PLANNERS  
 420 N. MAIN STREET | SUITE 104  
 GREENVILLE, SOUTH CAROLINA 29601  
 PHONE: 864-242-5450  
 www.awhsarchitects.com

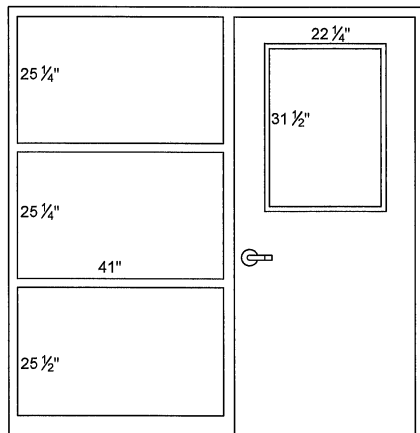
MEMBERS: AMERICAN INSTITUTE OF ARCHITECTS  
 NCARB CERTIFICATES 4259, 22533, 44637 & 46714

DOOR ELEVATIONS  
 GREENVILLE COUNTY SCHOOL DISTRICT  
**RUDOLPH GORDON ELEMENTARY SCHOOL**  
 GREENVILLE, SOUTH CAROLINA

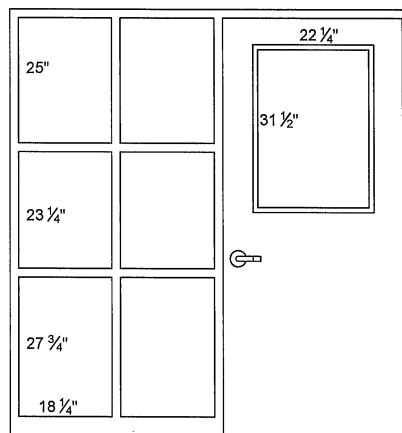


DOOR C - QTY 4  
 SC WOOD DOOR - METAL STOPS  
 ALUMINUM STOREFRONT FRAME  
 CLEAR TEMPERED GLASS

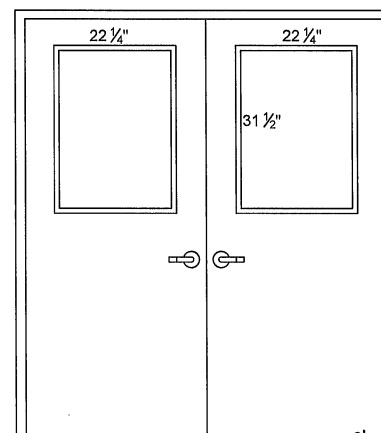
DOOR E - QTY 4  
 SC WOOD DOOR - METAL STOPS  
 ALUMINUM STOREFRONT FRAME  
 CLEAR TEMPERED GLASS



DOOR G - QTY 2  
 SC WOOD DOOR - METAL STOPS  
 ALUMINUM STOREFRONT FRAME  
 CLEAR TEMPERED GLASS

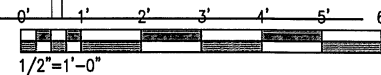


DOOR H - QTY 4  
 SC WOOD DOOR - METAL STOPS  
 ALUMINUM STOREFRONT FRAME  
 CLEAR TEMPERED GLASS



DOOR J - QTY 2  
 SC WOOD DOOR - METAL STOPS  
 CLEAR TEMPERED GLASS

NOTE:  
 HATCHED AREA INDICATES  
 GLASS NOT TO BE REPLACED



DRAWN	EMB
JOB	2313-020
DATE	INCOMPLETE

DRAWING  
 **A2**  
 NUMBER

**AWHS**  
 ARCHITECTS

THIS DRAWING IS AN INSTRUMENT OF SERVICE AND REMAINS THE PROPERTY OF ARD, WOOD, HOLCOMBE & SLATE, INC. ARCHITECTS AND PLANNERS. IT MAY NOT BE REPRODUCED IN ANY MANNER WITHOUT WRITTEN PERMISSION.

ARD, WOOD,  
HOLCOMBE &  
SLATE, INC.  
ARCHITECTS AND  
PLANNERS  
620 N. MAIN STREET | SUITE 104  
GREENVILLE, SOUTH CAROLINA  
29601  
PHONE: 864-242-5450  
www.awhsarchitects.com

MEMBERS AMERICAN INSTITUTE OF ARCHITECTS  
NCARB CERTIFICATES 4259, 2253, 4407 & 4074

DOOR ELEVATIONS

GREENVILLE COUNTY SCHOOL DISTRICT

**RUDOLPH GORDON ELEMENTARY  
SCHOOL**

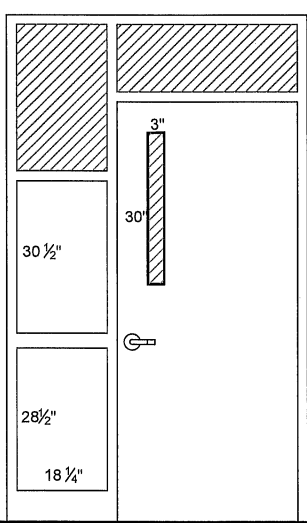
GREENVILLE, SOUTH CAROLINA

DRAWN	EMB
JOB	2313-020
DATE	INCOMPLETE
DRAWING	A3
NUMBER	

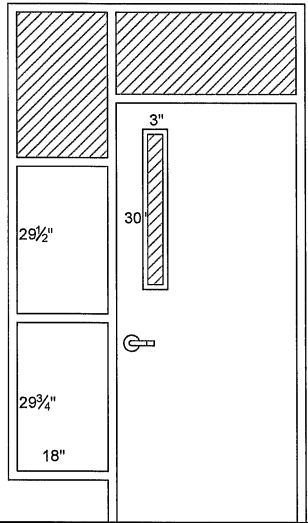


THIS DRAWING IS AN INSTRUMENT OF SERVICE AND REMAINS THE PROPERTY OF ARD, WOOD, HOLCOMBE & SLATE, INC. ARCHITECTS AND PLANNERS. IT MAY NOT BE REPRODUCED IN ANY MANNER WITHOUT WRITTEN PERMISSION.

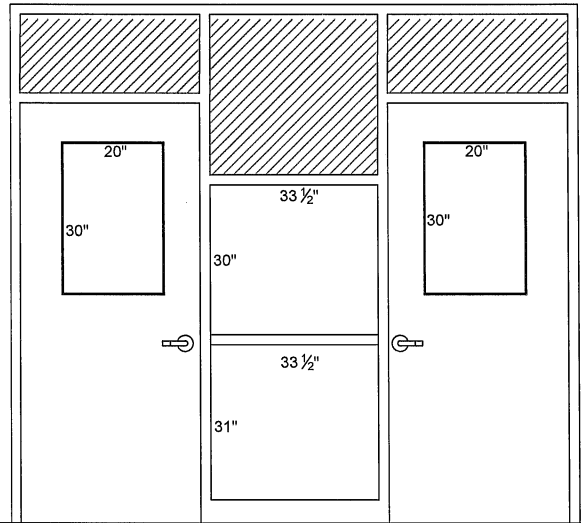
NOTE:  
HATCHED AREA INDICATES  
GLASS NOT TO BE REPLACED



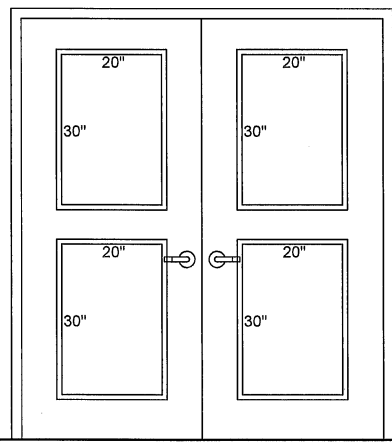
DOOR K - QTY 51  
SC WOOD DOOR - WOOD STOPS  
HM FRAME - METAL STOPS  
CLEAR TEMPERED GLASS



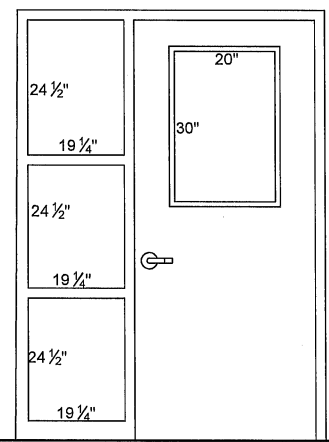
DOOR M - QTY 12  
SC WOOD DOOR - METAL STOPS  
ALUMINUM STOREFRONT FRAME  
CLEAR TEMPERED GLASS



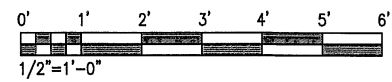
DOOR P - QTY 1  
SC WOOD DOOR - WOOD STOPS  
ALUMINUM STOREFRONT FRAME  
CLEAR TEMPERED GLASS



DOOR N - QTY 2  
SC WOOD DOOR - METAL STOPS  
CLEAR TEMPERED GLASS



DOOR M1 - QTY 1  
SC WOOD DOOR - METAL STOPS  
HM FRAME - METAL STOPS  
CLEAR TEMPERED GLASS



ARD, WOOD,  
HOLCOMBE &  
SLATE, INC.  
ARCHITECTS AND  
PLANNERS  
420 N. MAIN STREET | SUITE 104  
GREENVILLE, SOUTH CAROLINA  
29601  
PHONE: 864-242-5450  
www.awhsarchitects.com

MEMBERS: AMERICAN INSTITUTE OF ARCHITECTS  
NCARB CERTIFICATES 4259, 22953, 44027 & 44014

DOOR ELEVATIONS

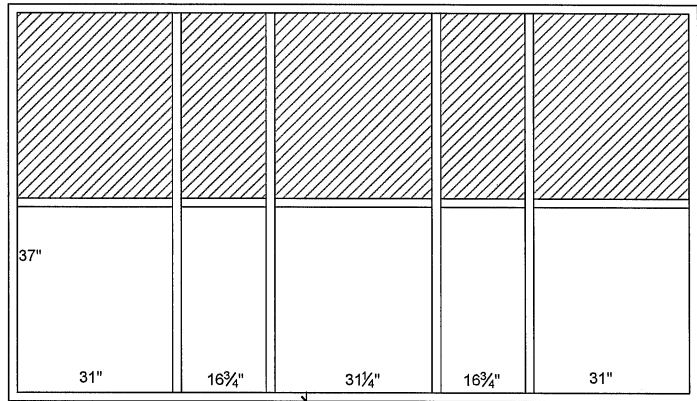
GREENVILLE COUNTY SCHOOL DISTRICT  
**RUDOLPH GORDON ELEMENTARY  
SCHOOL**  
GREENVILLE, SOUTH CAROLINA

DRAWN	EMB
JOB	2313-020
DATE	INCOMPLETE
DRAWING <b>A4</b> NUMBER	



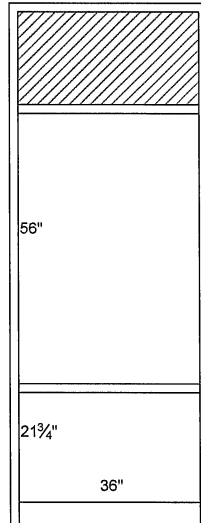
THIS DRAWING IS AN INSTRUMENT OF SERVICE AND REMAINS THE PROPERTY OF ARD, WOOD, HOLCOMBE & SLATE, INC. ARCHITECTS AND PLANNERS. IT MAY NOT BE REPRODUCED IN ANY MANNER WITHOUT WRITTEN PERMISSION.

NOTE:  
HATCHED AREA INDICATES  
GLASS NOT TO BE REPLACED

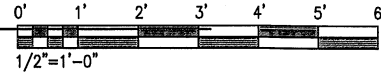


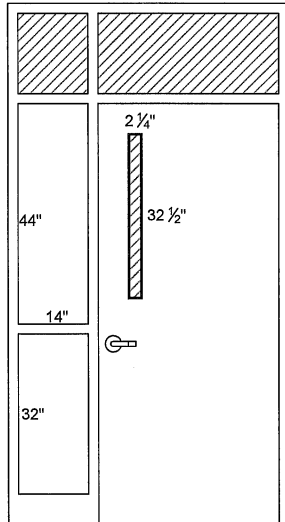
2'-8" (NTS)

OPENING S - QTY 4  
ALUMINUM STOREFRONT  
CLEAR TEMPERED GLASS



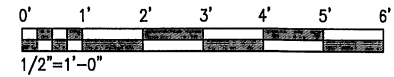
OPENING T - QTY 1  
ALUMINUM STOREFRONT  
CLEAR TEMPERED GLASS





OPENING A - QTY 92  
 SC WOOD DOOR - WOOD STOPS  
 HM FRAME - METAL STOPS  
 CLEAR TEMPERED GLASS

**NOTE:**  
 HATCHED AREA INDICATES GLASS NOT  
 TO BE REPLACED



**ARD, WOOD,  
 HOLCOMBE &  
 SLATE, INC.**  
 ARCHITECTS AND  
 PLANNERS  
 620 N. MAIN STREET | SUITE 104  
 GREENVILLE, SOUTH CAROLINA  
 29601  
 PHONE: 864-242-5450  
 www.ahsarchitects.com

MEMBER: AMERICAN INSTITUTE OF ARCHITECTS  
 NCARB CERTIFICATES 4259, 22953, 44697 & 44714

OPENING ELEVATIONS

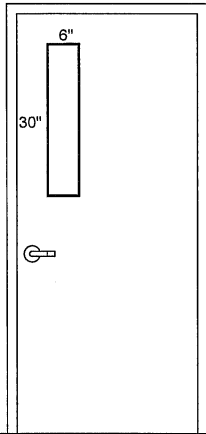
GREENVILLE COUNTY SCHOOL DISTRICT  
**TRAVELERS REST HIGH  
 SCHOOL**  
 TRAVELERS REST, SOUTH CAROLINA

DRAWN	KES
JOB	2313-020
DATE	INCOMPLETE

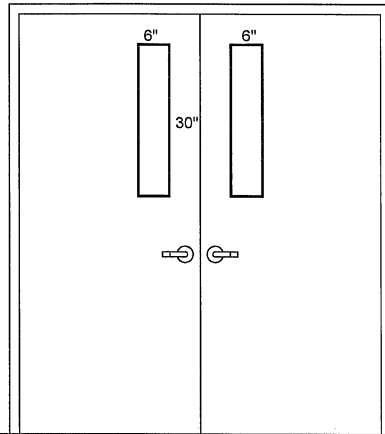
DRAWING  
  
**A1**  
 NUMBER

**AWHS**  
 ARCHITECTS

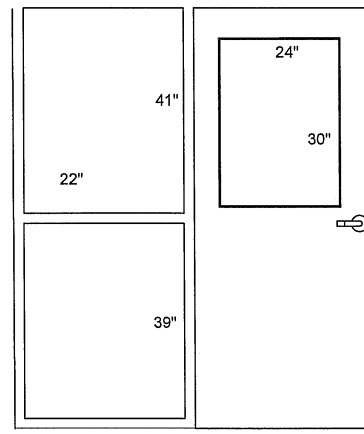
THIS DRAWING IS AN INSTRUMENT OF SERVICE AND REMAINS THE PROPERTY OF ARD, WOOD, HOLCOMBE & SLATE, INC. ARCHITECTS AND PLANNERS. IT MAY NOT BE REPRODUCED IN ANY MANNER WITHOUT WRITTEN PERMISSION.



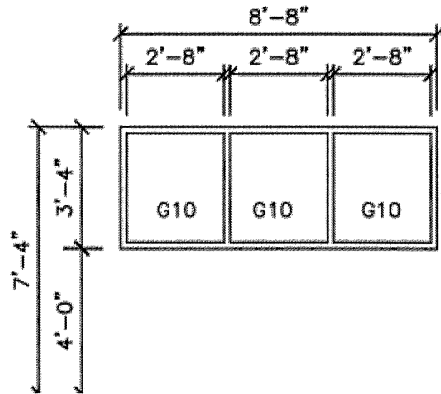
OPENING A - QTY 96  
SC WOOD DOOR - WOOD STOPS  
CLEAR TEMPERED GLASS



OPENING B - QTY 14  
SC WOOD DOOR - WOOD STOPS  
CLEAR TEMPERED GLASS

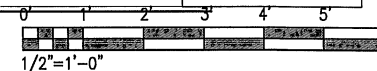
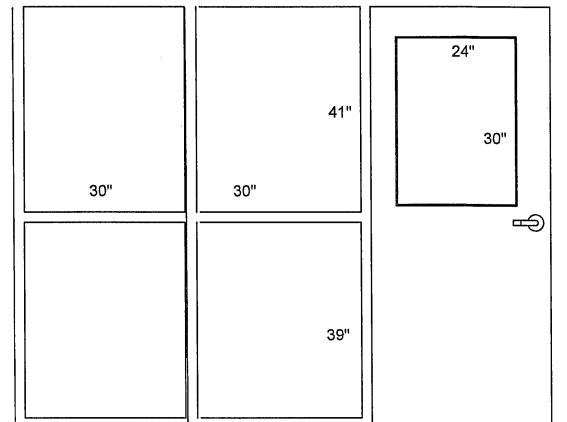


OPENING D - QTY 2  
SC WOOD DOOR - WOOD STOPS  
HM FRAME - METAL STOPS  
CLEAR TEMPERED GLASS



OPENING G - QTY 2  
HM FRAME  
CLEAR TEMPERED GLASS

OPENING K - QTY 1  
SC WOOD DOOR - WOOD STOPS  
HM FRAME - METAL STOPS  
CLEAR TEMPERED GLASS



ARD, WOOD,  
HOLCOMBE &  
SLATE, INC.  
ARCHITECTS AND  
PLANNERS  
620 N. MAIN STREET | SUITE 104  
GREENVILLE, SOUTH CAROLINA  
29601  
PHONE: 864-242-5450  
WWW.AWHSARCHITECTS.COM

MEMBERS: AMERICAN INSTITUTE OF ARCHITECTS  
NCARB CERTIFICATES 44291, 22563, 44627 & 44714

OPENING ELEVATIONS

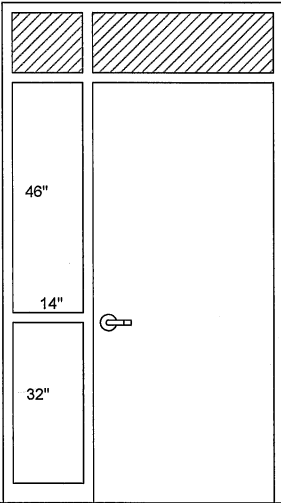
GREENVILLE COUNTY SCHOOL DISTRICT  
**WADE HAMPTON HIGH**  
**SCHOOL**  
GREENVILLE, SOUTH CAROLINA

DRAWN	EMB
JOB	2313-020
DATE	INCOMPLETE

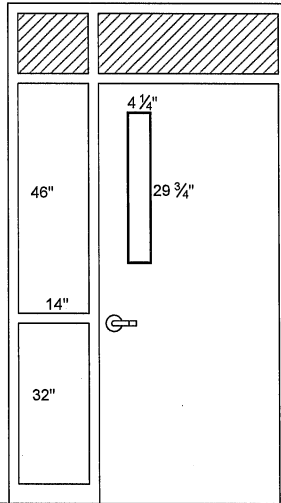
DRAWING  
**A1**  
NUMBER

**AWHS**  
ARCHITECTS

THIS DRAWING IS AN INSTRUMENT OF SERVICE AND REMAINS THE PROPERTY OF ARD, WOOD, HOLCOMBE & SLATE, INC. ARCHITECTS AND PLANNERS. IT MAY NOT BE REPRODUCED IN ANY MANNER WITHOUT WRITTEN PERMISSION.

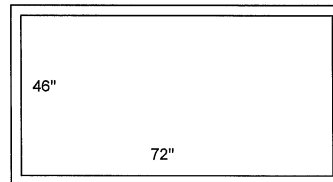


OPENING A - QTY 100  
 SC WOOD DOOR - WOOD STOPS  
 HM FRAME- METAL STOPS  
 CLEAR TEMPERED GLASS



OPENING C - QTY 23  
 SC WOOD DOOR - WOOD STOPS  
 HM FRAME- METAL STOPS  
 CLEAR TEMPERED GLASS

NOTE:  
 HATCHED AREAS INDICATE  
 GLASS NOT TO BE REPLACED



OPENING L - QTY 4  
 HM FRAME  
 CLEAR TEMPERED GLASS



ARD, WOOD,  
 HOLCOMBE &  
 SLATE, INC.  
 ARCHITECTS AND  
 PLANNERS  
 620 N. MAIN STREET | SUITE 104  
 GREENVILLE, SOUTH CAROLINA  
 29601  
 PHONE: 864-242-5450  
 www.awhsarchitects.com

MEMBERS: AMERICAN INSTITUTE OF ARCHITECTS  
 NCARB CERTIFICATES 46291, 22763, 44827 & 44714

OPENING ELEVATIONS  
 GREENVILLE COUNTY SCHOOL DISTRICT  
**WOODMONT HIGH  
 SCHOOL**  
 PIEDMONT, SOUTH CAROLINA

DRAWN	EMB
JOB	2313-020
DATE	INCOMPLETE

DRAWING  
  
**A1**  
 NUMBER

**AWHS**  
 ARCHITECTS

THIS DRAWING IS AN INSTRUMENT OF SERVICE AND REMAINS THE PROPERTY OF ARD, WOOD, HOLCOMBE & SLATE, INC. ARCHITECTS AND PLANNERS. IT MAY NOT BE REPRODUCED IN ANY MANNER WITHOUT WRITTEN PERMISSION.