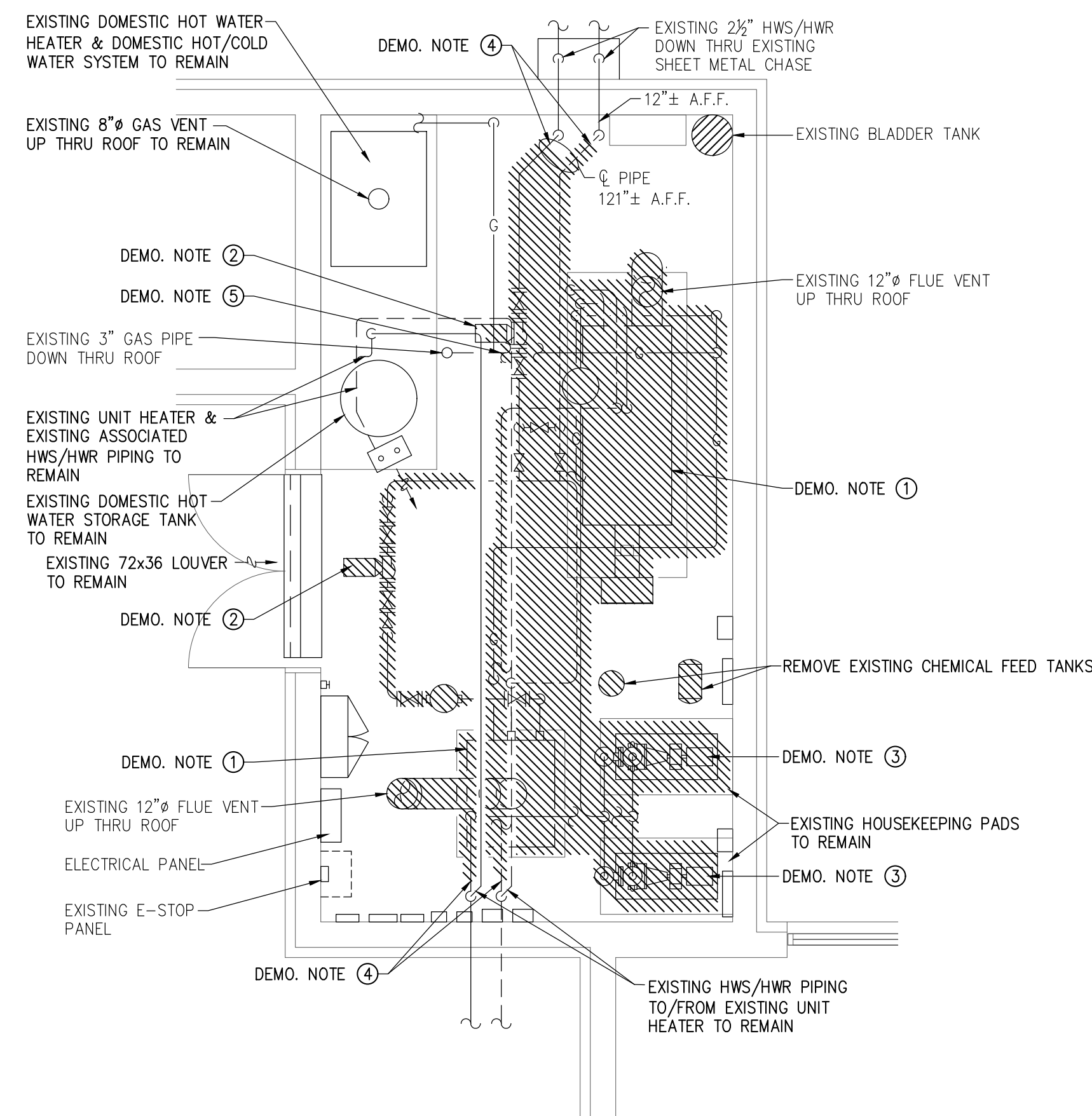
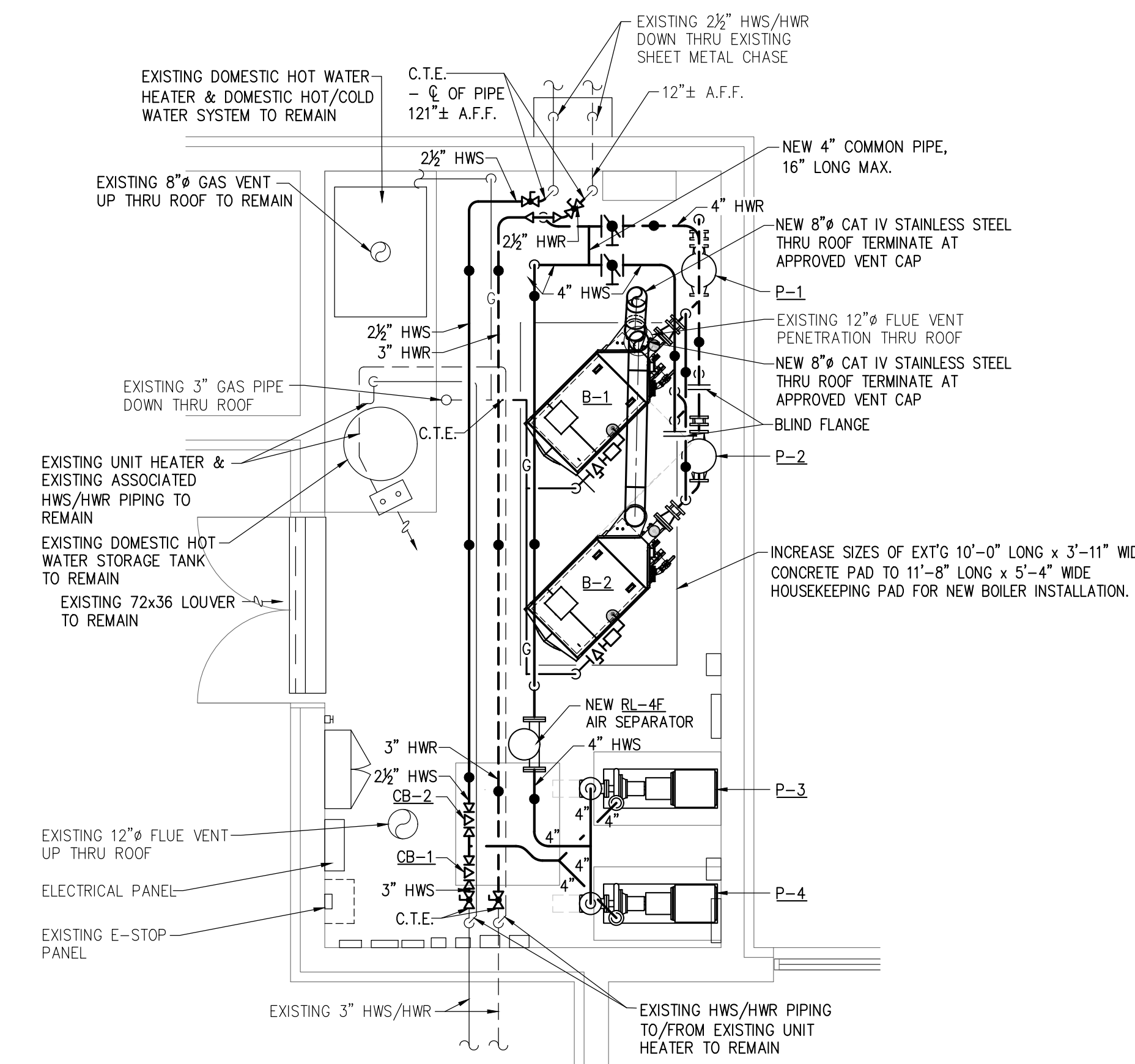
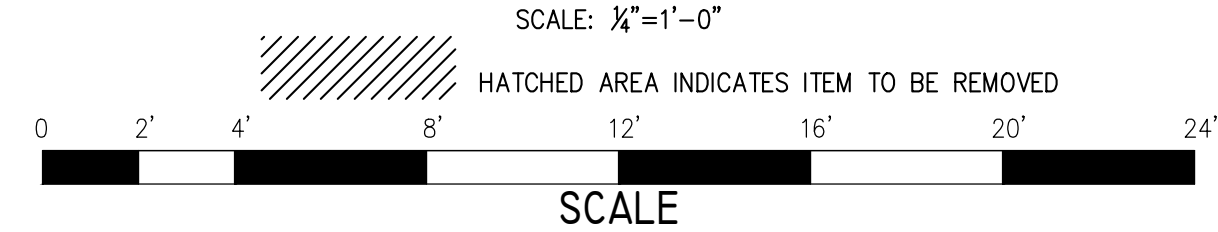


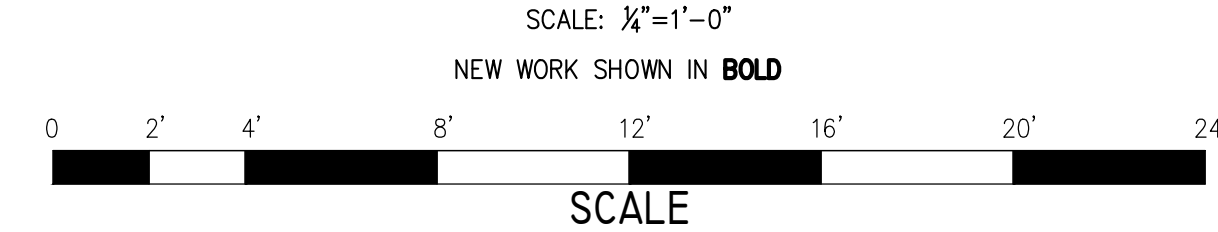
This drawing is the property of Peritus Engineers & Associates, Inc. and shall not be used or reproduced without their written permission. © 2021 PERITUS ENGINEERS & ASSOCIATES, INC.



MECHANICAL ROOM PLAN - DEMOLITION

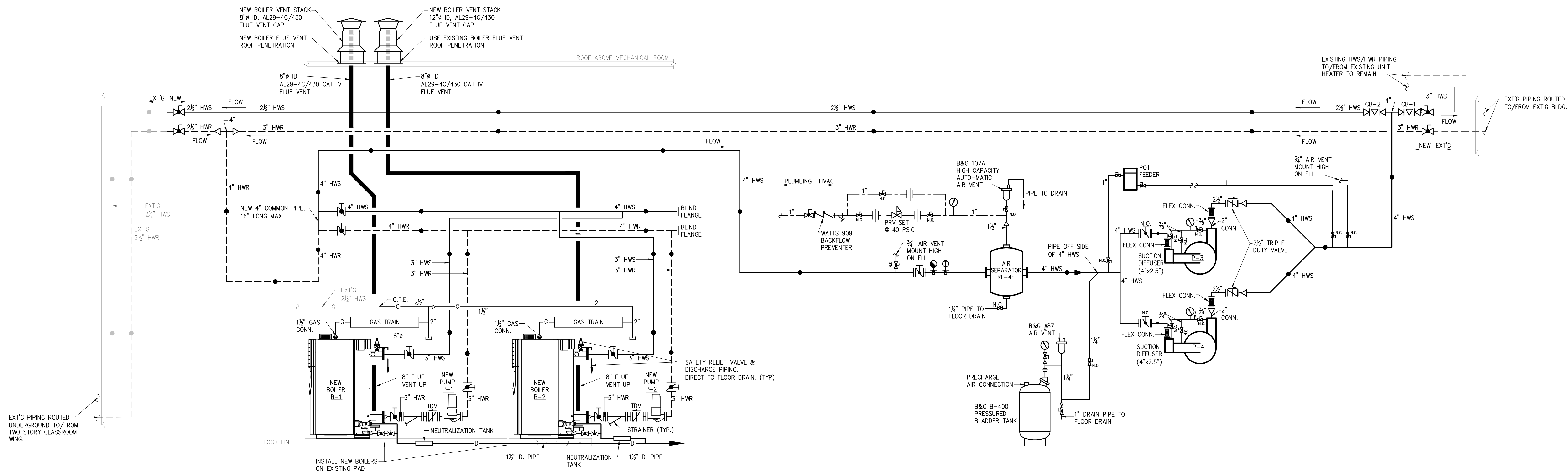


MECHANICAL ROOM PLAN - NEW WORK



DEMOLITION NOTES:

- ① REMOVE EXISTING BOILER, AS WELL AS ASSOCIATED PIPING, PIPING ACCESSORIES (VALVES, AIR SEPARATOR, ETC.), & FLUE VENT.
- ② REMOVE EXISTING STACKED PUMPS, AS WELL AS ASSOCIATED PIPING & PIPING ACCESSORIES (VALVES, ETC.)
- ③ REMOVE EXISTING BASEMOUNTED PUMPS, AS WELL AS ASSOCIATED PIPING & PIPING ACCESSORIES (VALVES, ETC.)
- ④ DISCONNECT & REMOVE EXISTING HWS/HWR PIPING, AT THIS POINT, HIGH IN MECHANICAL ROOM, & PREPARE FOR RECONNECTION, AS SHOWN ON NEW WORK PLAN.
- ⑤ DISCONNECT & REMOVE EXISTING GAS PIPING, AT THIS POINT, & PREPARE FOR RECONNECTION, AS SHOWN ON NEW WORK PLAN.



HEATING HOT WATER PIPING FLOW DIAGRAM

NO SCALE
ALL NEW WORK SHOWN IN BOLD

REVISIONS		DESCRIPTION
NO.	DATE	BY
A	10/13/2022	JCP
		ISSUE FOR REVIEW

BURDETTE
BURDETTE INC.
ARCHITECTS & ENGINEERS
1000 W. 10TH ST. SUITE 200
DENVER, CO 80202
(303) 733-2000
www.burdetteinc.com

PERITUS
PERITUS ENGINEERS & ASSOCIATES, INC.
SKILLED IN THE ART OF ENGINEERING
1000 W. 10TH ST. SUITE 200
DENVER, CO 80202
(303) 733-2000
www.peritusinc.com

BOILER REPLACEMENT FOR
GREENBRIER ELEMENTARY SCHOOL
GREENVILLE, SOUTH CAROLINA
MECHANICAL ROOM PLANS & PIPING SCHEMATIC

DESIGN	JCP	DRAWN	TMI
CHECKED	JCP		
DATE	10-13-2022		
PERITUS JOB NO.	220506		
SHEET			