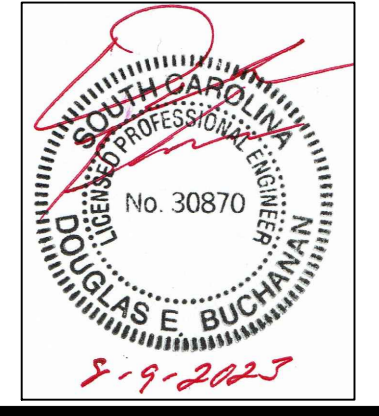


# BETHEL ELEMENTARY SCHOOL

## 111 BETHEL SCHOOL RD, SIMPSONVILLE, SC

### BUILDING WALL REPAIR



SEAL

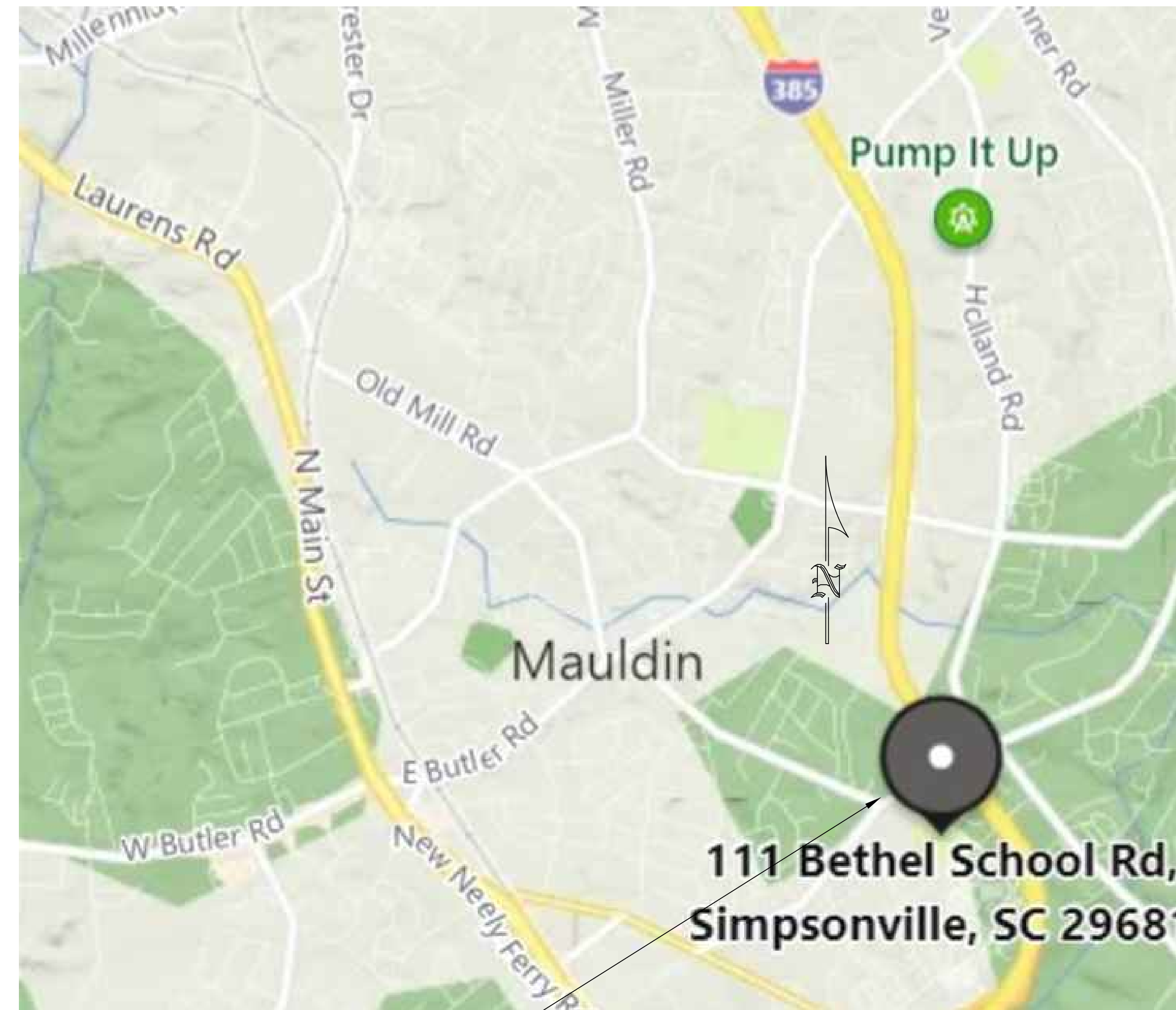
**School Dist of Greenville County**  
301 E Camperdown Way  
Greenville, SC 29601

OWNER

**BETHEL ELEM. SCHOOL**  
111 BETHEL SCHOOL RD  
SIMPSONVILLE, SOUTH CAROLINA  
LOBBY WALL REPAIR



BETHEL ELEMENTARY SCHOOL



VICINITY MAP

BETHEL ELEMENTARY SCHOOL

**SCOPE OF PROJECT**

1. INSTALL NEW DRAINAGE SYSTEM PER DRAWINGS. CONTRACTOR SHALL LOCATE UTILITIES BEFORE DIGGING. IF ANY UTILITIES ARE CUT, THEY SHALL BE REPAIRED THE SAME DAY AT THE CONTRACTOR'S EXPENSE.
2. REMOVE BLOCK WALL AROUND COURT YARD.
3. REPLACE CONCRETE COURT YARD WITH STAMPED AND STAINED CONCRETE.
4. INSTALL FRENCH DRAIN AND COAT EXISTING WALLS.
5. INSTALL NEW METAL WALL PANEL AND NEW LETTERS.
6. INSTALL NEW COPING AND FLASHING FROM THE ROOF TO THE COPING.
7. GENERAL CLEAN UP AND SEEDING DENUDED AREAS.
8. INSTALL PLANS AND PLANTING BED.
9. GENERAL CLEAN UP

**NOTES:**

1. SEEDING SPECIFICATION
  - A. K31 - AT 100 POUNDS PER ACRE
  - B. DUTCH WHITE CLOVER (TRIFOLIUM REPENS)- 1 LB PER ACRE
  - C. LIME - AT 50 POUNDS PER ACRE
  - D. 10-10-10 FERTILIZER - AT 100 POUNDS PER ACRE
  - E. ANNUAL RYE - AT 10 POUNDS PER ACRE
  - F. JUTE MAT - 100% BIODEGRADABLE HELD IN PLACE WITH LANDSCAPE STAPLES ON HILL
  - G. WATER ONCE A DAY FOR THREE DAYS.
2. ALL NEW CONCRETE ADJACENT TO EXISTING CONCRETE SHALL HAVE 1/4" FOAM CONTROL JOINTS
3. CONCRETE MIX
  - A. CEMENT - 1L 4,000 PSI BEFORE ADDING FIBER
  - B. FLY ASH, CLASS F - 25% MAXIMUM
  - C. 3/8" NORMAL WEIGHT WASHED STONE
  - D. AIR CONTENT - 4.0 TO 7.0
  - E. SLUMP - 7" +/- 1 INCH
  - F. MICRO FIBER 2 LB. PER CUBIC YARD - SYNTHETIC FIBER
  - G. W/C - 0.45
  - H. MAXIMUM BATCHING TIME FOR THE CONCRETE IS 60 MINUTES.
  - I. CURE THE CONCRETE USING 5 MIL. CLEAR PLASTIC THE DURATION TO BE COVERED IS 3 DAYS
  - J. FINISH: LIGHT BROOM ONLY IN ONE DIRECTION.

**LIST OF DRAWINGS**

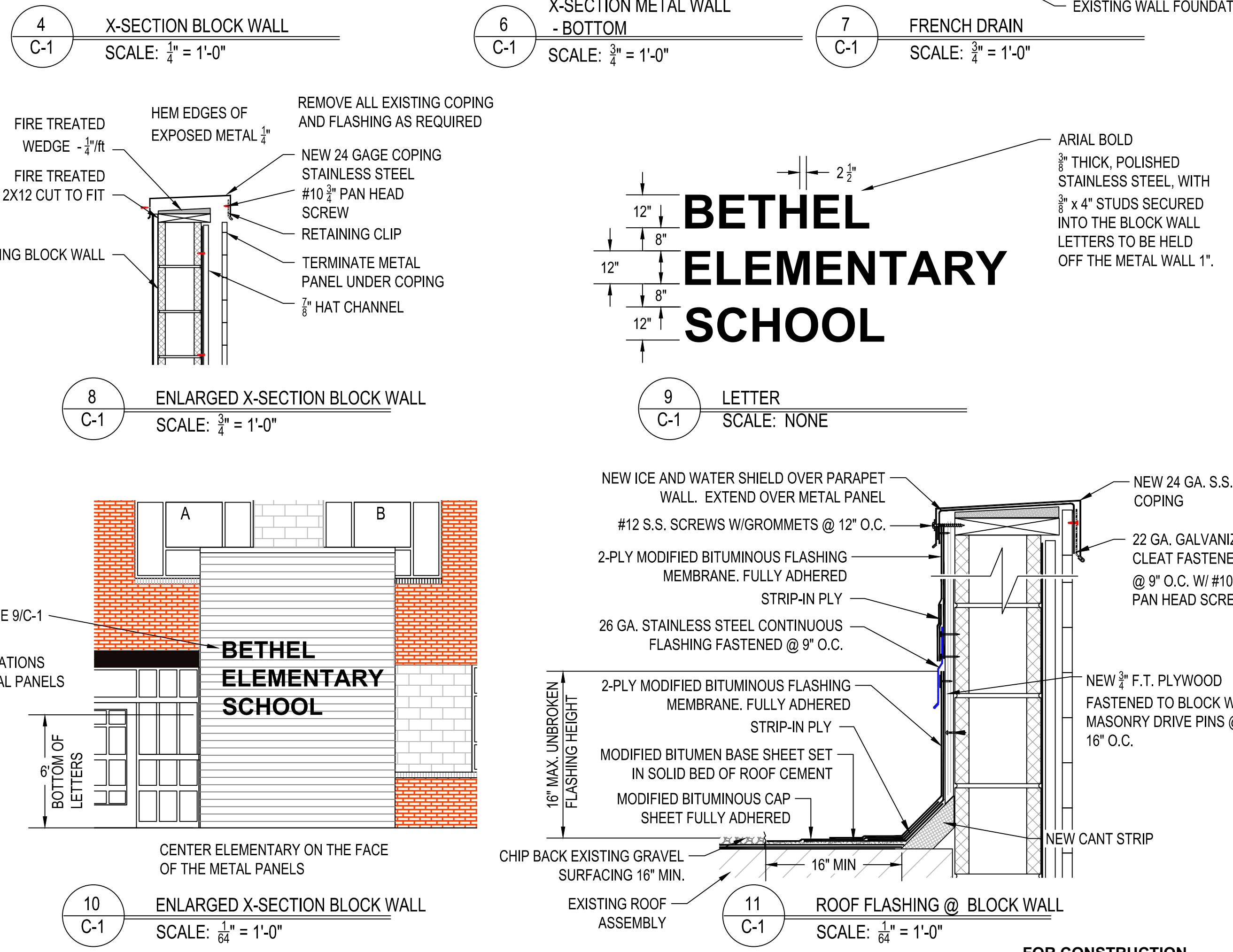
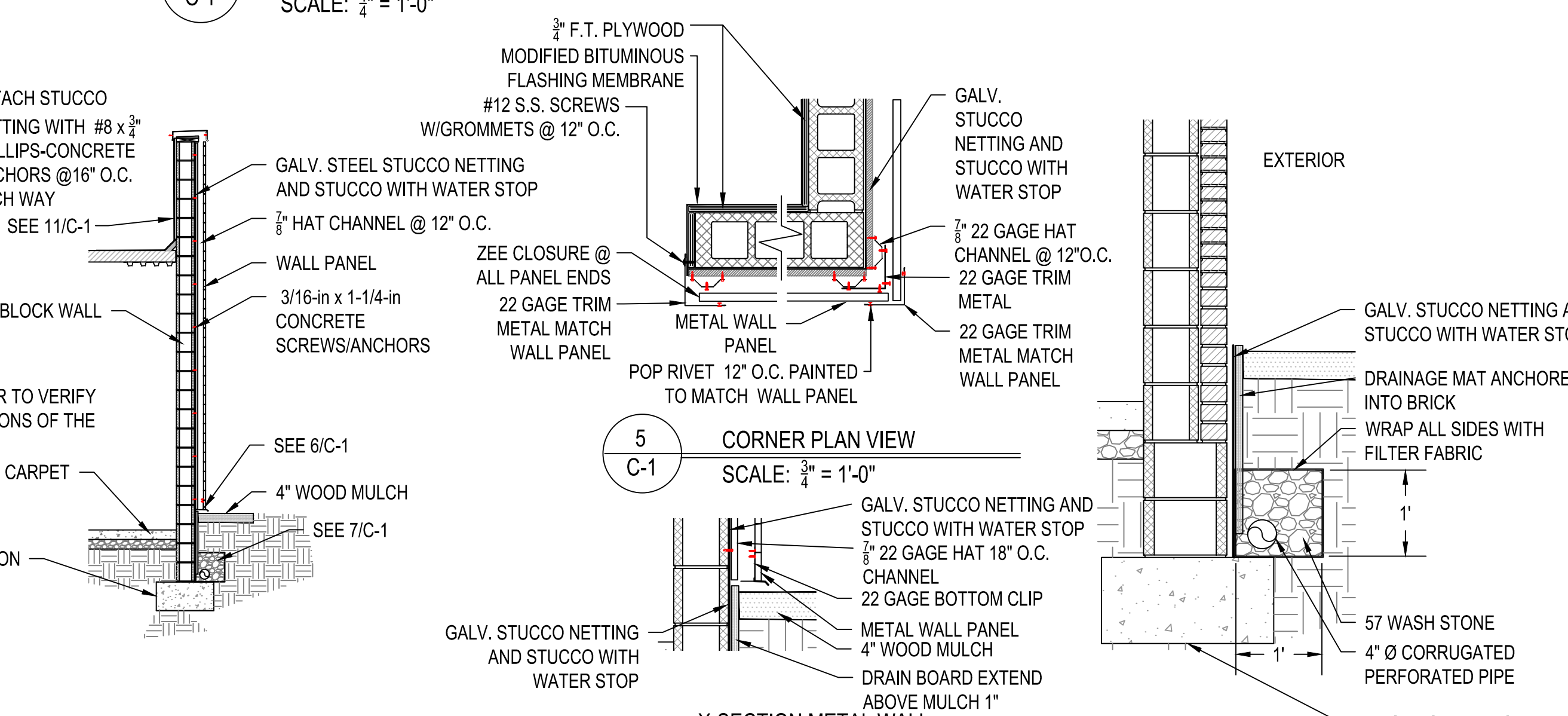
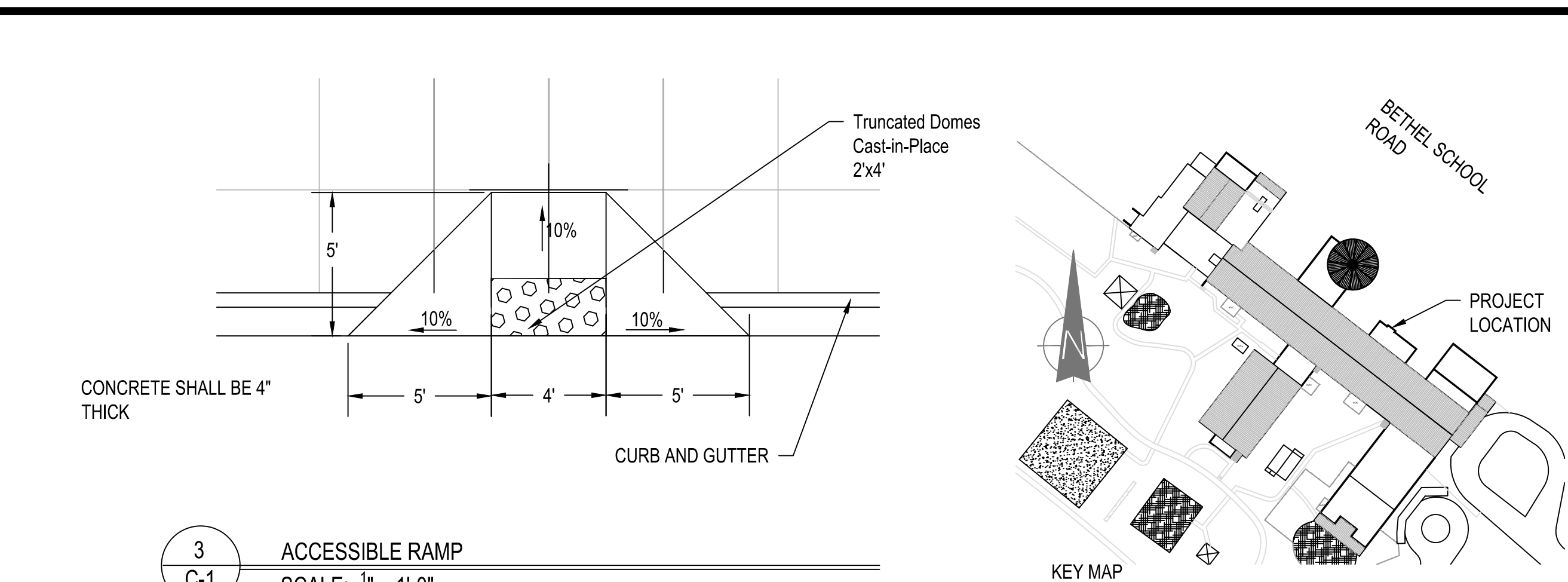
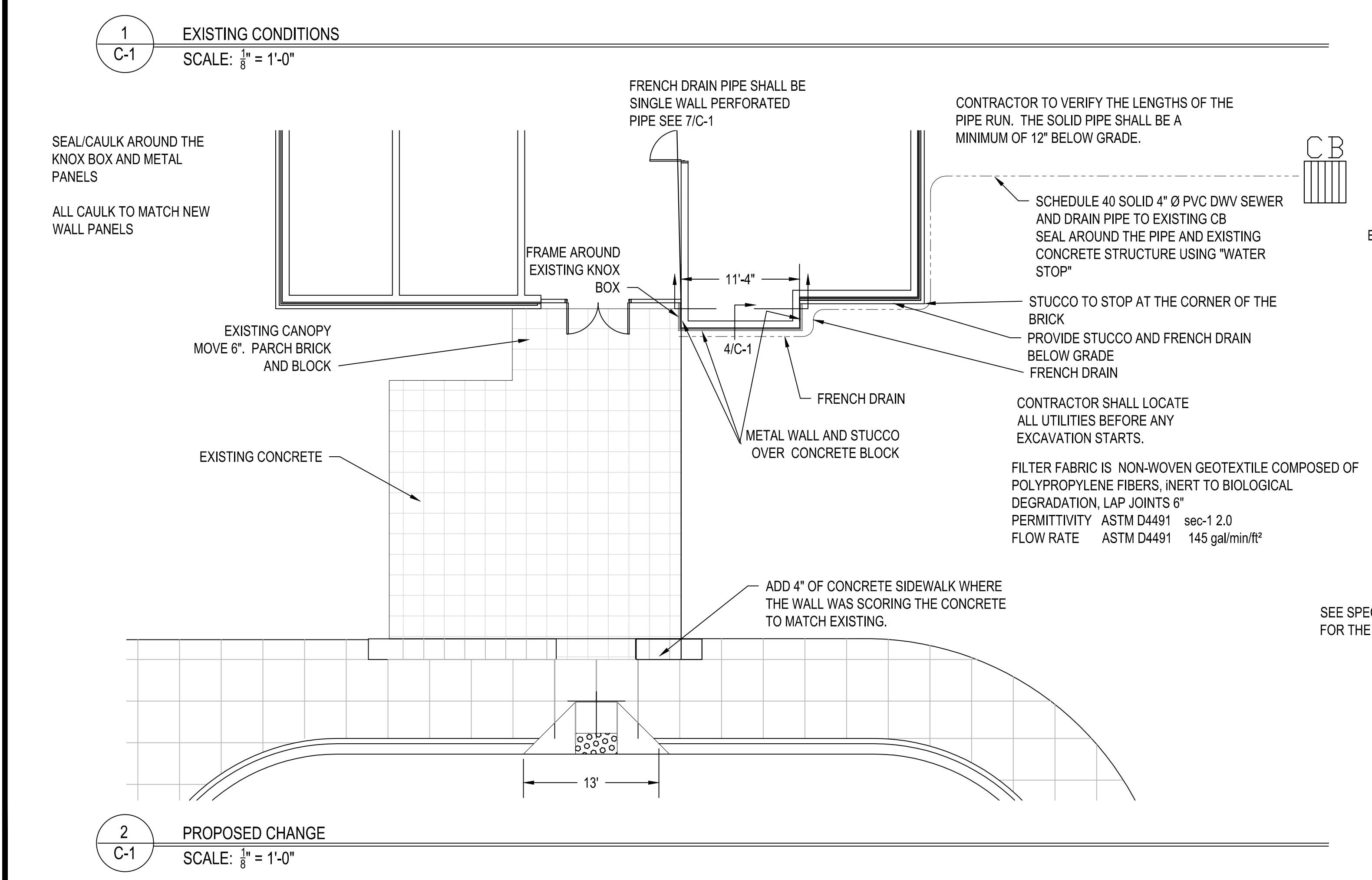
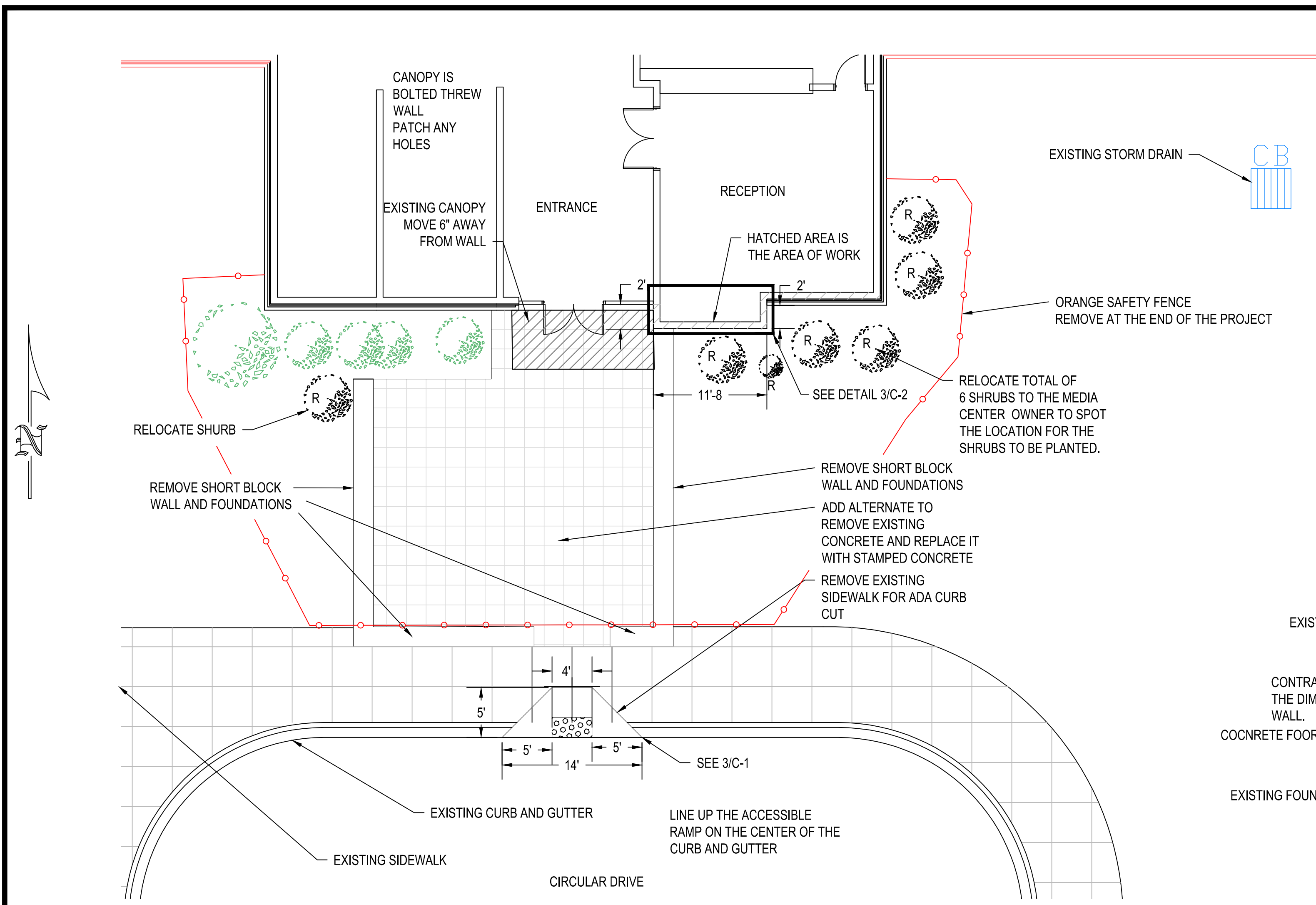
CO-1	COVER SHEET
C-1	SITE/DETAILS
C-2	DETAILS
C-3	DETAILS

MARK	DATE	DESCRIPTION
	0-00-0000	XXXXXXXXXX

CAD DWG FILE:  
DRAWN BY:  
CHK'D BY:  
DATE:  
COPYRIGHT

**COVER SHEET**

CO-1



**WOLF TRAIL**  
ENGINEERING

P-1817  
1001 LANCASTER AVE.  
MONROE, NC 28112  
704-282-0826

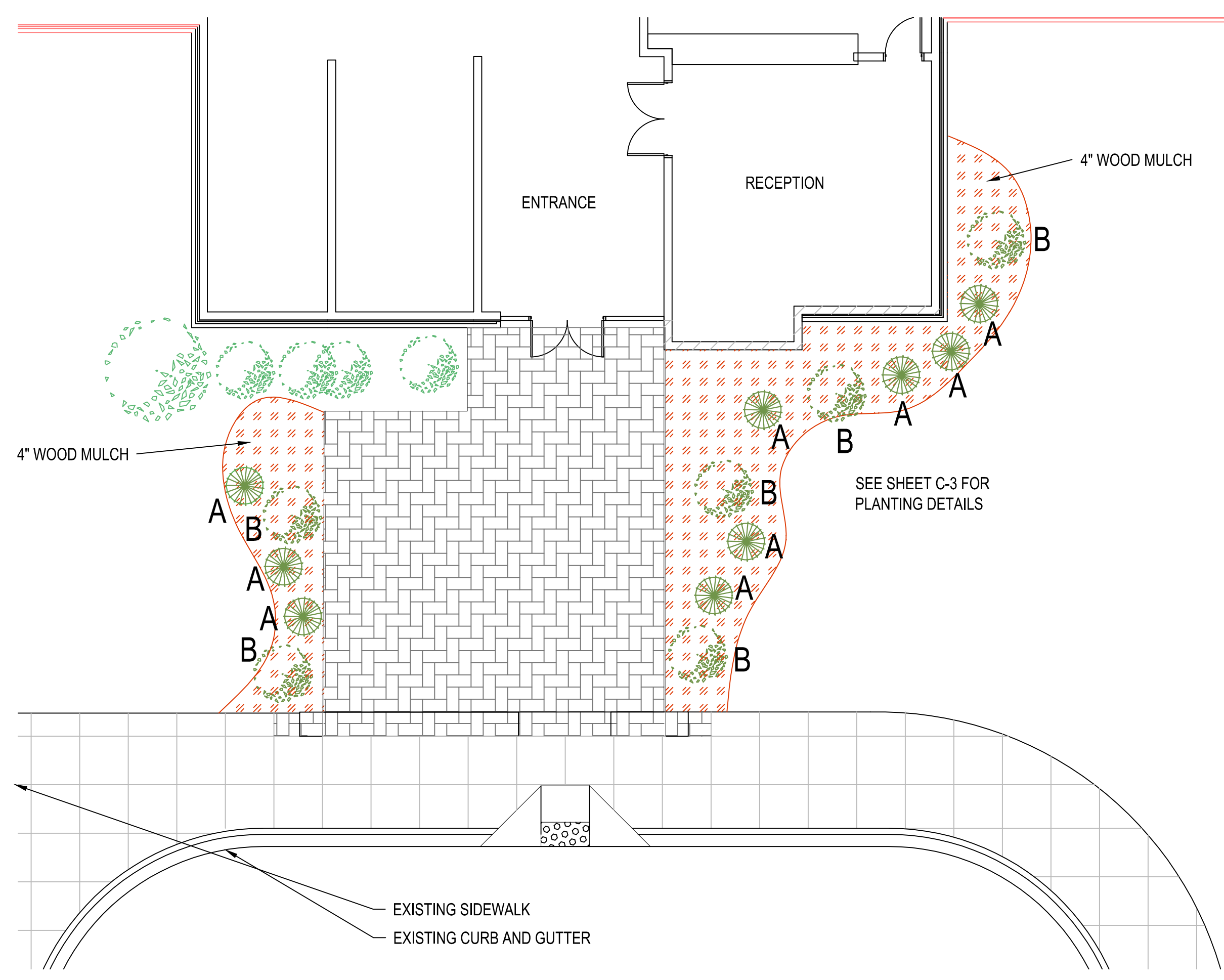
Professional Engineer  
No. 30870  
DUGLAS E. BUCKMAN  
5-19-2023

School Dist of  
Greenville County  
301 E Camperdown Way  
Greenville, SC 29601

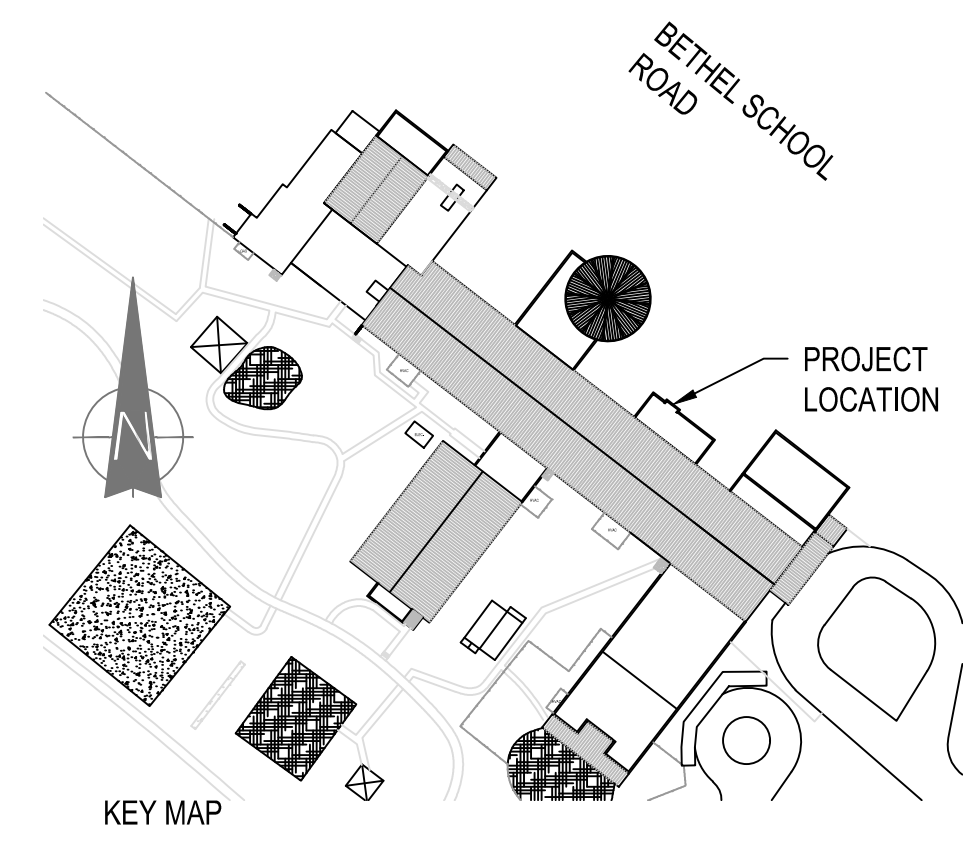
**BETHEL ELEM. SCHOOL**  
111 BETHEL SCHOOL RD  
SIMPSONVILLE, SOUTH CAROLINA  
BUILDING WALL REPAIR

MARK	DATE	DESCRIPTION
	0-00-0000	XXXXXXXXXX

CAD DWG FILE:  
DRAWN BY:  
CHK'D BY:  
DATE:  
COPYRIGHT



PLANTING SCHEDULE						
Mark	Common Name	Botanical Name	Width (Feet)	Height (Feet)	Size	Quantity
A	Blue Pacific Juniper	Juniperus conferta Blue Pacific	3	1	Evergreen 2.5-Quart Pot	9
B	Soft Caress Mahonia	Mahonia eurybracteata 'Soft Caress'	5	3	Evergreen 2-Quart Pot	6

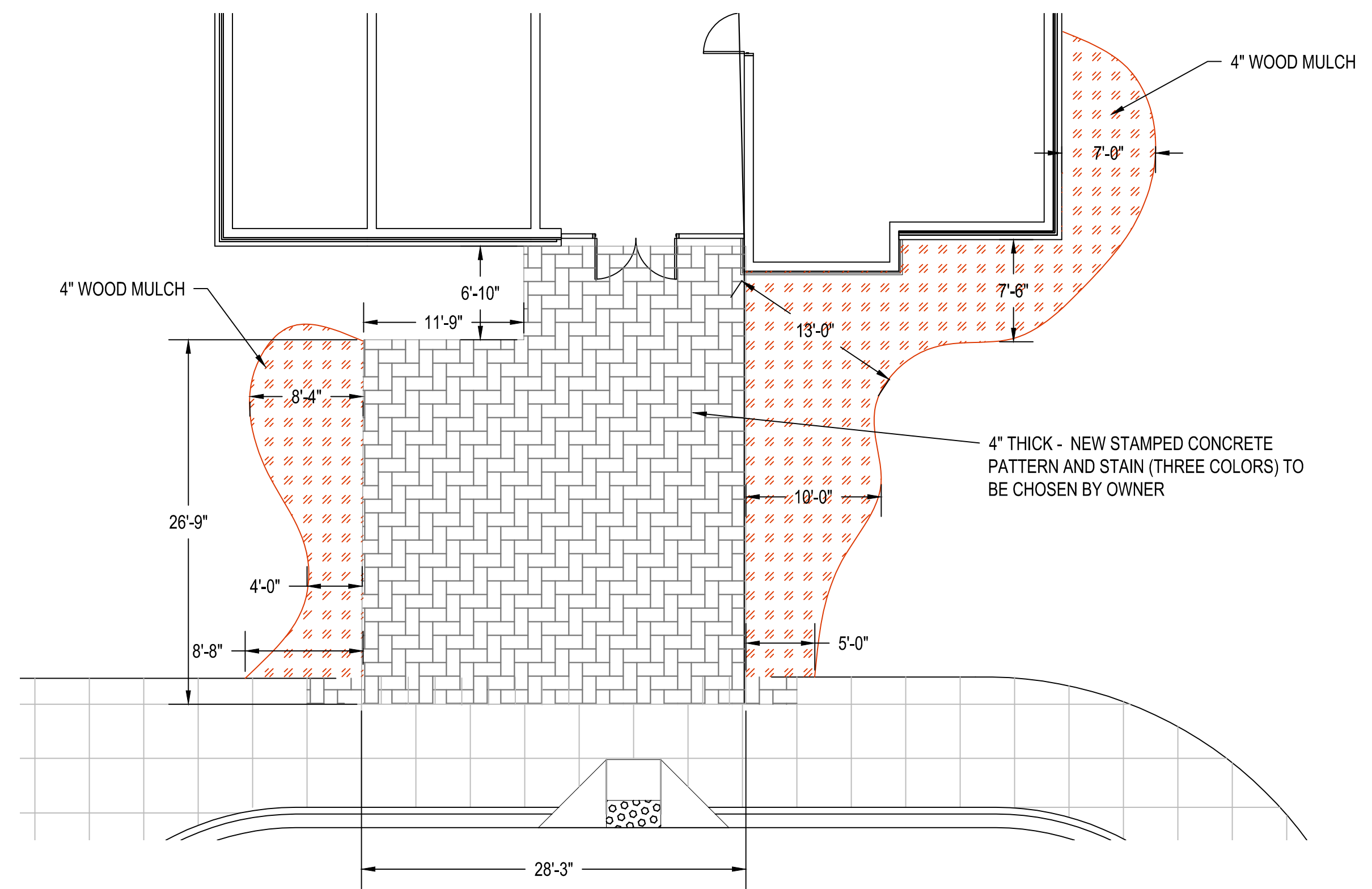


**WOLF TRAIL™**  
ENGINEERING

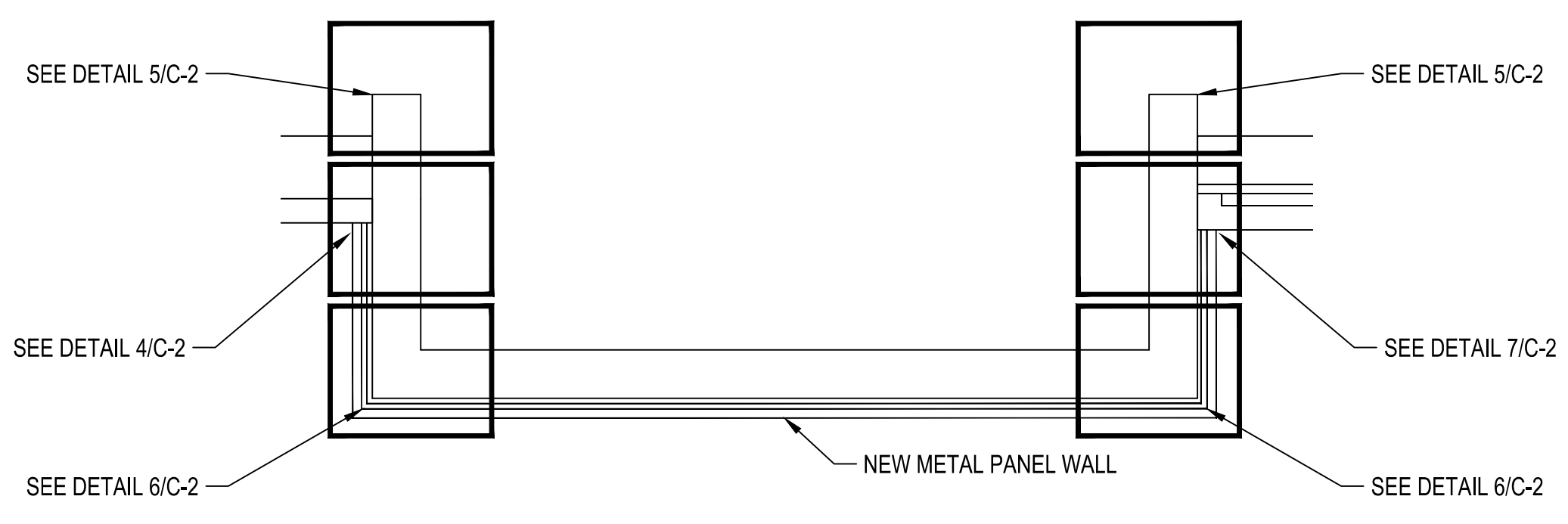
P-1817  
1001 LANCASTER AVE.  
MONROE, NC 28112  
704-282-0826

Professional Engineer  
No. 30870  
S. E. BUCHANAN  
8-19-2023

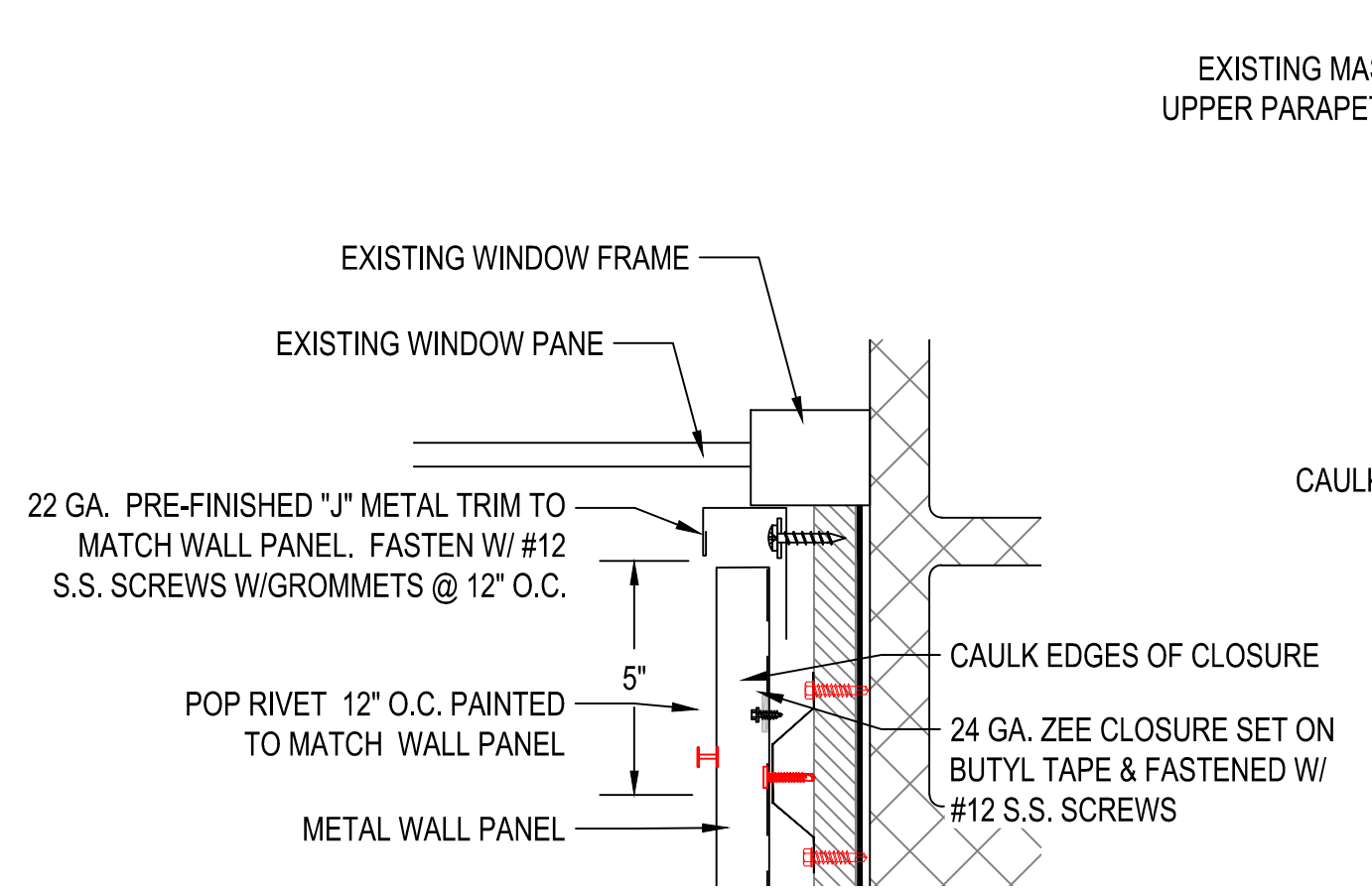
1  
C-2 LANDSCAPE DRAWING  
SCALE: 1/8" = 1'-0"



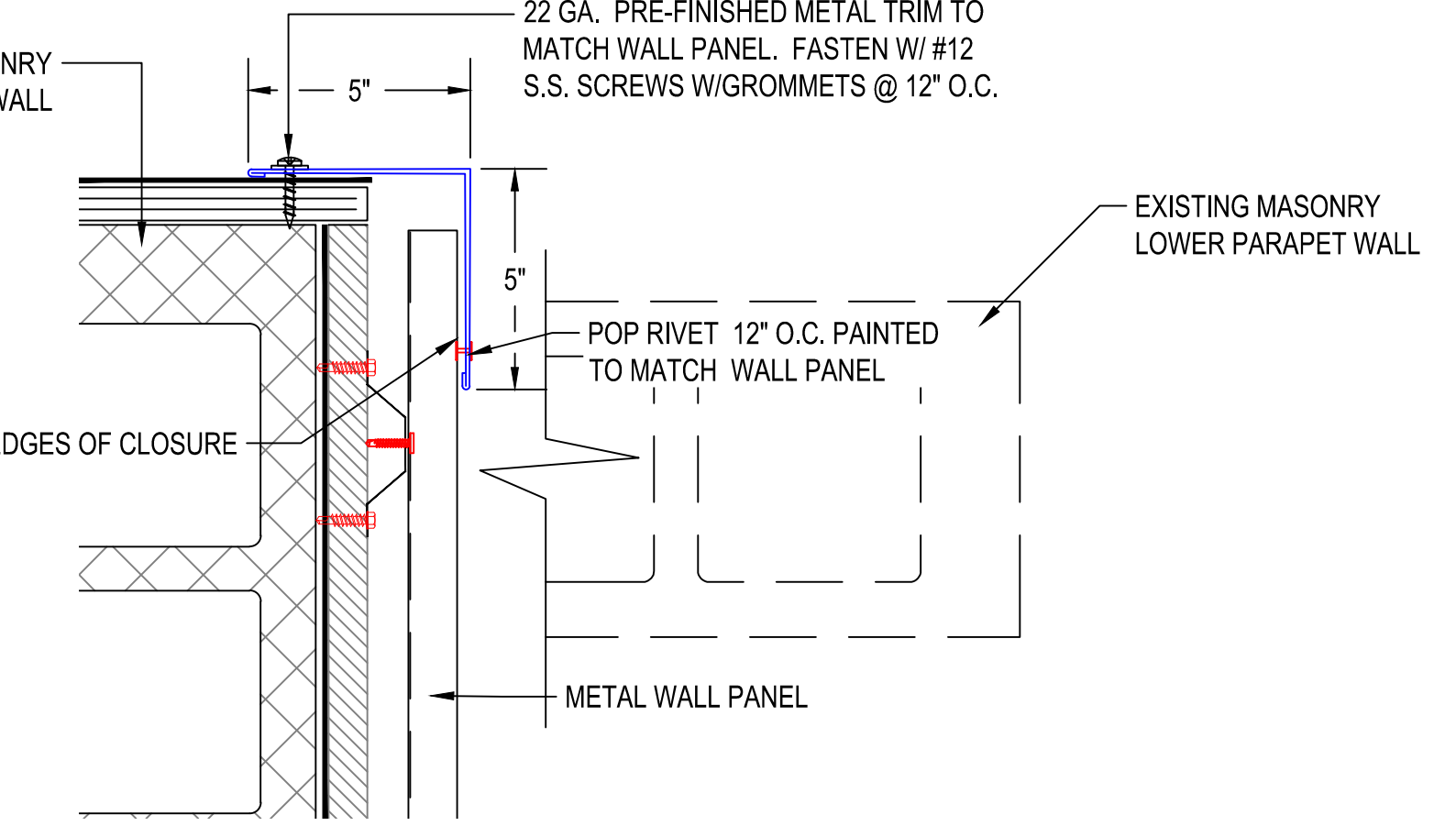
2  
C-2 STAMPED CONCRETE - BASE BID  
SCALE: 1/8" = 1'-0"



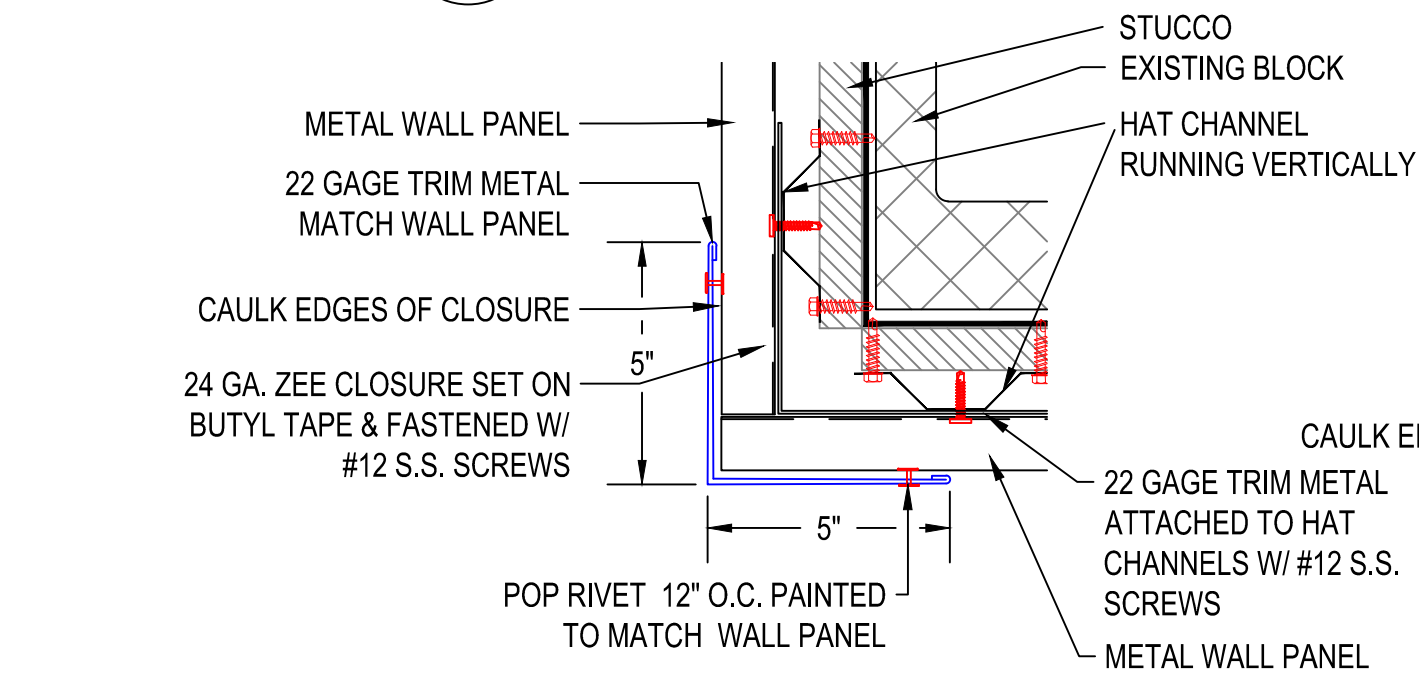
3  
C-2 PANEL TERMINATION LOCATIONS  
SCALE: 1/2" = 1'-0"



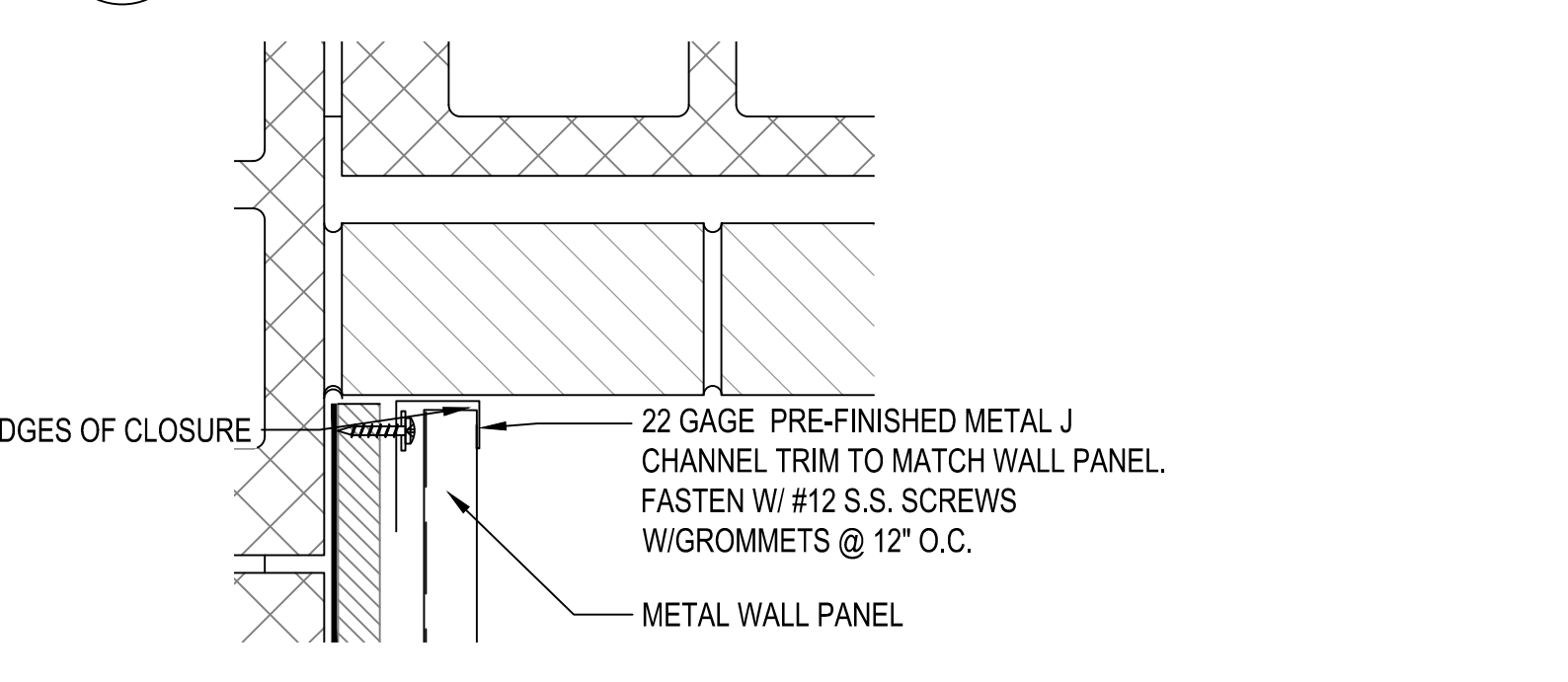
4  
C-2 PANEL END @ WINDOW  
SCALE: 3" = 1'-0"



5  
C-2 PANEL END @ PARAPET WALL  
SCALE: 3" = 1'-0"



6  
C-2 PANEL CORNER  
SCALE: 3" = 1'-0"



7  
C-2 PANEL END @ MASONRY - TYPICAL  
SCALE: 3" = 1'-0"

School Dist of  
Greenville County  
301 E Camperdown Way  
Greenville, SC 29601

**BETHEL ELEM. SCHOOL**  
111 BETHEL SCHOOL RD  
SIMPSONVILLE, SOUTH CAROLINA  
BUILDING WALL REPAIR

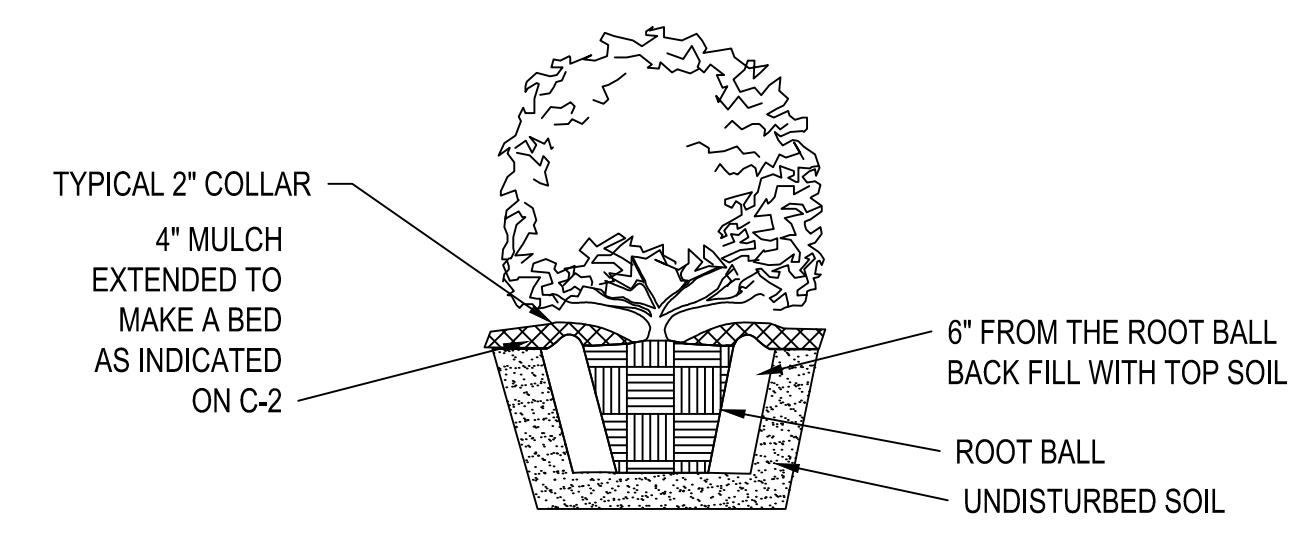
MARK	DATE	DESCRIPTION
	0-00-0000	XXXXXXXXXX

CAD DWG FILE:  
DRAWN BY:  
CHK'D BY:  
DATE:  
COPYRIGHT

**DETAILS**  
SHEET TITLE  
**C-2**  
PAGE NUMBER

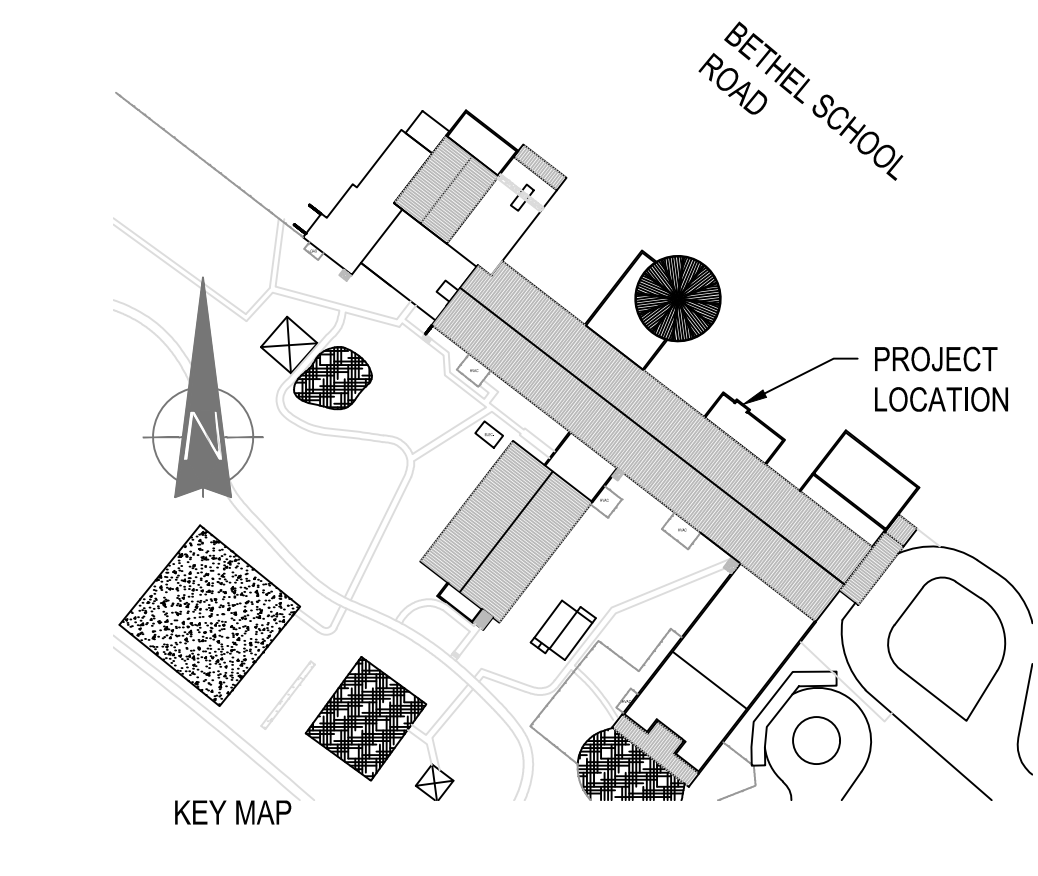
FOR CONSTRUCTION

- NOTES:
- A. SCARIFY THE ROOT MASS OF CONTAINERIZED PLANT MATERIAL
  - B. INSTALL CONTAINERIZED PLANTS AT FINISHED GRADE
  - C. TAMP PLANTING MIX FIRMLY AS PIT IS FILLED AROUND EACH PLANT'S BALL
  - D. SOAK EACH PLANT BALL AND PIT IMMEDIATELY AFTER INSTALLATION
  - E. ADD ONE CUP OF 10-10-10 FERTILIZE BEFORE WATERING.



TOP SOIL SHALL BE 60% ORGANIC MATERIAL AND 40% SANDY/CLAY SOIL SHALL BE FREE OF ROCKS, OR TRASH

1 PLANTING SHRUB DETAIL  
C-3 SCALE: NONE



**WOLF TRAIL™**  
ENGINEERING  
P-1817  
1001 LANCASTER AVE.  
MONROE, NC 28112  
704-282-0826



**School Dist of Greenville County**  
301 E Camperdown Way  
Greenville, SC 29601

**BETHEL ELEM. SCHOOL**  
111 BETHEL SCHOOL RD  
SIMPSONVILLE, SOUTH CAROLINA  
BUILDING WALL REPAIR

MARK	DATE	DESCRIPTION
	0-00-0000	XXXXXXXXXX

CAD DWG FILE:  
DRAWN BY:  
CHK'D BY:  
DATE:  
COPYRIGHT

**DETAILS**  
SHEET TITLE

**C-3**  
PAGE NUMBER

FOR CONSTRUCTION