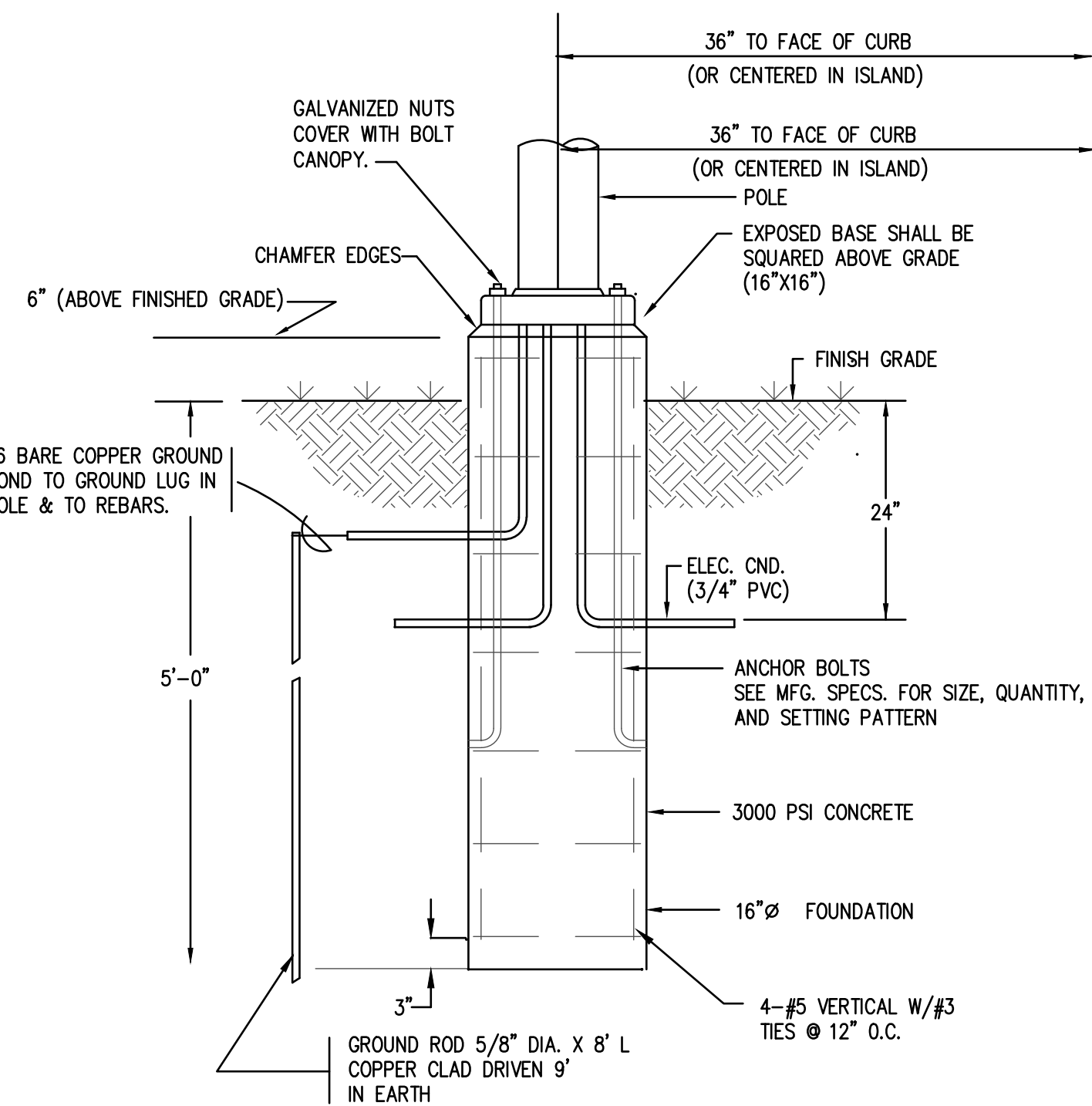


GENERAL LIGHTING NOTES:

1. MANUFACTURERS & NUMBERS ARE LISTED TO ESTABLISH QUALITY ONLY AND NOT TO LIMIT COMPETITION. TEN DAYS PRIOR TO BIDDING, SUBSTITUTIONS ARE ALLOWED SUBJECT TO SUBMITTAL DATA, PHOTOMETRICS & ENGINEERS APPROVAL AS REQUIRED BY SPECIFICATIONS.
2. ALL FIXTURES TO BE U.L. LISTED. ALL EXTERIOR FIXTURES SHALL HAVE U.L. WET LABEL OR DAMP LABEL AS REQUIRED BY LOCATION. CONTRACTOR SHALL VERIFY BEFORE INSTALLING FIXTURE.
3. CONTRACTOR SHALL PROVIDE ALL MOUNTING ACCESSORIES & HARDWARE REQUIRED FOR A COMPLETE SYSTEM.

FIXTURE TYPE	FIXTURE DESCRIPTION	ACCEPTABLE MANUFACTURERS	LAMPS	FIXTURE WATTAGE	VOLTAGE
EL	EXTERIOR WEATHERPROOF EMERGENCY EXTERIOR LED LIGHT FIXTURE WITH PE CELL.	HUBBELL # SG1-20-4K7-FT-UNV-COLOR-CS	BY MANUFACTURER	12	MULTI
EX	UNIVERSAL MOUNTED EXIT SIGN WITH RED LED ON WHITE HOUSING, AC ONLY, DIFFUSER LENS, SPEC GRADE.	DUAL LITE # EVEURW	BY MANUFACTURER	10	MULTI
LP1	POLE MOUNTED, SINGLE ARM LED AREA LIGHTING FIXTURE WITH 25' ROUND TAPERED POLE, FINISH BY ARCHITECT.	FIXTURE BEACON # VP-1-160L-115-4K7-2-VOLT-A-FINISH-7PR-NXOFM-1R1D-UNV POLE BEACON # RTAB25-70B-1-B3	LED (15000 LUMENS)	115	277
TA	RECESSED 2X4 LED FIXTURE WITH CENTER SHIELD, 0-10V DIMMING.	COLUMBIA # LCAT24-40HLG-EDU	LED	50	MULTI



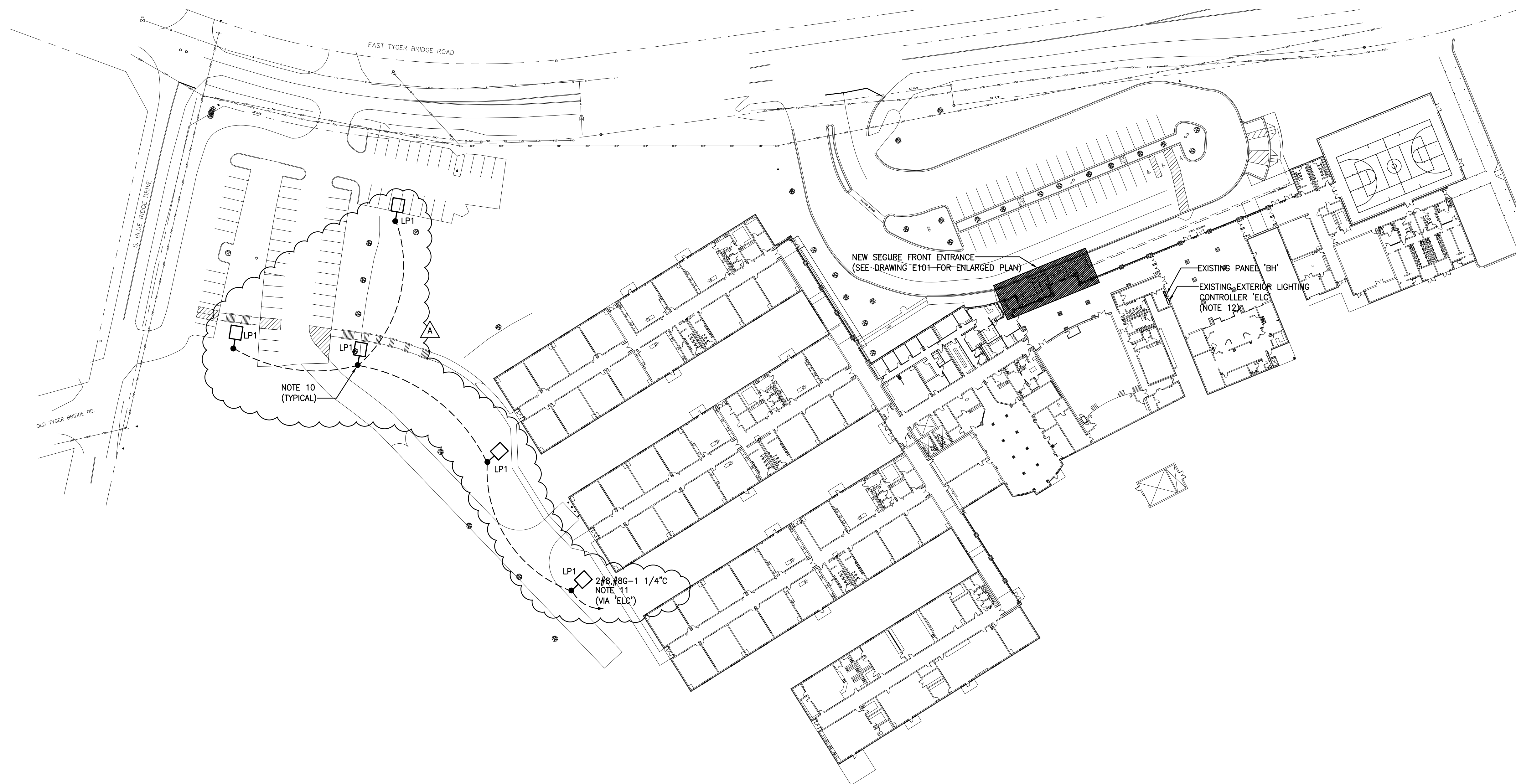
1. CONTRACTOR SHALL VERIFY SITE LAYOUT WITH ARCHITECTURAL, CIVIL, AND LANDSCAPE PLANS AND MAKE MINOR ADJUSTMENTS TO FIXTURE PLACEMENT TO ACCOMMODATE DRAINAGE, PLANTINGS, ETC.
2. INSTALL POLES A MINIMUM OF 3'-0" BACK FROM CURBS. POLES SHALL BE INSTALLED COMPLETE PER MANUFACTURERS RECOMMENDATIONS.
3. NOT USED.
4. CONTRACTOR SHALL LOCATE ALL EXISTING UTILITY LINES PRIOR TO ANY UNDERGROUND DIGGING OR TRENCHING.
5. INSTALL ALL CONDUIT AT DEPTHS AS SPECIFIED IN TABLE 300.5 IN THE NEC.
6. CONTRACTOR SHALL COORDINATE HEAVILY WITH ALL OTHER DISCIPLINES DURING SITE EXCAVATION TO INSURE THERE ARE NO CONFLICTS WITH UTILITY CONDUIT ROUTING.
7. CONTRACTOR WILL BE REQUIRED TO MEET WITH LOCAL WATER, GAS, CABLE, COMMUNICATIONS, AND ELECTRICAL COMPANIES PRIOR TO INSTALLING CONDUITS. ROUTING OF CONDUITS, SLEEVE LOCATIONS UNDER PAVEMENT, PULL BOX REQUIREMENTS, ETC. TO BE COORDINATED WITH EACH UTILITY.
8. CONTRACTOR SHALL MAINTAIN FLAGGING FOR CONDUIT LOCATIONS AND HAND HOLES THROUGHOUT CONSTRUCTION.
9. SCHEDULE 40 PVC SHALL BE USED (3/4" MIN) TRANSITIONING TO RGC UNDER PAVED OR HIGH TRAFFIC AREAS AND IN AREAS WHERE CONDUIT IS STUBBED UP INTO BUILDING AND/OR AT EQUIPMENT.
10. PROVIDE CONCRETE POLE BASE PER DETAIL ON THIS DRAWING.
11. FURNISH AND INSTALL 20A/1P BREAKER IN EXISTING PANEL 'BH' TO FEED NEW EXTERIOR LIGHTING CIRCUIT. ROUTE CIRCUIT THROUGH EXISTING EXTERIOR LIGHTING CONTROLLER 'ELC'.
12. PROVIDE ADDITIONAL CONTACTS IN EXISTING EXTERIOR LIGHTING CONTROLLER IF REQUIRED.

D1 LIGHTING FIXTURE SCHEDULE

D2 CONCRETE BASE DETAIL

N.T.S.

D3 PLAN NOTES



A1 ELECTRICAL SITE PLAN

50'

REVISIONS

DATE	MARK	DESCRIPTION
14 APR 2023	0	ISSUE FOR 05% CD REVIEW - ISSUE FOR BIDS
11 MAY 2023	A	ADDENDUM #1

MEMBERS: AMERICAN INSTITUTE OF ARCHITECTS
NCARB CERTIFICATES 4257, 22753, 44627 & 44714
ARD, WOOD, HOLCOMBE & SLATE, INC.
ARCHITECTS AND PLANNERS
620 N. MAIN STREET | SUITE 104
GREENVILLE, SOUTH CAROLINA 29601
PHONE: 864/242-5450
WWW.AWHSARCHITECTS.COM

ELECTRICAL SITE PLAN
HANDICAP ACCESSIBLE UPGRADES FOR
BLUE RIDGE MIDDLE
SCHOOL
GREER, SOUTH CAROLINA

DRAWN JDJ
JOB 23-027
DATE 14 APR 2023

E-201
DRAWING NUMBER

AWHS
ARCHITECTS

THIS DRAWING IS AN INSTRUMENT OF SERVICE AND REMAINS THE PROPERTY OF ARD, WOOD, HOLCOMBE & SLATE, INC. ARCHITECTS AND PLANNERS. IT MAY NOT BE REPRODUCED IN ANY MANNER WITHOUT WRITTEN PERMISSION. © COPYRIGHT 2022