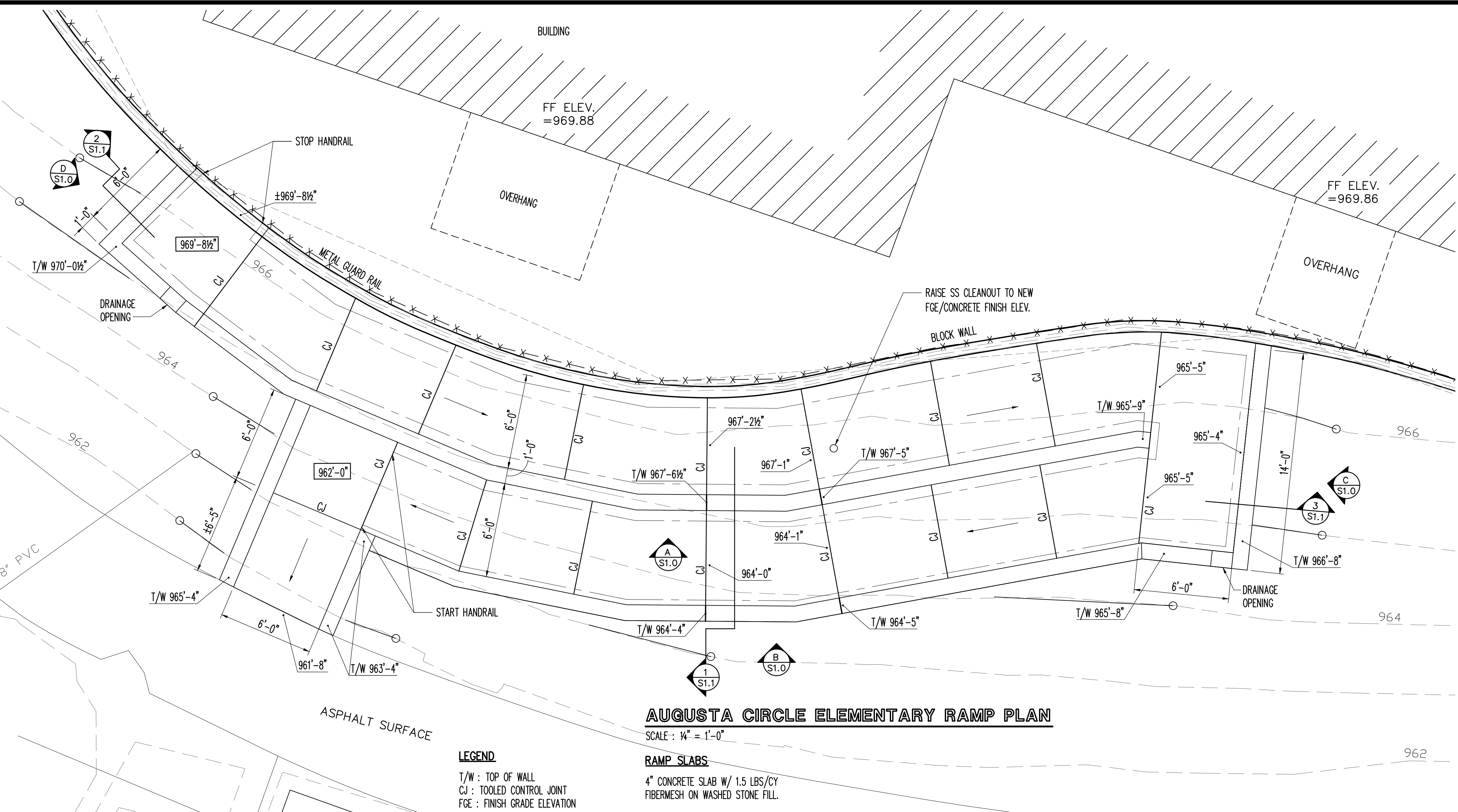


THIS DRAWING IS A DOCUMENT OF SERVICE AND SHALL NOT BE REPRODUCED, ALTERED OR REUSED IN WHOLE OR IN PART WITHOUT THE WRITTEN PERMISSION OF THE ENGINEER. THESE DRAWINGS ARE PROTECTED BY THE U.S. GOVERNMENT COPYRIGHT LEGISLATION © COPYRIGHT 2020, ROYAL ENGINEERING, INC. ALL RIGHTS RESERVED.



AUGUSTA CIRCLE ELEMENTARY RAMP PLAN

SCALE: 1/4" = 1'-0"

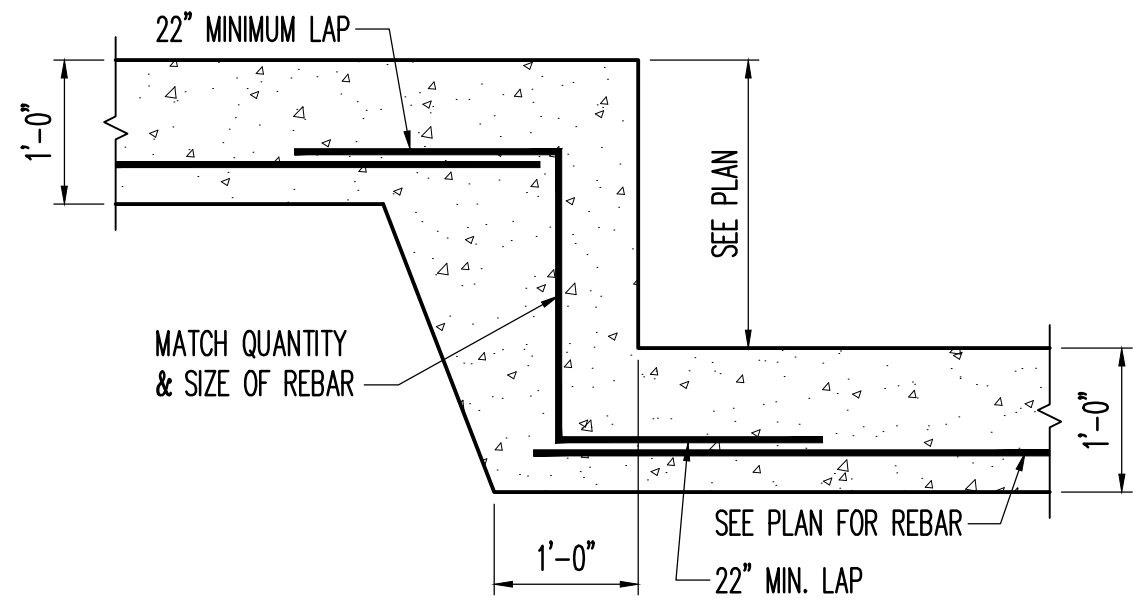
LEGEND
 T/W : TOP OF WALL
 CJ : TOOLED CONTROL JOINT
 FGE : FINISH GRADE ELEVATION

RAMP SLABS
 4" CONCRETE SLAB W/ 1.5 LBS/CY
 FIBERMESH ON WASHED STONE FILL.

- FOUNDATION, RETAINING WALL, & SLAB NOTES**
- 1 THE FOUNDATION DESIGN IS BASED ON AN ASSUMED ALLOWABLE SOIL BEARING PRESSURE OF 2,500 PSF.
 - 2 ALL FOOTINGS SHALL BE PLACED ON UNDISTURBED SOIL OR COMPACTED FILL CONFORMING TO 95% STD. DENSITY. ALL FOOTING EXCAVATIONS SHALL BE EXAMINED BY A GEOTECHNICAL ENGINEER PRIOR TO PLACEMENT OF CONCRETE TO VERIFY SOIL BEARING PRESSURE.
 - 3 STEP FOOTINGS AS REQUIRED FOR GRADE CHANGES. CONTINUE HORIZONTAL REINFORCING BARS THRU STEPS. SEE DETAIL.
 - 4 ALL CONCRETE SHALL OBTAIN A COMPRESSIVE STRENGTH OF 3,000 PSI AT 28 DAYS. ALL CONCRETE SHALL BE POURED WITH A SLUMP OF 2 - 5 INCHES. IF ADDITIONAL SLUMP UP TO 8" IS DESIRED, A SUPERPLASTICIZER ADMIXTURE MAY BE ADDED AT THE JOBSITE.
 - 5 THE CONTRACTOR SHALL BE RESPONSIBLE FOR ANY METHODS REQUIRED TO PREVENT CONCRETE FROM FREEZING AT LEAST 24 HOURS AFTER PLACEMENT IN ACCORDANCE WITH ACI 306. A NON-CHLORIDE ACCELERATOR UP TO 2% BY WEIGHT OF CEMENT MAY BE USED.
 - 6 REINFORCING BARS SHALL BE ASTM A615 GRADE 60. ALL CONTINUOUS BARS SHALL BE TURNED AND LAPPED AT CORNERS AND INTERSECTING FOOTINGS & WALLS. LAP SPLICES SHALL BE CLASS A PER ACI 318 (#4 - 22").
 - 7 ALL CONCRETE WORK SHALL BE DONE IN ACCORDANCE WITH ACI 318.
 - 8 PLACE CONCRETE IN THE WALL AS NEAR AS POSSIBLE TO IT'S FINAL LOCATION TO AVOID AGGREGATE SEGREGATION. AVOID CONCRETE FREE FALLING MORE THAN FOUR FEET.
 - 9 BACKFILL MATERIAL SHALL BE PLACED IN 8" LIFTS AND COMPACTED WITH HAND OPERATED EQUIPMENT. THE USE OF HEAVY EQUIPMENT FOR COMPACTION OF THE BACKFILL IS NOT ALLOWED ADJACENT TO THE WALL FOR A HORIZONTAL DISTANCE EQUAL TO THE HEIGHT OF THE WALL.
 - 10 ALLOW WALLS TO CURE SEVEN (7) DAYS PRIOR TO BACKFILLING.
 - 11 FIBERMESH REINFORCEMENT SHALL BE 1/2" OR 3/4" COLLATED POLYPROPYLENE FIBERS MIXED WITH THE CONCRETE AT READY MIX PLANT.
 - 12 BRICK TIES SHALL BE DW-10 BY H&B. SPACE TIES AT 16" V & 24" H. FASTEN TIES TO WALL W/ TAPON SCREWS.

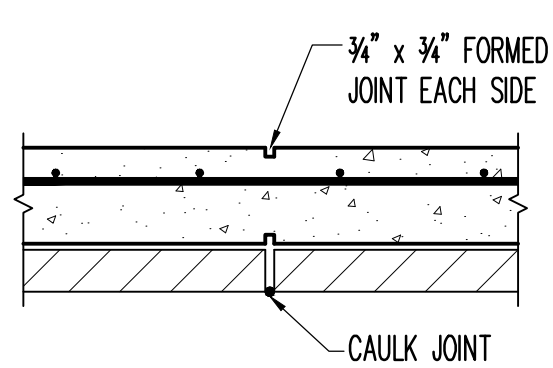
RETAINING WALL DESIGN CRITERIA

ASSUMED GEOTECHNICAL PROPERTIES:
 ALLOWABLE SOIL BEARING PRESSURE : 2,500 PSF
 COEFFICIENT OF FRICTION, CONCRETE-TO-SOIL : 0.50
 INTERNAL ANGLE OF FRICTION : 28 DEGREES
 EQUIVALENT ACTIVE LATERAL EARTH PRESSURE : 40 PCF
 PASSIVE SOIL PRESSURE : 300 PCF
 UNIT WEIGHT OF SOIL : 110 PCF



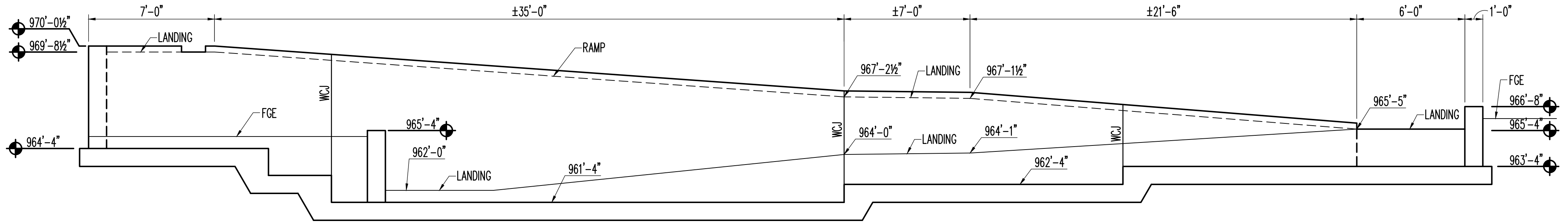
STEP FOOTING DETAIL

SCALE: 3/4" = 1'-0"



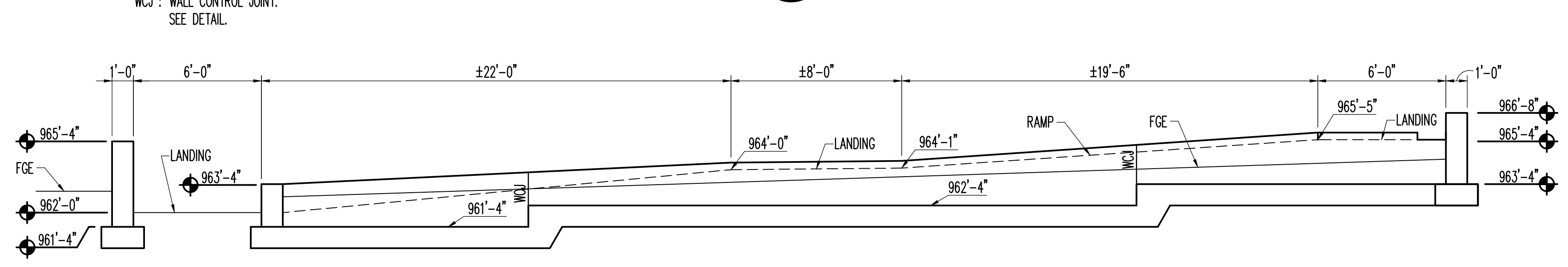
WALL CONTROL JOINT DETAIL

SCALE: 3/4" = 1'-0"

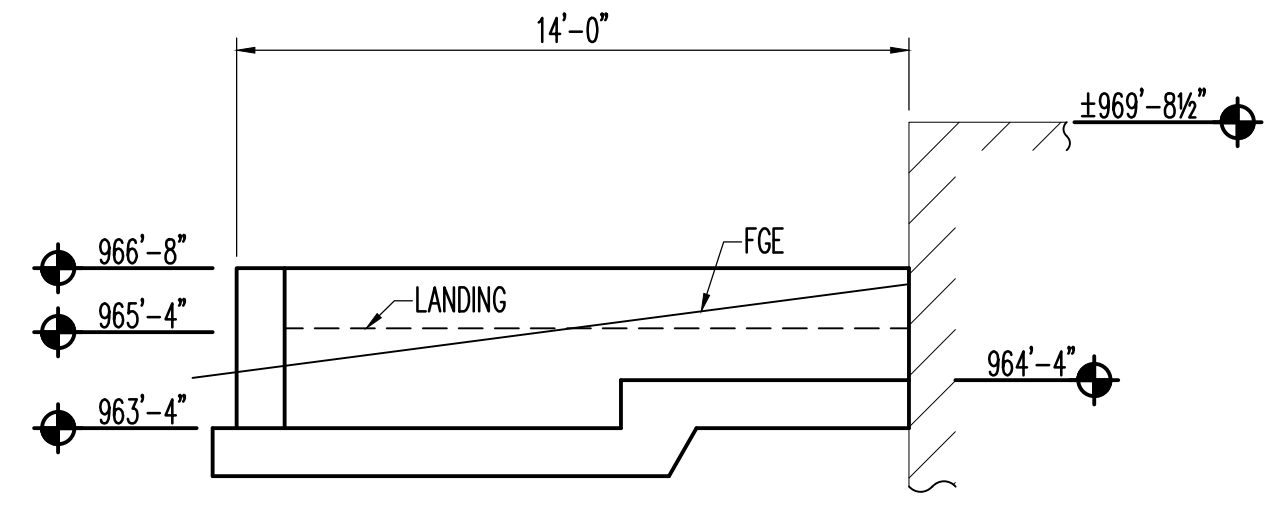


ELEVATION A
 SCALE: 1/4" = 1'-0"

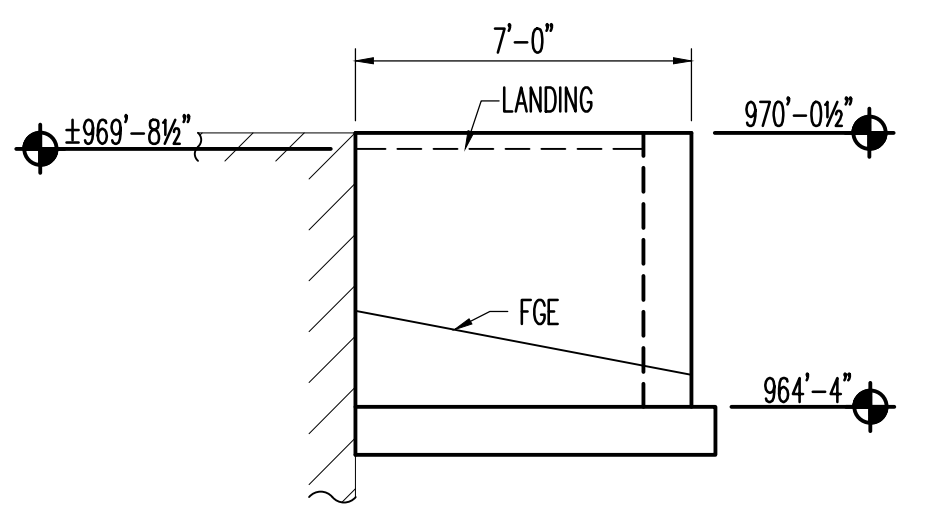
LEGEND
 WCJ : WALL CONTROL JOINT.
 SEE DETAIL.



ELEVATION B
 SCALE: 1/4" = 1'-0"



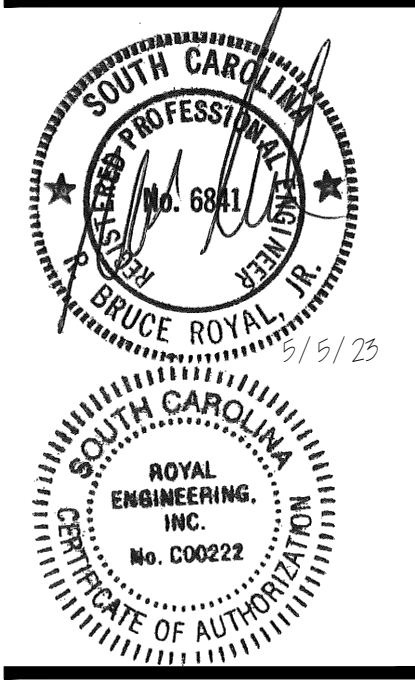
ELEVATION C
 SCALE: 1/4" = 1'-0"



ELEVATION D
 SCALE: 1/4" = 1'-0"

REI
 ROYAL
 ENGINEERING
 INC.
 P.O. BOX 17828
 GREENVILLE, S.C.
 29606
 (864) 235-4425
 FAX 864-235-1330
 royaleng@royalenginc.com

| NO. | REVISIONS |
|-----|-----------|
| | |
| | |
| | |
| | |

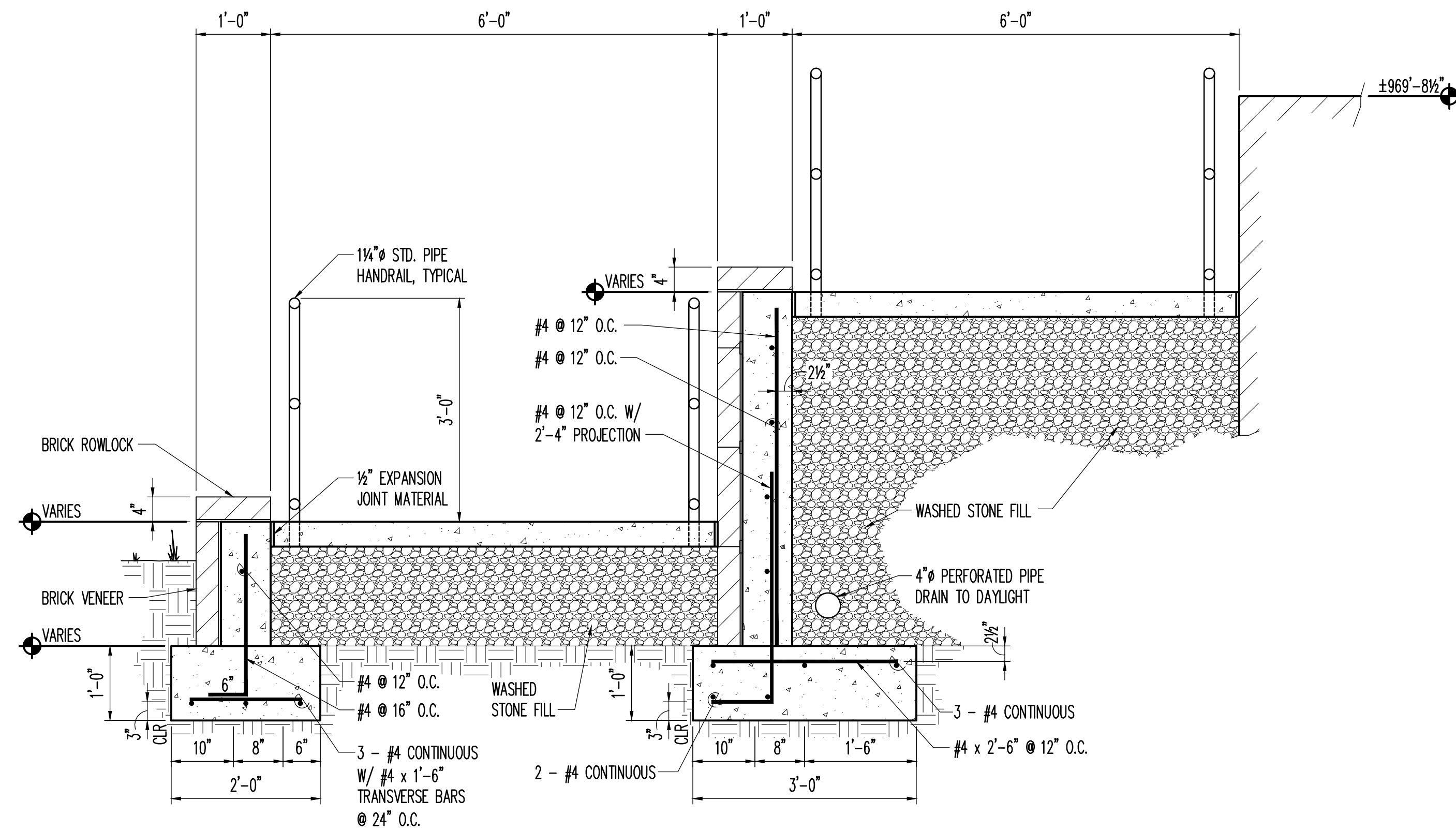


RAMP PLAN, ELEVATIONS, & DETAILS
 FOR
AUGUSTA CIRCLE
 GREENVILLE, SOUTH CAROLINA

| | |
|---------|--------|
| DRAWN | DS |
| CHECKED | BR |
| DATE | 5-5-23 |
| SCALE | NOTED |
| JOB NO. | 23-084 |
| SHEET | |

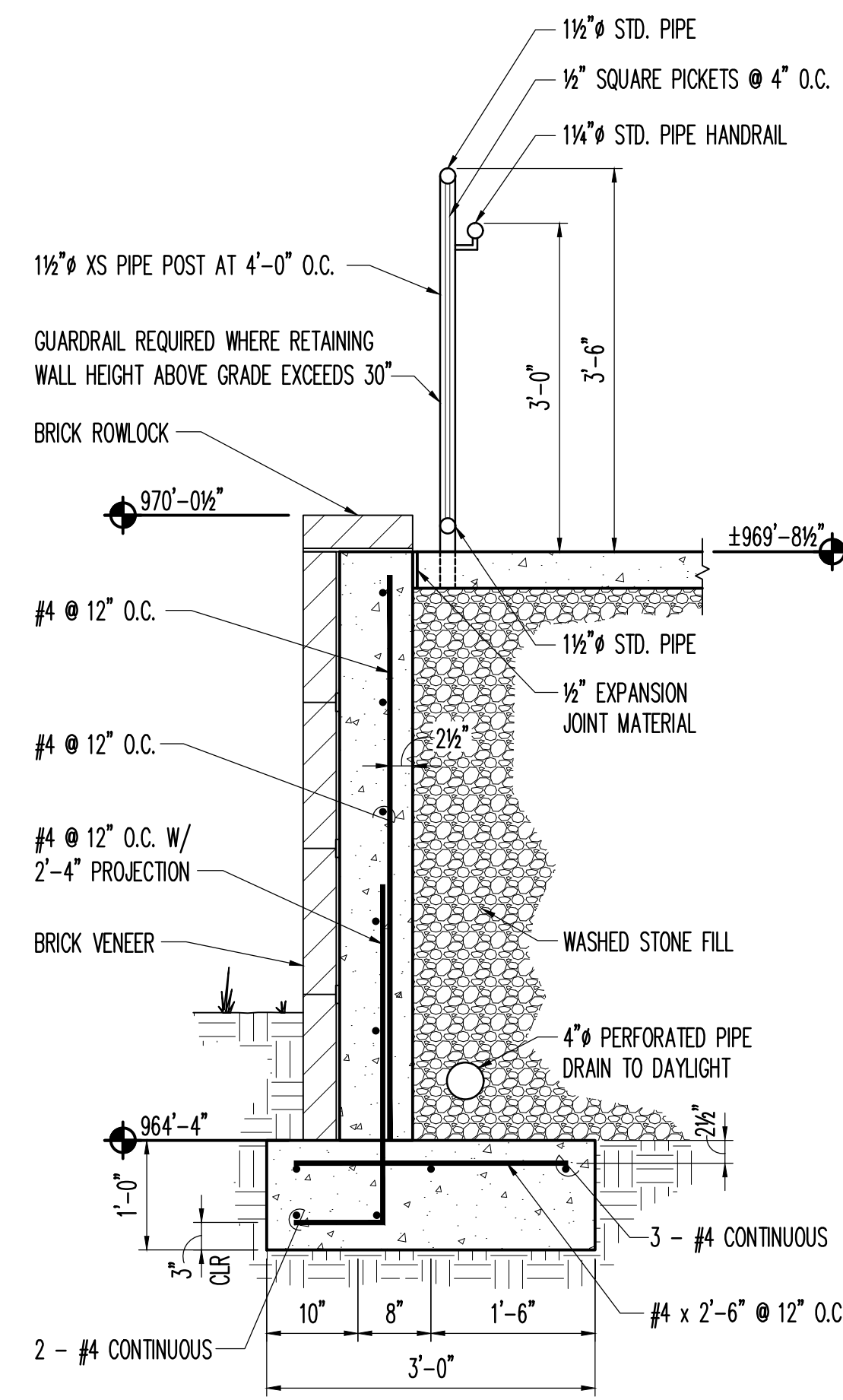
\$1.0

THIS DRAWING IS A DOCUMENT OF SERVICE AND SHALL NOT BE REPRODUCED, ALTERED OR REUSED IN WHOLE OR IN PART WITHOUT THE WRITTEN PERMISSION OF THE ENGINEER. THESE DRAWINGS ARE PROTECTED BY THE U.S. GOVERNMENT COPYRIGHT LEGISLATION © COPYRIGHT 2020, ROYAL ENGINEERING, INC. ALL RIGHTS RESERVED

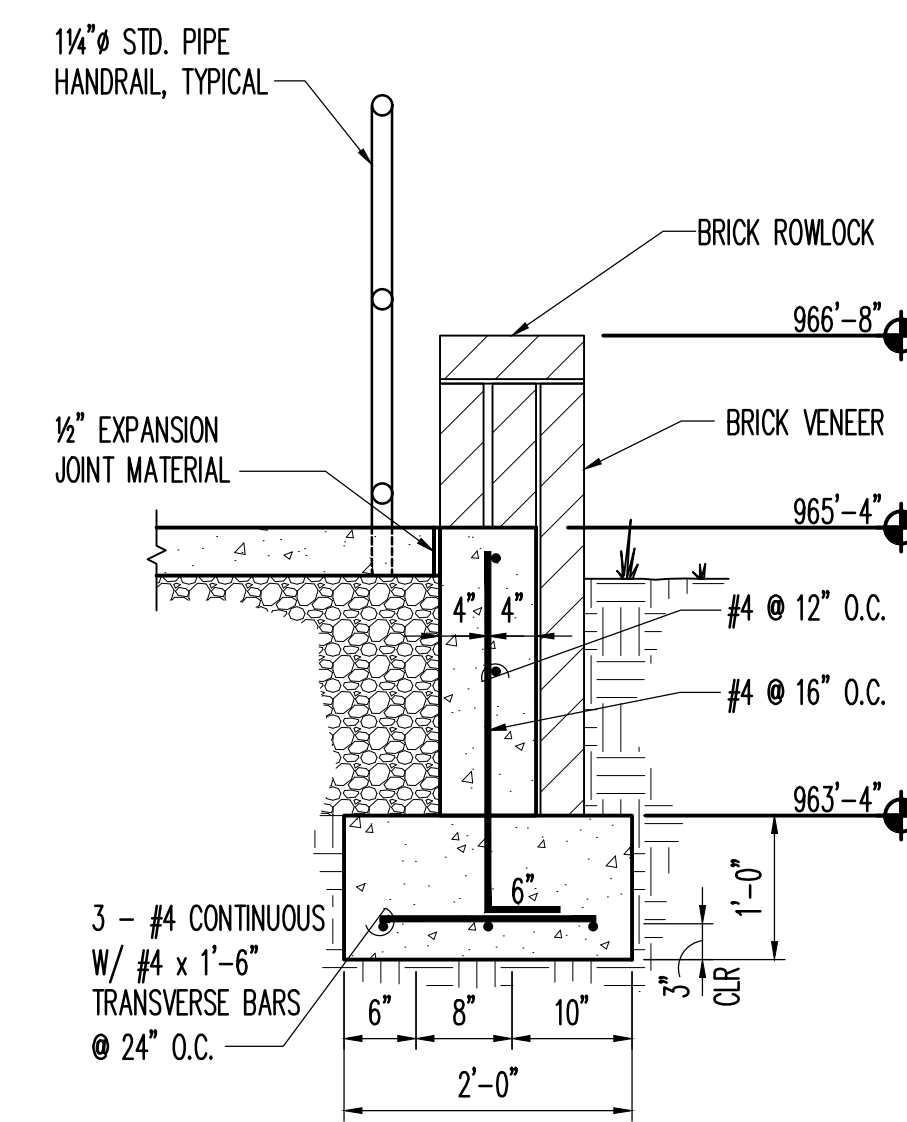


SECTION 1
SCALE: 3/4" = 1'-0"
S1.1

NOTE: SEE CIVIL DRAWINGS FOR HANDRAIL DETAILS



SECTION 2
SCALE: 3/4" = 1'-0"
S1.1



SECTION 3
SCALE: 3/4" = 1'-0"
S1.1

| NO. | REVISIONS |
|-----|-----------|
| | |
| | |
| | |
| | |

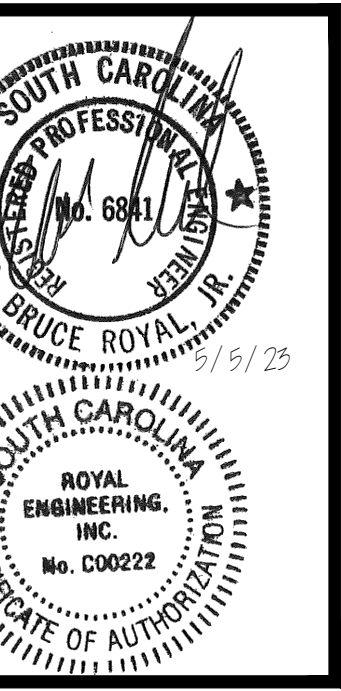


RAMP SECTIONS
FOR
AUGUSTA CIRCLE
GREENVILLE, SOUTH CAROLINA

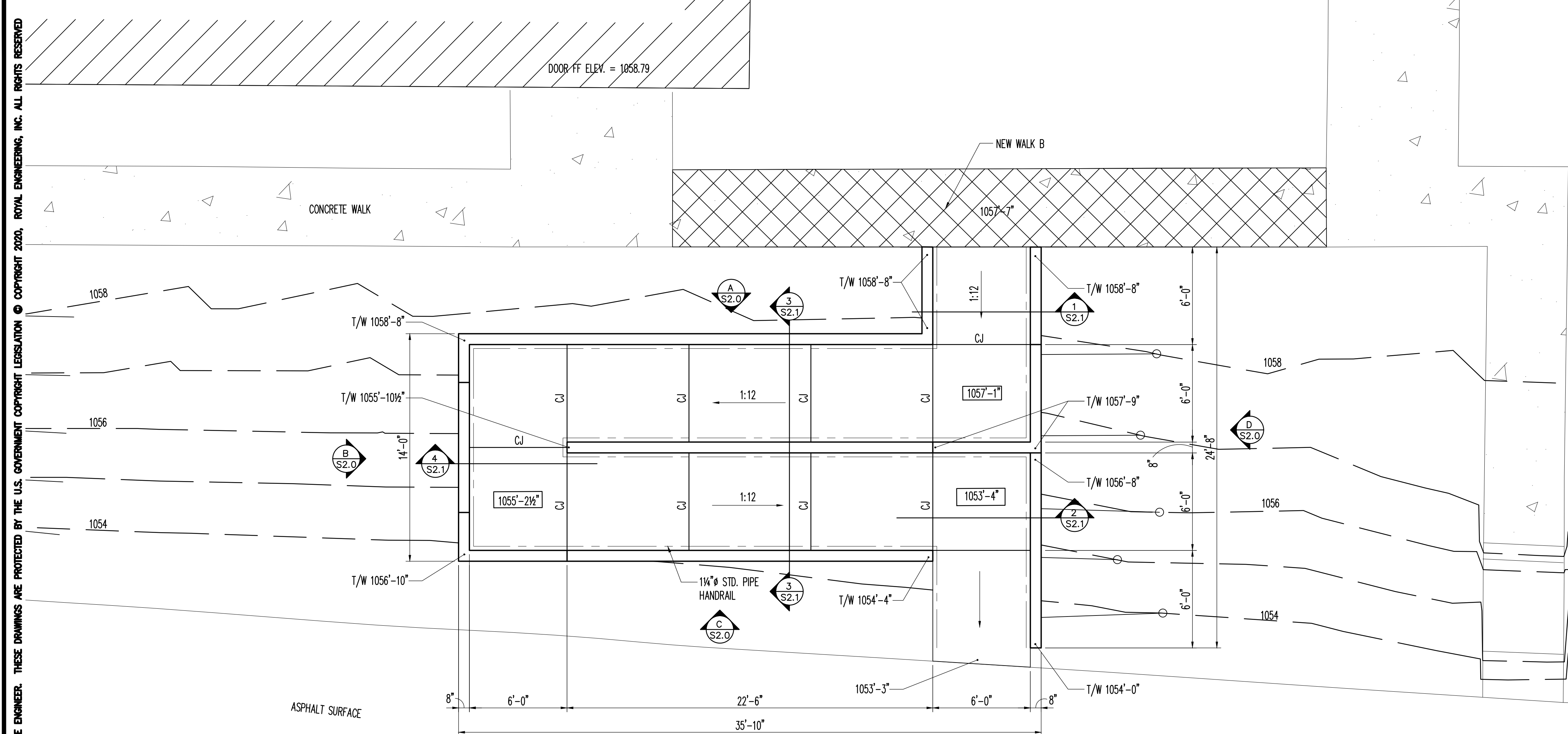
| | |
|---------|--------|
| DRAWN | DS |
| CHECKED | BR |
| DATE | 5-5-23 |
| SCALE | NOTED |
| JOB NO. | 23-084 |
| SHEET | |

S1.1

| NO. | REVISIONS |
|-----|-----------|
| | |
| | |
| | |
| | |



RAMP PLAN, ELEVATIONS & DETAILS
FOR
GATEWAY ELEMENTARY
TRAVELERS REST, SOUTH CAROLINA



GATEWAY ELEMENTARY RAMP PLAN

SCALE : 1/4" = 1'-0"

LEGEND
T/W : TOP OF WALL
CJ : TOOLED CONTROL JOINT
FGE : FINISH GRADE ELEVATION

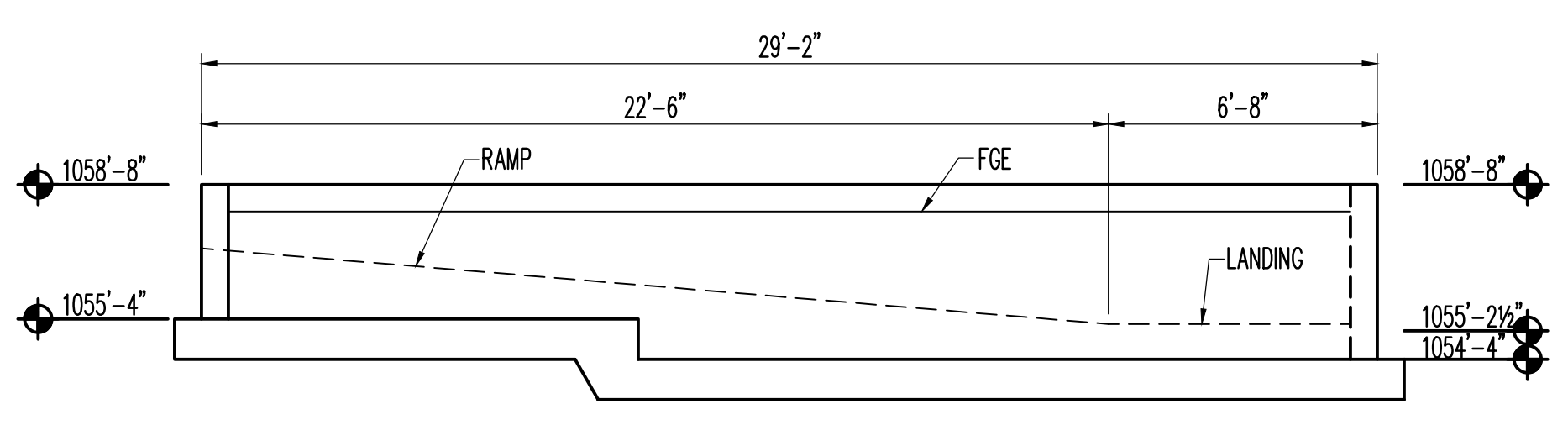
RAMP SLABS
4" CONCRETE SLAB W/ 1.5 LBS/CY
FIBERMESH ON WASHED STONE FILL.

FOUNDATION, RETAINING WALL, & SLAB NOTES

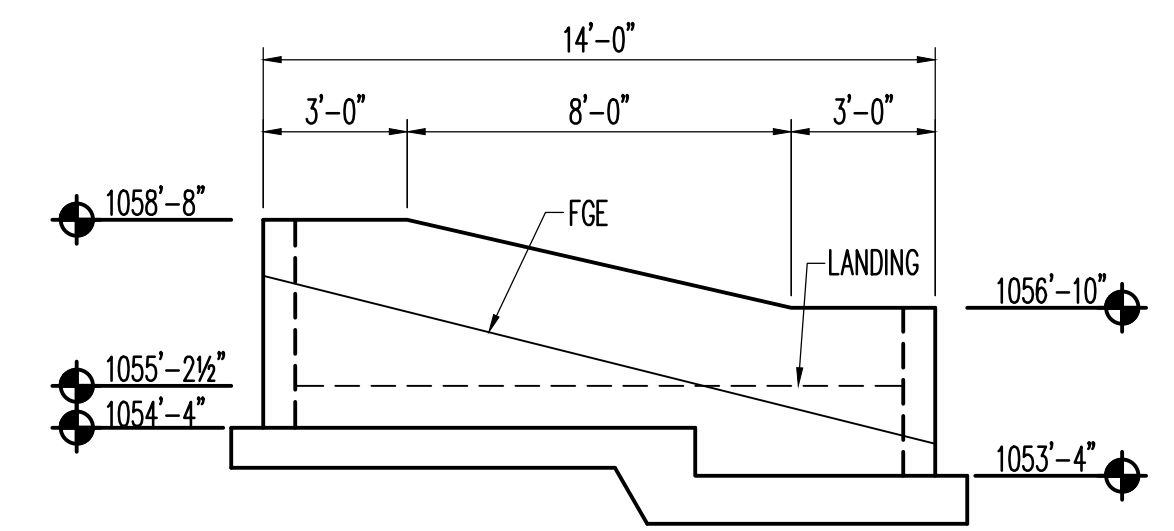
- THE FOUNDATION DESIGN IS BASED ON AN ASSUMED ALLOWABLE SOIL BEARING PRESSURE OF 2,500 PSF.
- ALL FOOTINGS SHALL BE PLACED ON UNDISTURBED SOIL OR COMPACTED FILL CONFORMING TO 95% STD. DENSITY. ALL FOOTING EXCAVATIONS SHALL BE EXAMINED BY A GEOTECHNICAL ENGINEER PRIOR TO PLACEMENT OF CONCRETE TO VERIFY SOIL BEARING PRESSURE.
- STEP FOOTINGS AS REQUIRED FOR GRADE CHANGES. CONTINUE HORIZONTAL REINFORCING BARS THRU STEPS. SEE DETAIL.
- ALL CONCRETE SHALL OBTAIN A COMPRESSIVE STRENGTH OF 3,000 PSI AT 28 DAYS. ALL CONCRETE SHALL BE POURED WITH A SLUMP OF 2 - 5 INCHES. IF ADDITIONAL SLUMP UP TO 8" IS DESIRED, A SUPERPLASTICIZER ADMIXTURE MAY BE ADDED AT THE JOBSITE.
- THE CONTRACTOR SHALL BE RESPONSIBLE FOR ANY METHODS REQUIRED TO PREVENT CONCRETE FROM FREEZING AT LEAST 24 HOURS AFTER PLACEMENT IN ACCORDANCE WITH ACI 306. A NON-CHLORIDE ACCELERATOR UP TO 2% BY WEIGHT OF CEMENT MAY BE USED.
- REINFORCING BARS SHALL BE ASTM A615 GRADE 60. ALL CONTINUOUS BARS SHALL BE TURNED AND LAPPED AT CORNERS AND INTERSECTING FOOTINGS & WALLS. LAP SPLICES SHALL BE CLASS A PER ACI 318 (#4 - 22").
- ALL CONCRETE WORK SHALL BE DONE IN ACCORDANCE WITH ACI 318.
- PLACE CONCRETE IN THE WALL AS NEAR AS POSSIBLE TO ITS FINAL LOCATION TO AVOID AGGREGATE SEGREGATION. AVOID CONCRETE FREE FALLING MORE THAN FOUR FEET.
- BACKFILL MATERIAL SHALL BE PLACED IN 8" LIFTS AND COMPACTED WITH HAND OPERATED EQUIPMENT. THE USE OF HEAVY EQUIPMENT FOR COMPACTION OF THE BACKFILL IS NOT ALLOWED ADJACENT TO THE WALL FOR A HORIZONTAL DISTANCE EQUAL TO THE HEIGHT OF THE WALL.
- ALLOW WALLS TO CURE SEVEN (7) DAYS PRIOR TO BACKFILLING.
- FIBERMESH REINFORCEMENT SHALL BE 1/2" OR 3/4" COLLATED POLYPROPYLENE FIBERS MIXED WITH THE CONCRETE AT READY MIX PLANT.

RETAINING WALL DESIGN CRITERIA

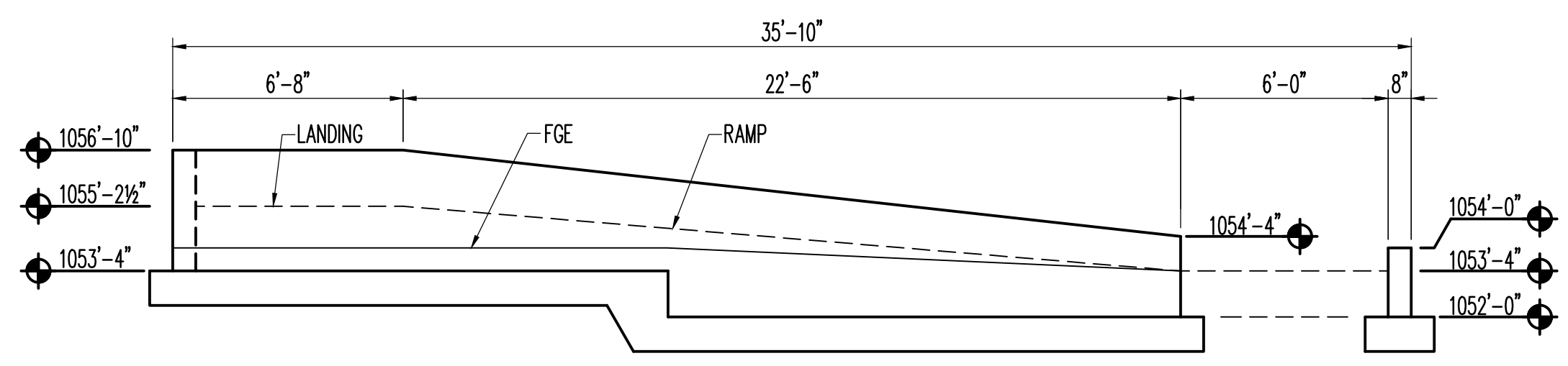
ASSUMED GEOTECHNICAL PROPERTIES:
ALLOWABLE SOIL BEARING PRESSURE : 2,500 PSF
COEFFICIENT OF FRICTION, CONCRETE-TO-SOIL : 0.50
INTERNAL ANGLE OF FRICTION : 28 DEGREES
EQUIVALENT ACTIVE LATERAL EARTH PRESSURE : 40 PCF
PASSIVE SOIL PRESSURE : 300 PCF
UNIT WEIGHT OF SOIL : 110 PCF



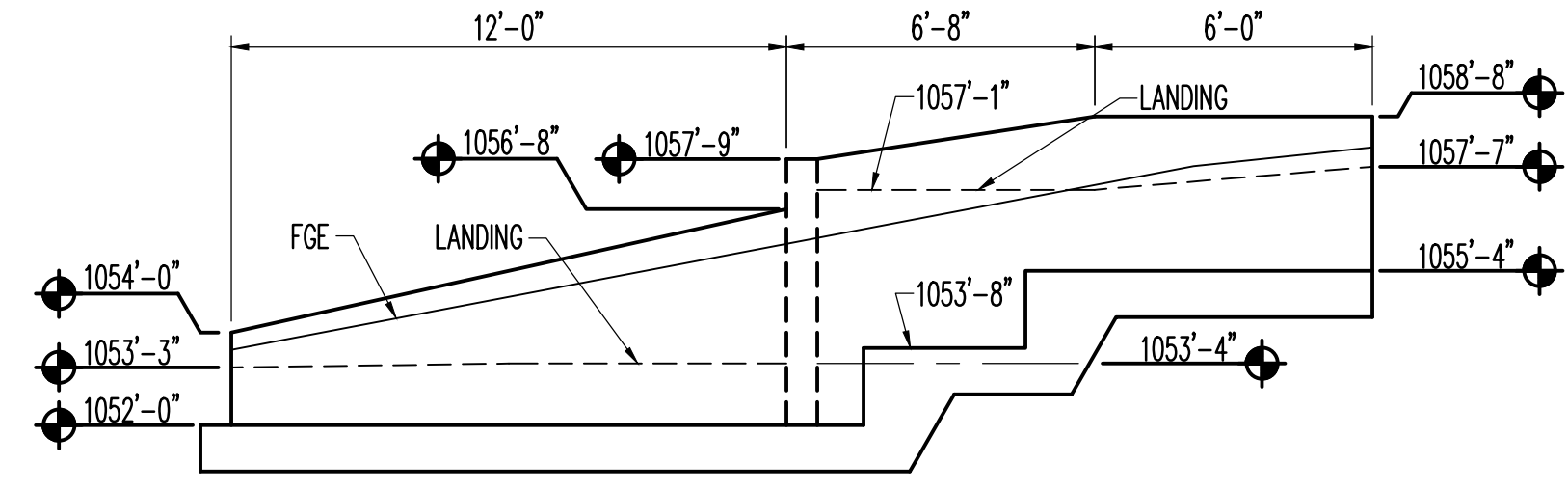
ELEVATION A
SCALE : 1/4" = 1'-0"
S2.0



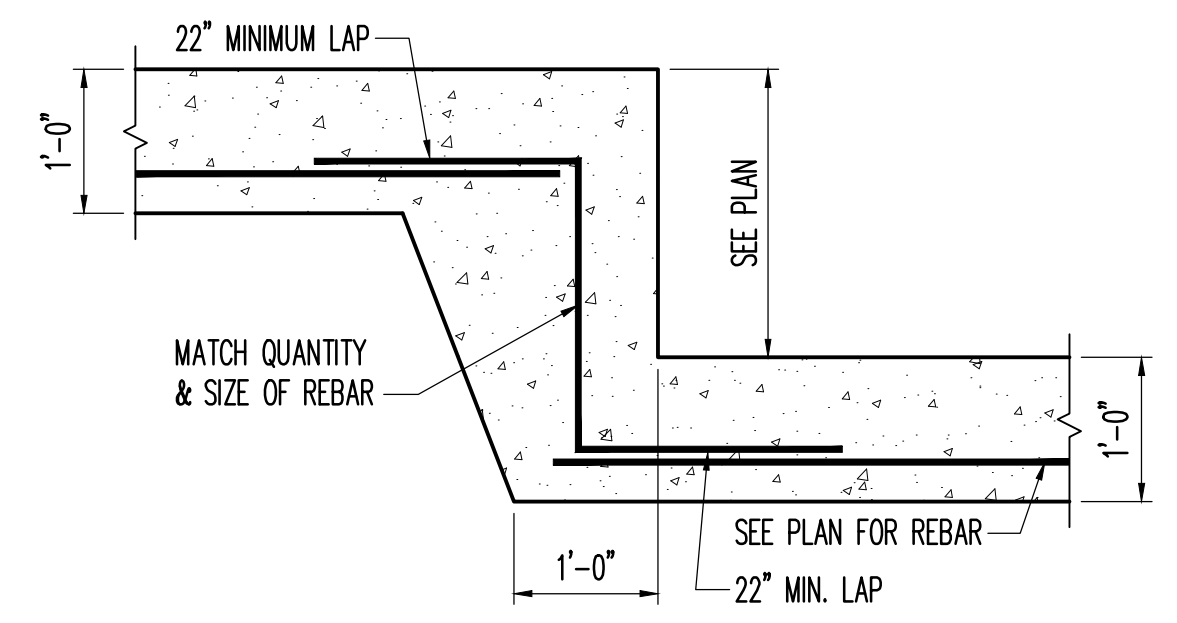
ELEVATION B
SCALE : 1/4" = 1'-0"
S2.0



ELEVATION C
SCALE : 1/4" = 1'-0"
S2.0



ELEVATION D
SCALE : 1/4" = 1'-0"
S2.0



STEP FOOTING DETAIL
SCALE : 3/4" = 1'-0"

THIS DRAWING IS A DOCUMENT OF SERVICE AND SHALL NOT BE REPRODUCED, ALTERED OR REUSED IN WHOLE OR IN PART WITHOUT THE WRITTEN PERMISSION OF THE ENGINEER. THESE DRAWINGS ARE PROTECTED BY THE U.S. GOVERNMENT COPYRIGHT LEGISLATION. © COPYRIGHT 2020, ROYAL ENGINEERING, INC. ALL RIGHTS RESERVED.

| | |
|---------|--------|
| DRAWN | DS |
| CHECKED | BR |
| DATE | 5-5-23 |
| SCALE | NOTED |
| JOB NO. | 23-084 |
| SHEET | |

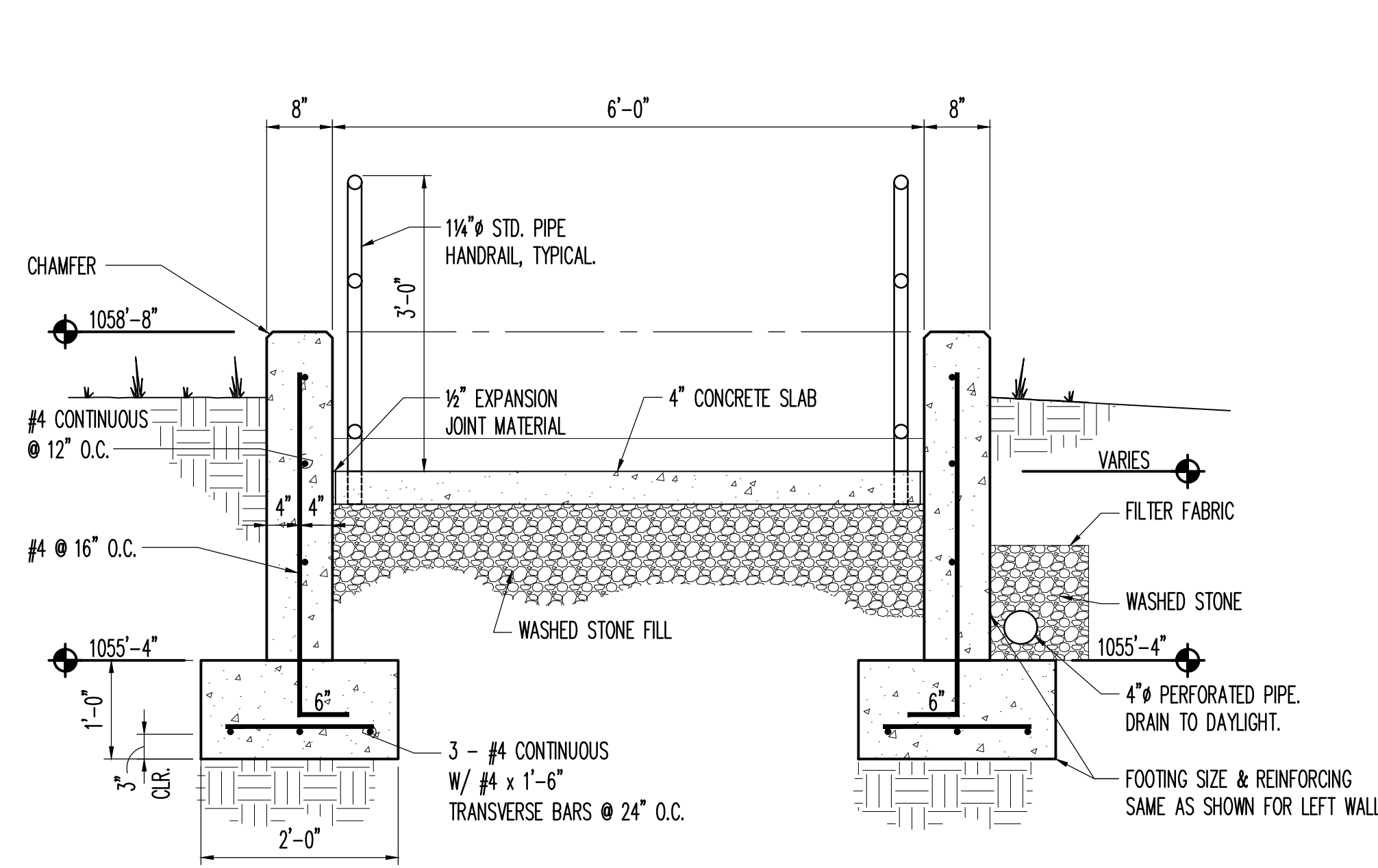
S2.0

THIS DRAWING IS A DOCUMENT OF SERVICE AND SHALL NOT BE REPRODUCED, ALTERED OR REUSED IN WHOLE OR IN PART WITHOUT THE WRITTEN PERMISSION OF THE ENGINEER. THESE DRAWINGS ARE PROTECTED BY THE U.S. GOVERNMENT COPYRIGHT LEGISLATION © COPYRIGHT 2020, ROYAL ENGINEERING, INC. ALL RIGHTS RESERVED.

REI

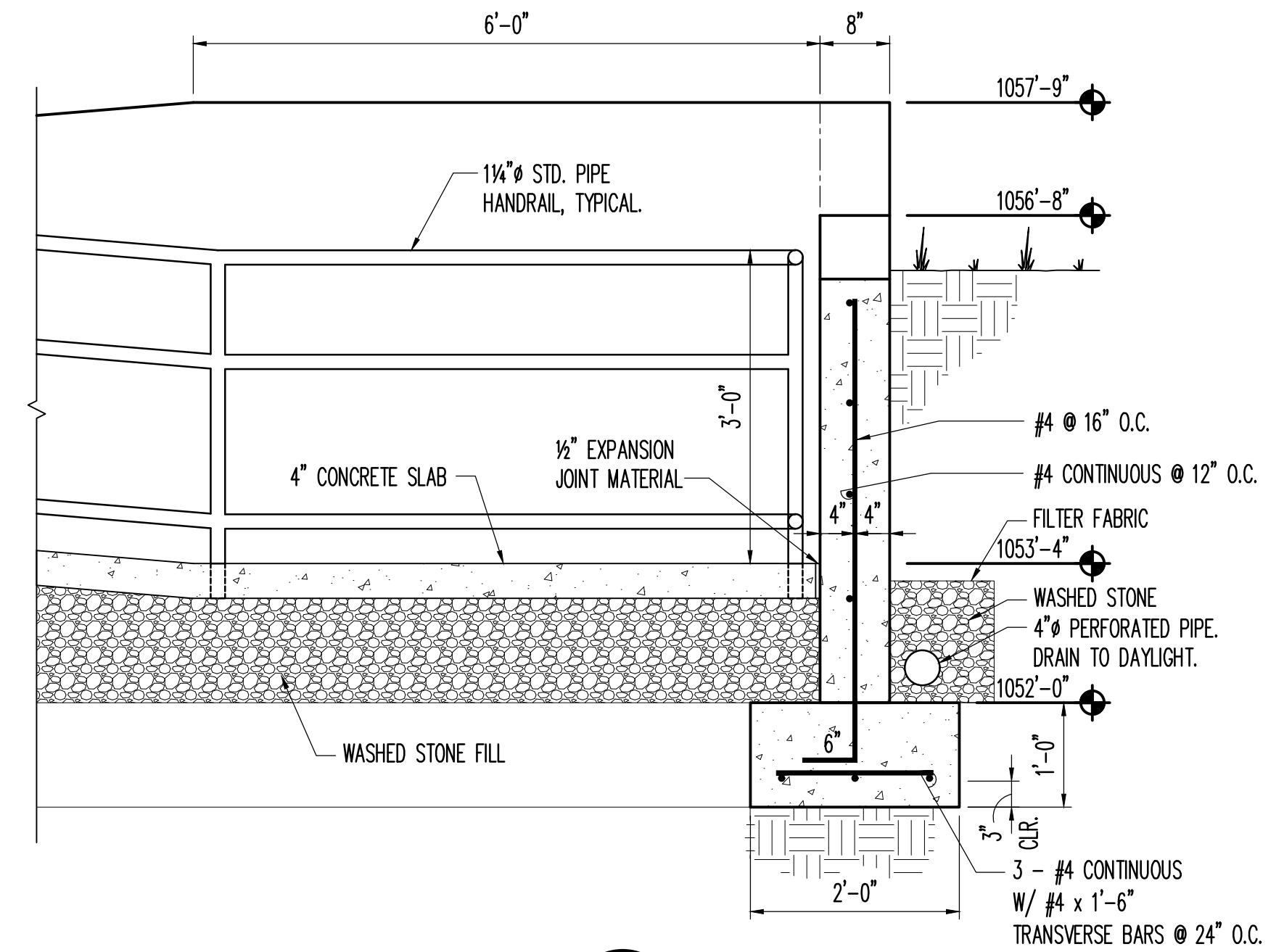
ROYAL
ENGINEERING
INC.

P.O. BOX 17828
GREENVILLE, S.C.
29606
(864) 235-4425
FAX 864-235-1330
royaleng@royalenginc.com



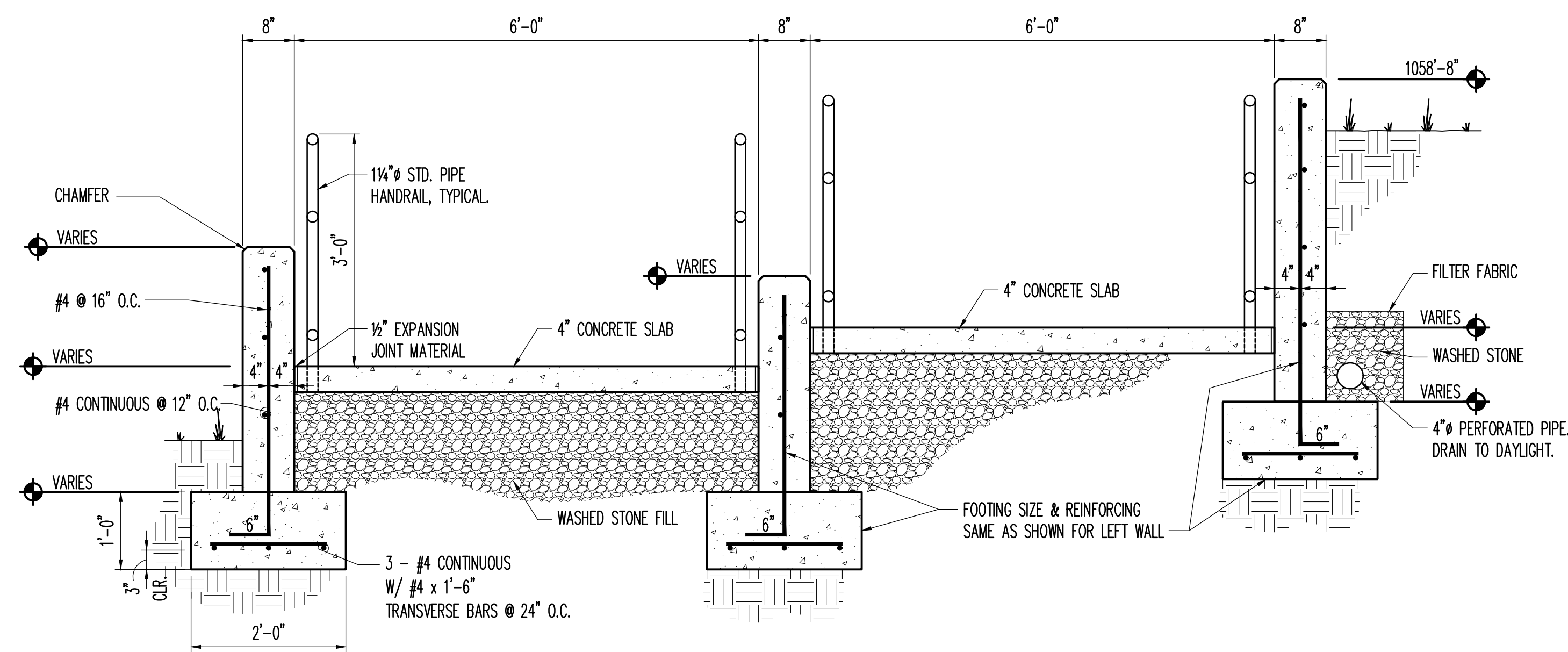
SECTION 1
SCALE: 3/4" = 1'-0" **S2.1**

NOTE: SEE CIVIL DRAWINGS
FOR HANDRAIL DETAILS



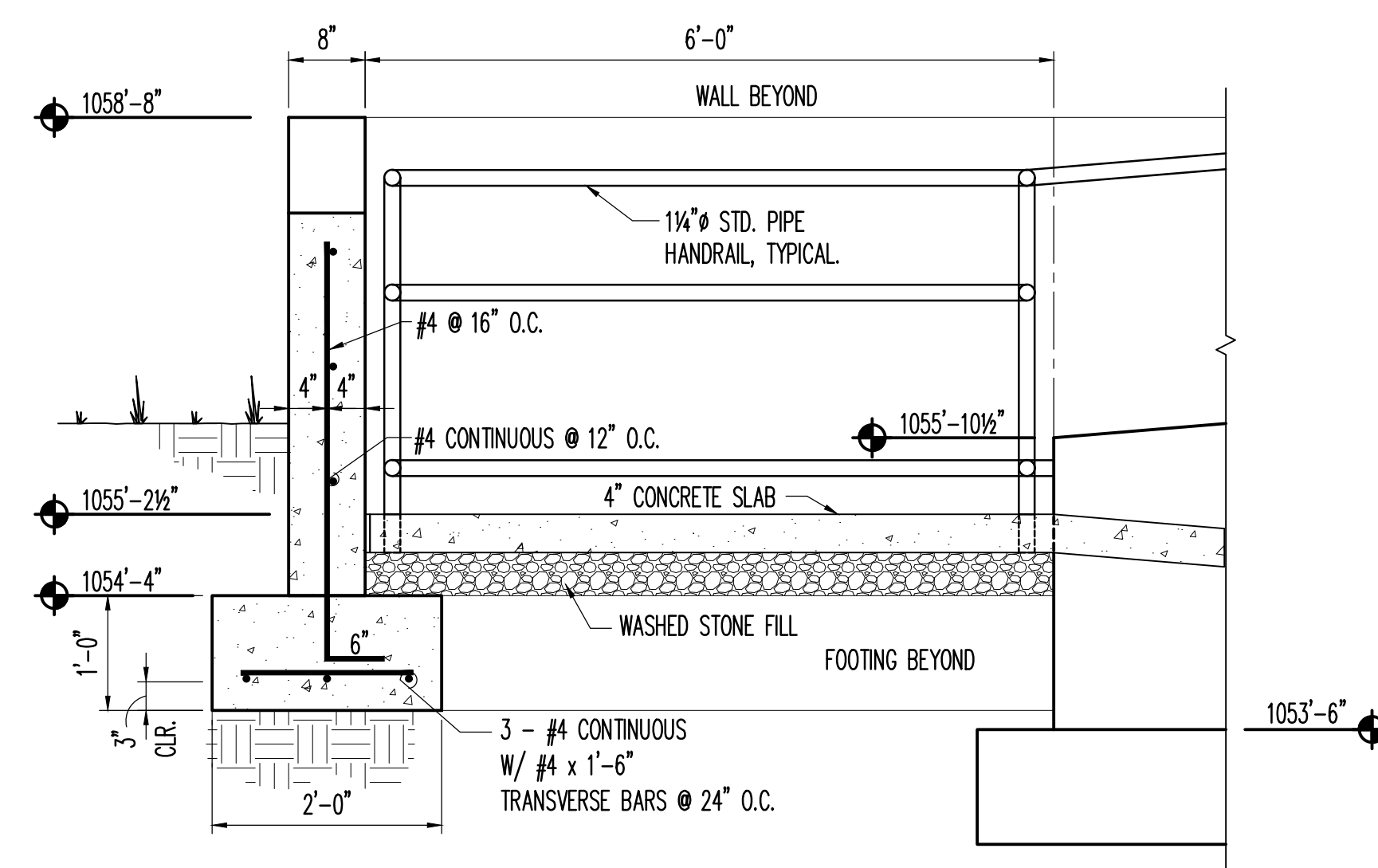
SECTION 2
SCALE: 3/4" = 1'-0" **S2.1**

NOTE: SEE CIVIL DRAWINGS
FOR HANDRAIL DETAILS



SECTION 3
SCALE: 3/4" = 1'-0" **S2.1**

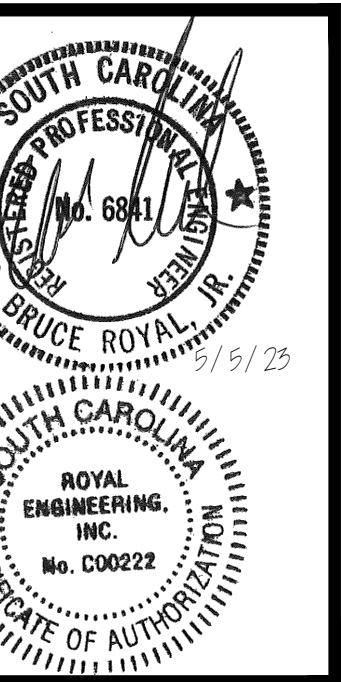
NOTE: SEE CIVIL DRAWINGS
FOR HANDRAIL DETAILS



SECTION 4
SCALE: 3/4" = 1'-0" **S2.1**

NOTE: SEE CIVIL DRAWINGS
FOR HANDRAIL DETAILS

| NO. | REVISIONS |
|-----|-----------|
| | |
| | |
| | |



RAMP SECTIONS
 FOR
GATEWAY ELEMENTARY
 TRAVELERS REST, SOUTH CAROLINA

| | |
|---------|--------|
| DRAWN | DS |
| CHECKED | BR |
| DATE | 5-5-23 |
| SCALE | NOTED |
| JOB NO. | 23-084 |
| SHEET | |

S2.1