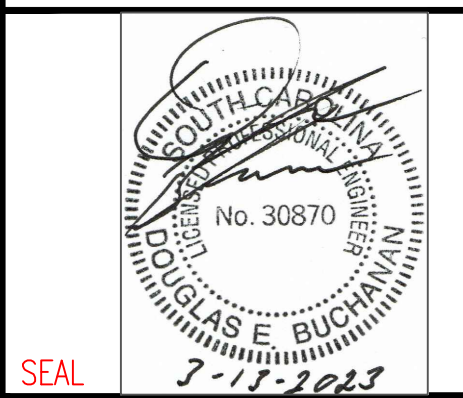


# SEVIER MIDDLE SCHOOL 1000 PIEDMONT PARK ROAD GREENVILLE, SC 29609 BUILDING ENVELOPE REPAIR



P-1817  
1001 LANCASTER AVE.  
MONROE, NC 28112  
704-282-0826



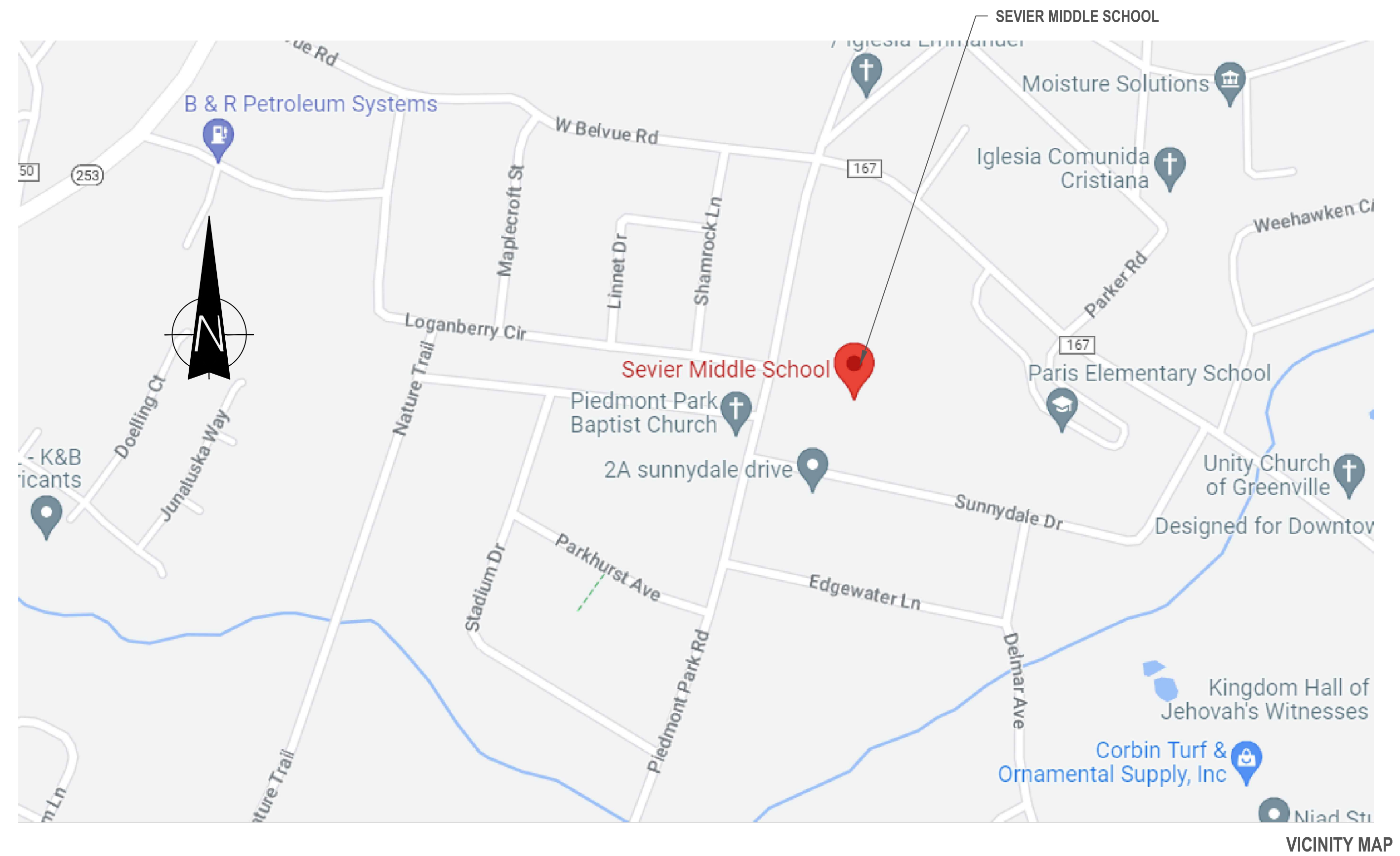
**School Dist of  
Greenville County  
301 E Camperdown Way  
Greenville, SC 29601**

OWNER

**SEVIER MIDDLE SCHOOL  
1000 PIEDMONT PARK ROAD  
GREENVILLE, SC 29609  
BUILDING ENVELOPE REPAIR**



SEVIER MIDDLE SCHOOL



VICINITY MAP

**DESCRIPTION OF WORK:**

- A. REMOVE OLD CAULK AND BACKER ROD IN THE EXPANSION JOINTS AND BETWEEN THE WINDOW/DOOR FRAMES AND CONCRETE/BRICK VENEER.
- B. INSTALL NEW BACKER ROD AND CAULK IN THE EXPANSION JOINTS AND BETWEEN THE WINDOW/DOOR FRAMES AND CONCRETE/BRICK VENEER.
- C. REMOVE OLD CAULK AND RE-CAULK ALL LOUVERS AND VENTS. NOT ALL LOUVERS AND VENTS ARE SHOWN ON DETAIL DRAWINGS.
- D. PRESSURE WASH THE EXTERIOR OF THE BUILDING
- E. COATING THE EXTERIOR EXPOSED CONCRETE PANELS. THE BRICK VENEER DOES NOT RECEIVE ANY COATING. ANY OVER SPRAY SHALL BE REMOVED.
- F. CLEAN THE EXTERIOR OF ALL THE WINDOWS.

**DRAWINGS:**

- CO-1 COVER SHEET
- C-1 PLAN
- C-2 ELEVATIONS
- C-3 ELEVATIONS
- C-4 WINDOW AND DOOR ELEV.
- C-5 WINDOW AND DOOR ELEV.
- C-6 TURRETT ELEV. / WINDOW AND DOOR ELEV.
- C-7 DETAILS

**NOTES:**

1. SEEDING SPECIFICATION IF REQUIRED.
  - a. K31 - AT 100 POUNDS PER ACRE.
  - b. LIME - AT 50 POUNDS PER ACRE.
  - c. 10-10-10 FERTILIZER - AT 100 POUNDS PER ACRE.
  - d. ANNUAL RYE - AT 10 POUNDS PER ACRE.
  - e. STRAW - 4,000 LB/ACRE.
  - f. LOOSEN SOIL REMOVING /BREAK UP ANY CLODS. REMOVE ALL ROCKS.
  - g. MIX THE LIME AND FERTILIZER INTO THE TOP INCH OF THE SOIL.
  - h. COVER THE SEED WITH ¼" OF SOIL AND THEN PLACE STRAW.
  - i. WATER EACH DAY FOR THREE DAYS.

MARK	DATE	DESCRIPTION
	0-00-0000	XXXXXXXXXX

CAD DWG FILE:  
DRAWN BY: CDT  
CHK'D BY:  
DATE: 3-13-2023  
COPYRIGHT

**COVER SHEET**

**CO-1**

FOR CONSTRUCTION

PAGE NUMBER





**WOLF TRAIL™**  
ENGINEERING

P-1817  
1001 LANCASTER AVE.  
MONROE, NC 28112  
704-282-0826



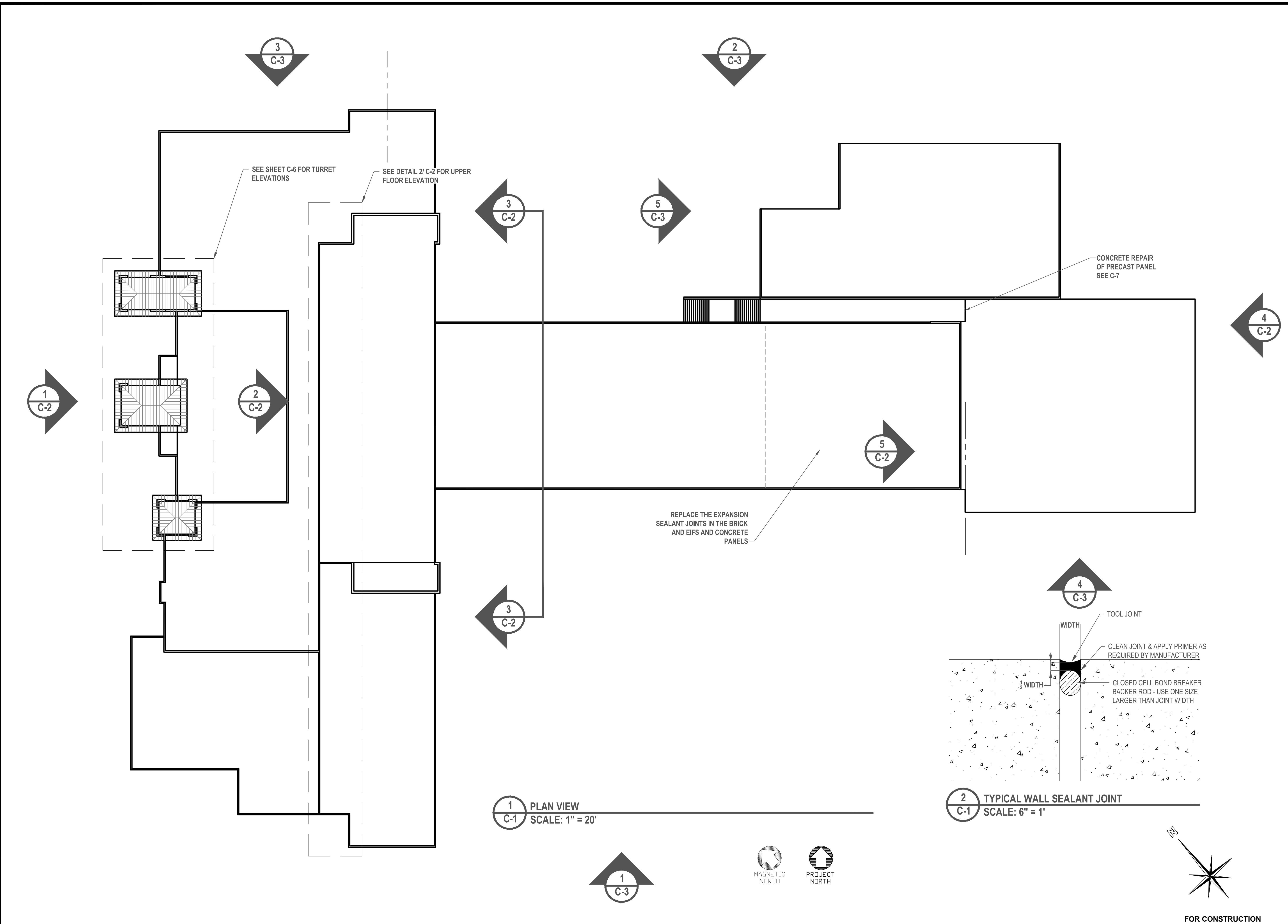
**School Dist of  
Greenville County  
301 E Camperdown Way  
Greenville, SC 29601**

**SEVIER MIDDLE SCHOOL  
1000 PIEDMONT PARK ROAD  
GREENVILLE, SC 29609  
BUILDING ENVELOPE REPAIR**

MARK	DATE	DESCRIPTION
	0-00-0000	XXXXXXXXXX

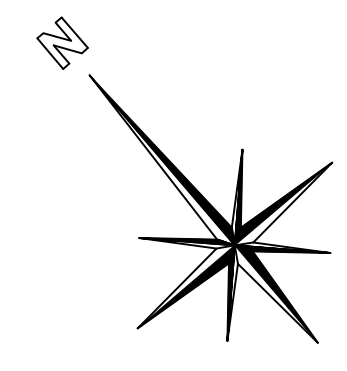
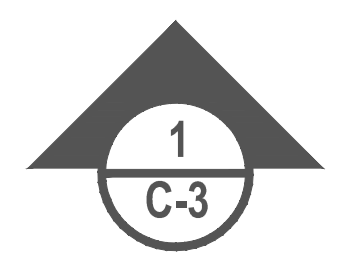
CAD DWG FILE:  
DRAWN BY: CDT  
CHK'D BY:  
DATE: 3-13-2023  
COPYRIGHT

**PLAN**  
SHEET TITLE  
**C-1**  
PAGE NUMBER

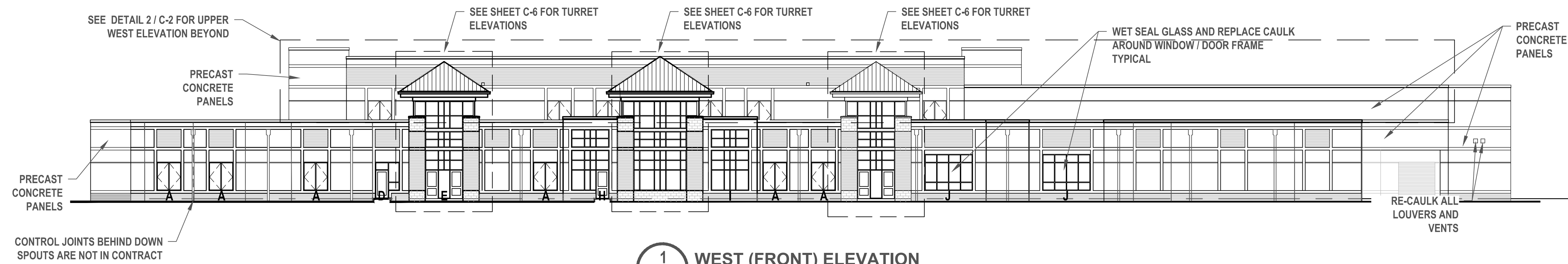


**1** PLAN VIEW  
C-1 SCALE: 1" = 20'

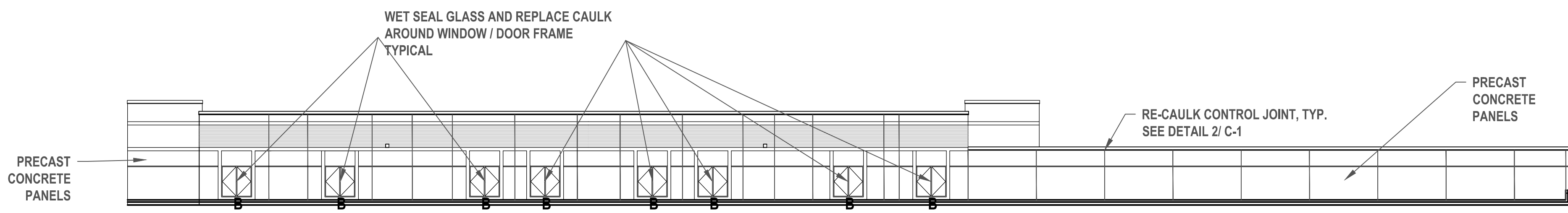
**2** TYPICAL WALL SEALANT JOINT  
C-1 SCALE: 6" = 1'



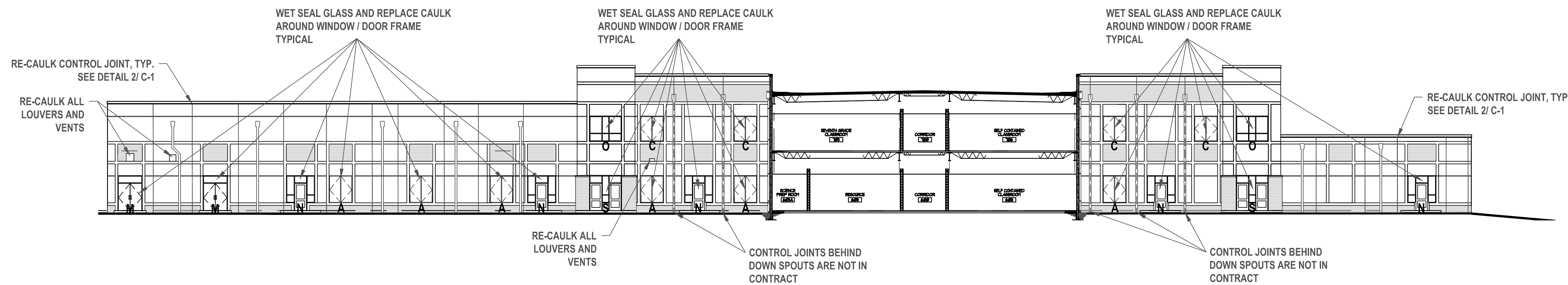
FOR CONSTRUCTION



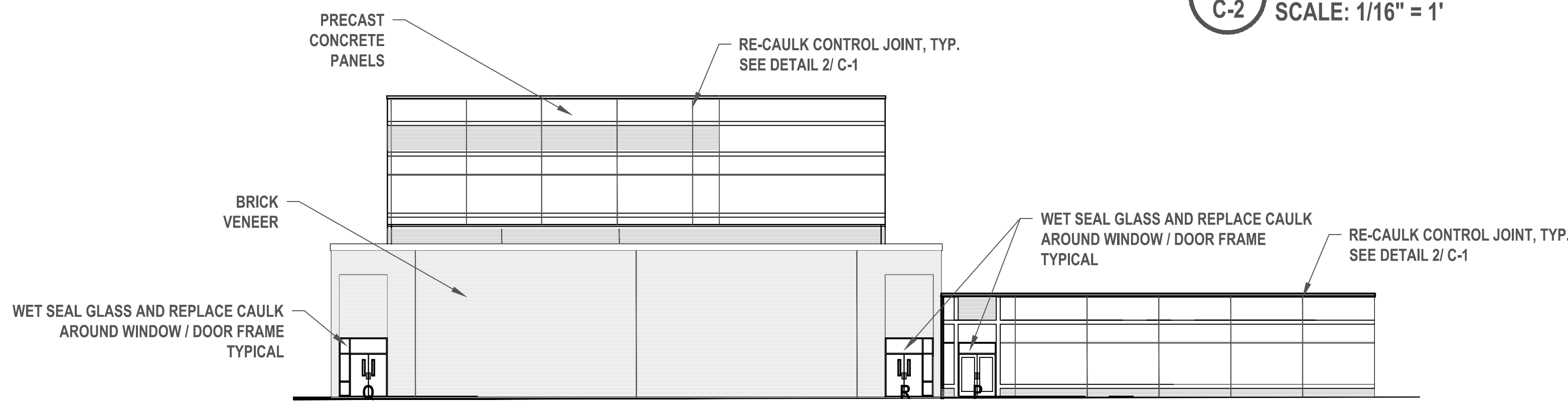
**1 WEST (FRONT) ELEVATION**  
C-2 SCALE: 1/16" = 1'



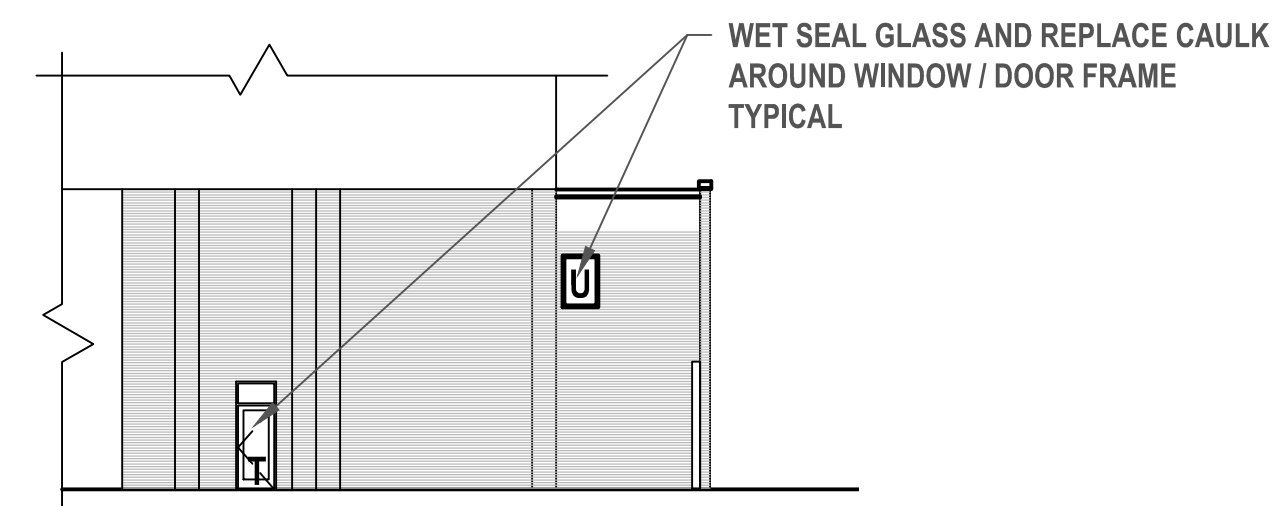
**2 WEST (FRONT) ELEVATION UPPER FLOOR**  
C-2 SCALE: 1/16" = 1'



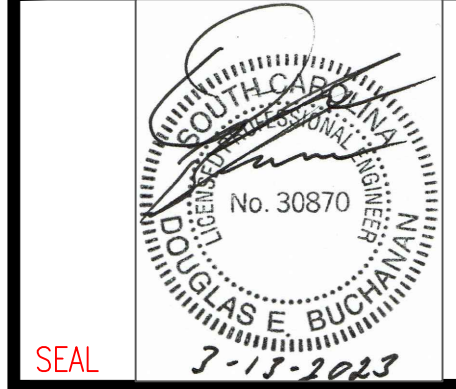
**3 EAST (REAR) ELEVATION**  
C-2 SCALE: 1/16" = 1'



**4 EAST (REAR) ELEVATION @ BAND ROOM**  
C-2 SCALE: 1/16" = 1'



**5 WEST (FRONT) ELEVATION BAND ROOM**  
C-2 SCALE: 1/16" = 1'



**School Dist of Greenville County**  
301 E Camperdown Way  
Greenville, SC 29601

**SEVIER MIDDLE SCHOOL**  
1000 PIEDMONT PARK ROAD  
GREENVILLE, SC 29609  
BUILDING ENVELOPE REPAIR

MARK	DATE	DESCRIPTION
	0-00-0000	XXXXXXXXXX

CAD DWG FILE:  
DRAWN BY: CDT  
CHK'D BY:  
DATE: 3-13-2023  
COPYRIGHT

**ELEVATIONS**

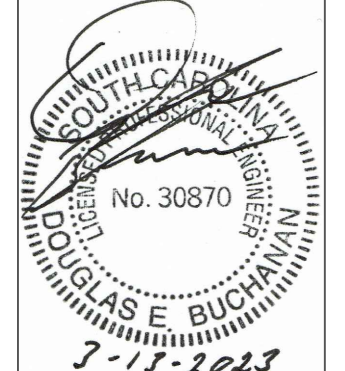
SHEET TITLE  
**C-2**  
PAGE NUMBER





**WOLF TRAIL™**  
ENGINEERING

P-1817  
1001 LANCASTER AVE.  
MONROE, NC 28112  
704-282-0826



SEAL

**School Dist of Greenville County**  
301 E Camperdown Way  
Greenville, SC 29601

OWNER

**SEVIER MIDDLE SCHOOL**  
1000 PIEDMONT PARK ROAD  
GREENVILLE, SC 29609  
BUILDING ENVELOPE REPAIR

MARK	DATE	DESCRIPTION
	0-00-0000	XXXXXXXXXX

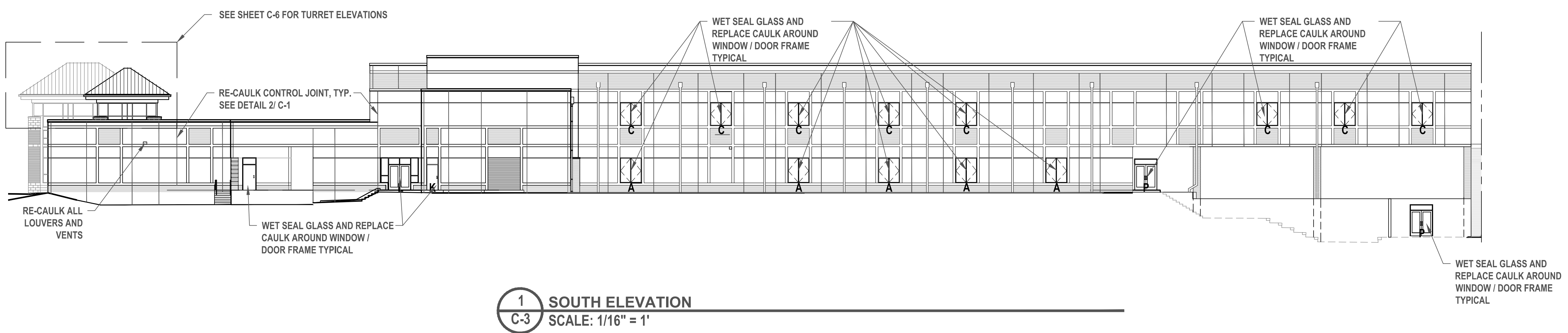
CAD DWG FILE:  
DRAWN BY: CDT  
CHK'D BY:  
DATE: 3-13-2023  
COPYRIGHT

**ELEVATIONS**

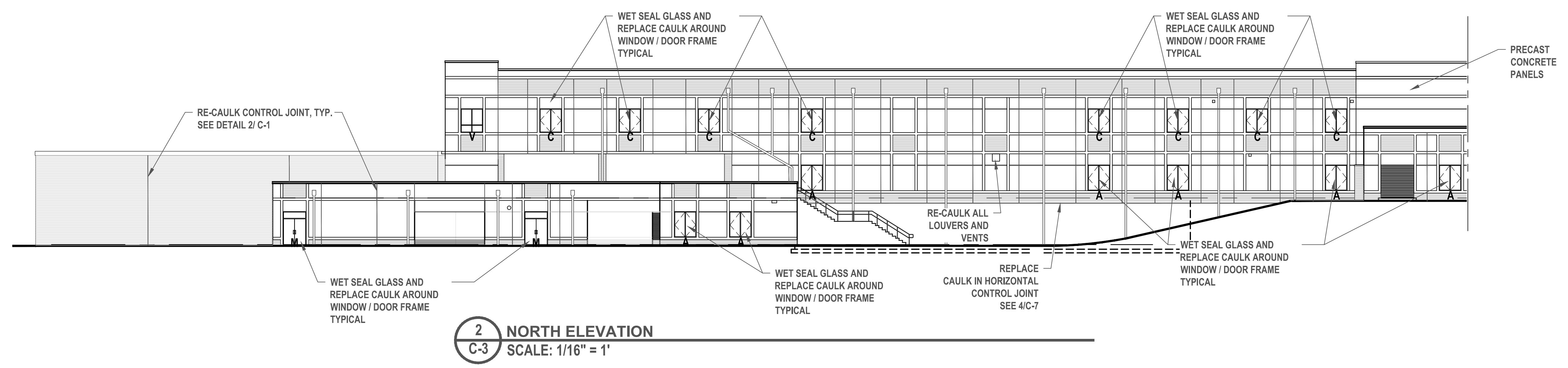
SHEET TITLE

**C-3**

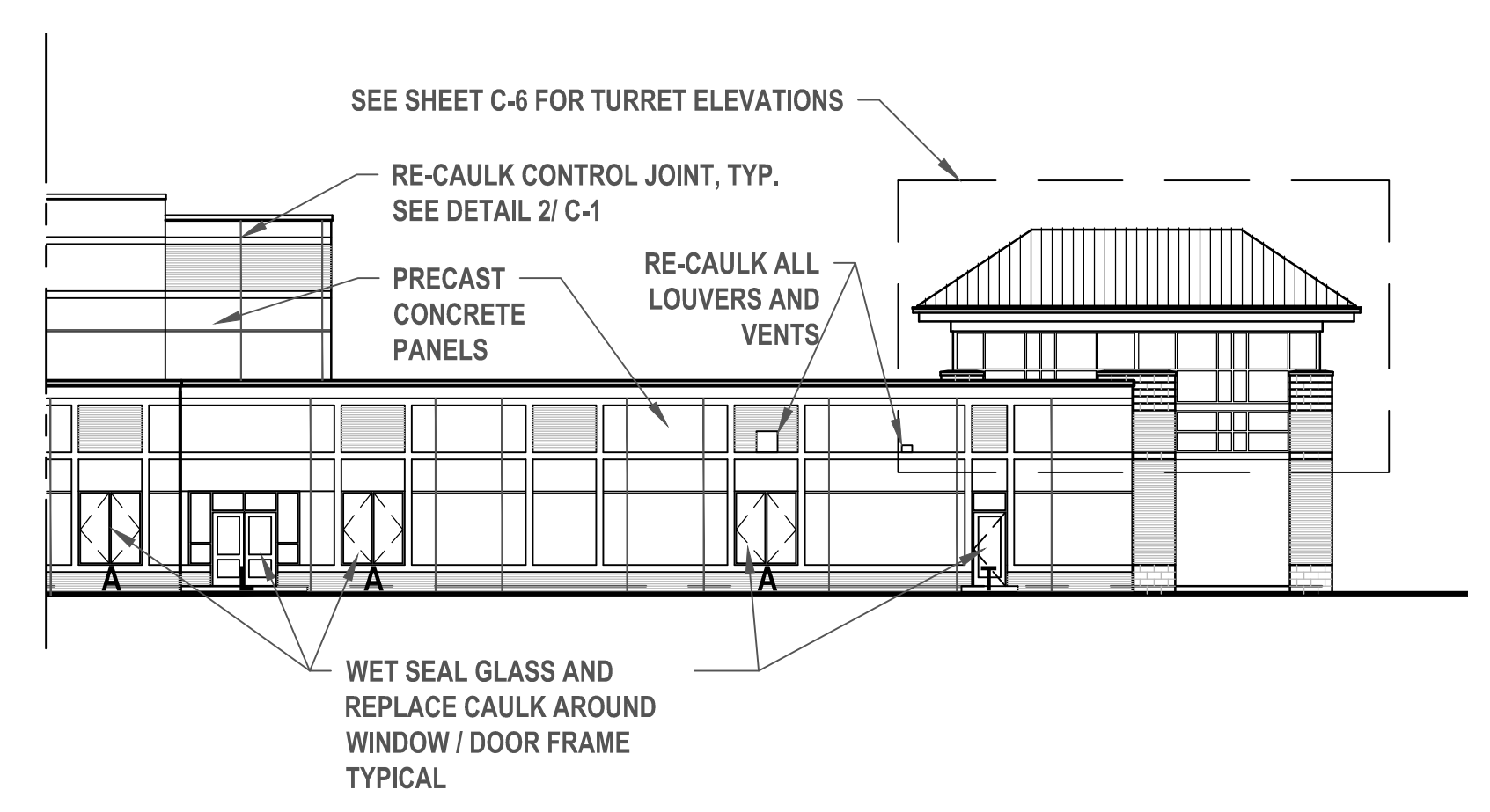
PAGE NUMBER



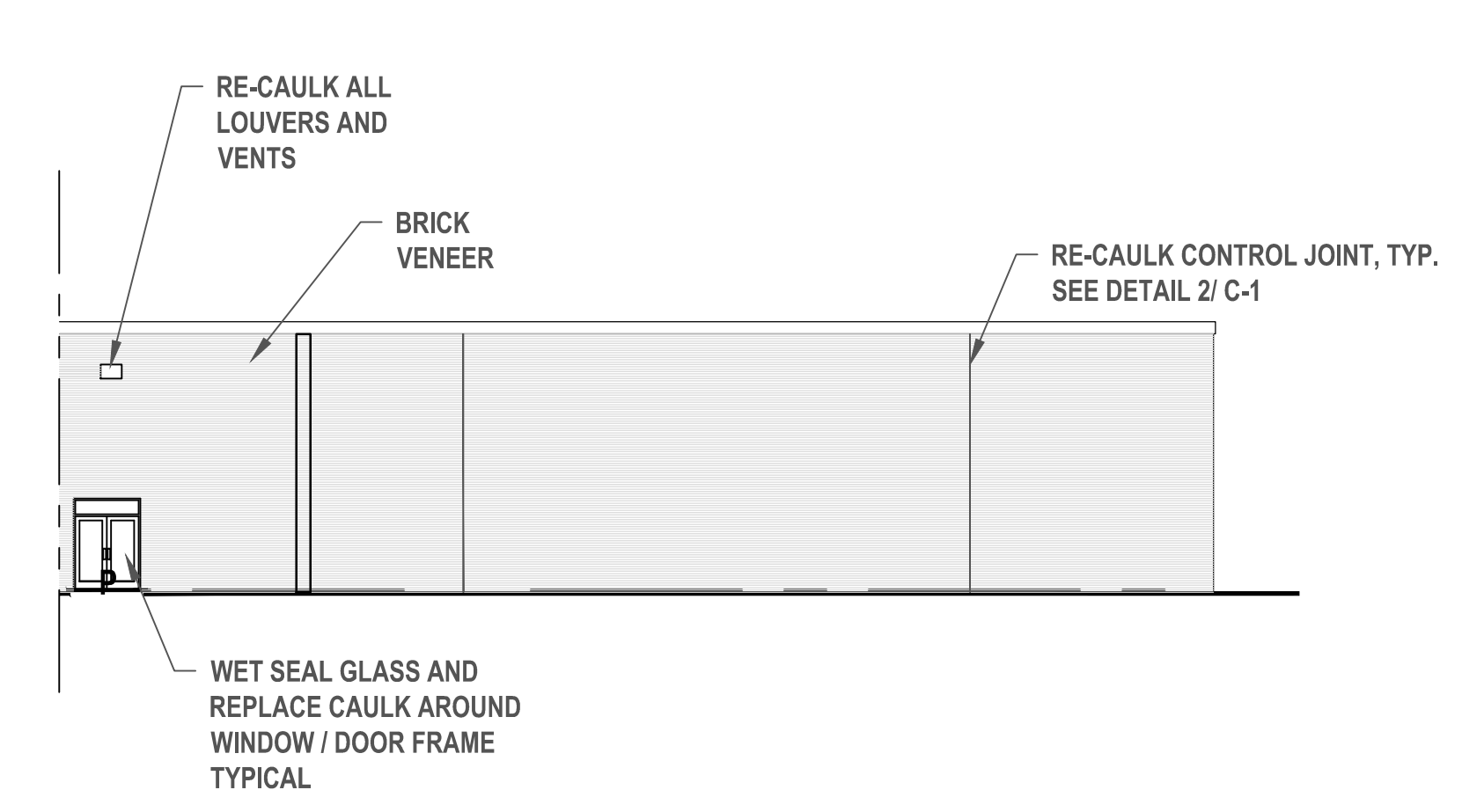
**1 SOUTH ELEVATION**  
C-3 SCALE: 1/16" = 1'



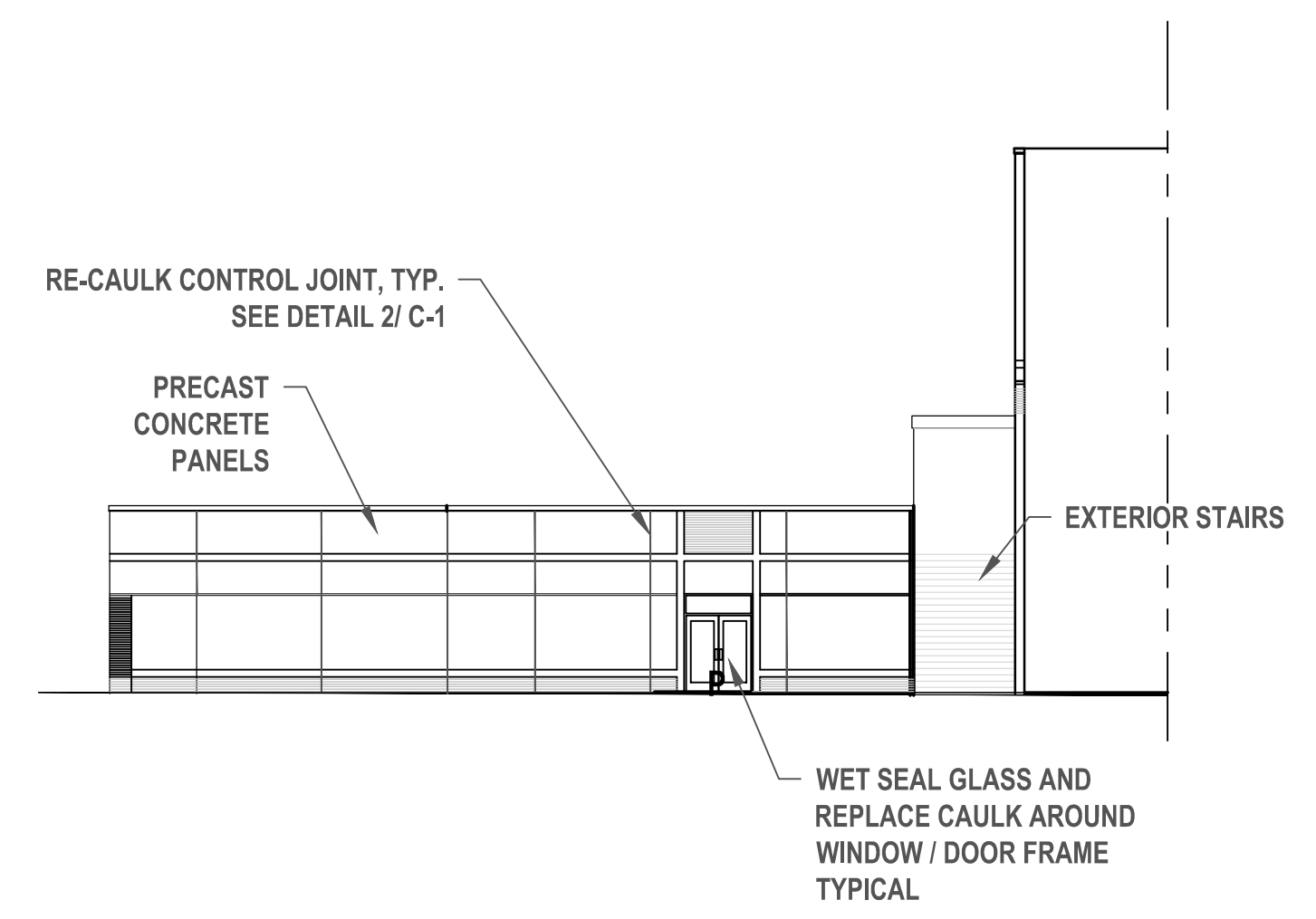
**2 NORTH ELEVATION**  
C-3 SCALE: 1/16" = 1'



**3 NORTH ELEVATION CONTINUED**  
C-3 SCALE: 1/16" = 1'

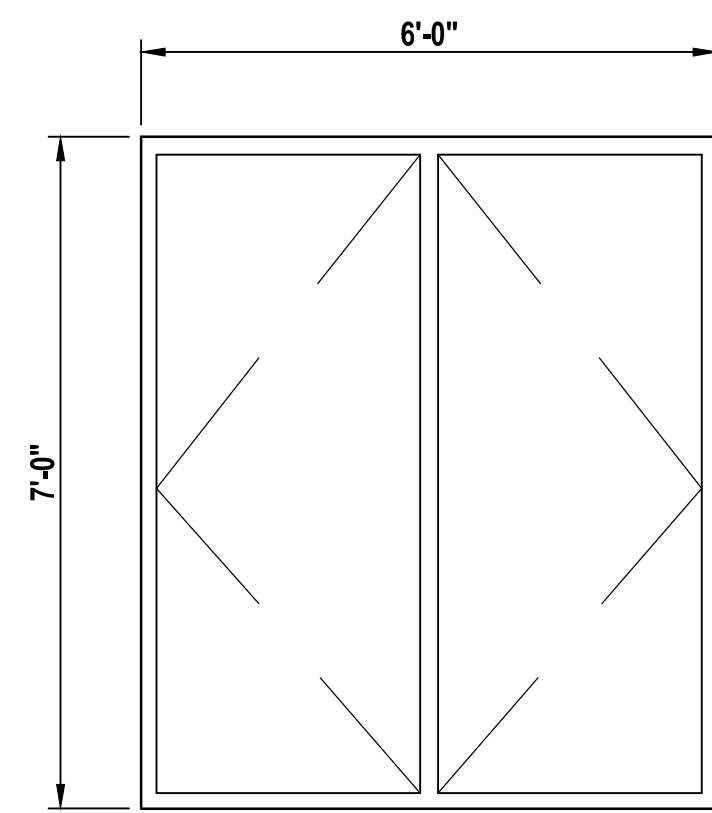


**4 SOUTH ELEVATION CONTINUED**  
C-3 SCALE: 1/16" = 1'

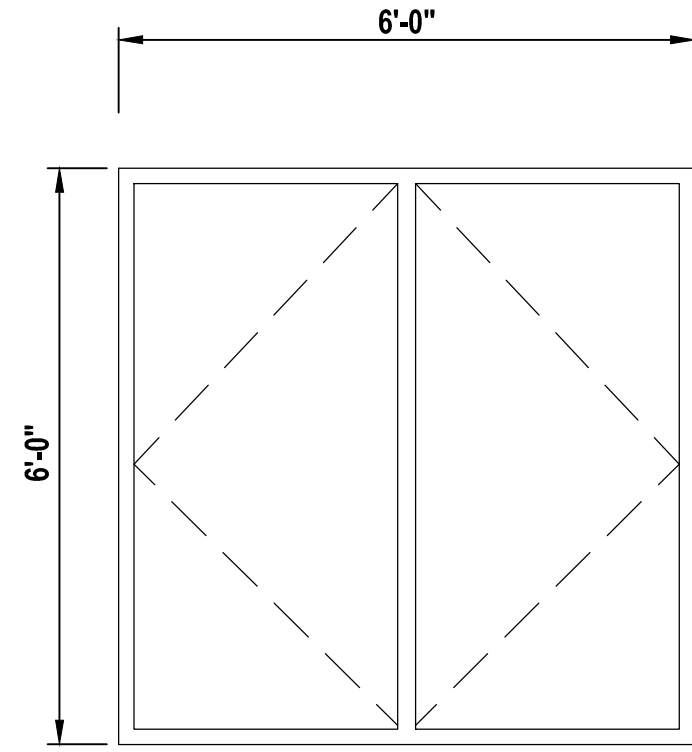


**5 WEST ELEVATION LOWER FLOOR**  
C-3 SCALE: 1/16" = 1'

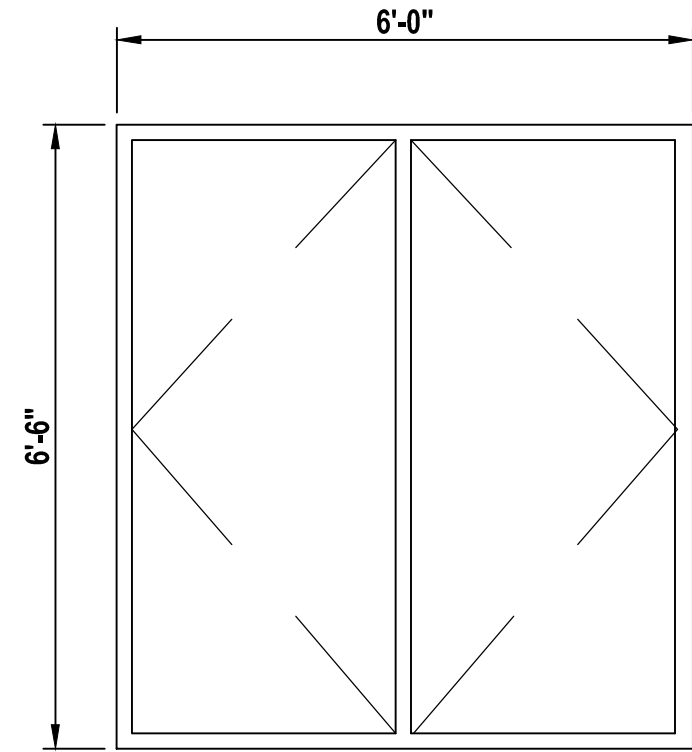
FOR CONSTRUCTION



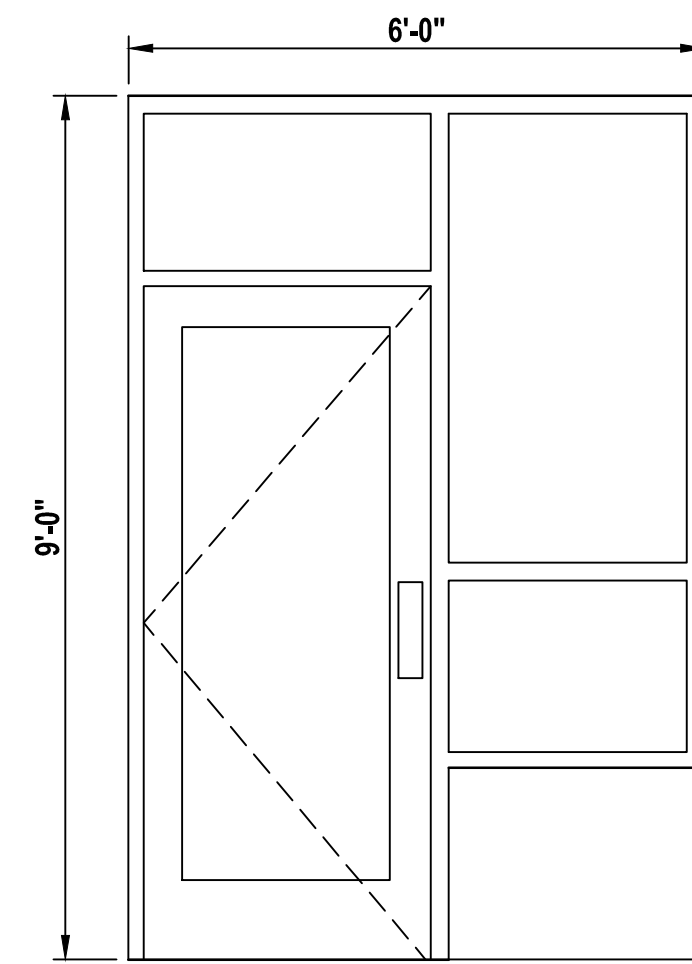
A



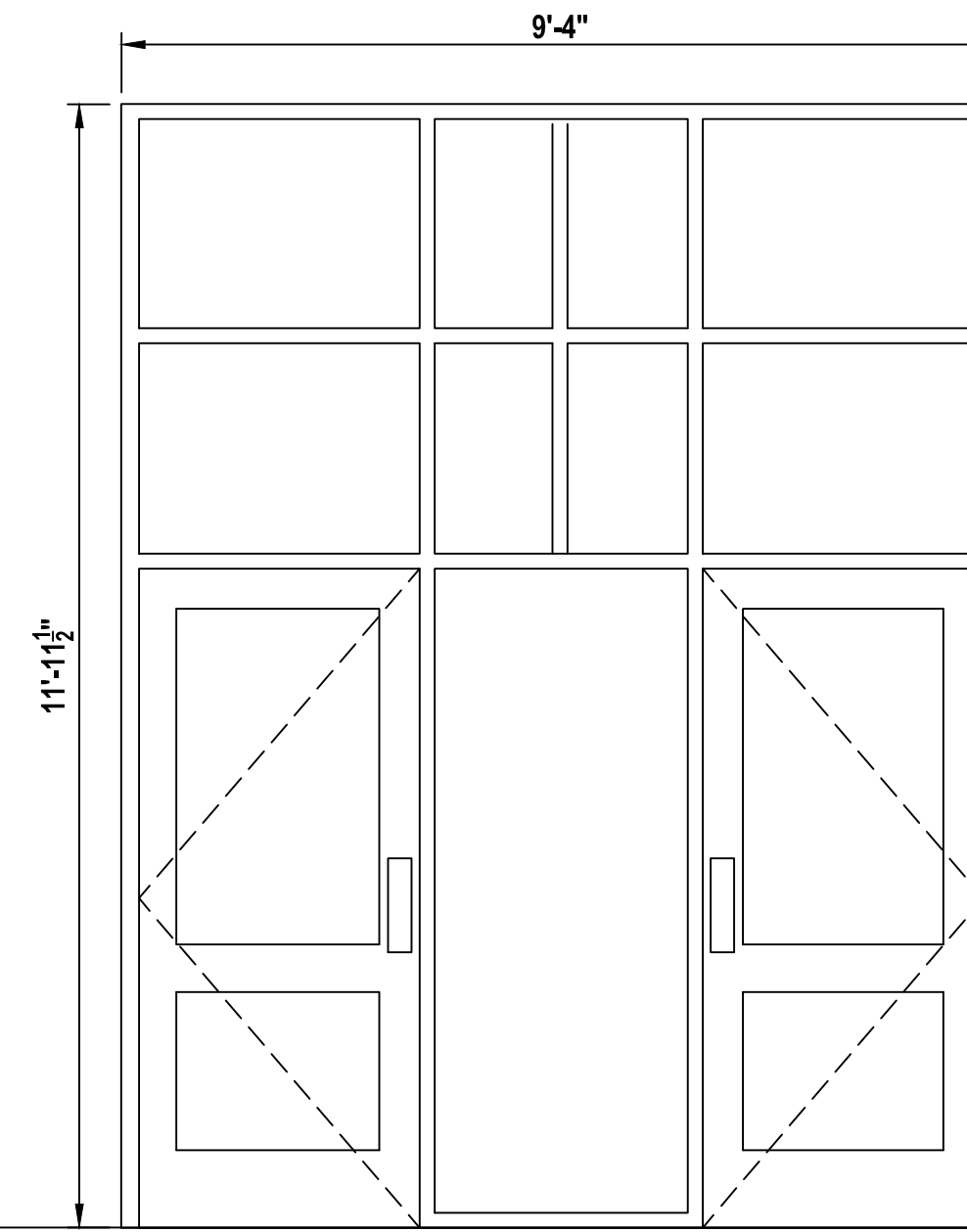
B



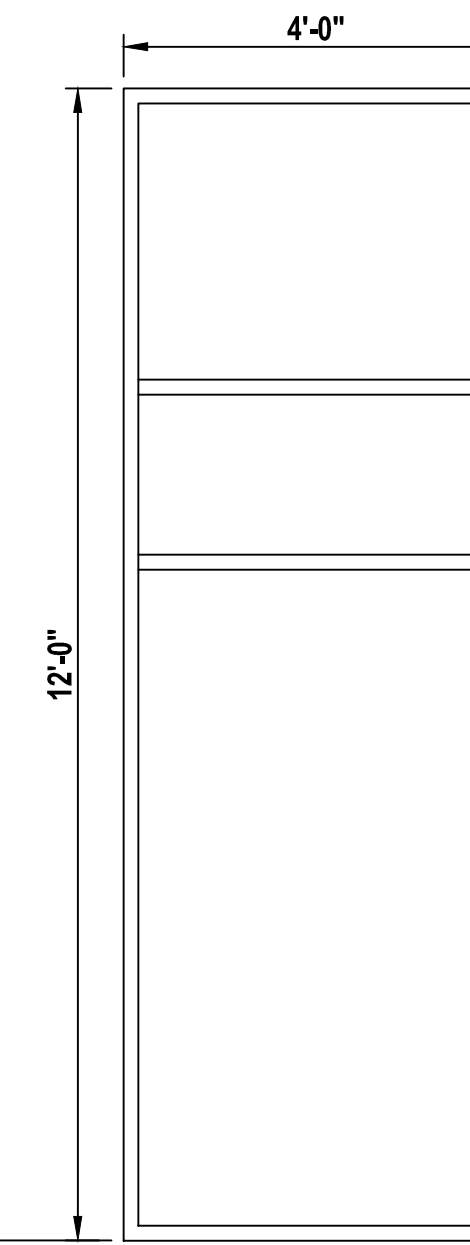
C



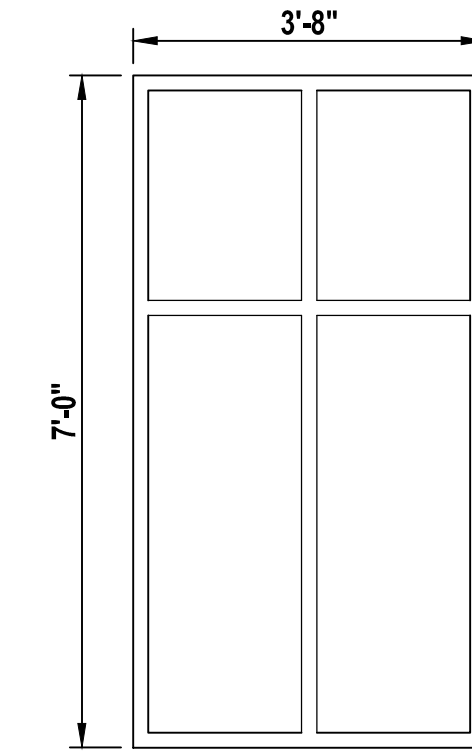
D



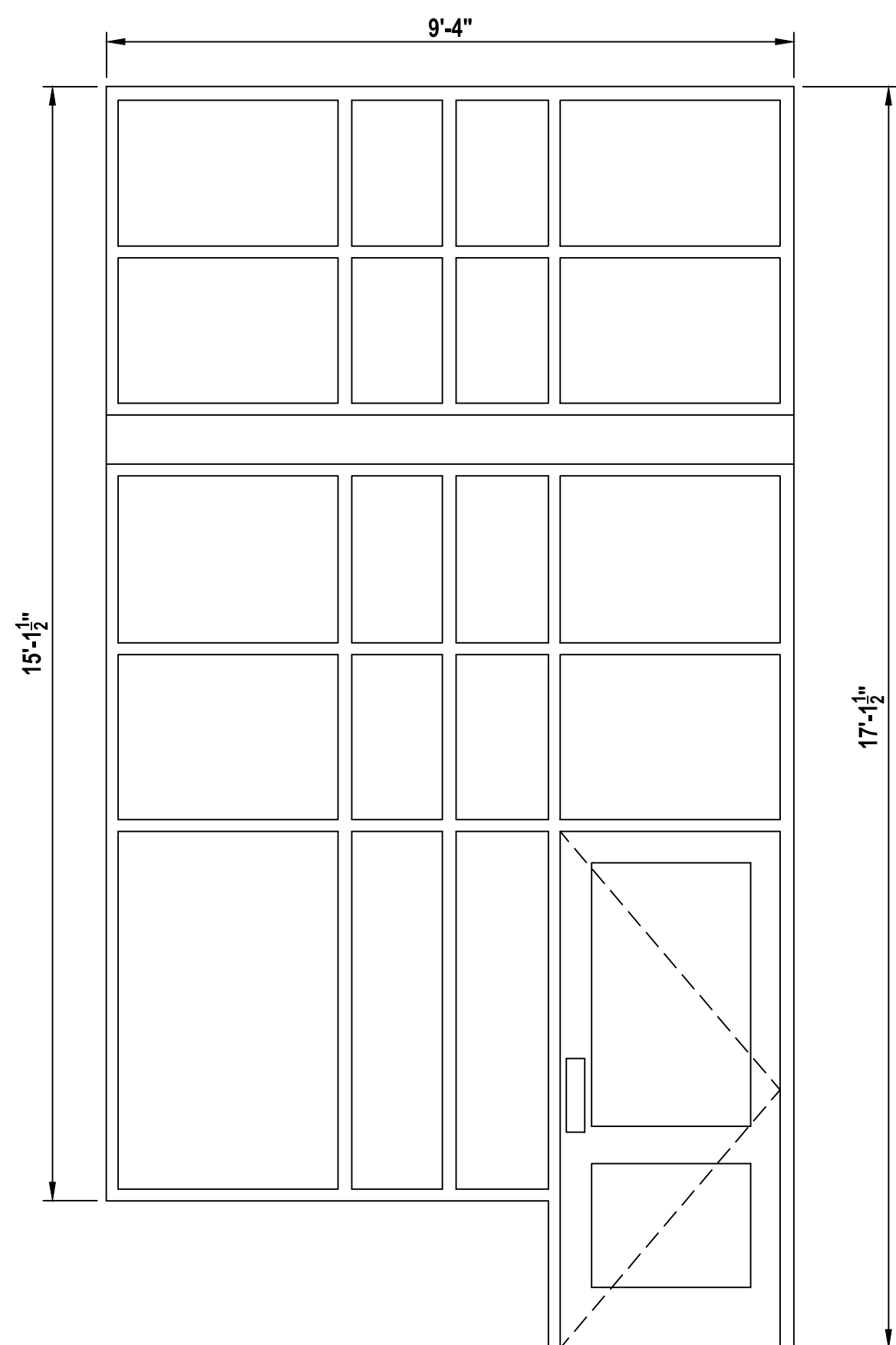
E



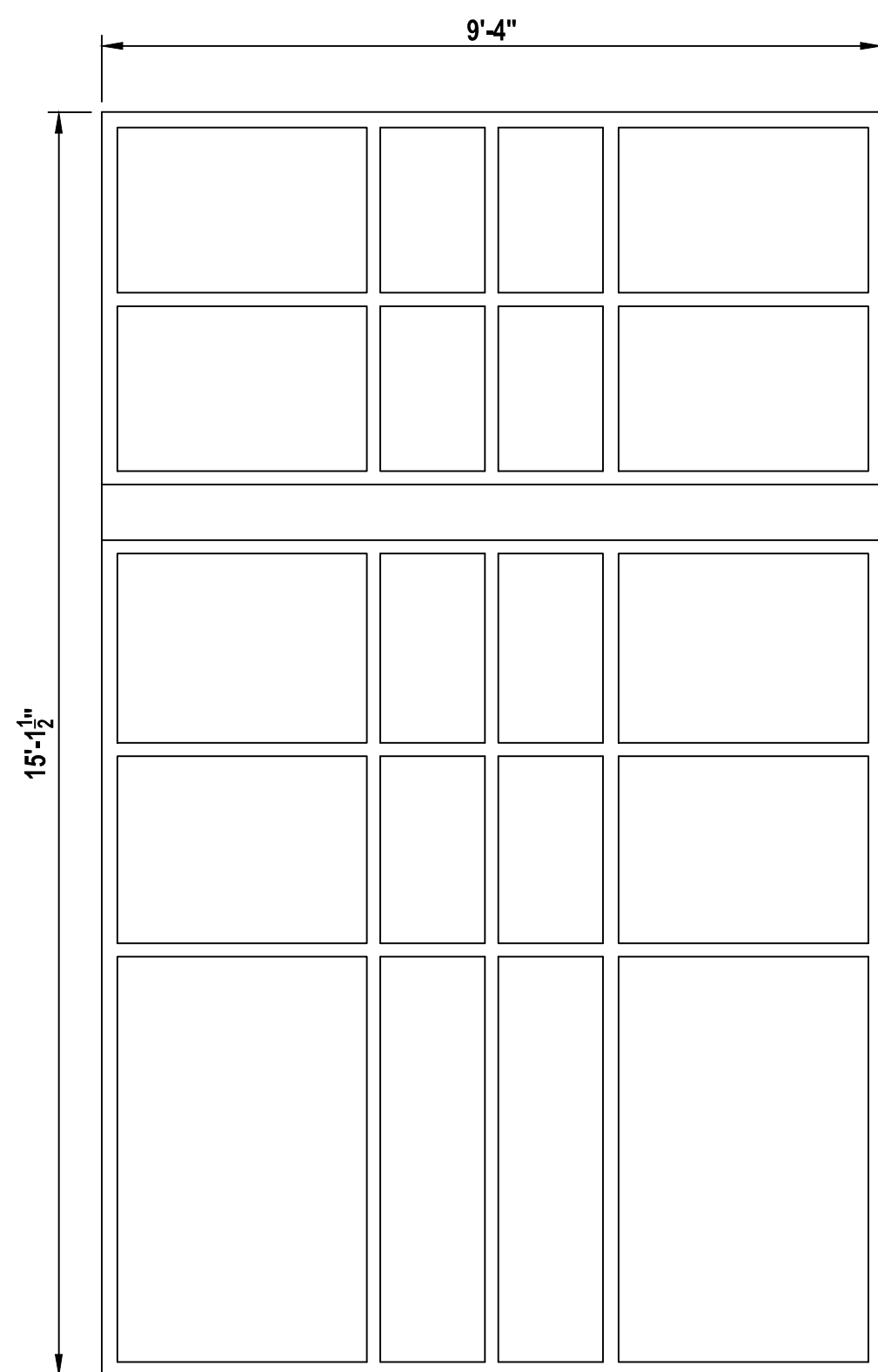
F



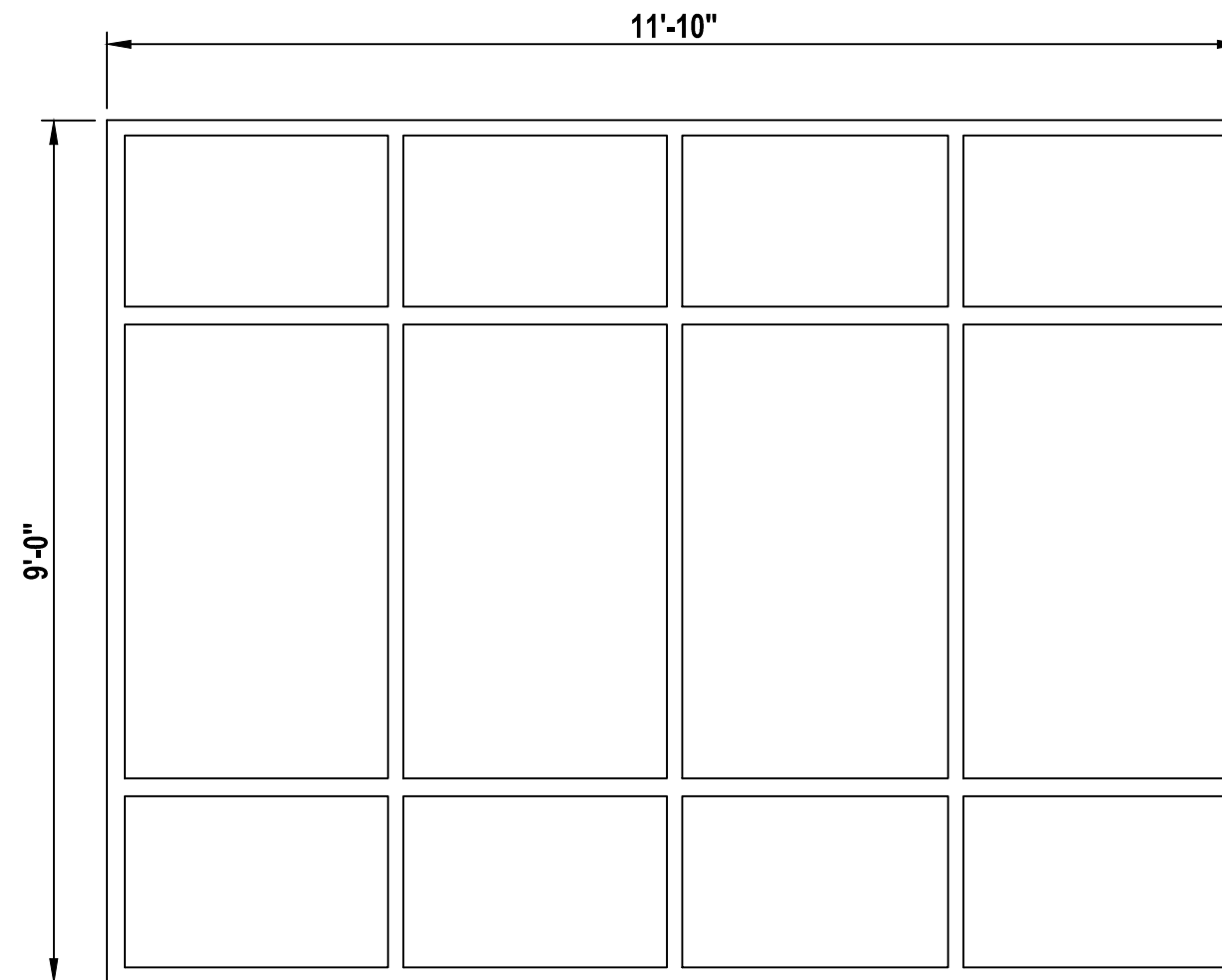
G



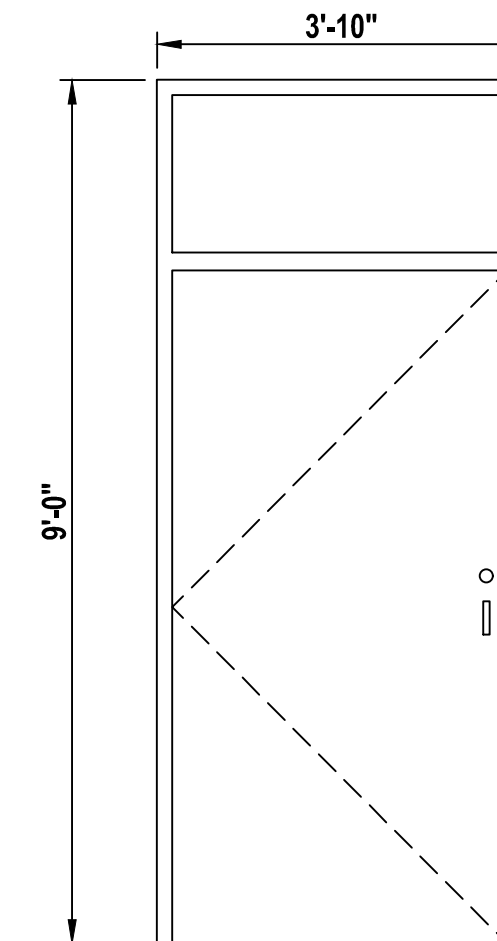
H



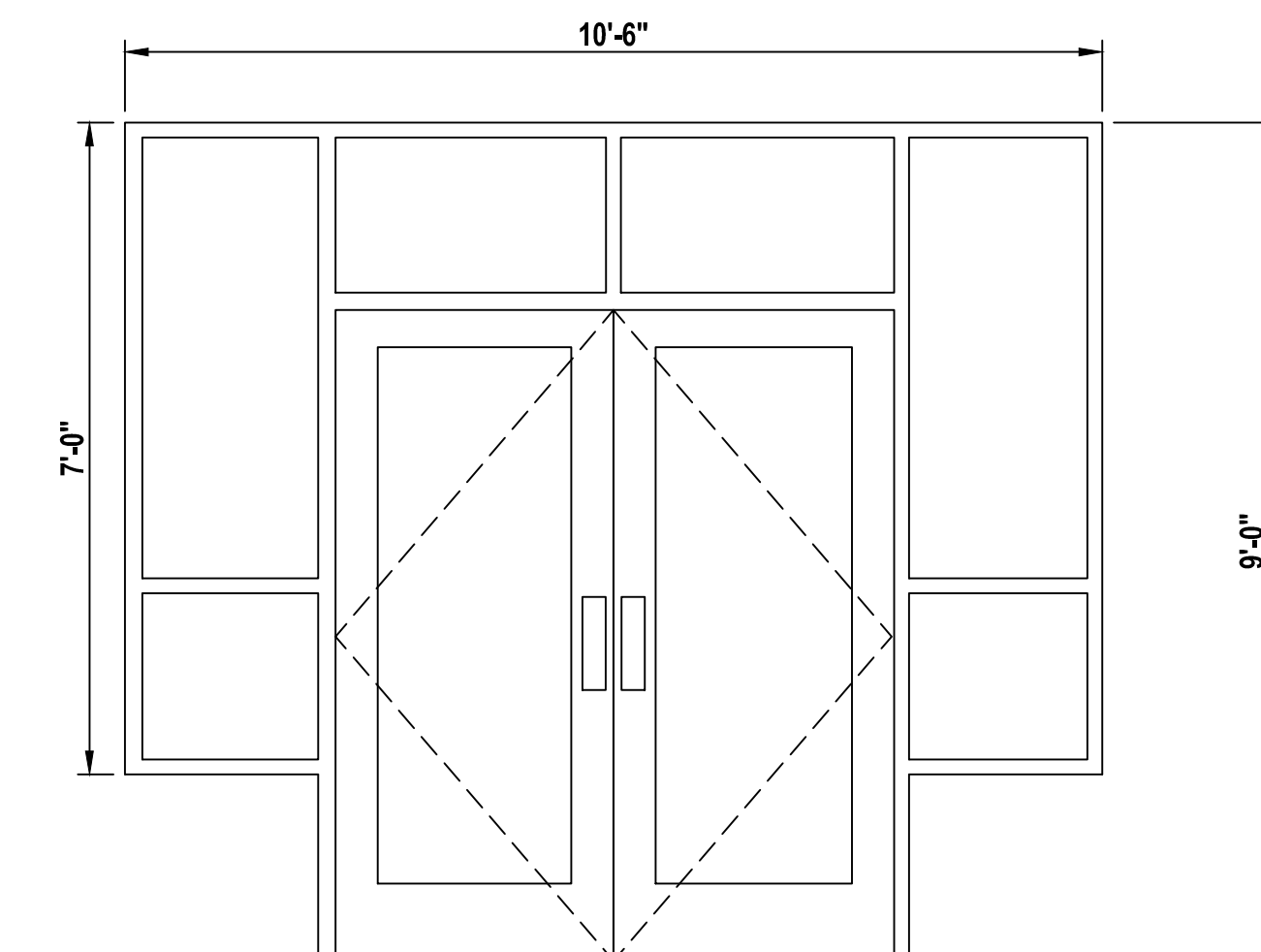
I



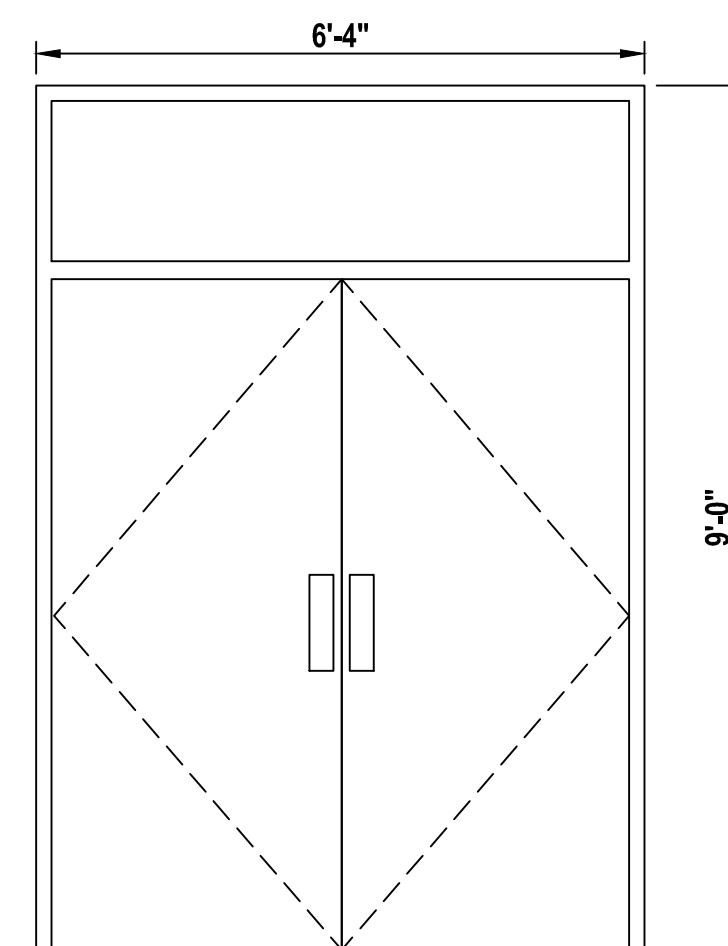
J



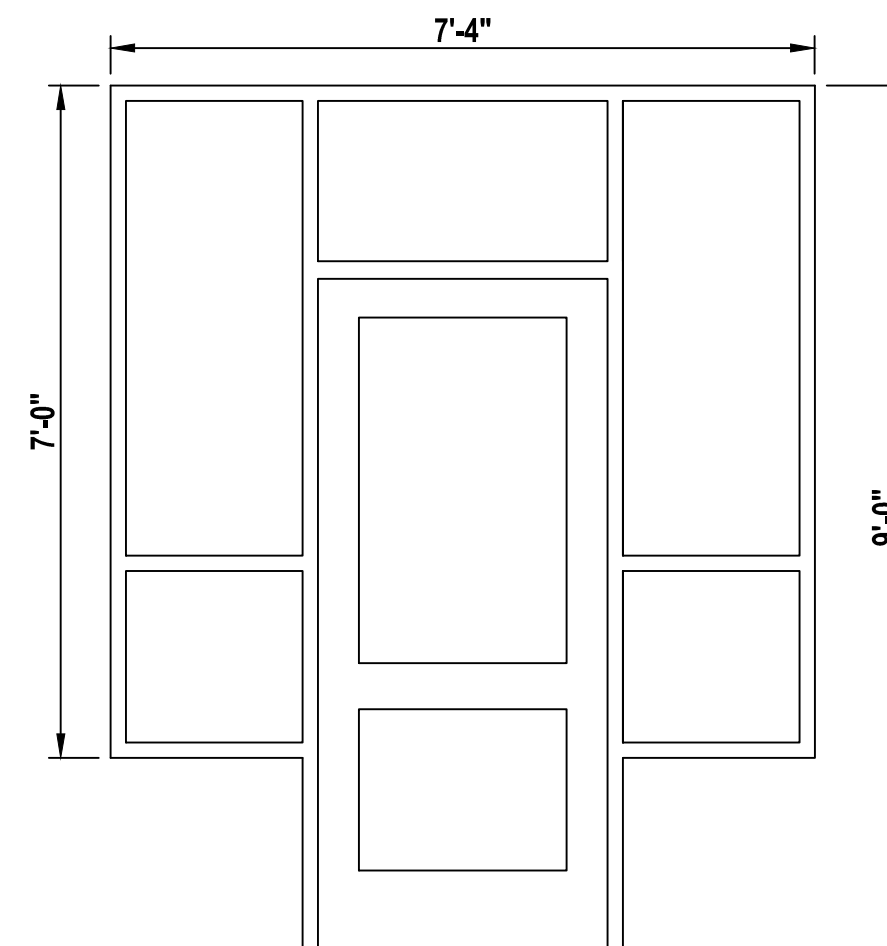
K



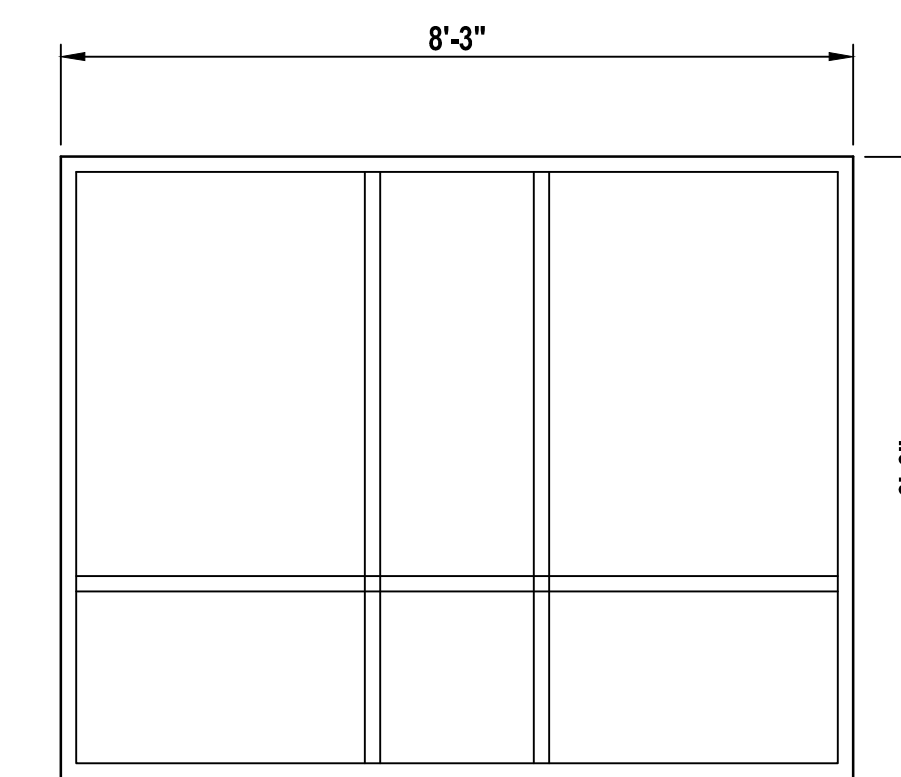
L



M

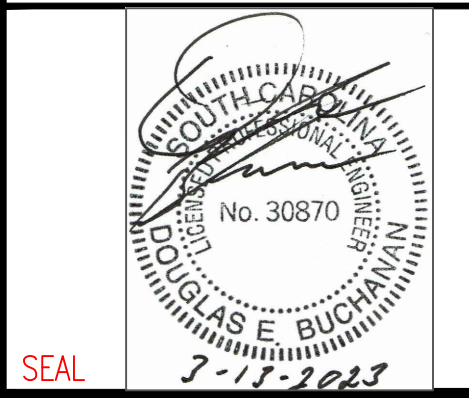


N



O

1 WINDOW / DOOR DETAILS  
C-4 SCALE: 1/2" = 1'



School Dist of  
Greenville County  
301 E Camperdown Way  
Greenville, SC 29601

OWNER  
**SEVIER MIDDLE SCHOOL**  
1000 PIEDMONT PARK ROAD  
GREENVILLE, SC 29609  
BUILDING ENVELOPE REPAIR

MARK	DATE	DESCRIPTION
	0-00-0000	XXXXXXXXXX

CAD DWG FILE:  
DRAWN BY: CDT  
CHK'D BY:  
DATE: 3-13-2023  
COPYRIGHT

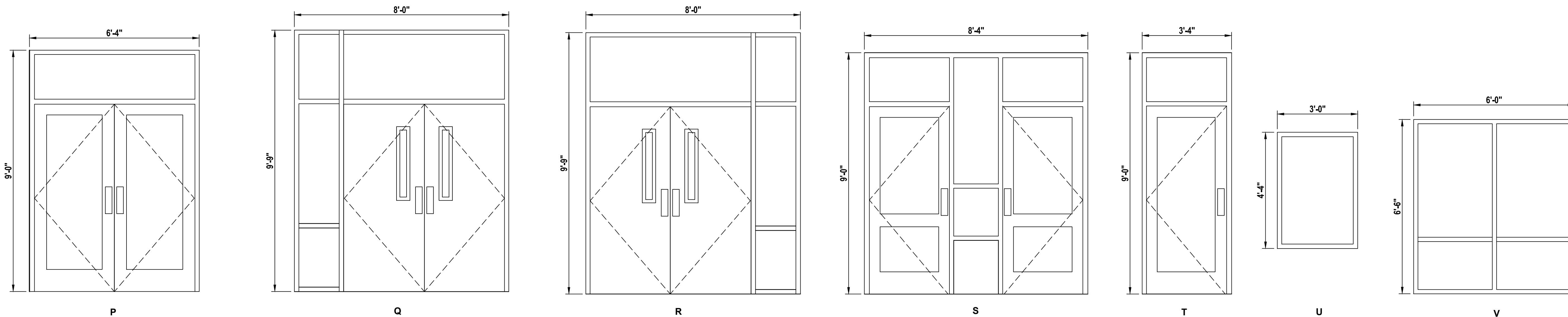
WINDOW/DOOR ELEVATIONS

SHEET TITLE

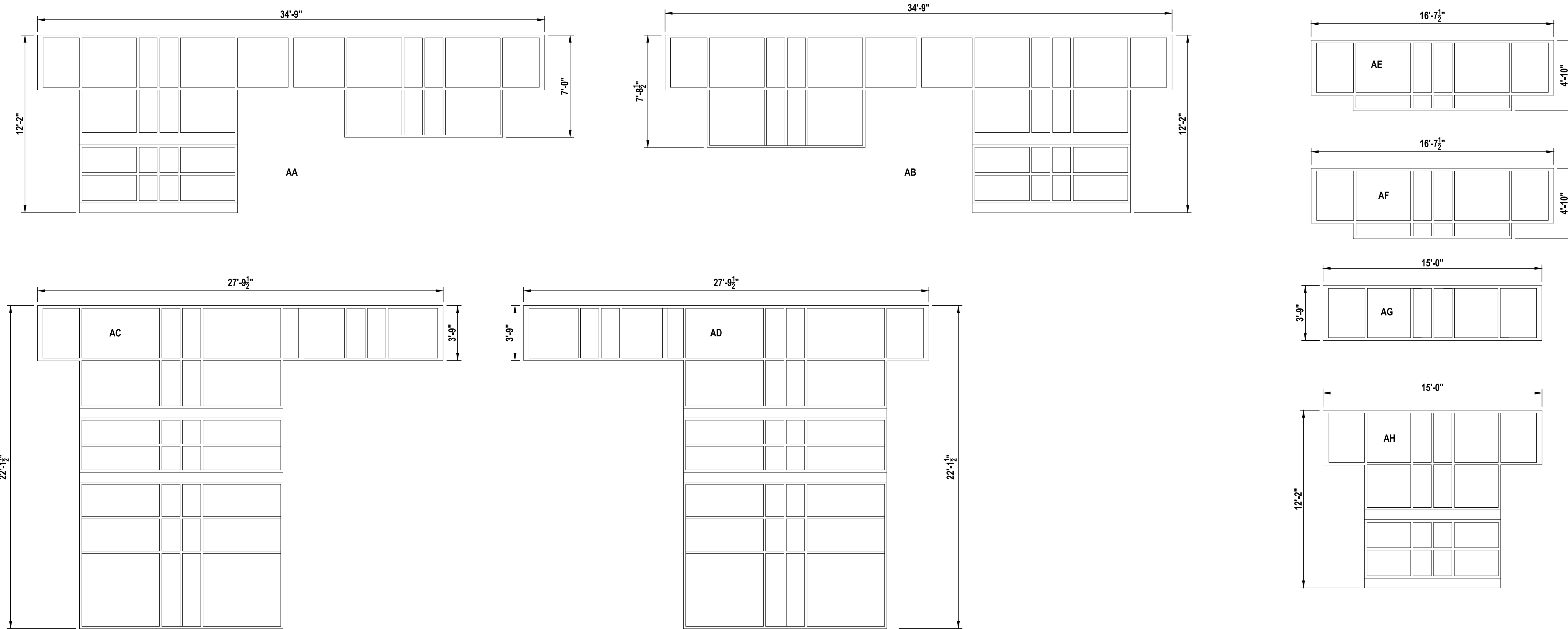
C-4

PAGE NUMBER

FOR CONSTRUCTION



**1 WINDOW / DOOR DETAILS**  
C-5 SCALE: 1/2" = 1'



**2 TURRET WINDOW / DOOR DETAILS**  
C-5 SCALE: 1/4" = 1'



School Dist of  
Greenville County  
301 E Camperdown Way  
Greenville, SC 29601

OWNER

SEVIER MIDDLE SCHOOL  
1000 PIEDMONT PARK ROAD  
GREENVILLE, SC 29609  
BUILDING ENVELOPE REPAIR

MARK	DATE	DESCRIPTION
	0-00-0000	XXXXXXXXXX

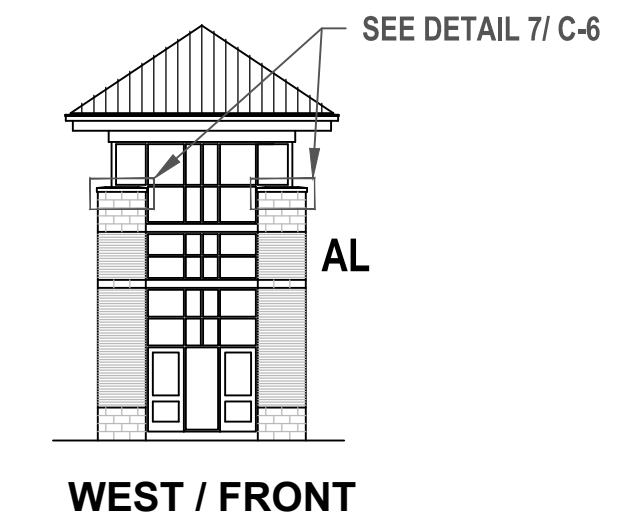
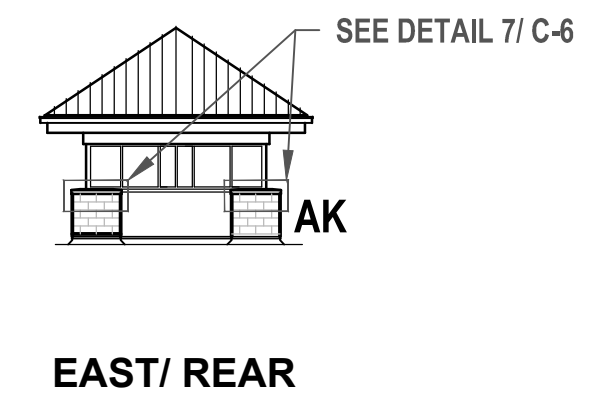
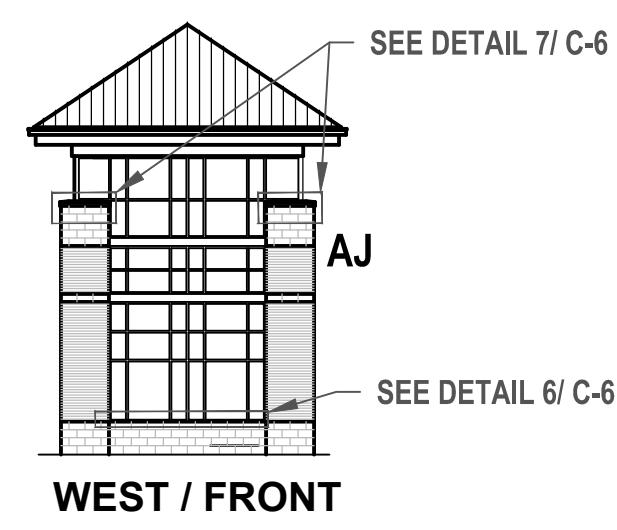
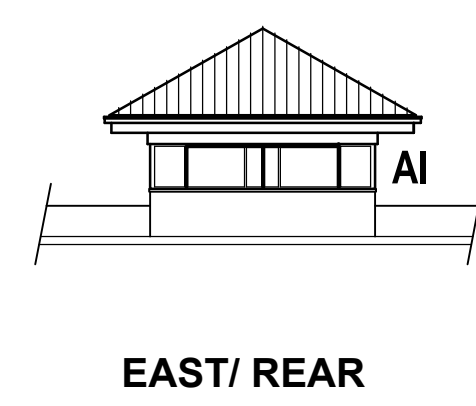
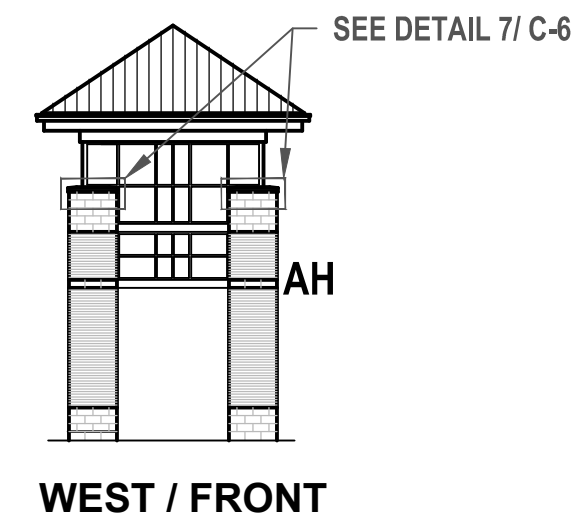
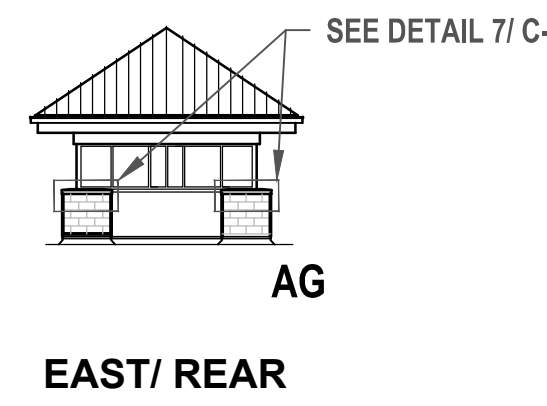
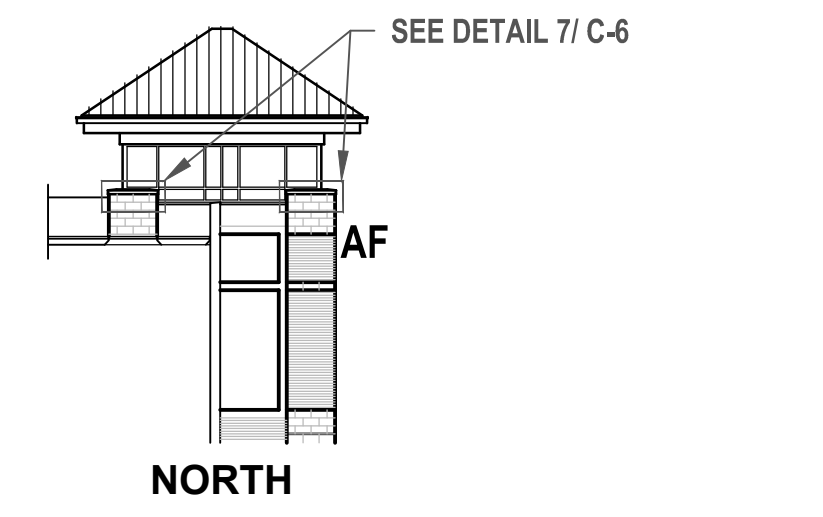
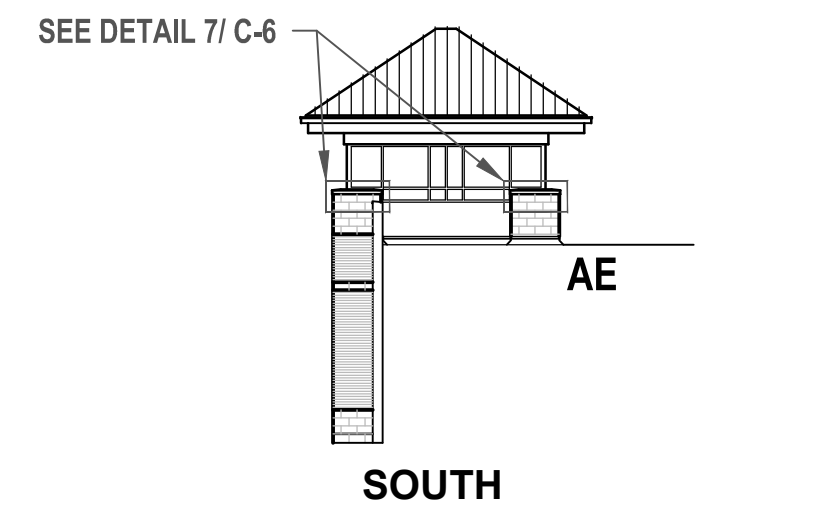
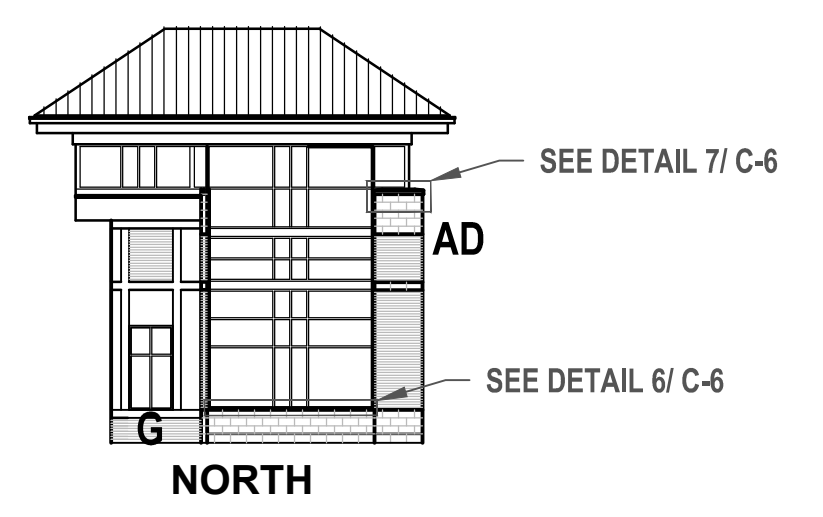
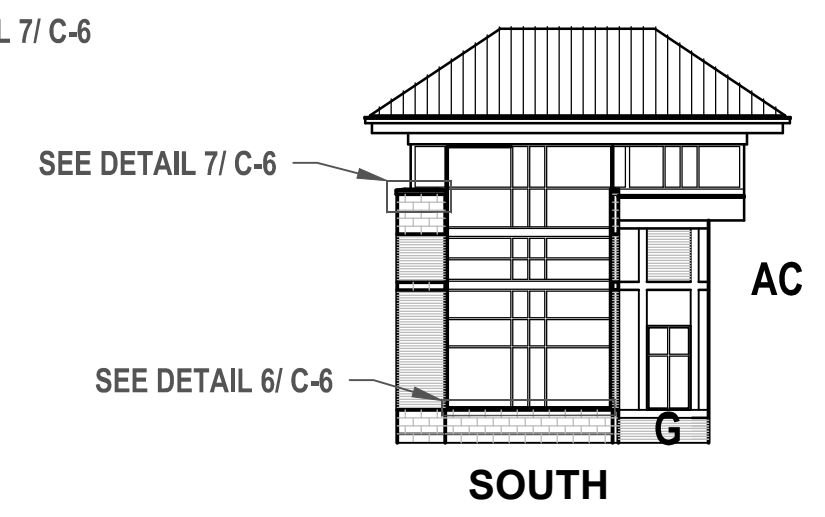
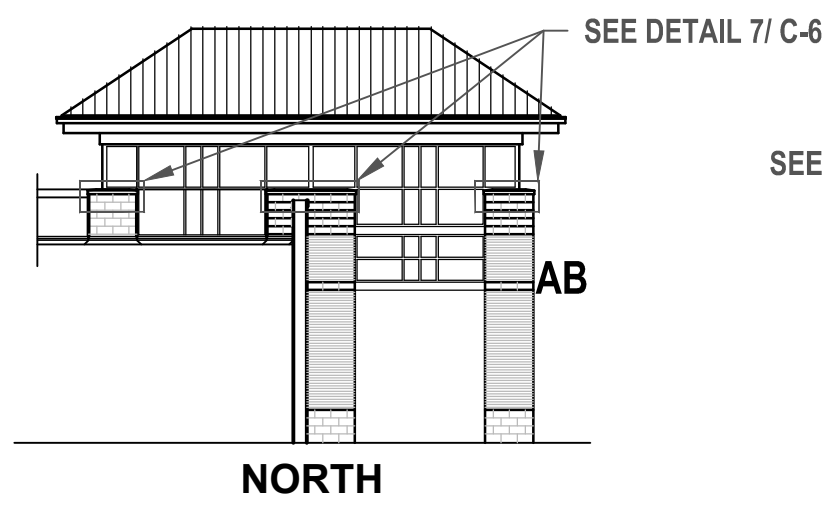
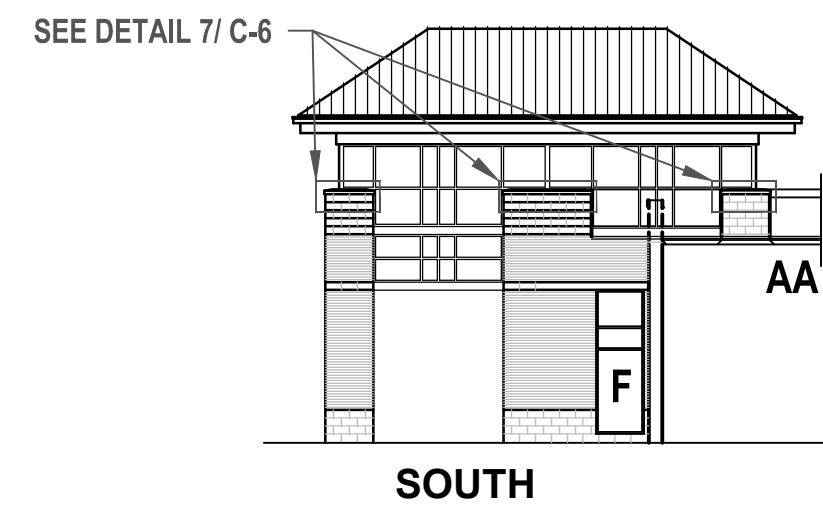
FILE:  
DRAWN BY: CDT  
DATE: 3-13-2023  
RIGHT

SHEET TITLE

C-5

PAGE NUMBER

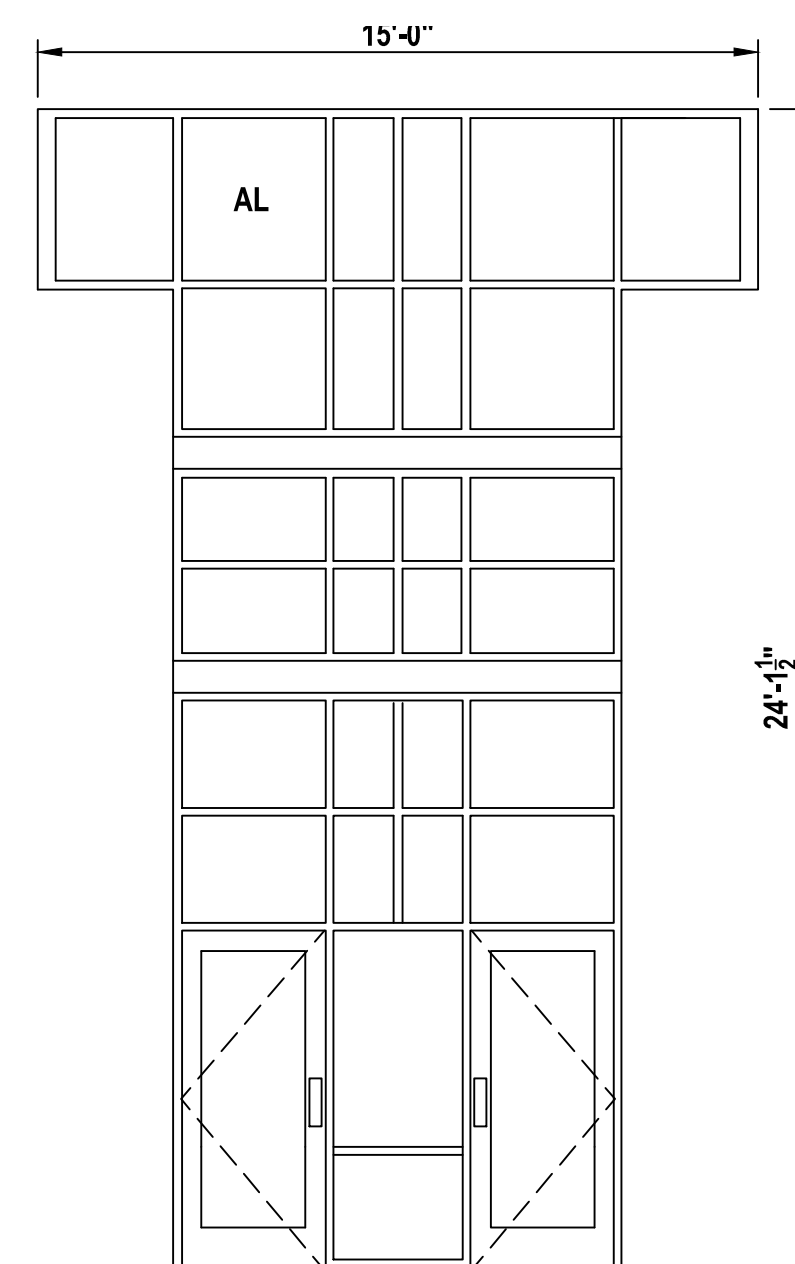
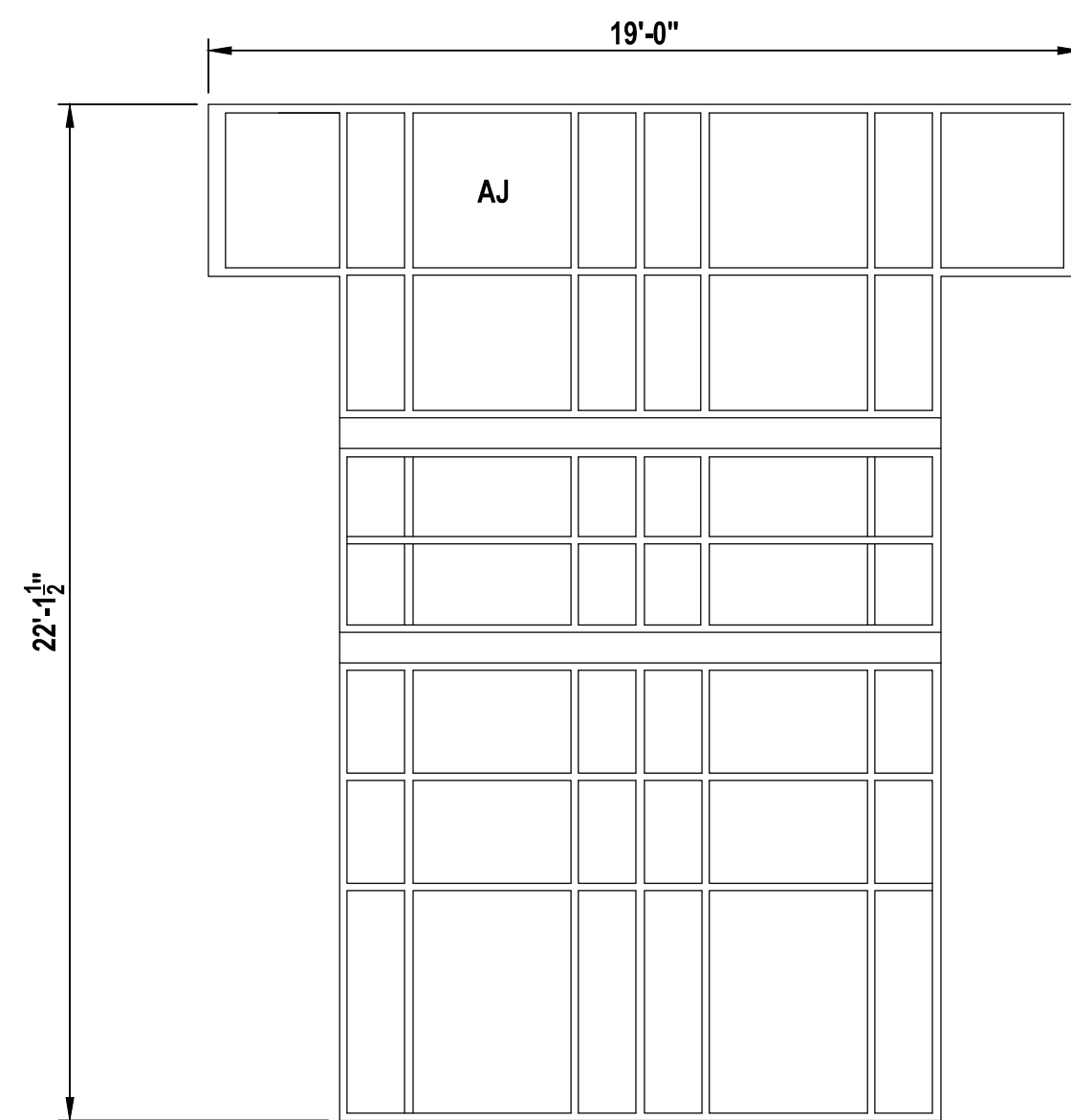
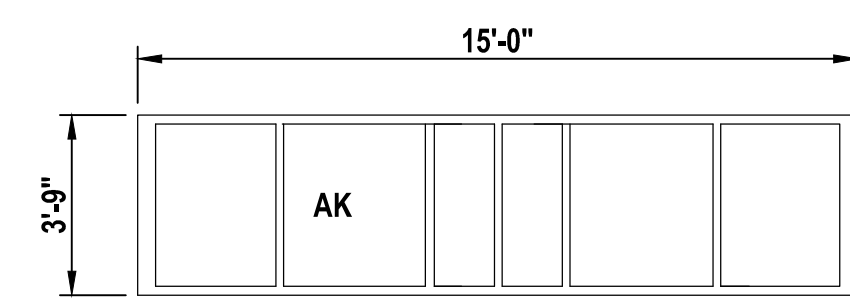
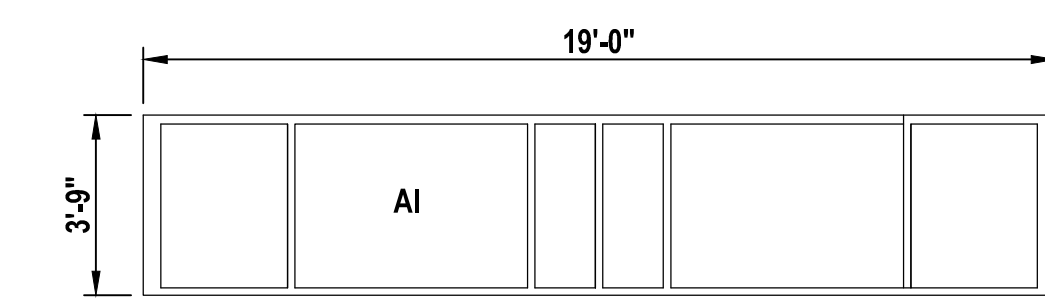




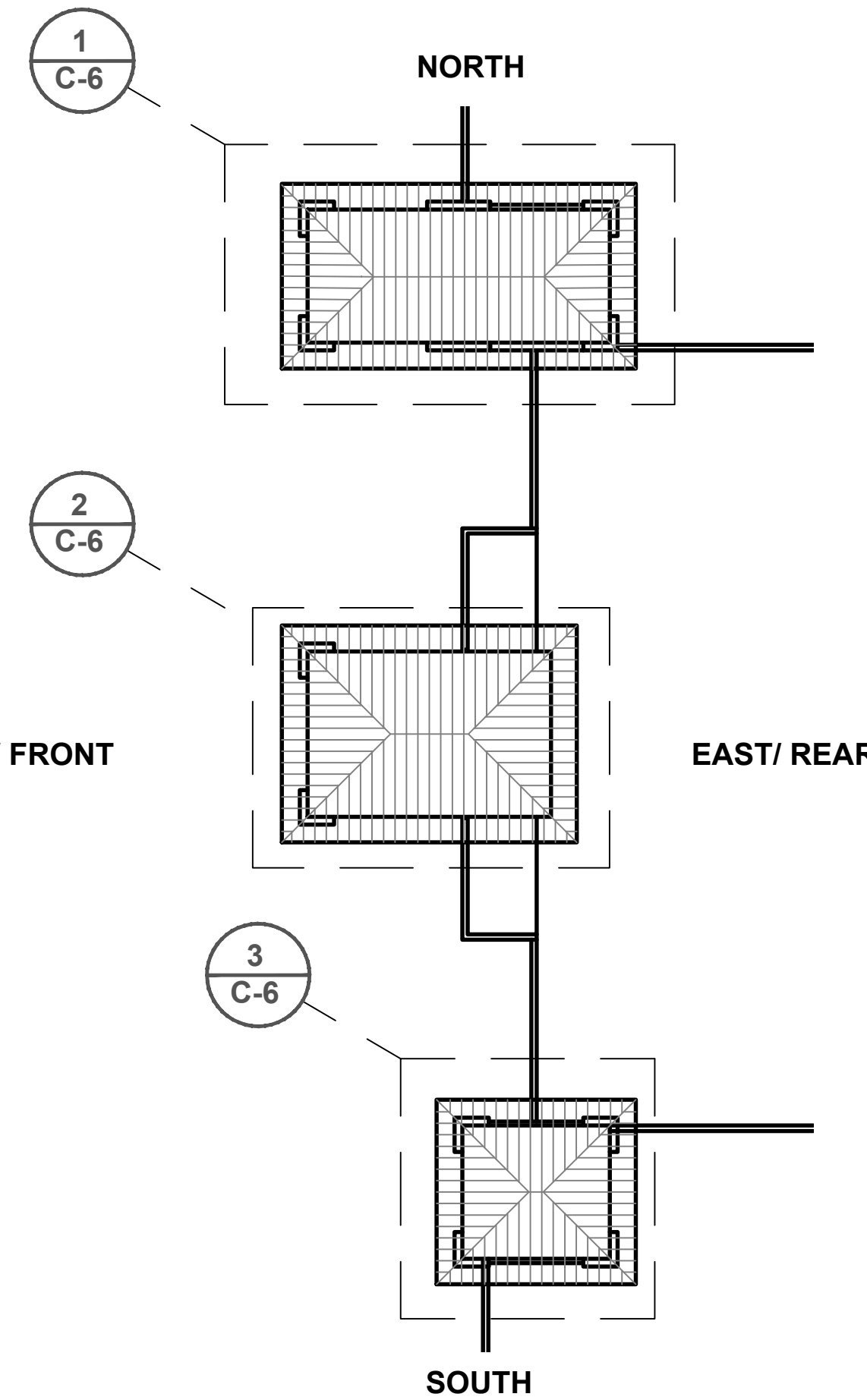
**1**  
C-6 LEFT ENTRY TURRET  
SCALE: 1/16" = 1'

**2**  
C-6 CENTER ENTRY TURRET  
SCALE: 1/16" = 1'

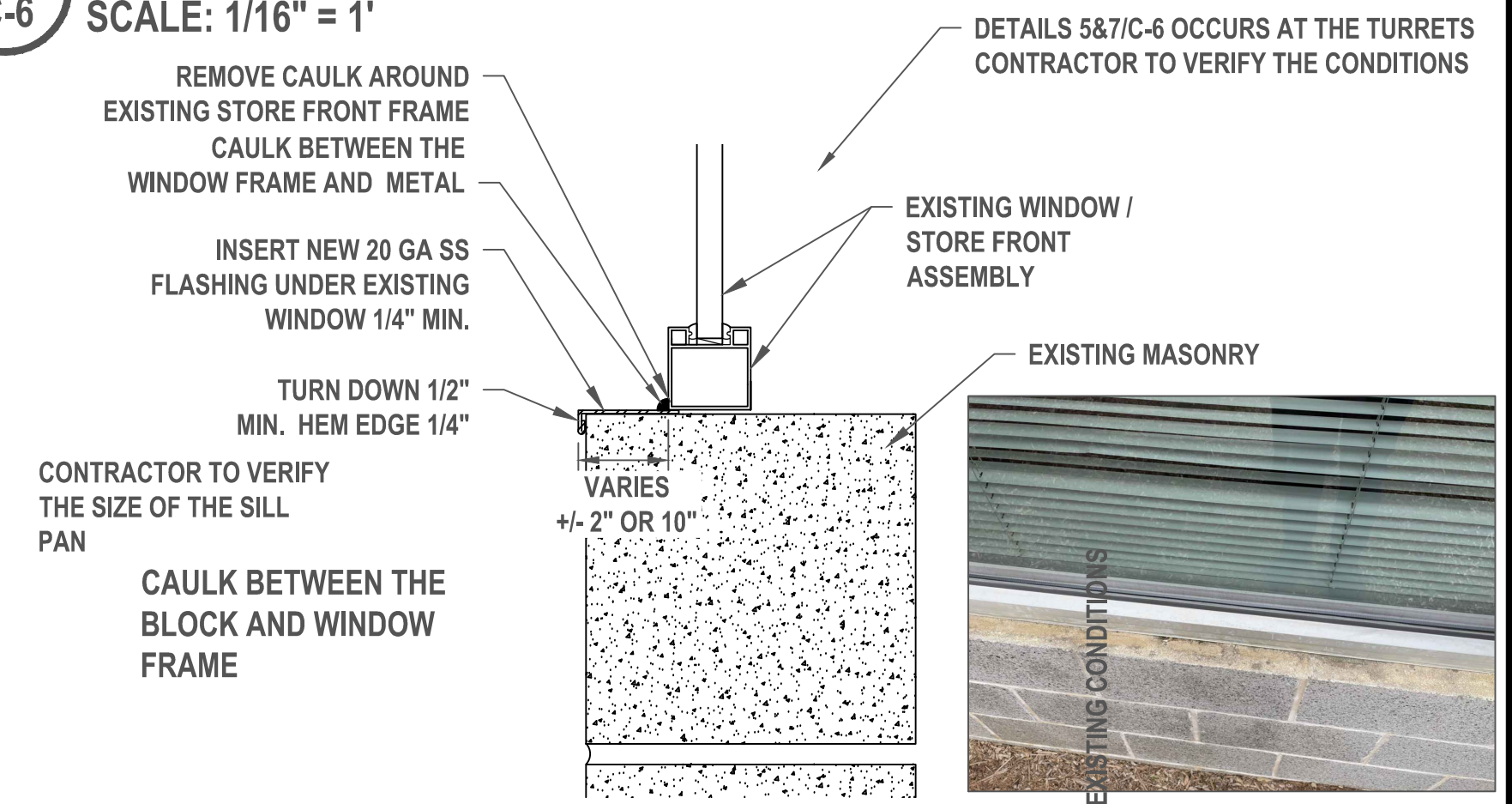
**3**  
C-6 RIGHT ENTRY TURRET  
SCALE: 1/16" = 1'



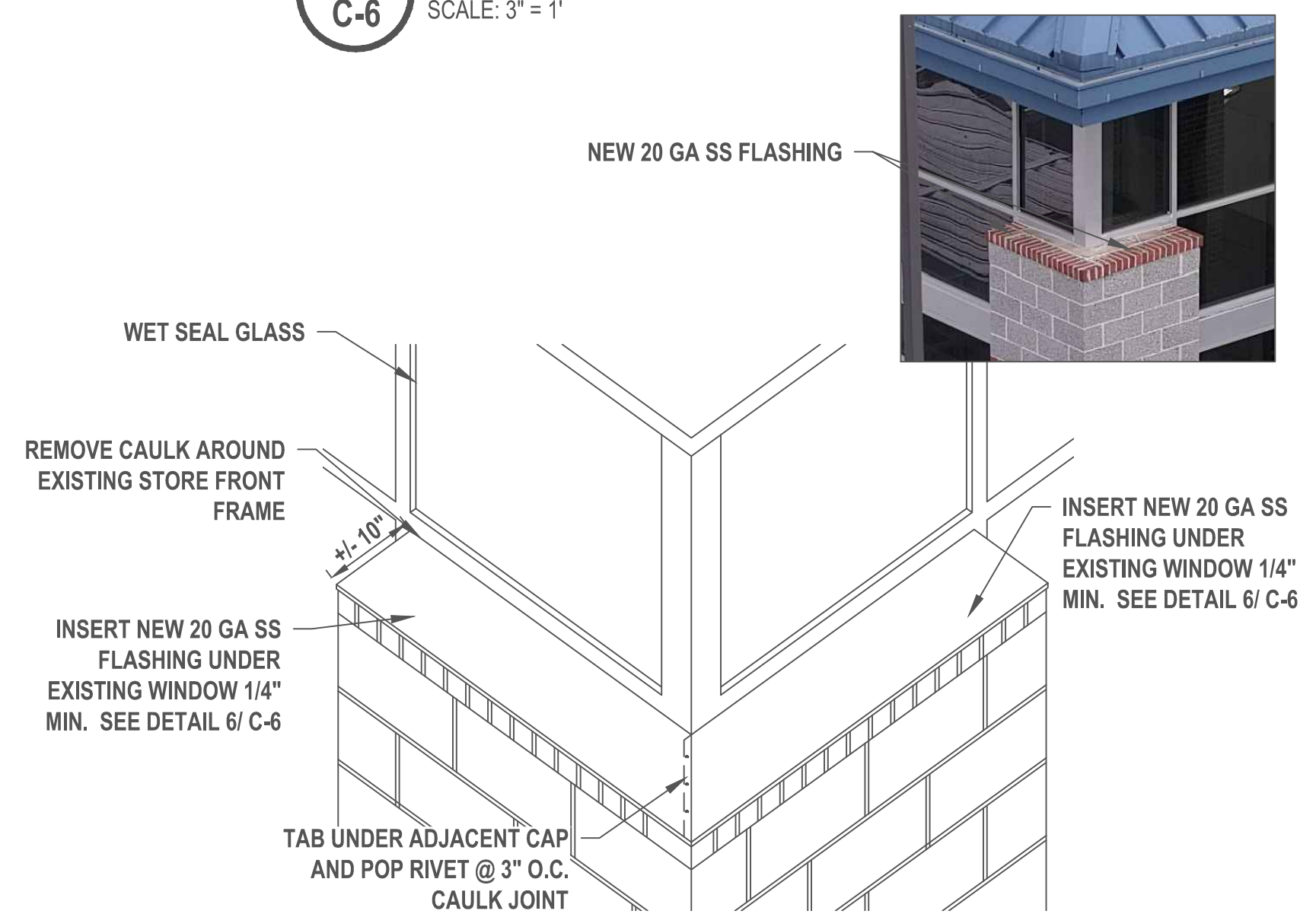
**4**  
C-6 TURRET WINDOW / DOOR DETAILS  
SCALE: 1/4" = 1'



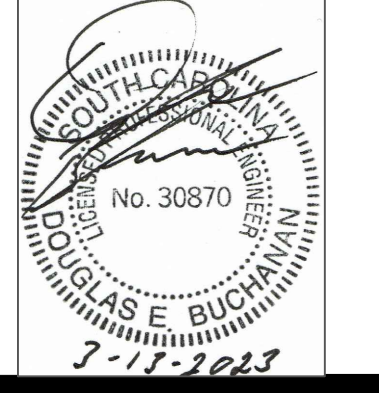
**5**  
C-6 DETAIL PLAN  
SCALE: NONE



**6**  
C-6 SILL PAN DETAIL  
SCALE: 3" = 1'



**7**  
C-6 SILL PAN DETAIL  
SCALE: 3" = 1'



School Dist of  
Greenville County  
301 E Camperdown Way  
Greenville, SC 29601

SEVIER MIDDLE SCHOOL  
1000 PIEDMONT PARK ROAD  
GREENVILLE, SC 29609  
BUILDING ENVELOPE REPAIR

MARK	DATE	DESCRIPTION
	0-00-0000	XXXXXXXXXX

CAD DWG FILE:  
DRAWN BY: CDT  
CHK'D BY:  
DATE: 3-13-2023  
COPYRIGHT

TURRET ELEVATIONS  
WINDOW / DOOR ELEV.

SHEET TITLE  
**C-6**  
PAGE NUMBER





REMOVE EXISTING PATCH- REMOVE THE RUST FROM THE STEEL, AND PATCH THE AREA

1 CONCRETE PATCH REPAIR - PRECAST SECTION  
C-7 SCALE: NONE



REPLACE EXPANSION JOINT SEALANT  
REMOVE THE DAMAGED CONCRETE AND REMOVE THE RUST AND PATCH THE CONCRETE. SEE 3C-7

2 CONCRETE REPAIR - PRECAST SECTION  
C-7 SCALE: NONE



EXPOSED STEEL - CONCRETE TO BE REPAIRED

3 ENLARGED CONCRETE REPAIR  
C-7 SCALE: NONE

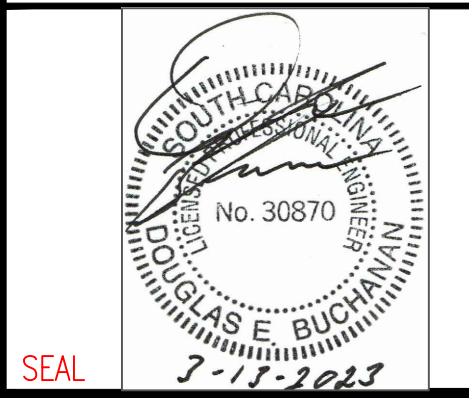


REMOVE AND REPLACE CAULK AND BACKER ROD

4 HORIZONTAL JOINT - PRECAST SECTION  
C-7 SCALE: NONE

NOTE :

1. THE INSIDE TOP CORNER OF THE PRECAST CONCRETE, THE REINFORCING STEEL HAS RUSTED AND WILL BE REPAIRED AS PART OF THE PROJECT.
  - a. THE CONTRACTOR SHALL REMOVE THE LOOSE CONCRETE, RUST FROM THE STEEL. THE CONCRETE SHALL BE CHIPPED OUT TO SOLID CONCRETE -MIN. OF 1/4" AROUND THE STEEL.
  - b. THE STEEL SHALL BE PAINTED WITH SHERMAN WILLIAMS FASTLINE PRIMER SURFACE AND SEALER OR EQUAL.
  - c. THE IN-BED AND CONCRETE SHALL BE PATCHED WITH RAMCRETE OR EQUAL. RAMCRETE SHALL BE MIXED, APPLIED AND CURED ACCORDING TO THE MANUFACTURER'S INSTRUCTIONS.
  - d. THE FINAL REPAIR SHALL BE FLUSH WITH THE EXISTING CONCRETE.
2. THE CONCRETE PATCH SHALL BE REMOVED AND
  - a. THE CONCRETE CHIPPED TO SOLID CONCRETE, MIN. 1/4".
  - b. THE CONTRACTOR SHALL REMOVE ANY RUST ON THE STEEL AND PAINTED WITH SHERMAN WILLIAMS FASTLINE PRIMER SURFACE AND SEALER OR EQUAL.
  - c. CONCRETE SHALL BE PATCHED WITH RAMCRETE OR EQUAL. RAMCRETE SHALL BE MIXED, APPLIED AND CURED ACCORDING TO THE MANUFACTURER'S INSTRUCTIONS.
  - d. THE FINAL REPAIR SHALL BE FLUSH WITH THE EXISTING CONCRETE.
3. THE CONTRACTOR SHALL CLEAN ANY OVERAGE AND THE GROUNDS OF ANY DEBRIS FROM THE OPERATIONS.



School Dist of  
Greenville County  
301 E Camperdown Way  
Greenville, SC 29601

OWNER

**SEVIER MIDDLE SCHOOL**  
**1000 PIEDMONT PARK ROAD**  
**GREENVILLE, SC 29609**  
**BUILDING ENVELOPE REPAIR**

MARK	DATE	DESCRIPTION
	0-00-0000	XXXXXXXXXX

CAD DWG FILE:  
DRAWN BY: CDT  
CHK'D BY:  
DATE: 3-13-2023  
COPYRIGHT

DETAILS

SHEET TITLE

C-7

PAGE NUMBER