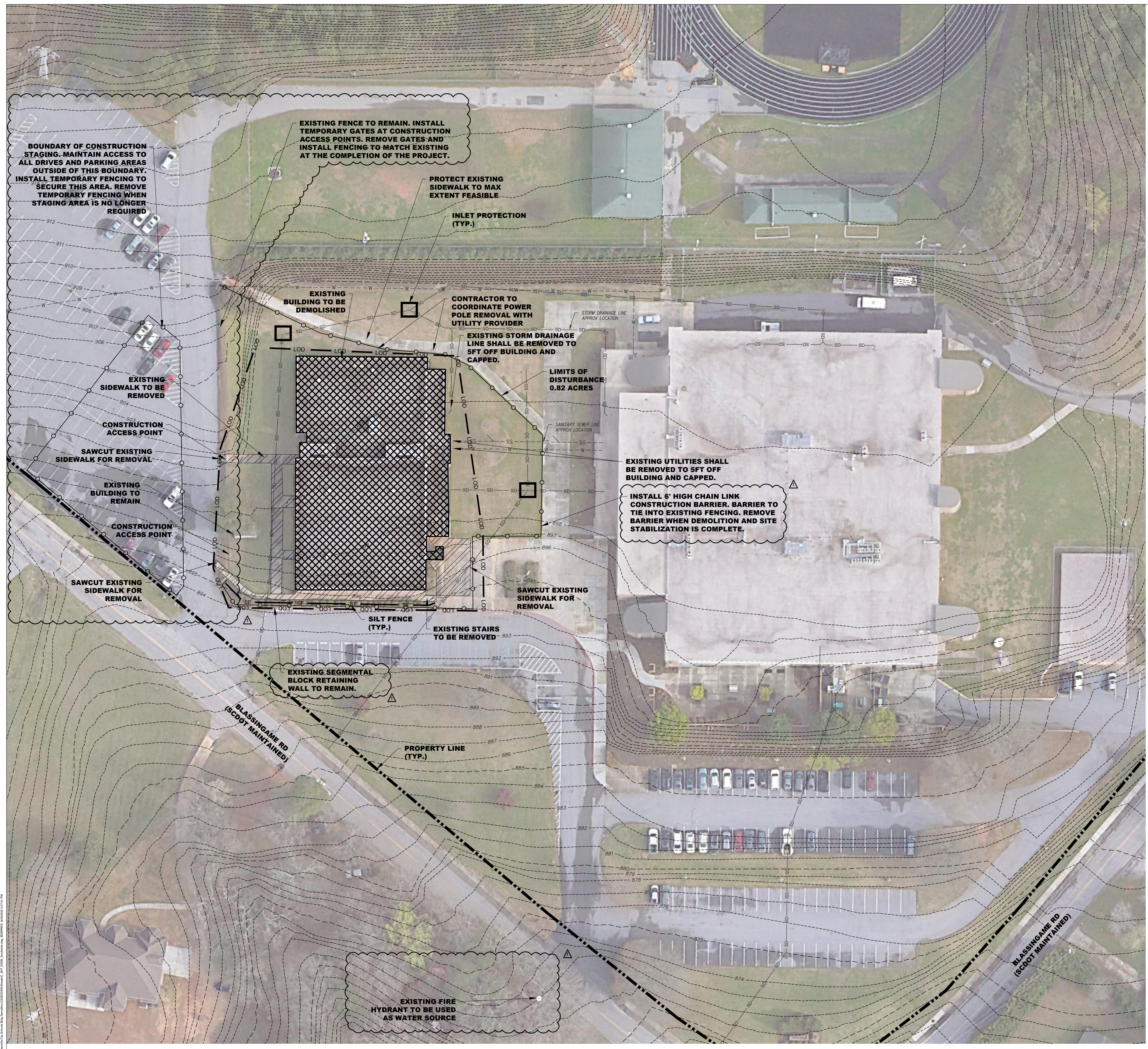


G:\2022 Projects\22030 - GCS Building Demolition Package\Drawings\4 - Construction Documents\East Gantt Elementary Demolition.rvt
 6/16/2022 4:05:20 PM



- NOTES:**
- REFER TO SHEET C100 FOR GENERAL NOTES AND LEGEND.
 - CONTRACTOR SHALL COORDINATE WITH LOCAL UTILITY PROVIDERS FOR RELOCATION AND DEMOLITION OF UTILITIES. CONTRACTOR TO INCLUDE A PRIVATE UTILITY LOCATE AROUND COMPLETE EXTENTS OF BUILDING TO BE REMOVED.
 - CONTRACTOR SHALL COORDINATE WITH OWNER ON PROPOSED LAYDOWN / MATERIAL STORAGE/ DUMPSTER LOCATIONS.
 - CONTRACTOR SHALL COORDINATE WITH OWNER ON EXISTING SITE ACCESS THROUGHOUT THE CONSTRUCTION OF THE PROJECT.

- GENERAL UTILITY NOTES:**
- THE CONTRACTOR IS RESPONSIBLE TO FIELD-VERIFY THE LOCATIONS AND SIZES OF ALL UTILITIES PRIOR TO CONSTRUCTION AND TO NOTE ANY CONFLICTS. ANY DAMAGE TO UTILITIES INCURRED DURING CONSTRUCTION IS THE RESPONSIBILITY OF THE CONTRACTOR AND IS TO BE REPAIRED AT THE CONTRACTOR'S EXPENSE. THE CONTRACTOR SHALL BE RESPONSIBLE FOR ALL COSTS RESULTING FROM ANY DAMAGE TO UTILITIES INCLUDING LOSS OF UTILITY REVENUE. THE CONTRACTOR SHALL CALL THE SOUTH CAROLINA 811 CENTER AT (888) 721-7877 AND UTILITY OWNER IN ORDER TO LOCATE EXISTING UTILITIES BEFORE DIGGING.
 - PRIOR TO BEGINNING CONSTRUCTION, REVIEW THIS PLAN WITH THEIR TRADES AND NOTIFY ARCHITECT/ENGINEER OF ANY UTILITY CONNECTION DISCREPANCIES.
 - CONTRACTOR SHALL PROVIDE THE UTILITY PROVIDER WITH A MINIMUM OF FORTY-EIGHT (48) HOURS NOTICE PRIOR TO ANY WORK ON THE PROJECT.
 - CONTRACTOR SHALL ARRANGE FOR TEMPORARY SUPPORT OF EXISTING UTILITIES, SUCH AS POLES, CONDUITS, FIBER OPTIC CABLES, TELEPHONE CABLES, WATER LINES, SEWER LINES, STORM LINES, AND ETC.
 - CONTRACTOR SHALL COORDINATE ANY NECESSARY RELOCATION OF ALL EXISTING OVERHEAD AND UNDERGROUND UTILITIES WITH THE RESPECTIVE COMPANIES.

NOTICE TO CONTRACTOR

- PRIOR TO CONSTRUCTION, DIGGING, OR EXCAVATION THE CONTRACTOR IS RESPONSIBLE FOR LOCATING ALL UNDERGROUND UTILITIES (PUBLIC OR PRIVATE) THAT MAY EXIST AND CROSS THROUGH THE AREA(S) OF CONSTRUCTION, WHETHER INDICATED ON THE PLANS OR NOT. CALL "811" A MINIMUM OF 72 HOURS PRIOR TO DIGGING OR EXCAVATING. REPAIRS TO ANY UTILITY DAMAGED RESULTING FROM CONSTRUCTION ACTIVITIES SHALL BE THE RESPONSIBILITY OF THE CONTRACTOR.



F

CRAIG GAULDEN DAVIS

- Architecture
- Planning
- Interiors

19 Washington Park
 Greenville, SC 29601
 Phone 864-242-0761
 Fax 864-501-9945
 Email cgd@gdarch.com

E

COPYRIGHT © 2022 CRAIG GAULDEN & DAVIS, INC. ALL RIGHTS RESERVED

THIS COPYRIGHTED DOCUMENT AND ALL INFORMATION CONTAINED HEREIN IS AN INSTRUMENT OF SERVICE AND SHALL NOT BE REPRODUCED, ALTERED, OR REUSED IN PART OR IN WHOLE WITHOUT PRIOR WRITTEN PERMISSION FROM THE ARCHITECT. THIS DRAWING IS THE EXCLUSIVE PROPERTY OF THE ARCHITECT AND MUST BE RETURNED UPON REQUEST.

D

CONSULTANT

WK DICKSON
 community infrastructure consultants

1320 MAIN STREET
 SUITE 400
 COLUMBIA, SC 29201
 (803) 786-4261
 WWW.WKDICKSON.COM
 WKD PROJECT NO.: 20220226.00.CA

C

GREENVILLE COUNTY SCHOOLS

301 E. CAMPERDOWN WAY, GREENVILLE, SC 29601

B

BUILDING DEMOLITION PACKAGE OLD SOUTHSIDE HIGH GYM

100 BLASSINGAME RD, GREENVILLE, SC 29605

DATE	MARK	DESCRIPTION
09/26/22	△	PER ADDENDA 1

A

ISSUE: CONSTRUCTION DOCUMENTS
 DATE: July 29, 2022
 PROJECT NO: 22030
 DRAWN BY: BAD
 CHECKED BY: CWC

DEMOLITION PLAN

C103

