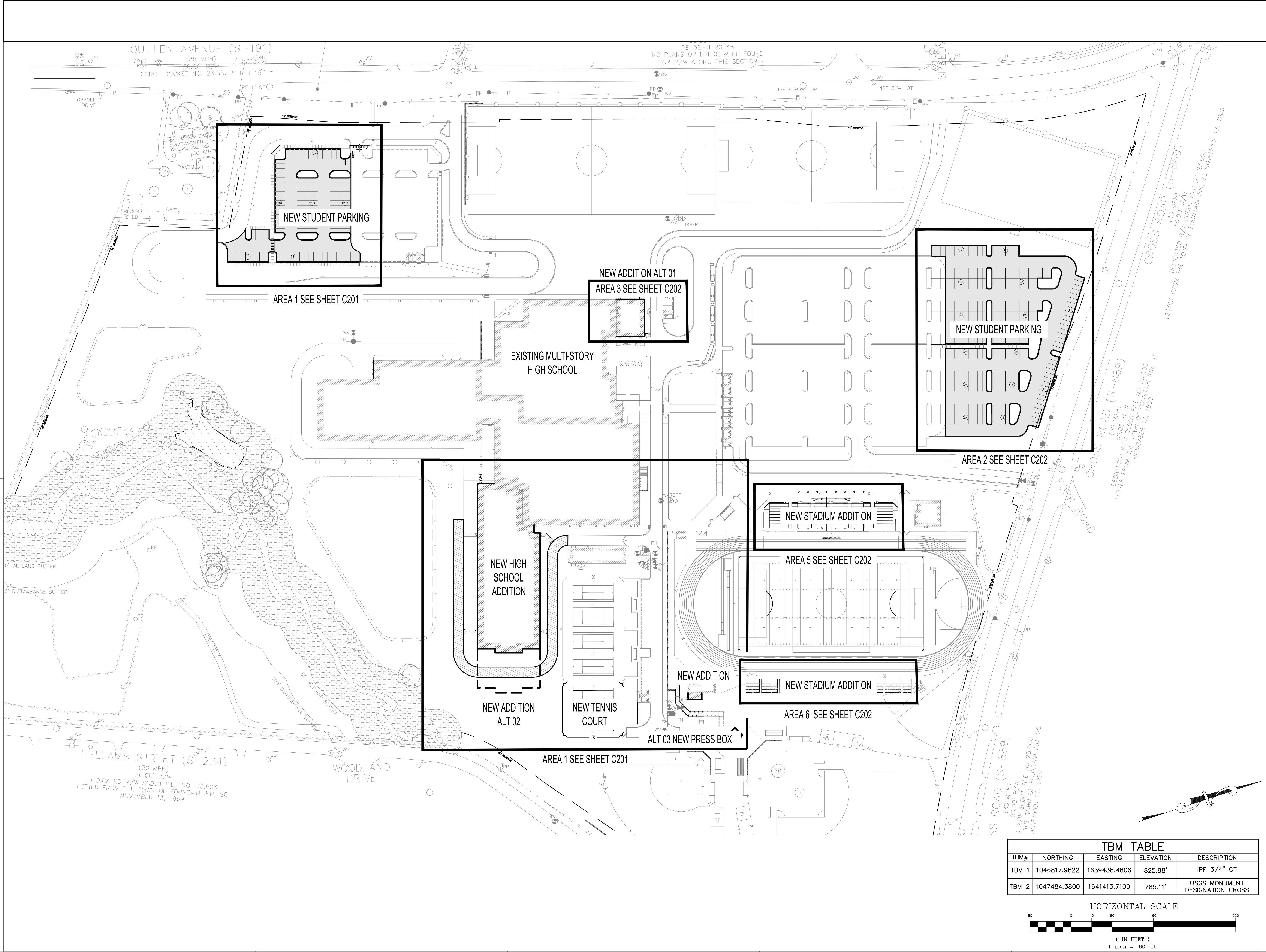


D  
C  
B  
A



QUILLEN AVENUE (S-191)  
(35 MPH)  
50.00' R/W  
SCDOT DOCKET NO. 23.382 SHEET 15

PB 32-H PG 48  
NO PLANS OR DEEDS WERE FOUND  
FOR R/W ALONG THIS SECTION

CROSS ROAD (S-889)  
(30 MPH)  
50.00' R/W  
LETTER FROM THE TOWN OF FOUNTAIN INN, SC NOVEMBER 13, 1969

FORK ROAD  
D, R/W SCODT FILE NO. 23.603  
NOVEMBER 13, 1969

SS ROAD (S-889)  
(30 MPH)  
50.00' R/W  
D, R/W SCODT FILE NO. 23.603  
NOVEMBER 13, 1969

HELLAMS STREET (S-234)  
(30 MPH)  
50.00' R/W  
DEDICATED R/W SCODT FILE NO. 23.603  
LETTER FROM THE TOWN OF FOUNTAIN INN, SC  
NOVEMBER 13, 1969

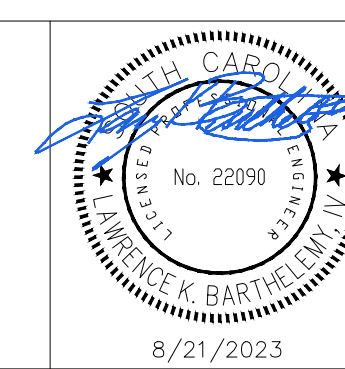
WOODLAND DRIVE

**CRAIG GAULDEN DAVIS**

● Architecture  
Planning  
Interiors  
2002 Clipper Park Rd Suite 201  
Baltimore, MD 21211  
Phone 410.237.7115

COPYRIGHT © 2021 CRAIG GAULDEN & DAVIS, INC.  
ALL RIGHTS RESERVED

THIS COPYRIGHTED DOCUMENT AND ALL INFORMATION CONTAINED HEREIN IS AN INSTRUMENT OF SERVICE AND SHALL NOT BE REPRODUCED, ALTERED, OR REUSED IN PART OR IN WHOLE WITHOUT PRIOR WRITTEN PERMISSION FROM THE ARCHITECT. THIS DRAWING IS THE EXCLUSIVE PROPERTY OF THE ARCHITECT AND MUST BE RETURNED UPON REQUEST.



CONSULTANT  
**ADC**  
**ENGINEERING**  
CHARLESTON\COLUMBIA\GREENVILLE  
25 WOODS LAKE ROAD,  
SUITE 210  
GREEVILLE, SC 29607  
ph: 864-751-9121  
[WWW.ADCENGINEERING.COM](http://WWW.ADCENGINEERING.COM)

**GREENVILLE COUNTY SCHOOLS**

**FOUNTAIN INN HIGH SCHOOL ADDITION**

600 QUILLEN AVENUE  
FOUNTAIN INN, SC

DATE	MARK	DESCRIPTION

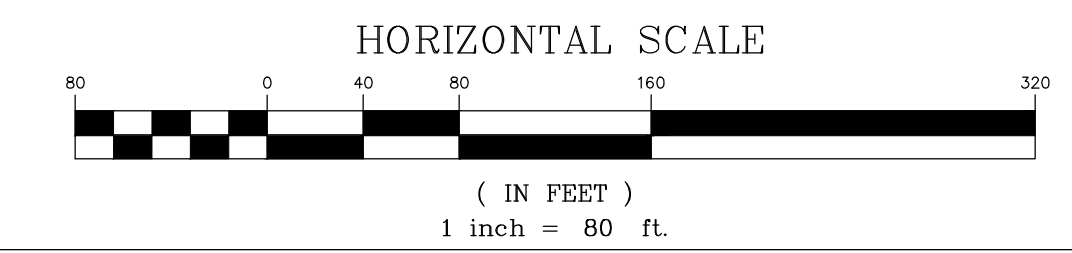


ISSUE:	SCHEMATIC DESIGN
DATE:	08/21/2023
PROJECT NO:	23121
DRAWN BY:	LKB
CHECKED BY:	LKB

**OVERALL SITE PLAN**

**C002**

TBM TABLE				
TBM#	NORTHING	EASTING	ELEVATION	DESCRIPTION
TBM 1	1046817.9822	1639438.4806	825.98'	IPF 3/4" CT
TBM 2	1047484.3800	1641413.7100	785.11'	USGS MONUMENT DESIGNATION CROSS



1 2 3 4 5

D  
C  
B  
A

NEW BUILDING  
LOWER  
F.F.E. = 809.0

NEW HIGH  
SCHOOL  
ADDITION

NEW BATHROOM STADIUM ADDITION

ALT 02: 250 STUDENT ADDITION

TENNIS COURT ADDITION

ALT 03: NEW PRESS BOX BUILDING

AREA 1

1

2



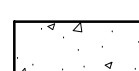



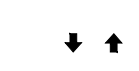



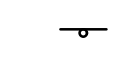

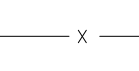


3

4

**SITE NOTES:**

- SEE SHEET C001 FOR CIVIL NOTES AND ABBREVIATIONS.

**CIVIL LEGEND - SITE**

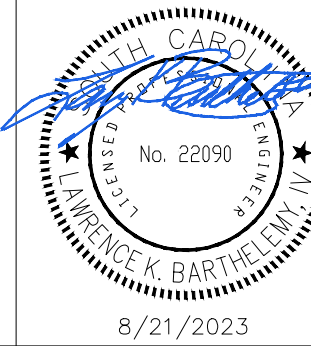
-  STANDARD DUTY ASPHALT PAVEMENT - INSTALL IAW DETAIL -/C62\_-
-  HEAVY DUTY ASPHALT PAVEMENT - INSTALL IAW DETAIL -/C62\_-
-  CONCRETE SIDEWALK - INSTALL IAW DETAIL -/C62\_-
-  ACCESSIBLE PARKING SPACE AND AISLE - INSTALL IAW DETAIL -/C62\_-
-  CROSSWALK (THERMOPLASTIC) - INSTALL IAW DETAIL -/C621\_-
-  24" STOP BAR (THERMOPLASTIC) - INSTALL IAW DETAIL -/C62\_-
-  INTERIOR TRAFFIC ARROW - INSTALL IAW DETAIL -/C62\_-
-  SINGLE GATE - INSTALL IAW LANDSCAPE PLANS.
-  DOUBLE GATE - INSTALL IAW LANDSCAPE PLANS.
-  HIGHWAY/DRIVEWAY TRAFFIC ARROW (THERMOPLASTIC) - INSTALL IAW DETAIL -/C62\_-
-  NEW TRAFFIC SIGN - INSTALL PER PLAN AND IAW DETAILS -/C62\_-
-  PARKING SPACES - STRIPE WITH 4" SINGLE WHITE SOLID LINE
-  CHAIN LINK FENCE - INSTALL IAW LANDSCAPE PLANS.
-  PROPERTY LINE
-  LIMITS OF CONSTRUCTION/LIMITS OF DISTURBANCE

**CRAIG GAULDEN DAVIS**

● Architecture  
Planning  
Interiors  
2002 Clipper Park Rd Suite 201  
Baltimore, MD 21211  
Phone 410.237.7115

COPYRIGHT © 2021 CRAIG GAULDEN & DAVIS, INC. ALL RIGHTS RESERVED

THIS COPYRIGHTED DOCUMENT AND ALL INFORMATION CONTAINED HEREIN IS AN INSTRUMENT OF SERVICE AND SHALL NOT BE REPRODUCED, ALTERED, OR REUSED IN PART OR IN WHOLE WITHOUT PRIOR WRITTEN PERMISSION FROM THE ARCHITECT. THIS DRAWING IS THE EXCLUSIVE PROPERTY OF THE ARCHITECT AND MUST BE RETURNED UPON REQUEST.



CONSULTANT  
**ADC**  
ENGINEERING  
CHARLESTON\COLUMBIA\GREENVILLE  
25 WOODS LAKE ROAD,  
SUITE 210  
GREEVILLE, SC 29607  
ph: 864-751-9121  
[WWW.ADCENGINEERING.COM](http://WWW.ADCENGINEERING.COM)

**GREENVILLE COUNTY SCHOOLS**

**FOUNTAIN INN HIGH SCHOOL ADDITION**

600 QUILLEN AVENUE  
FOUNTAIN INN, SC

DATE	MARK	DESCRIPTION

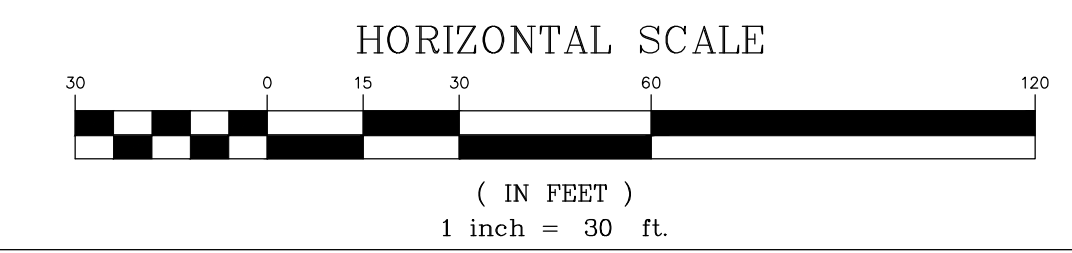


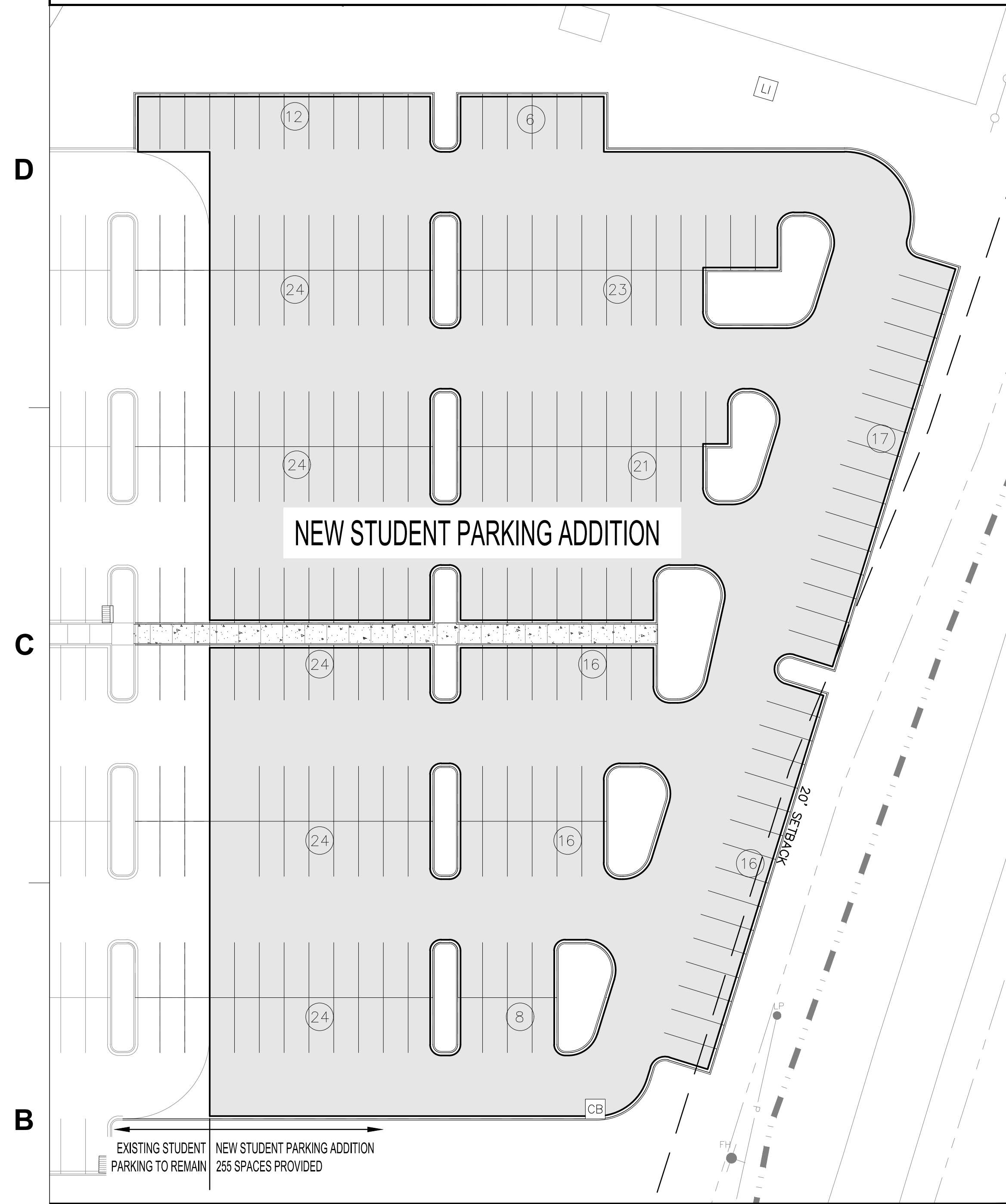
ISSUE:	SCHEMATIC DESIGN
DATE:	08/21/2023
PROJECT NO:	23121
DRAWN BY:	LKB
CHECKED BY:	LKB

**SITE PLAN BLOW UPS**

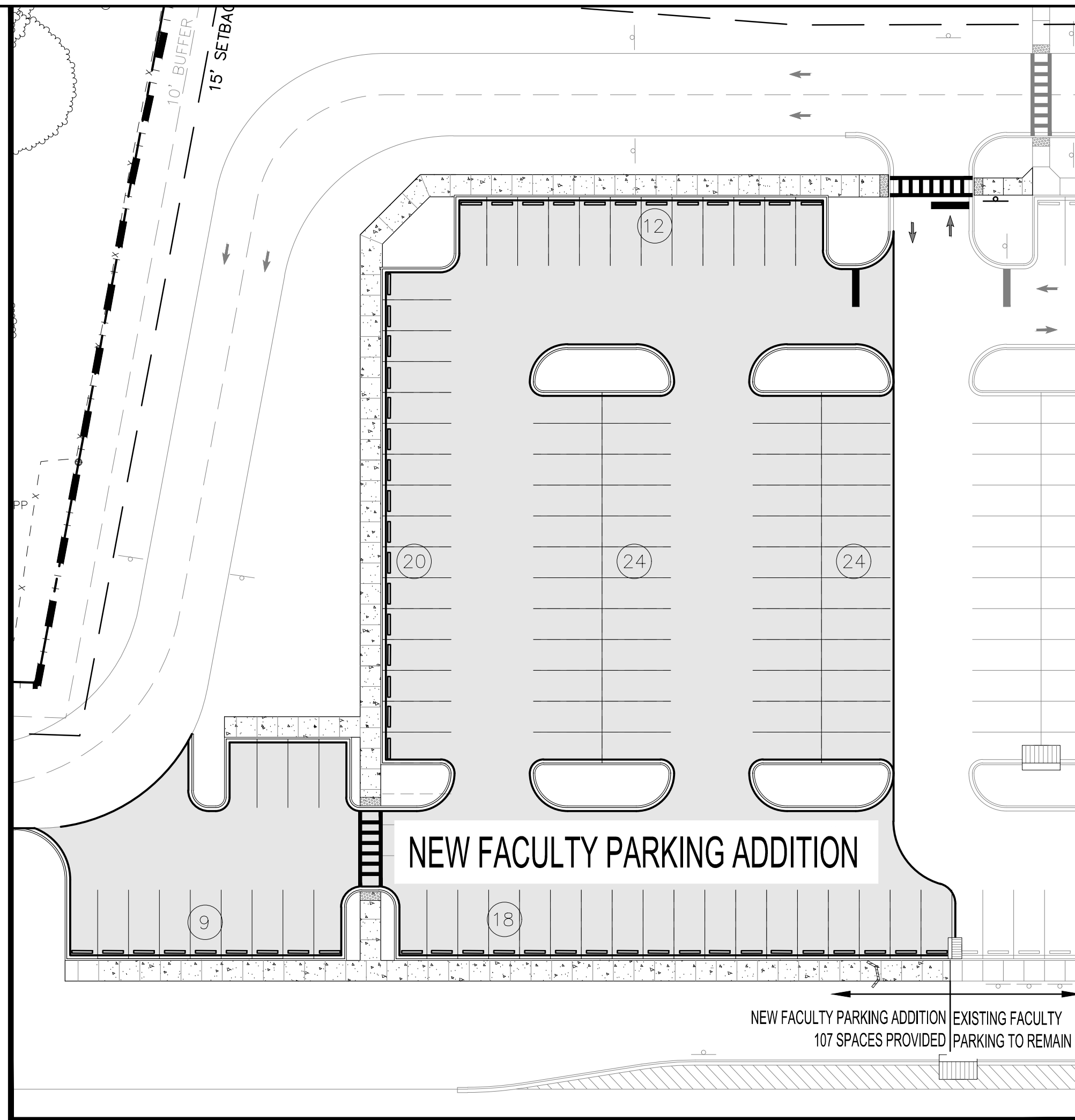
**C201**

TBM#	NORTHING	EASTING	ELEVATION	DESCRIPTION
TBM 1	1046817.9822	1639438.4806	825.98'	IPF 3/4" CT
TBM 2	1047484.3800	1641413.7100	785.11'	USGS MONUMENT DESIGNATION CROSS

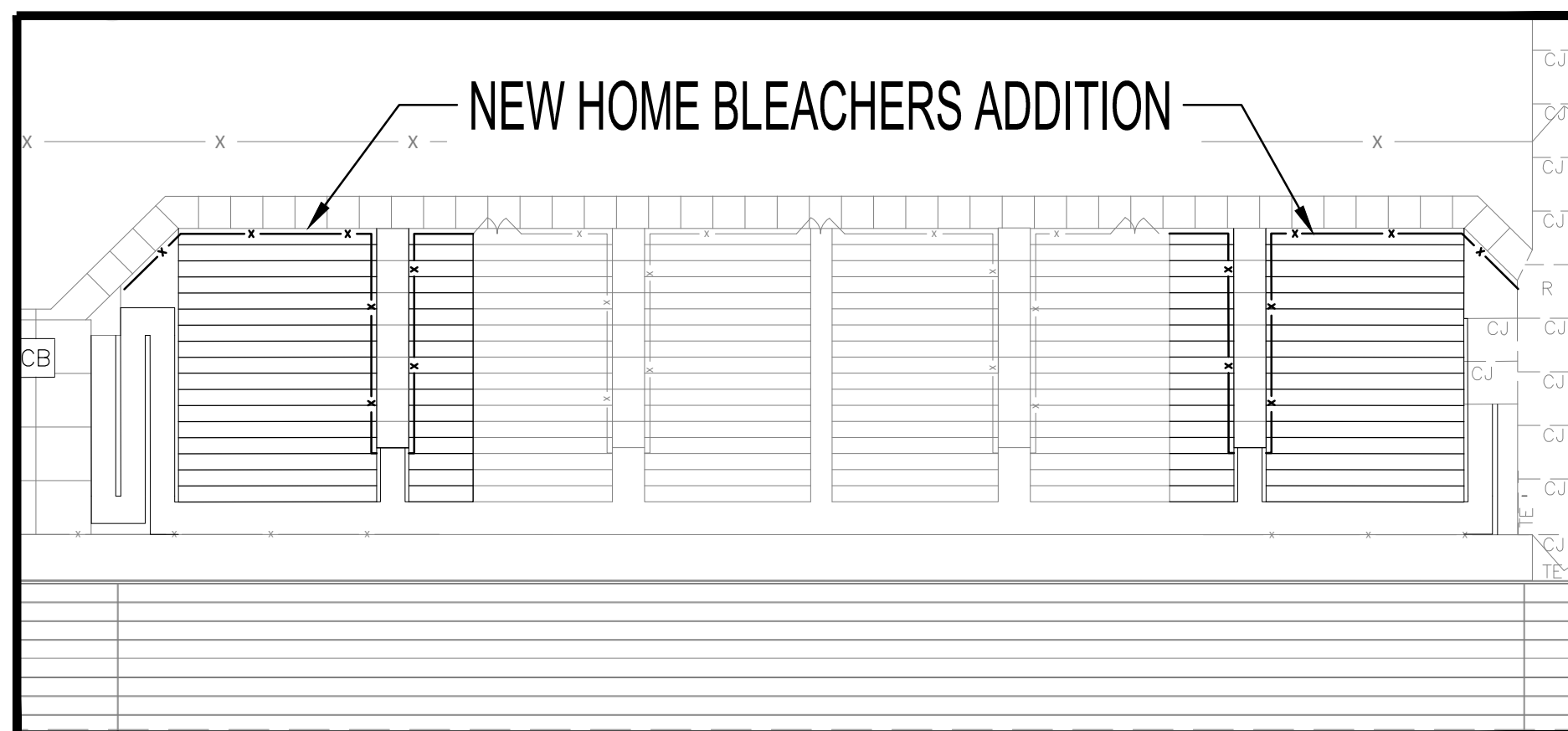




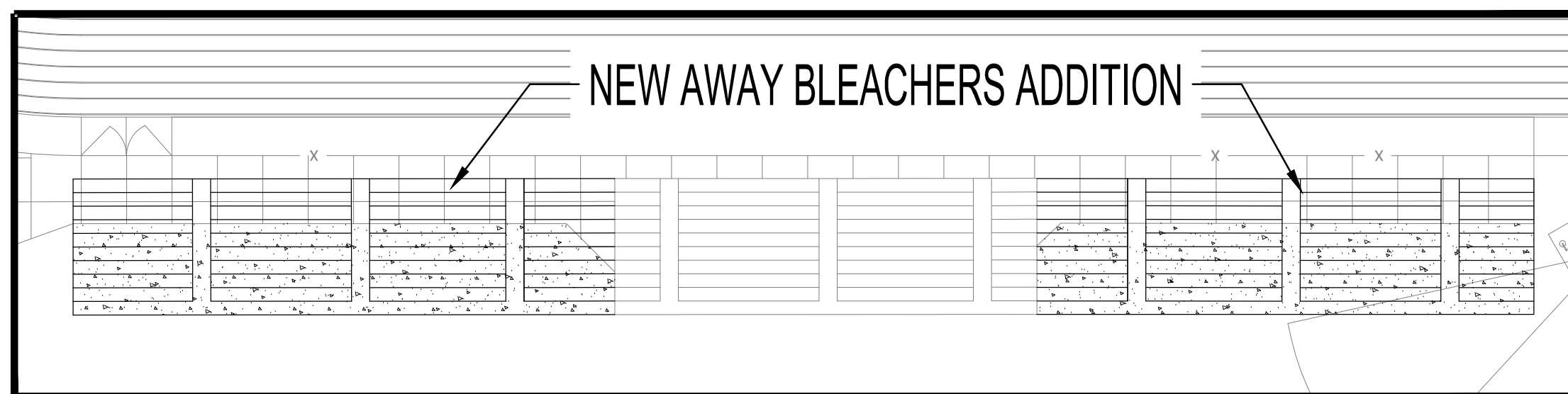
AREA 2



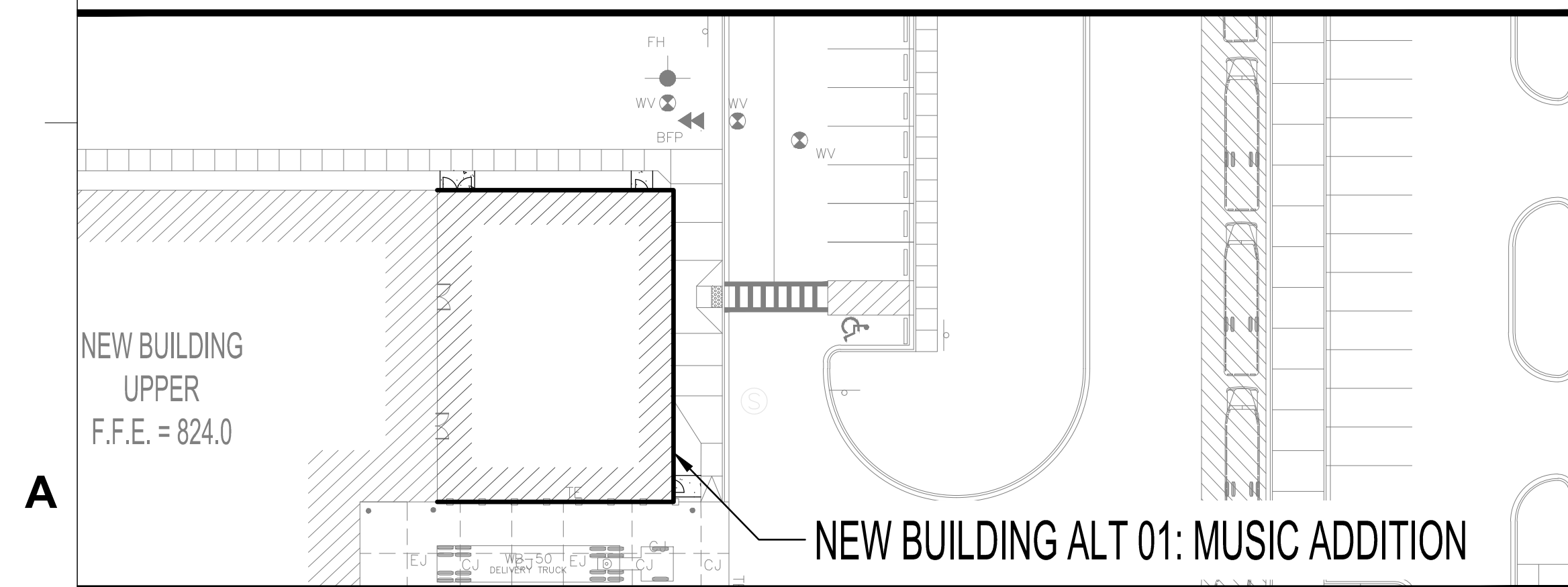
AREA 4



AREA 5



AREA 6



AREA 3

**SITE NOTES:**

1. SEE SHEET C001 FOR CIVIL NOTES AND ABBREVIATIONS.

**CIVIL LEGEND - SITE**

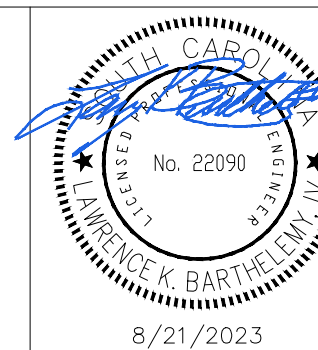
- STANDARD DUTY ASPHALT PAVEMENT - INSTALL IAW DETAIL -/C62\_-
- HEAVY DUTY ASPHALT PAVEMENT - INSTALL IAW DETAIL -/C62\_-
- CONCRETE SIDEWALK - INSTALL IAW DETAIL -/C62\_-
- ACCESSIBLE PARKING SPACE AND AISLE - INSTALL IAW DETAIL -/C62\_-
- CROSSWALK (THERMOPLASTIC) - INSTALL IAW DETAIL -/C621\_-
- 24" STOP BAR (THERMOPLASTIC) - INSTALL IAW DETAIL -/C62\_-
- INTERIOR TRAFFIC ARROW - INSTALL IAW DETAIL -/C62\_-
- SINGLE GATE - INSTALL IAW LANDSCAPE PLANS.
- DOUBLE GATE - INSTALL IAW LANDSCAPE PLANS.
- HIGHWAY/DRIVEWAY TRAFFIC ARROW (THERMOPLASTIC) - INSTALL IAW DETAIL -/C62\_-
- NEW TRAFFIC SIGN - INSTALL PER PLAN AND IAW DETAILS -/C62\_-
- PARKING SPACES - STRIPE WITH 4" SINGLE WHITE SOLID LINE
- CHAIN LINK FENCE - INSTALL IAW LANDSCAPE PLANS.
- PROPERTY LINE
- LIMITS OF CONSTRUCTION/LIMITS OF DISTURBANCE

**CRAIG GAULDEN DAVIS**

Architecture  
Planning  
Interiors  
2002 Clipper Park Rd Suite 201  
Baltimore, MD 21211  
Phone 410.237.7115

COPYRIGHT © 2021 CRAIG GAULDEN & DAVIS, INC. ALL RIGHTS RESERVED

THIS COPYRIGHTED DOCUMENT AND ALL INFORMATION CONTAINED HEREIN IS AN INSTRUMENT OF SERVICE AND SHALL NOT BE REPRODUCED, ALTERED, OR REUSED IN PART OR IN WHOLE WITHOUT PRIOR WRITTEN PERMISSION FROM THE ARCHITECT. THIS DRAWING IS THE EXCLUSIVE PROPERTY OF THE ARCHITECT AND MUST BE RETURNED UPON REQUEST.



CONSULTANT  
**ADC**  
ENGINEERING  
CHARLESTON\COLUMBIA\GREENVILLE  
25 WOODS LAKE ROAD,  
SUITE 210  
GREEVILLE, SC 29607  
ph: 864-751-9121  
WWW.ADCENGINEERING.COM

**GREENVILLE COUNTY SCHOOLS**

**FOUNTAIN INN HIGH SCHOOL ADDITION**

600 QUILLEN AVENUE  
FOUNTAIN INN, SC

DATE	MARK	DESCRIPTION

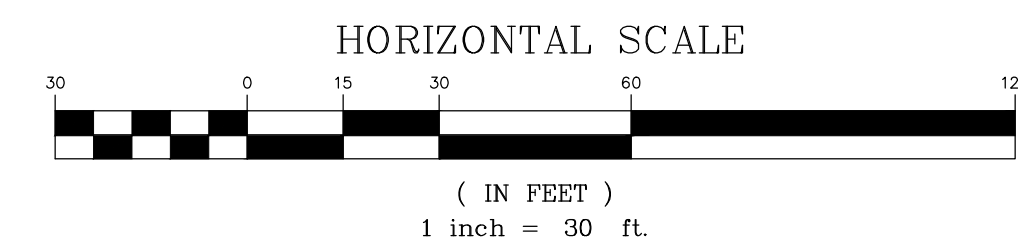


ISSUE:	SCHEMATIC DESIGN
DATE:	08/21/2023
PROJECT NO:	23121
DRAWN BY:	LKB
CHECKED BY:	LKB

**SITE PLAN BLOW UPS**

**C202**

TBM#	NORTHING	EASTING	ELEVATION	DESCRIPTION
TBM 1	1046817.9822	1639438.4806	825.98'	IPF 3/4" CT
TBM 2	1047484.3800	1641413.7100	785.11'	USGS MONUMENT DESIGNATION CROSS



1

2

3

4

5