

GREENVILLE COUNTY SCHOOLS HILLCREST MIDDLE SCHOOL EXISTING FIRE PROTECTION SFRM ENHANCEMENT

510 GARRISON ROAD | SIMPSONVILLE, SOUTH CAROLINA 29681

GENERAL: G-001 COVER SHEET
ARCHITECTURAL: A-101 ENLARGED FIREPROOFING PLAN

C1 DRAWING INDEX

OWNER'S REPRESENTATIVE:
JAIME BENTON
GREENVILLE COUNTY SCHOOLS

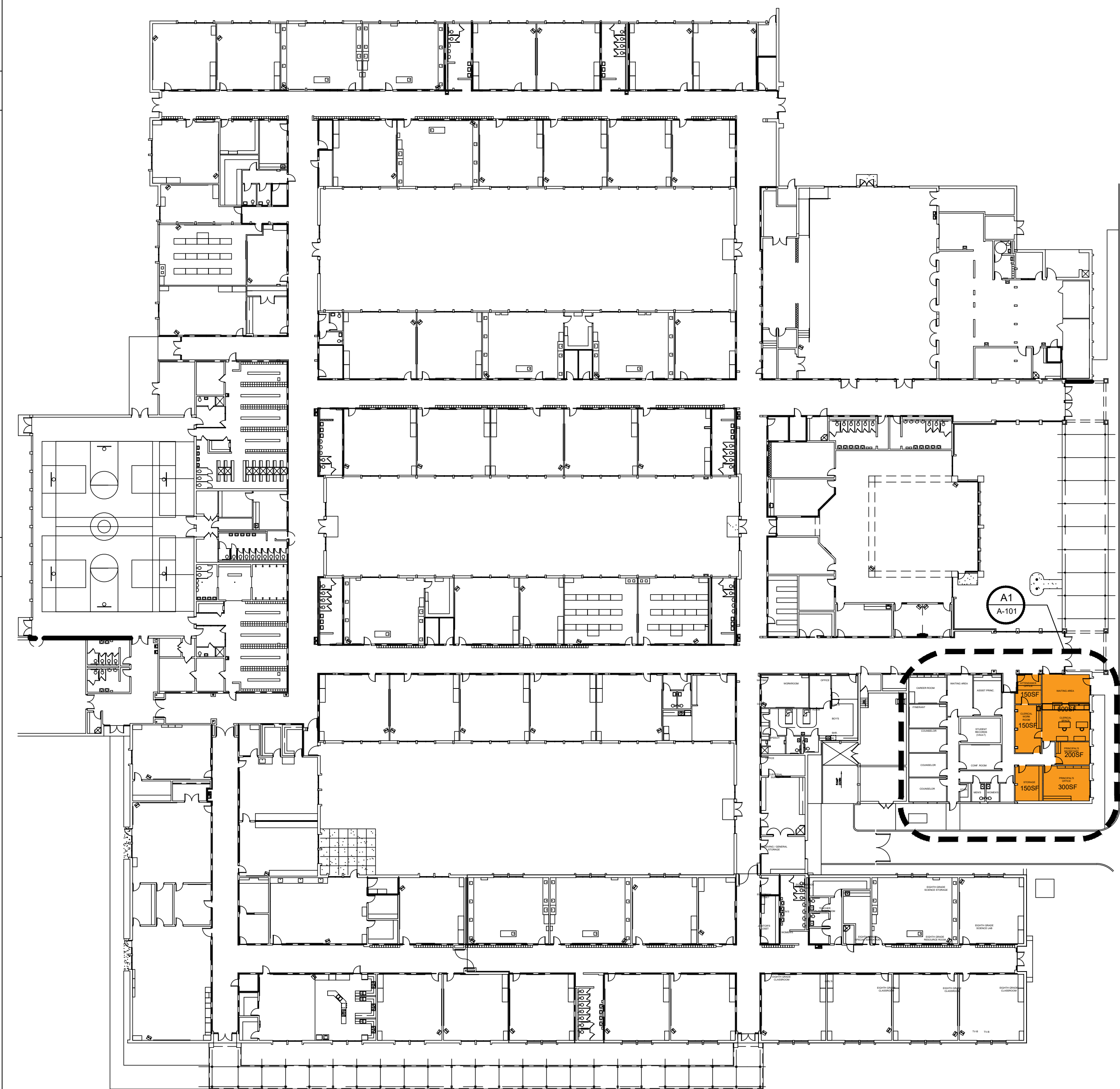
ARCHITECT:
CHARLES SLATE, AIA
ARD, WOOD, HOLCOMBE & SLATE ARCHITECTS
620 N. MAIN STREET, SUITE 104
GREENVILLE, SOUTH CAROLINA 29601
864.414.2147

SPECIAL INSPECTIONS
DENEEN HANKINS
HI SERVICES
864.735.2888

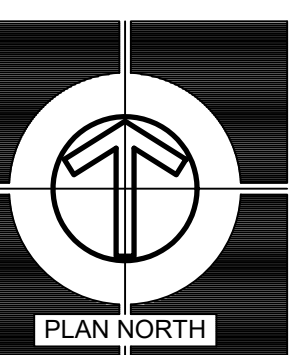
B1 CONTACT INFORMATION

REFER TO MAULDIN HS EXISTING FIRE PROTECTION SFRM ENHANCEMENT SHEET G-001 THRU G-004 FOR MANUFACTURE INFORMATION, PROJECT INFORMATION, AND UL DESIGN DATE INFORMATION.

A1 PROJECT NOTES



A2 OVERALL FLOOR PLAN - AREA OF PROJECT



REVISIONS

DATE	MARK	DESCRIPTION
05-04-2021	0	ISSUED FOR OSF REVIEW & PERMISSION TO BID

MEMBERS: AMERICAN INSTITUTE OF ARCHITECTS
NCARB CERTIFICATES: 46297, 27553, 44627 & 44714
ARD, WOOD, HOLCOMBE & SLATE, INC.
ARCHITECTS AND PLANNERS
411 RIVER STREET | SUITE A
GREENVILLE, SOUTH CAROLINA
PHONE: 864/242-5450 FAX: 864/233-5091
WWW.AWHSARCHITECTS.COM

COVER SHEET

HILLCREST
MIDDLE SCHOOL

SIMPSONVILLE, SOUTH CAROLINA



05-04-2021
DRAWN ASC
JOB 0713-020
DATE 04 MAY 2021

G-001

DRAWING NUMBER

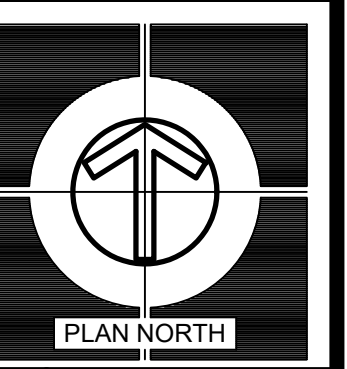




LEGEND



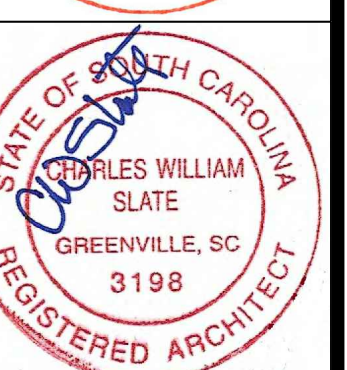
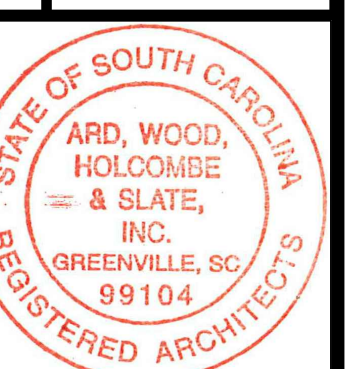
FIRE PROOFING MISSING - SEE QUANTITY



REVISIONS	
DATE	DESCRIPTION
05.04.2021	ISSUED FOR OSF REVIEW & PERMISSION TO BID

MEMBERS: AMERICAN INSTITUTE OF ARCHITECTS
 NCARB CERTIFICATES: #2287, 2293, #4627 & #4714
ARD, WOOD, HOLCOMBE & SLATE, INC.
ARCHITECTS AND PLANNERS
 411 RIVER STREET, SUITE A
 GREENVILLE, SOUTH CAROLINA
 PHONE: 864/242-5450 FAX: 864/233-5971
 WWW.AWHSARCHITECTS.COM

ENLARGED FIREPROOFING PLAN
HILLCREST MIDDLE SCHOOL
 SIMPSONVILLE, SOUTH CAROLINA



DRAWN	ASC
JOB	0713 - 020
DATE	04 MAY 2021

A-101
 DRAWING NUMBER



© COPYRIGHT 2021 ARD, WOOD, HOLCOMBE & SLATE INCORPORATED ARCHITECTS AND PLANNERS. THIS DRAWING IS AN INSTRUMENT OF SERVICE AND REMAINS THE PROPERTY OF ARD, WOOD, HOLCOMBE & SLATE, INC. ARCHITECTS AND PLANNERS. IT MAY NOT BE REPRODUCED IN ANY MANNER WITHOUT WRITTEN PERMISSION.