

Woodmont High School 2011 Annual Report to the Public

**WOODMONT HIGH SCHOOL
2831 WEST GEORGIA ROAD
PIEDMONT, SOUTH CAROLINA 29673**



Woodmont High School releases state and federal accountability reports to the public. This report serves to help inform the public of the school's progress over time.

COMMUNICATION EFFORTS

- Weekly Messenger calls made to parents.
- Announcements read to students and e-mailed to parents/guardians each day upon request.
- Woodmont Web Page available through <http://ed.sc.gov>
- Quarterly PTSA meetings and Open House events.
- Parent-Teacher conferences scheduled by guidance at request of parents or teachers.
- Progress Reports and Report Cards distributed to students every four and a half weeks.
- Marquee Announcements



- Band Booster Club
- Athletic Booster Club
- School Improvement Council
- PTSA

Inside this issue:

HSAP Exit Exam Scores	2
HSAP ELA Scores	2
HSAP Math Scores	2
End of Course Test Scores	3
Outstanding Features	3
HSAP Longitudinal Scores	4
Graduation Rate	4

Special points of interest:

- Brand new thirty-five million dollar facility accommodating 1,600 students.
- Partnership with Michelin Americas Research and Development Corporation.
- Advisor-advisee program: Teachers mentor groups of students and hold annual parent conferences to cover student progress and scheduling concerns.

2010-2011 HIGHLIGHTS

Michelin Exit Exam Tutoring
Academic Incentives
Apex Credit Recovery
Freshmen Academy
Twilight School

SAT Preparation Class
IB Authorized
Weekly Messenger Calls
EOC After School Tutoring
JAG Program with Career Specialist

***Woodmont's mission is to empower students to become
lifelong learners and productive citizens.***

HSAP EXIT EXAM SCORES FIRST ATTEMPT—SECOND YEAR STUDENTS

What is the HSAP Exit Exam?

The South Carolina High School Assessment Program (HSAP) consists of two tests—one in English-language arts and one in mathematics—that are administered for the first time to second year high school students. First attempt passage rates make up 20% of the school report card. Starting in 2004, HSAP took the place of the older BSAP assessment. HSAP requirements are much more stringent and measure standards met up to the 10th grade year, while the older BSAP test was based on 8th grade requirements. Students must pass both parts of the HSAP exam and meet the diploma requirements to earn a high school diploma. Those students not passing on the first attempt are given at minimum four more opportunities while in high school.

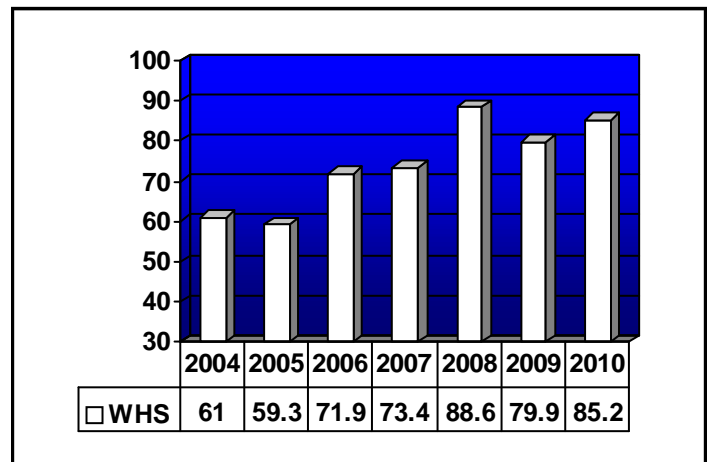
HSAP Exit Exam Performance Goal:

The percentage of second year students in the current school year who meet the standards on both HSAP Exit Exam subtests (English language Arts and Mathematics) will increase to 88%. The percentage for the 2009-2010 school year was 85.2%.

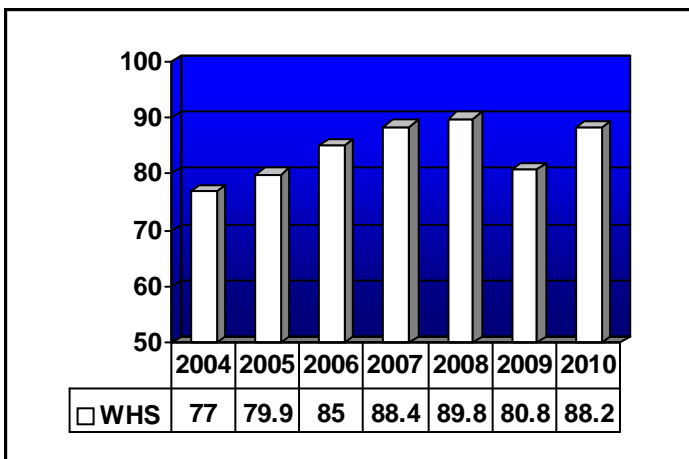
Improvement Strategies to meet the Performance Goal:

- Freshman Academy
- Continue Standards Based Instruction
- HSAP Exit Exam Tutorial Program
- HSAP math software program
- HSAP math problem of the day
- Measures of Academic Progress Testing (MAP)
- Math TV

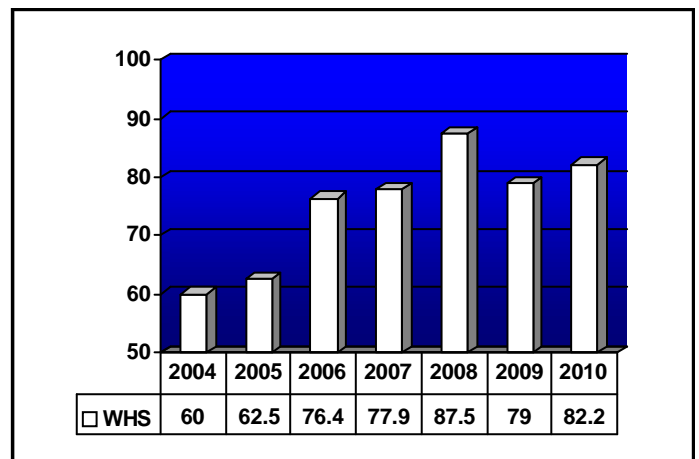
**First Attempt
Exit Exam Scores Over Time
(percent meeting standard)**



**First Attempt ELA Exit Exam
Scores Over Time**



**First Attempt Math Exit Exam
Scores Over Time**



END OF COURSE TEST SCORES

How do State required End of Course Tests influence the Report Card?

State required end of course test scores carry significant weight when assessing high schools. Twenty percent of the School Report Card was measured using the percentage of students passing state mandated end of course exams in English I, Algebra I, and Physical Science (US History was added to this list beginning in 2008-2009). This category replaced the measuring the number of LIFE scholarships awarded to seniors and was the first year that end of course test results impacted the report card.

End of Course Performance Goal:

The percentage of students passing end of course tests will improve from 61.6% to 65%.

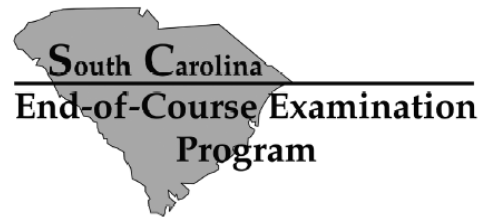
Improvement Strategies to meet the Performance Goal:

- Standards driven curriculum
- MAP testing for 9th graders– diagnosis of instructional needs
- American Book Company's End of Course Workbooks
- Double blocking freshmen that are below basic in Math and/or English

End of Course Test Passage Percentages 2009-2010

Percent scoring 70 or above on:	Our School	High Schools with Students Like Ours
Algebra I / Algebra I Part B	76.4	83.9
English I	69.7	54.5
Physical Science*	58.5	60.7
All tests	61.6	64

High Schools with Students like Ours are high schools with Poverty Indices of no more than 5% above or below the index for this high school.



"Excellence is an art won by training and habituation. We do not act rightly because we have virtue or excellence, but we rather have those because we have acted rightly. We are what we repeatedly do. Excellence, then, is not an act but a habit."
Aristotle



Outstanding Features/Programs

- ⇒ International Baccalaureate Diploma Program
- ⇒ Advanced Placement Program
- ⇒ Freshman Academy
- ⇒ Outstanding Drama Productions
- ⇒ Award Winning Fine Arts Department
- ⇒ Five National Board Certified Teachers
- ⇒ Top Ten District Teacher of the Year
- ⇒ Business Partnership with Michelin North America
- ⇒ SC Jobs for Graduates
- ⇒ Agricultural Program including Future Farmers of America
- ⇒ Served by Urban League Counselor
- ⇒ Media Production lab
- ⇒ State-of-the-art science laboratories



LONGITUDINAL HSAP SCORES

How are first attempt and longitudinal HSAP scores different?

The major difference in the two different calculations is that first attempt measures the percentage of students in their second year of high school while longitudinal results measure the percentage of a group of students passing the HSAP from their first attempt to their senior year.

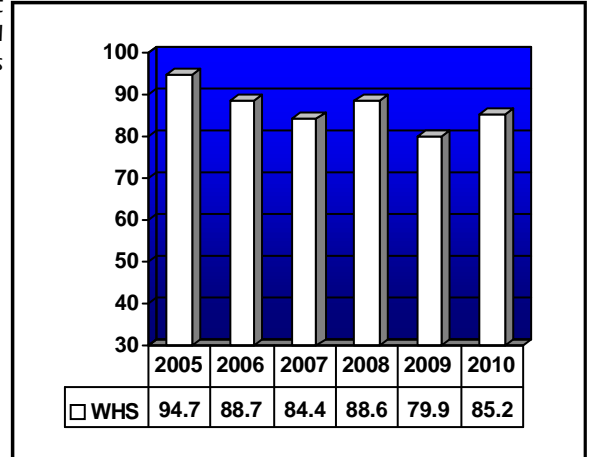
Longitudinal HSAP Exit Exam Performance Goal:

The percentage of second year high school students who pass the HSAP Exit Exam by the spring graduation two years later will increase from 85.2% to 88%.

Improvement Strategies to meet the Performance Goal:

- Standards based instruction
- HSAP Exit Exam Remediation Classes
- Michelin Tutors
- HSAP Cram Session Workshops
- HSAP Practice Test

HSAP Longitudinal Scores Overtime



2010 Report Card Results

Absolute rating:

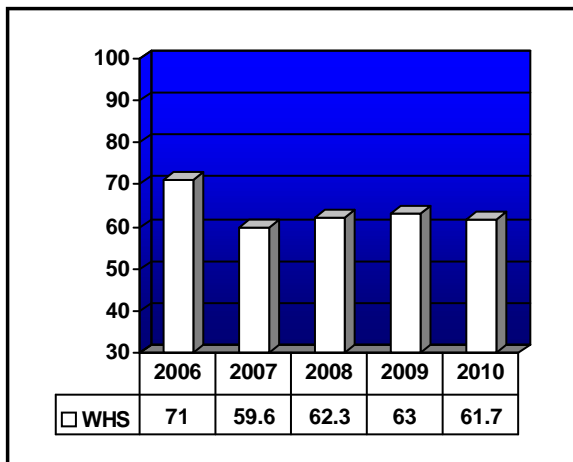
Average

Improvement Rating:

Below Average

GRADUATION RATE

Graduation Rate Overtime



How is graduation rate calculated?

Graduation rate is the percentage of all (including students with disabilities) ninth-grade students prior to the year of the report card who earn a standard high school diploma.

Graduation Rate Performance Goal:

The number of students graduating in four years will increase from 59.6% to 65%.

Improvement Strategies to meet the Performance Goal:

- Freshman Academy
- Career Specialist
- EOC After School Tutoring
- 4 x 4 Block Scheduling
- Apex Credit Recovery Program
- Twilight School
- Seat Time Recovery
- Michelin Tutors
- HSAP Cram Sessions
- Saturday School