

Greenville High School Improvement Council (SIC)

Annual Report to the Community 2011

JF Lucas Principal
Pam Evans SIC Chair

Community:

Craig Stine
Rev. Sam McPhereson

Students:

Sydney Berry
Jack Evans
Dontavius Reeves
Moriah Wicker

Parent/School Organizations:

Derrick Brown
Suanne Hall
Walt Tollison
Jennifer Yarborough

Faculty:

Jennifer Binder
Christine Burras
Vicki Clement
Michael Hoffman
Dom LaColla
Aaron Merritt
Matt Phillips
Pam Player

Annual Report to the Community

Each SIC is required to write and distribute the annual "Report to the Community" by April 30th of each school year. This report provides us with an excellent opportunity to share Greenville High's successes with the community as we report on the progress made with the school improvement plan.

Throughout the past four years, our school has made continuing progress in the four key areas assessed on the Annual SC School Report Card. These areas include:

- ❑ First-time pass rate on the High School Exit Exam, HSAP, or the number of 10th graders who pass all parts of the exam on the first attempt;
 - ❑ Longitudinal pass rate on HSAP, or the number of students who successfully pass all parts of the exam by 12th grade;
 - ❑ Pass rate on all End-of-Course Tests, including Algebra 1, Biology 1, English 1, Physical Science, and US History;
 - ❑ On-time Graduation rate, or the number of students who graduate four years after entering high school.
-

Accomplishments

- ❑ Implementation of new magnet courses—Law, Finance, and Business;
 - ❑ Continuation of extended day program for at-risk students;
 - ❑ Benchmark testing provides data for instructional decision-making in 9th and 10th grade core courses and all EOC classes;
 - ❑ On-going Individual Graduation Plan (IGPs) sessions with 9th, 10th, and 11th grade students;
 - ❑ Freshman Academy common planning provides teachers opportunities for continued collaboration, resulting in the continued decrease of 9th grade failures;
 - ❑ Graduate Greenville provides a Graduation Coach for struggling 9th grade students;
 - ❑ GHS English teacher named as District Top Ten Teacher for 2010-2011;
 - ❑ Greenville High named as Top 1500 School by *Newsweek* Challenge;
 - ❑ Second-tier course, Digital Electronics, offered as part of Project Lead the Way;
 - ❑ *Challenge Days* held March 2011 for over 450 students and 50 adult facilitators;
 - ❑ 18 students named as Palmetto Fellow Scholarship recipients for 2010-2011;
 - ❑ One student named National Merit Scholarship Program Finalist for 2011;
 - ❑ Over 1000 Renaissance cards distributed to students for academic achievement and GPA improvement;
 - ❑ 23 Varsity sports teams competing in 15 sports in South Carolina AAA.
-

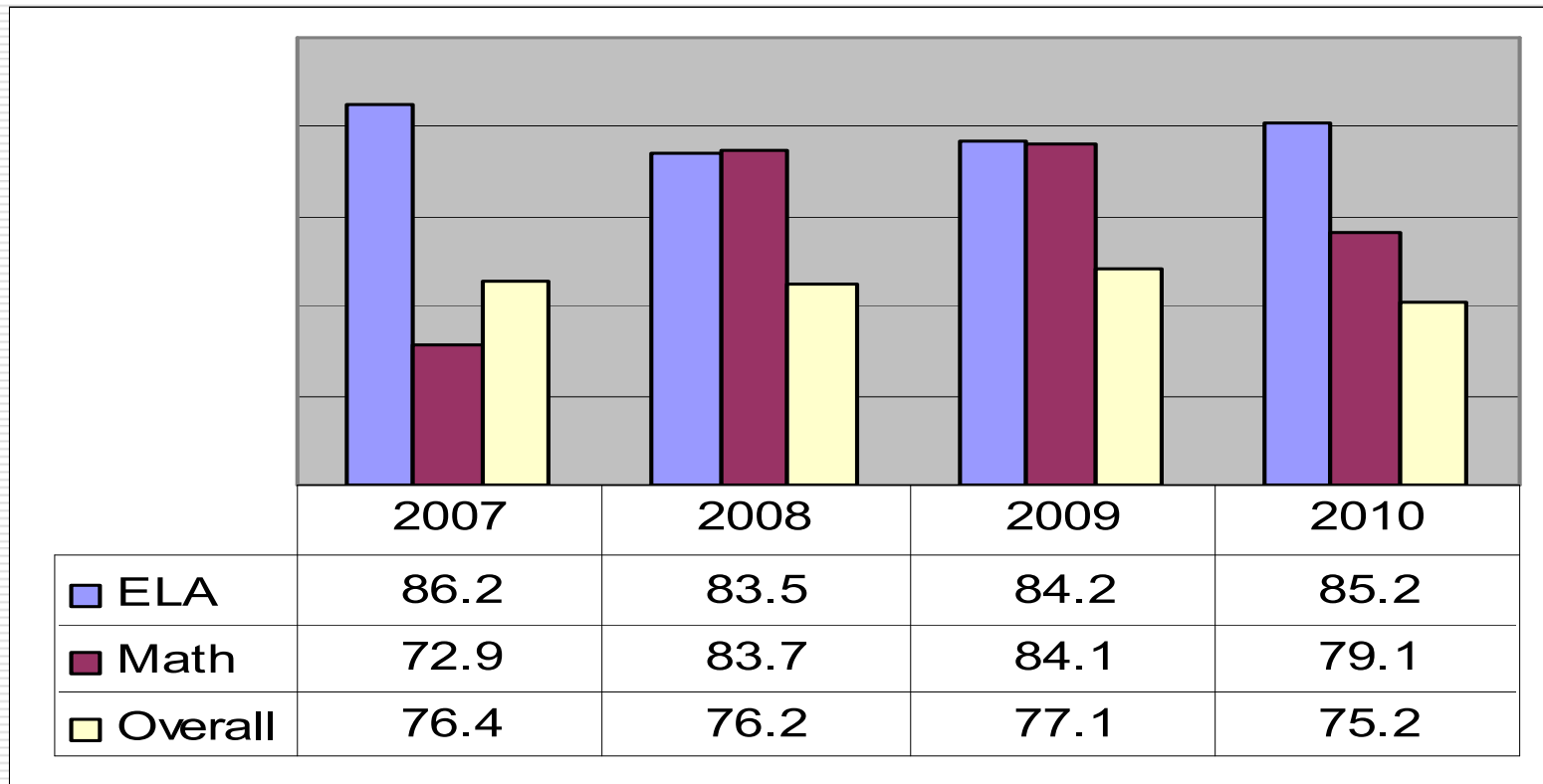
Enrollment Trends:

School Year	2008-09	2009-10	2010-11
Student Enrollment	1306	1439	1436
Number Eligible for Free and Reduced Lunch	543 free 74 reduced	707 free 49 reduced	710 free 72 reduced
% Free and Reduced Lunch	47%	53%	54.5%

Freshman Academy Pass Rate

School Year	Freshman Pass Rate
2004-2005 (Academy implemented)	83.9%
2005-2006	84.4%
2006-2007	87.2%
2007-2008	88.6%
2008-2009	86.1%
2009-2010	85.4%

High School Assessment Program (HSAP) First-time Pass Rate



The high school Exit Exam, HSAP, is taken in the Spring of 10th grade. It consists of three parts: a reading and writing component (ELA) and a math component. The first-time pass rate is the number of students who pass (score of 2 or higher) on the first attempt.

High School Assessment Program (HSAP) Longitudinal Pass Rate

2006-07	86.6%
2007-08	86.6%
2008-09	92.1%
2009-2010	92.6%

Longitudinal pass rate reflects the number of students who pass both parts of HSAP by their senior year (after multiple attempts).

End of Course Exam Pass Rate

EOC	2007	2008	2009	2010
Algebra 1	63.4%	66.7%	60.5%	68.7%
English 1	54.3%	60.6%	67.2%	72.0%
Physical Science	49.5%	60.8%	69.0%	69.0%
US History	NA	NA	51.0%	57.2%
All Tests	65.8%	62.5%	61.9%**	67.5%***

**Overall pass rate without US History for 2008-09 is 65.6%

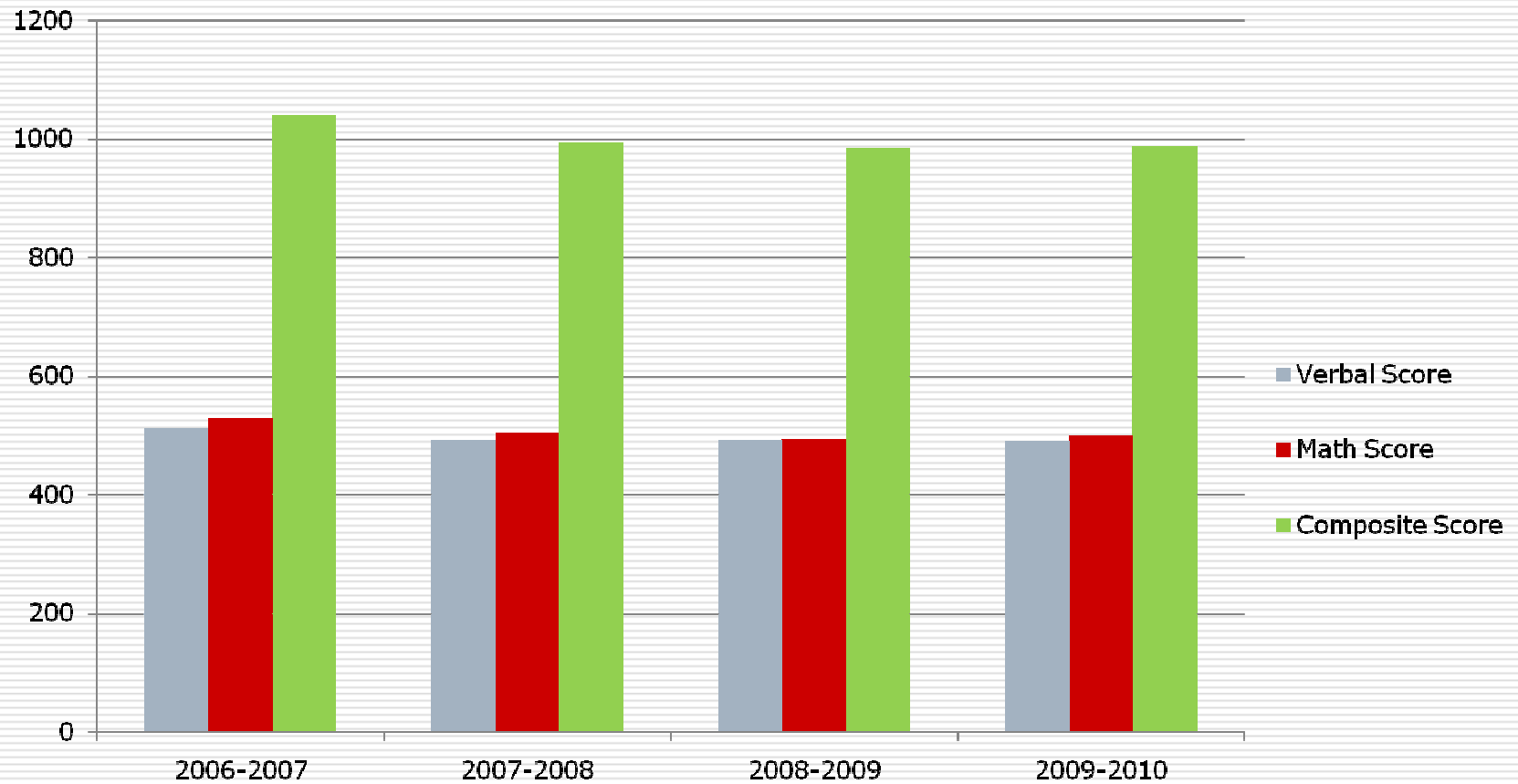
***Overall pass rate for 2009-2010 includes US History results.

On-Time Graduation Rate*

2006- 2007	2007- 2008	2008- 2009	2009- 2010
69.4	71.8	72.0	70.8%

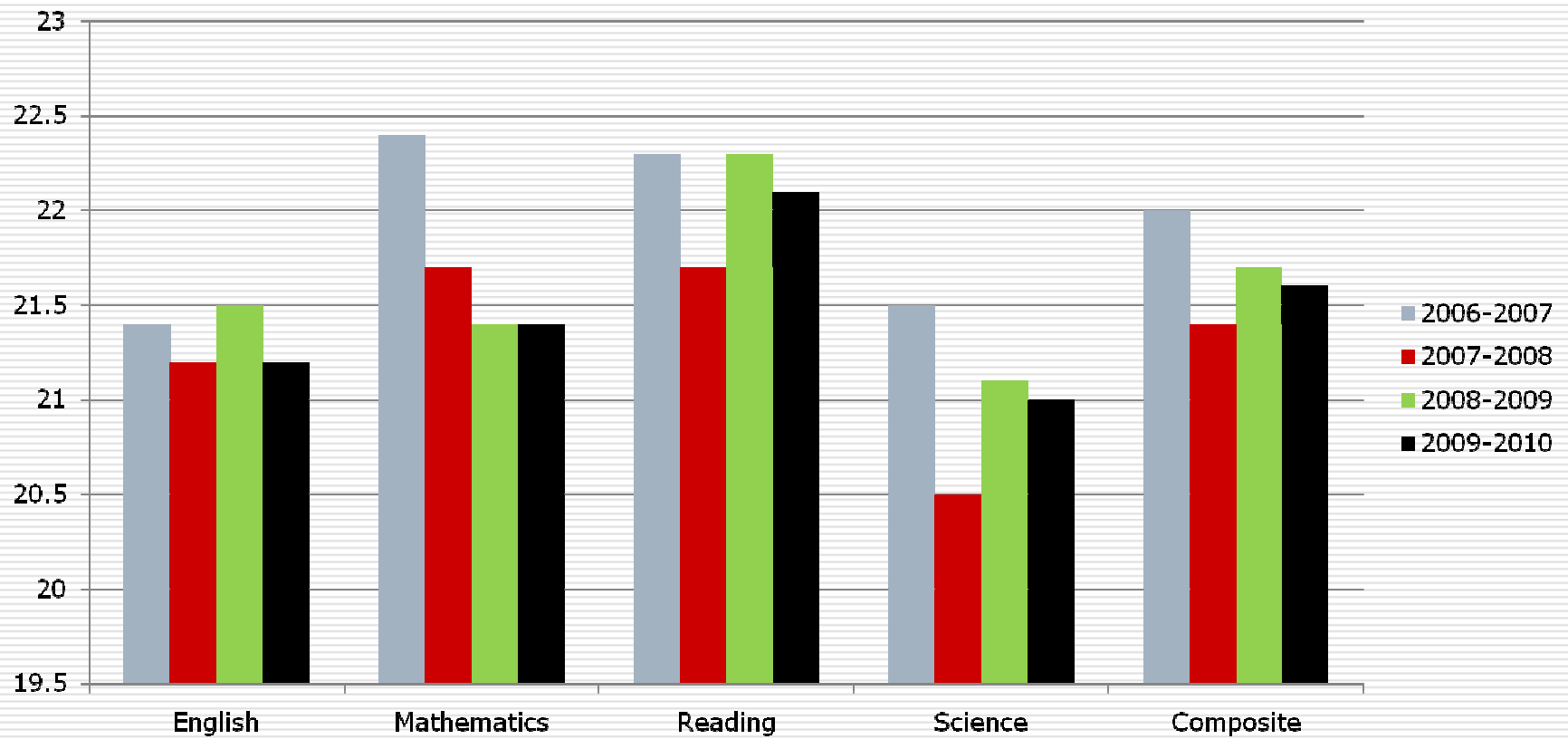
*On-Time graduation means a student graduates within four years of entering high school.

SAT Trends



Maximum composite score is 1600 without writing component.

ACT Trends



Maximum score is 36.0.

AP Data Summary

	2006- 2007	2007- 2008	2008- 2009	2009- 2010
Number AP Courses Taken	14	14	15	12
Number AP Exams Taken	383	293	320	405
Number Exams with Score of 3 or Higher	218	155	187	243
Percent Exams with Score of 3 or Higher	57%	53%	58%	60%