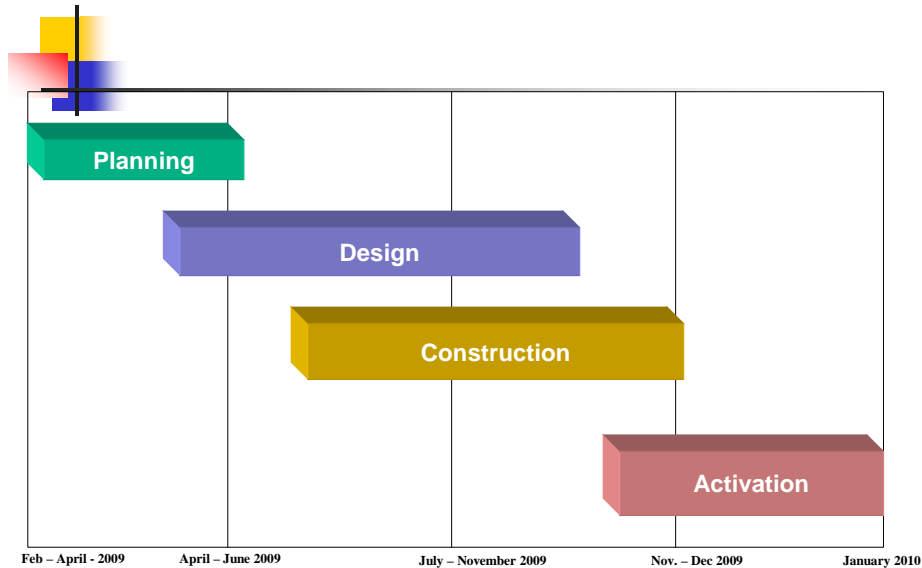


57



58

■ Design Phase:

- Interface and customization inventory
- Business Requirements and Current State Analysis Documents
- Fit-Gap Analysis (what do we do outside of JDE)
- Design Documents (design how the new system will work)
- Technology Planning Document
- Application Exploration Checklist and Summarized Results
- Conference Room Pilot (CRP) Plan and Summarized Results
- Client Specific Procedure Manuals

■ Construction Phase:

- System Test Plan
- System Test Execution Results Document
- System Performance Testing Results
- End User Training Plan
- Readiness Assessment Document
- Cut-Over Plan Complete

■ Activation:

- End User Training Assessments & Evaluations
- Execute Cut-Over Plan
- Final Go-Live Sign-off
- Data Conversions Validation Sign-off
- Project Sign-Off