



2010-2011

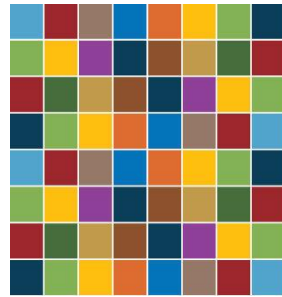


Greenbrier Elementary
The School of Kindness!



Greenbrier Mission Statement:

The mission of Greenbrier Elementary School is to become seekers of learning, models of excellence, and builders of character.



THE WHOLE CHILD

HEALTHY

Nutritious Meals/Snacks
PE Classes
Health Lessons/CATCH
Recess
Gazelles Running Club
CAN Club
Garden Club

SAFE

School-wide Expectations (SOAR Pledge)
Clean Building/Grounds
Playground Safety/Safety Backpacks
First Responders Response Team
Internet Safety
Safety Patrols
Fuss Busters
Kindness Patrols

ENGAGED

Learning Focused Strategies
Questioning Strategies
Compass Odyssey
Culminating Activities
Field Trips
Guest Speakers/Career Day

SUPPORTED

Guidance Lessons/Small Groups
ESOL
Challenge
Resource
Student Conferencing
Community Partnerships (Safe Families)
Mentors
PTA/SIC

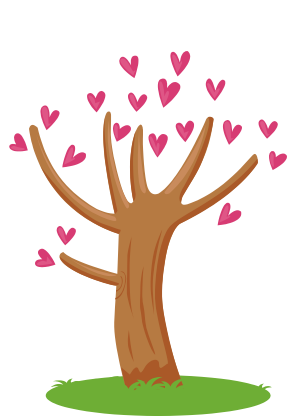
CHALLENGED

Common Assessments
Best Practices
Vocabulary Strategies
Science Lab
Rubrics
Integration
Writing Focus
Technology Resources
Business Partnerships (BOSCH)

The School of Kindness



Honesty



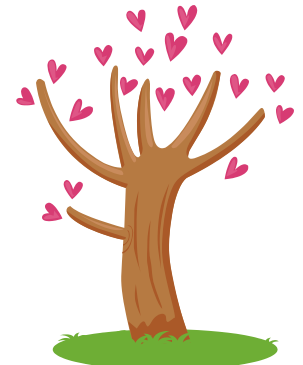
Respect



Courtesy



Responsibility



Integrity

Like a tree, our character continues to grow...
and like an eagle, we soar into the sky of kindness.

Take Time To Be Kind

T.T.T.B.K

Additional Ways to measure Kindness

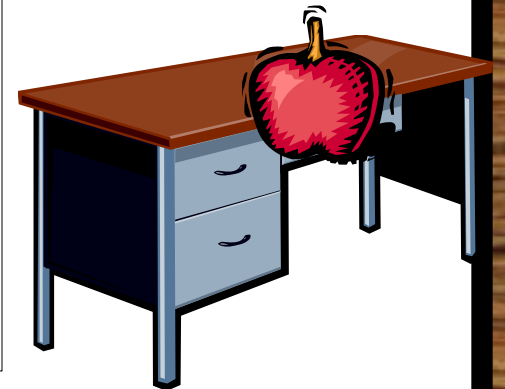
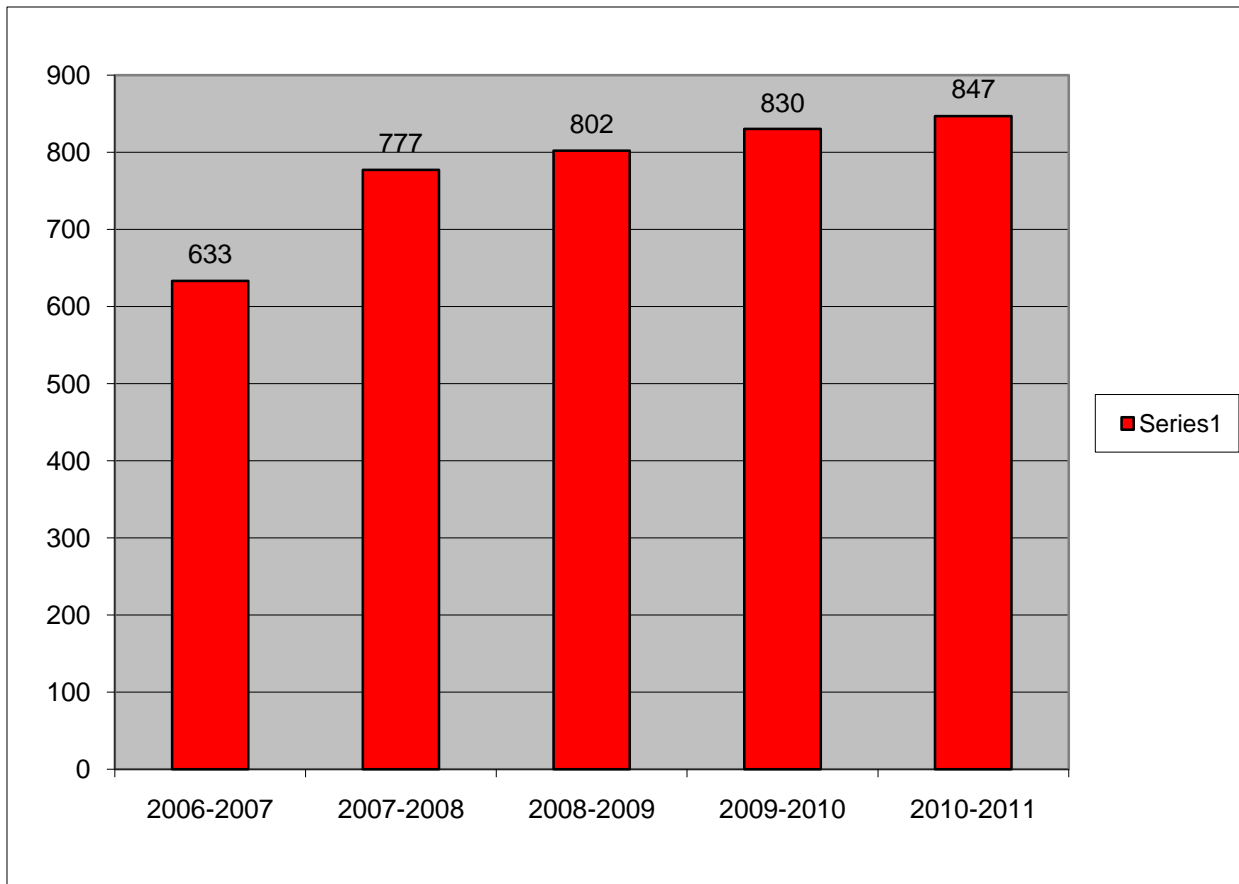
Goals

Increase the prevalence of kindness by 5%; where students expect kind behavior from each other, and want to come to school for the 2010-2011 school year.

Decrease the incidence of bullying reported and the concern about bullying by 5% for the 2010-2011 school year.

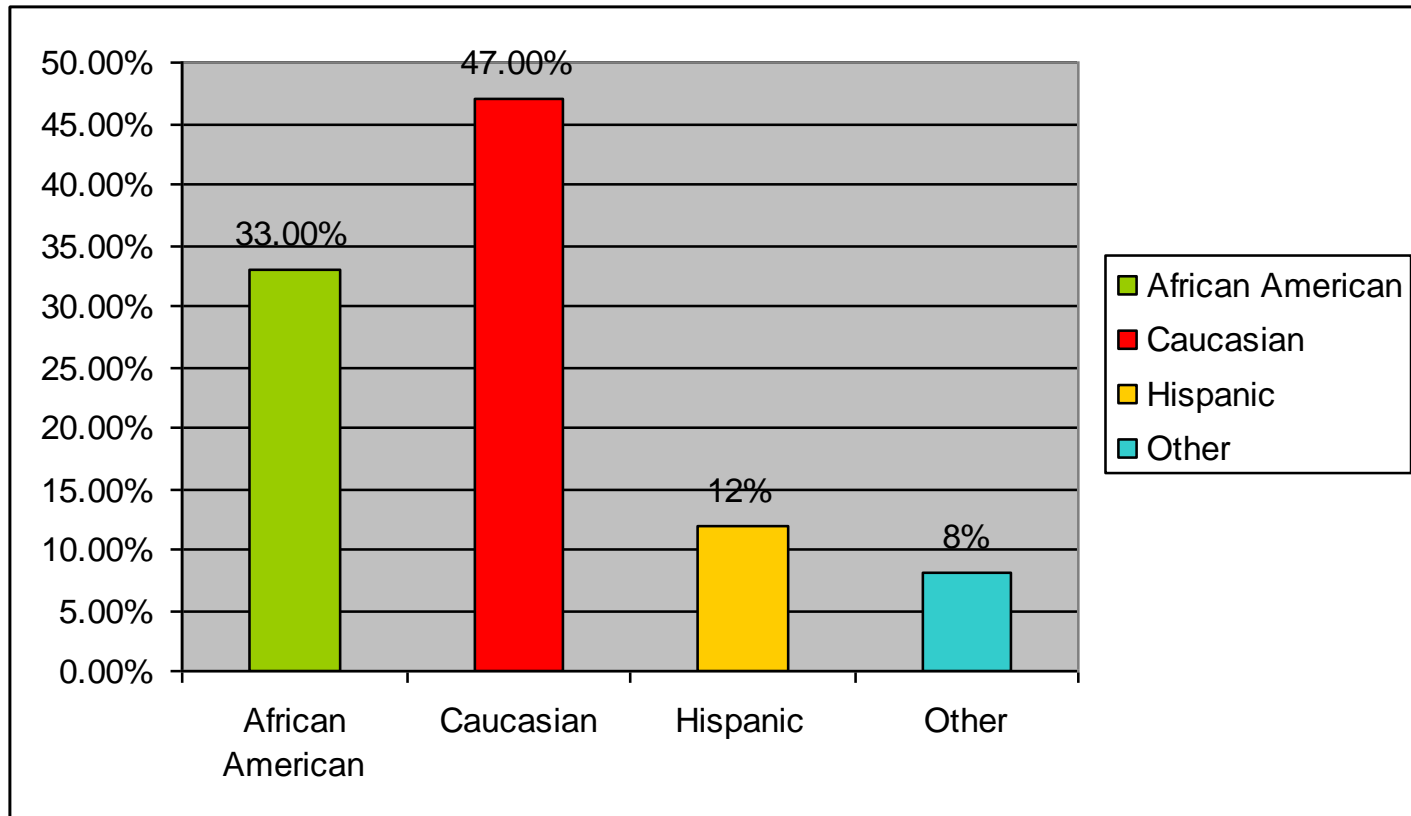


Enrollment





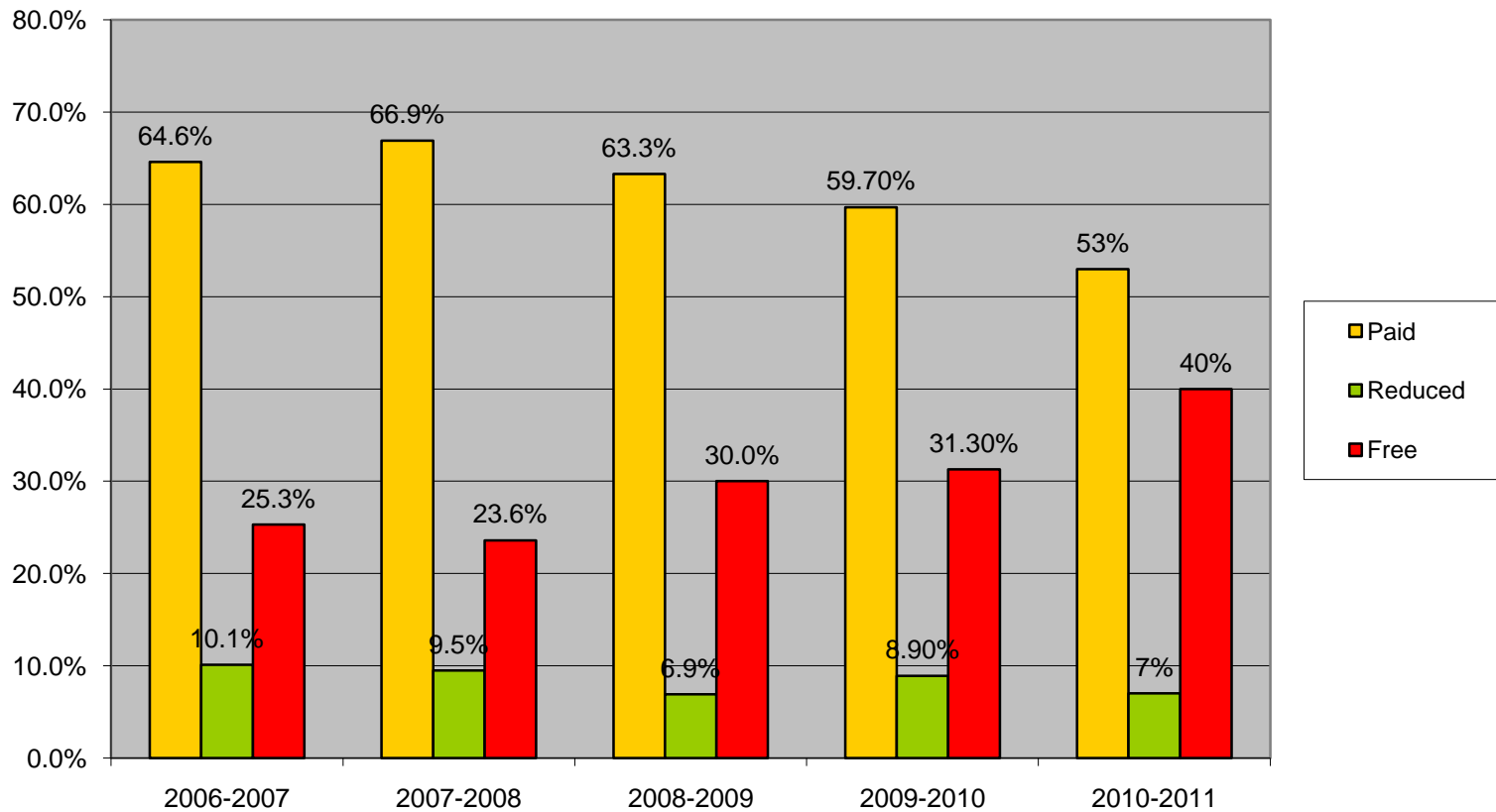
Ethnicity



Classroom Distribution

Class Type	# of Teachers	Teacher to Student Ratio
4K	1	1:20
5K	5	1:25
First Grade	6	1:20
Second Grade	6	1:23
Third Grade	6	1:22
Fourth Grade	5	1:27
Fifth Grade	5	1:27

Lunch Status



Special Education

	2006-2007	2007-2008	2008-2009	2009-2010	2010-2011
PSSC	0	7	18	8	11
TMD	11	7	7	9	10
EMD	-	-	-	-	4
K5 Behavior	-	-	-	4	6
ED	1	2	-	-	-
LD	47	46	42	48	31
OHI	-	-	5	3	1
Autism	7	5	7	5	9
Speech	65	56	57	47	76

ESOL

2006-2007	2007-2008	2008-2009	2009-2010	2010-2011
63	63	96	96	100

Challenge

2006-2007	2007-2008	2008-2009	2009-2010	2010-2011
45	46	41	35	38

Special Permission

2006-2007	2007-2008	2008-2009	2009-2010	2010-2011
50	58	88	98	102



PASS Data

ENGLISH/LANGUAGE ARTS	Grade 3		Grade 4		Grade 5	
	2009	2010	2009	2010	2009	2010
Performance Level	2009	2010	2009	2010	2009	2010
Not Met	23.70%	20.00%	25.80%	25.80%	22.00%	16.80%
Met	36.00%	34.60%	45.50%	45.30%	42.30%	50.40%
Exemplary	40.40%	45.40%	28.80%	28.90%	35.80%	32.80%
Met/Exemplary	76.40%	80.00%	74.60%	74.20%	78.10%	83.20%
Percent Scoring Met/Exemplary						
2010	79.13%					
2009	76.36%					

ELA

PASS Data

WRITING	Grade 3		Grade 4		Grade 5	
	2009	2010	2009	2010	2009	2010
Performance Level	2009	2010	2009	2010	2009	2010
Not Met	27.90%	30.50%	32.60%	26.90%	21.50%	19.80%
Met	44.10%	43.00%	44.70%	39.20%	42.10%	48.90%
Exemplary	29.90%	26.60%	22.70%	33.80%	36.40%	31.30%
Met/Exemplary	72.00%	69.60%	67.40%	73.00%	78.50%	80.20%
Percent Scoring Met/Exemplary						
2010		74.26%				
2009		72.63%				

Writing

PASS Data

MATHEMATICS	Grade 3		Grade 4		Grade 5	
	2009	2010	2009	2010	2009	2010
Performance Level	2009	2010	2009	2010	2009	2010
Not Met	41.20%	39.20%	20.50%	28.10%	38.20%	32.10%
Met	41.20%	39.20%	57.60%	53.90%	52.80%	45.80%
Exemplary	17.50%	21.50%	22.00%	18.00%	8.90%	22.10%
Met/Exemplary	58.70%	60.70%	79.60%	71.90%	61.70%	67.90%
Percent Scoring Met/Exemplary						
2010		66.83%				
2009		66.66%				

Math

Reading Goal

Type of Goal: SCHOOL IMPROVEMENT GOAL

Performance Standard: STUDENT ACHIEVEMENT IN READING

Goal Statement: Increase the percentage of all students (grades 3-5) scoring Met/Exemplary on PASS English/Language Arts by decreasing the number of students scoring Not Met by 5 students.

Baseline Data (*include the source and year of the data*):

Percentage of Students Scoring Met/Exemplary on PASS ELA:

Spring 2010 – 78.5%

Spring 2009 – 76.3%

Reading Goal

Strategy	Measurable By	Target Date
Utilize Common Assessments.	Students will achieve at least 80% accuracy on common grade level theme/unit tests.	April 2011
Utilize Essential Skills to identify essential learning concepts.	Teachers will reflect the use of Learning Focused Strategies in Lesson Plans. Principals will utilize Teacher Observations to record components of Learning Focused in classroom lessons.	May 2011
Provide differentiated practice to support vocabulary and comprehension strategies.	Students will met their target RIT growth goal on the MAP Reading test.	March 2011
Implement the use of Compass Learning Odyssey.	Students will achieve at least 80% accuracy on student reports.	January 2011 May 2011
Utilize STAR Reading.	At least 75% of students in classrooms will perform at or above grade level.	Sept/Dec 2010 Feb/April 2011

Math Goal

Type of Goal: SCHOOL IMPROVEMENT GOAL

Performance Standard: STUDENT ACHIEVEMENT IN MATHEMATICS

Goal Statement: Increase the percentage of all students (grades 3-5) scoring Met/Exemplary on PASS Mathematics by decreasing the number of students scoring Not Met by 7 students.

Baseline Data (*include the source and year of the data*):

Percentage of Students Scoring Met/Exemplary on PASS MATH:

Spring 2010 – 65.8%

Spring 2009 – 68.2%

Math Goal

Strategy	Measurable By	Target Date
Utilize Common Assessments.	Students will achieve at least 80% accuracy on common grade level/district unit tests.	April 2011
Utilize Essential Skills to identify essential learning concepts.	Teachers will reflect the use of Learning Focused Strategies in Lesson Plans. Principals will utilize Teacher Observations to record components of Learning Focused in classroom lessons.	May 2011
Provide differentiated practice to support understanding of numbers/operations.	Students will met their target RIT growth goal on the MAP Math test.	March 2011
Implement the use of Compass Learning Odyssey.	Students will achieve at least 80% accuracy on student reports.	January 2011 May 2011
Utilize STAR Math.	At least 75% of students in classrooms will perform at or above grade level.	Sept/Dec 2010 Feb/April 2011

Implementation/Monitoring of Instruction

Four Blocks

Everyday Counts Calendar Math

Learning Focus

Thinking Maps

Write From the Beginning

Vocabulary

Essential Questions

Common Assessments

Technology

Math Super Stars

SEEDS

ERI/RTI

Related Arts

Literacy Closet

Business Partners

Hands-On

Data Stations

Quality Tools

Student Conferencing

Reading Counts

Thank You...

for taking the time to visit Greenbrier!

We look forward to a great school year.

It will be a wonderful year filled with lots of learning and excitement!

