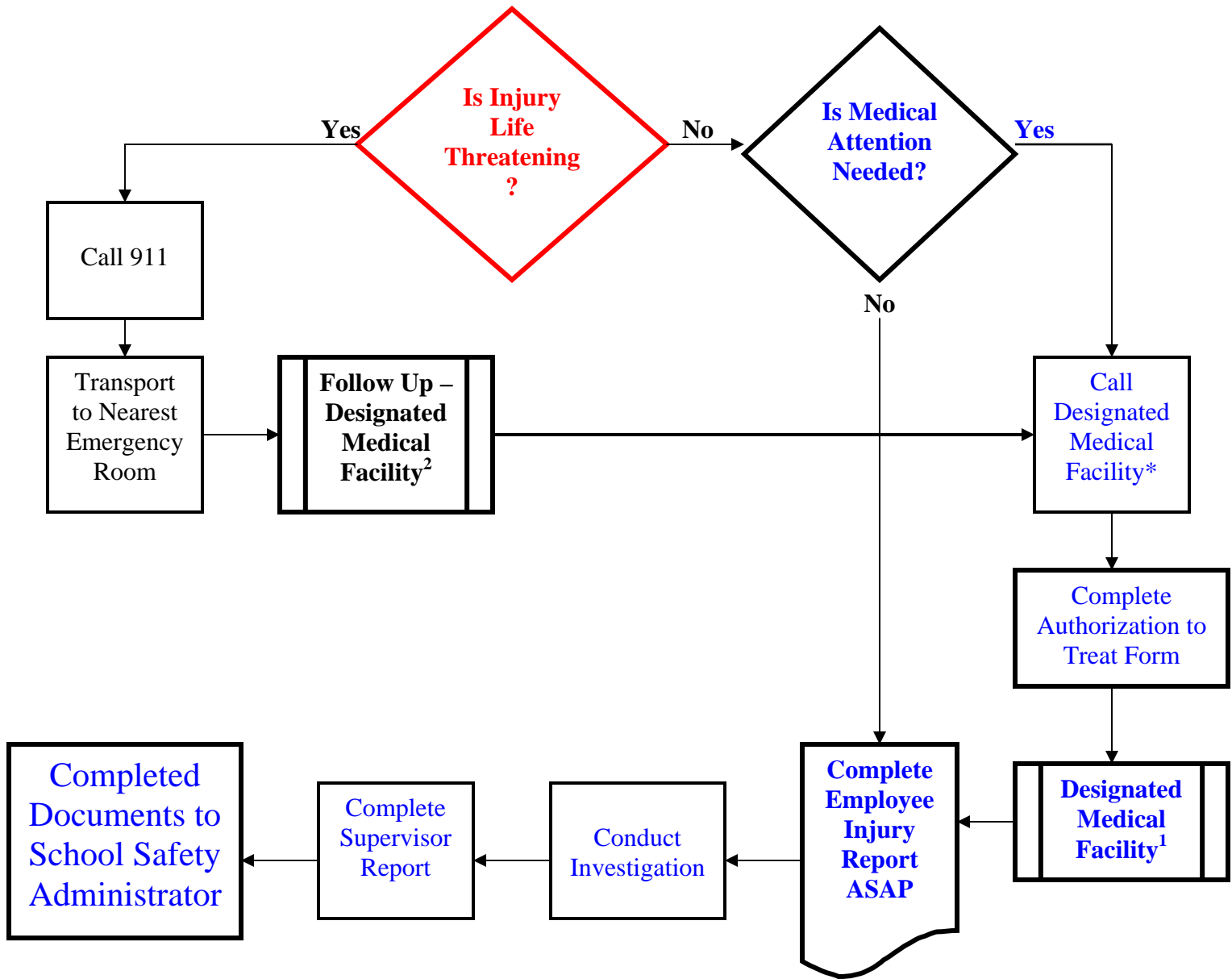


What to do when an employee is injured on the job



¹GCS Designated Medical Facilities

Center for Health and Occupational Services (CHOS)
 1020 Grove Road
 Greenville, SC 29605
 864-455-2300

WorkWell Occupational Health
 135 Commonwealth Blvd. Ste. 120
 Greenville, SC 29615
 864-675-4600

²After ER Visit Follow Up

Greenville Hospital System Emergency Room visit, employee to follow-up at Center for Health and Occupational Services

St. Francis Hospital Emergency Room visit, employee to follow-up at WorkWell Occupational Health